

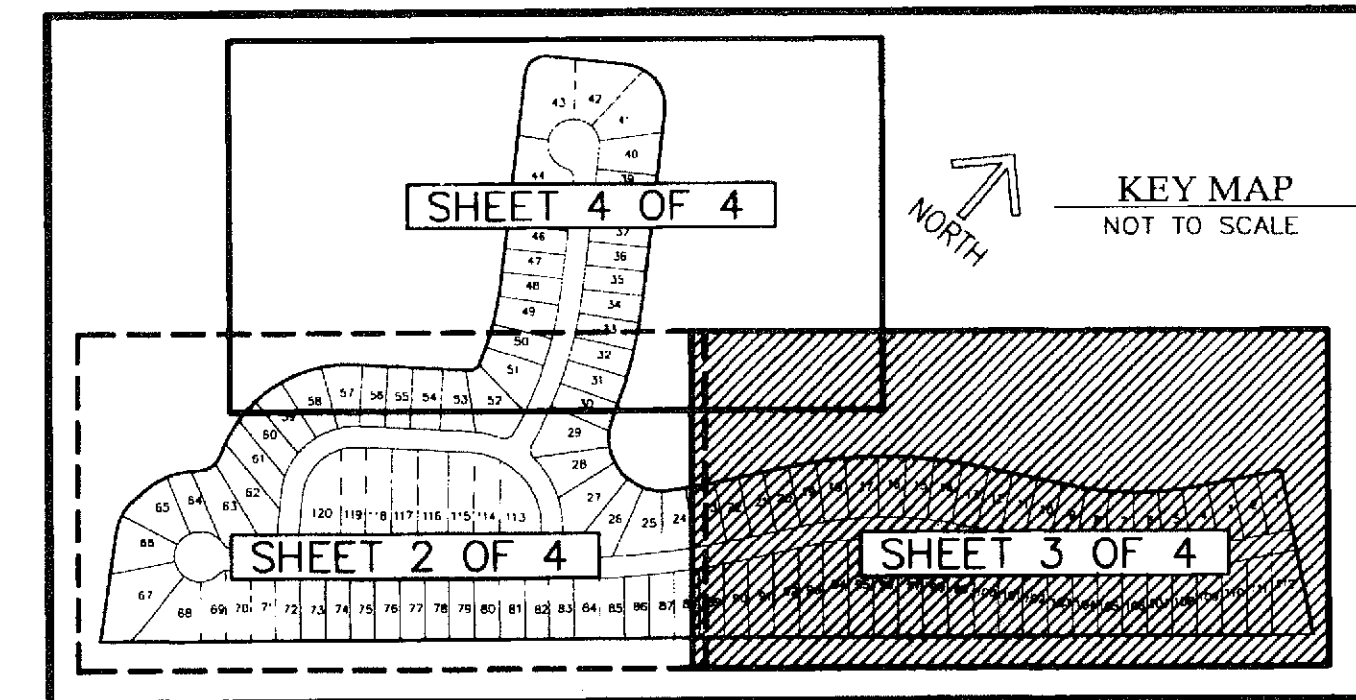
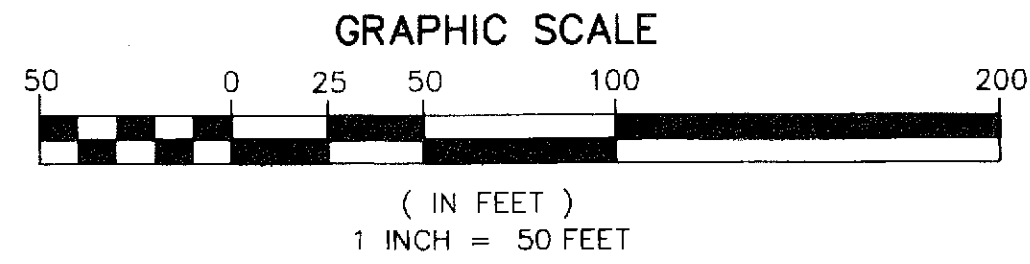
THIS INSTRUMENT PREPARED BY
DAVID P. LINDLEY
OF
CAULFIELD and WHEELER, INC.
SURVEYORS - ENGINEERS - PLANNERS
7301-A WEST PALMETTO PARK ROAD, SUITE 100A
BOCA RATON, FLORIDA 33433 - (561)392-1991
JANUARY - 2010

JUPITER COUNTRY CLUB POD E REPLAT

A PLANNED UNIT DEVELOPMENT, BEING A REPLAT OF POD E, TOGETHER WITH A PORTION OF TRACT GC,
JUPITER COUNTRY CLUB, ACCORDING TO THE PLAT THEREOF, AS RECORDED IN PLAT BOOK 108, PAGES 164 THROUGH 181
OF THE PUBLIC RECORDS OF PALM BEACH COUNTY, FLORIDA, LYING IN SECTION 8, TOWNSHIP 41 SOUTH, RANGE 42 EAST,
TOWN OF JUPITER, PALM BEACH COUNTY, FLORIDA

NOTES COORDINATES, BEARINGS AND DISTANCES

COORDINATES SHOWN ARE GRID
DATUM = NAD 83 1990 ADJUSTMENT
ZONE = FLORIDA EAST
LINEAR UNIT = US SURVEY FEET
COORDINATE SYSTEM 1983 STATE PLANE
TRANSVERSE MERCATOR PROJECTION
ALL DISTANCES ARE GROUND
SCALE FACTOR = 1.0000256
GROUND DISTANCE X SCALE FACTOR = GRID DISTANCE
BEARINGS AS SHOWN HEREON ARE GRID DATUM,
NAD 83 1990 ADJUSTMENT, FLORIDA EAST ZONE.

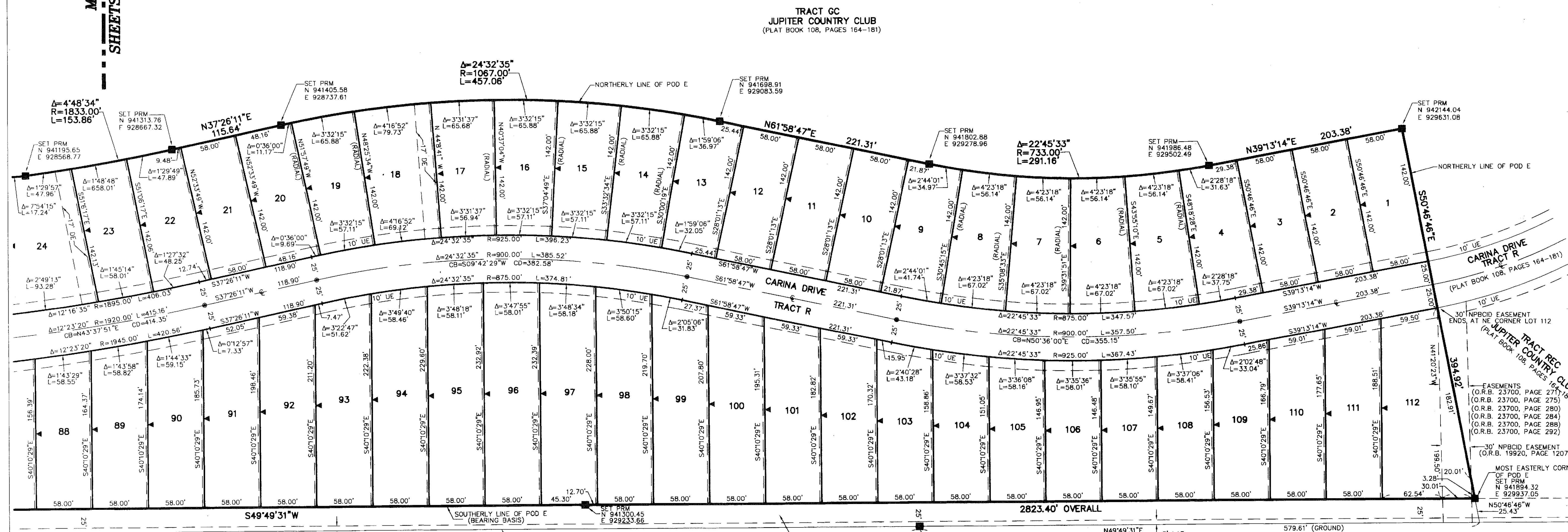


STATE OF FLORIDA
COUNTY OF PALM BEACH
THIS PLAT WAS FILED FOR
RECORD AT _____ M.
THIS _____ DAY OF _____
A.D. 2010 AND DULY RECORDED
IN PLAT BOOK _____ ON
PAGES _____ AND _____
SHARON R. BOCK
CLERK AND COMPTROLLER
BY: _____
DEPUTY CLERK

SHEET 3 OF 4

MATCH LINE
SHEETS 2 AND 4 OF 4

MATCH LINE
SHEET 2 OF 4



TRACT GC
JUPITER COUNTRY CLUB
(PLAT BOOK 108, PAGES 164-181)

TRACT R
JUPITER COUNTRY CLUB
(PLAT BOOK 108, PAGES 164-181)

TRACT L
JUPITER COUNTRY CLUB
(PLAT BOOK 108, PAGES 164-181)

C-18 CANAL
390' RIGHT-OF-WAY
(DEED BOOK 1075, PAGES 364-365)
(DEED BOOK 1061, PAGE 228)
(DEED BOOK 1100, PAGE 437)
(O.R.B. 19796, PAGE 193)

CARINA DRIVE
TRACT R
(PLAT BOOK 108, PAGES 164-181)

JUPITER TRACT REC
TRACT R
(PLAT BOOK 108, PAGES 164-181)

EASEMENTS
(O.R.B. 23700, PAGE 271)
(O.R.B. 23700, PAGE 275)
(O.R.B. 23700, PAGE 280)
(O.R.B. 23700, PAGE 284)
(O.R.B. 23700, PAGE 288)
(O.R.B. 23700, PAGE 292)

30' NPBCID EASEMENT
(O.R.B. 19920, PAGE 1207)

MOST EASTERLY CORNER
OF POD E
SET PRM
N 941894.32
E 929937.05