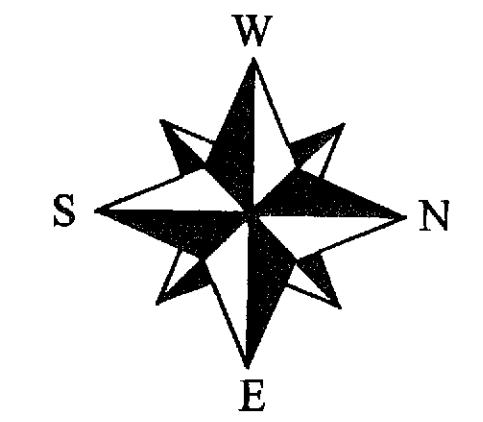
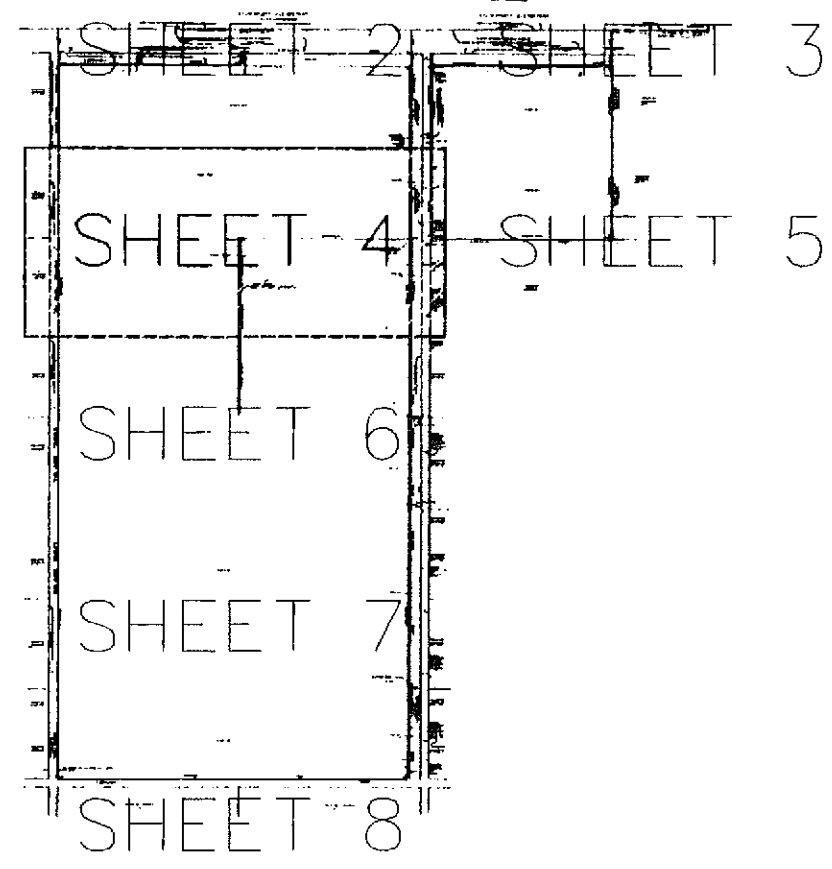


FAITH FARM MINISTRIES BOYNTON BEACH CAMPUS

SHEET 4 OF 8

A PORTION OF TRACTS 45, AND 67 THROUGH 78, BLOCK 51, PALM BEACH FARMS COMPANY, PLAT No. 3, PLAT BOOK 2, PAGE 45, PUBLIC RECORDS OF PALM BEACH COUNTY, FLORIDA.
BEING IN SECTION 19, TOWNSHIP 45 SOUTH, RANGE 42 EAST, PALM BEACH COUNTY FLORIDA
MARCH 2009

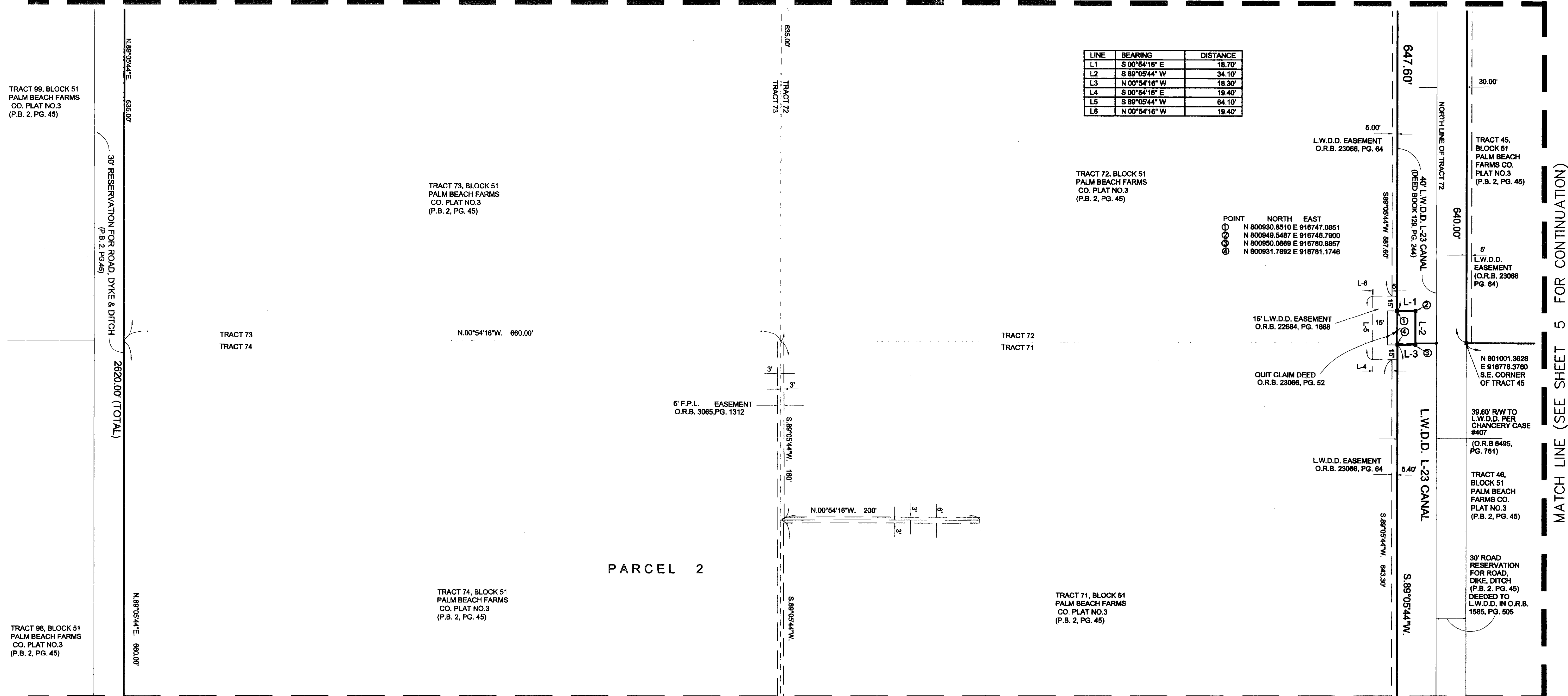


60

STATE OF FLORIDA
COUNTY OF PALM BEACH
THIS PLAT WAS FILED FOR RECORD AT _____ M. THIS _____ DAY OF _____ 2009 AND DULY RECORDED IN PLAT BOOK No. _____ ON PAGES _____ THROUGH _____ SHARON R. BOCK CLERK & COMPTROLLER - PALM BEACH COUNTY BY: _____ D.C.

SITE MAP (N.T.S.)

MATCH LINE (SEE SHEET 2 FOR CONTINUATION)



MATCH LINE (SEE SHEET 6 FOR CONTINUATION)

SCALE: 1" = 50'	MILLER LAND SURVEYING	REFERENCES BB 14-67
DR: EVANS	1121 LAKE AVE. LAKE WORTH, FLORIDA 33460	JOB NO. Y070423-PLAT
FIELD: M.M.	PHONE: (561) 588-2669 FAX: (561) 582-0151 www.MillerSurveying.com	L-1705-A
DATE: MARCH 2009		