

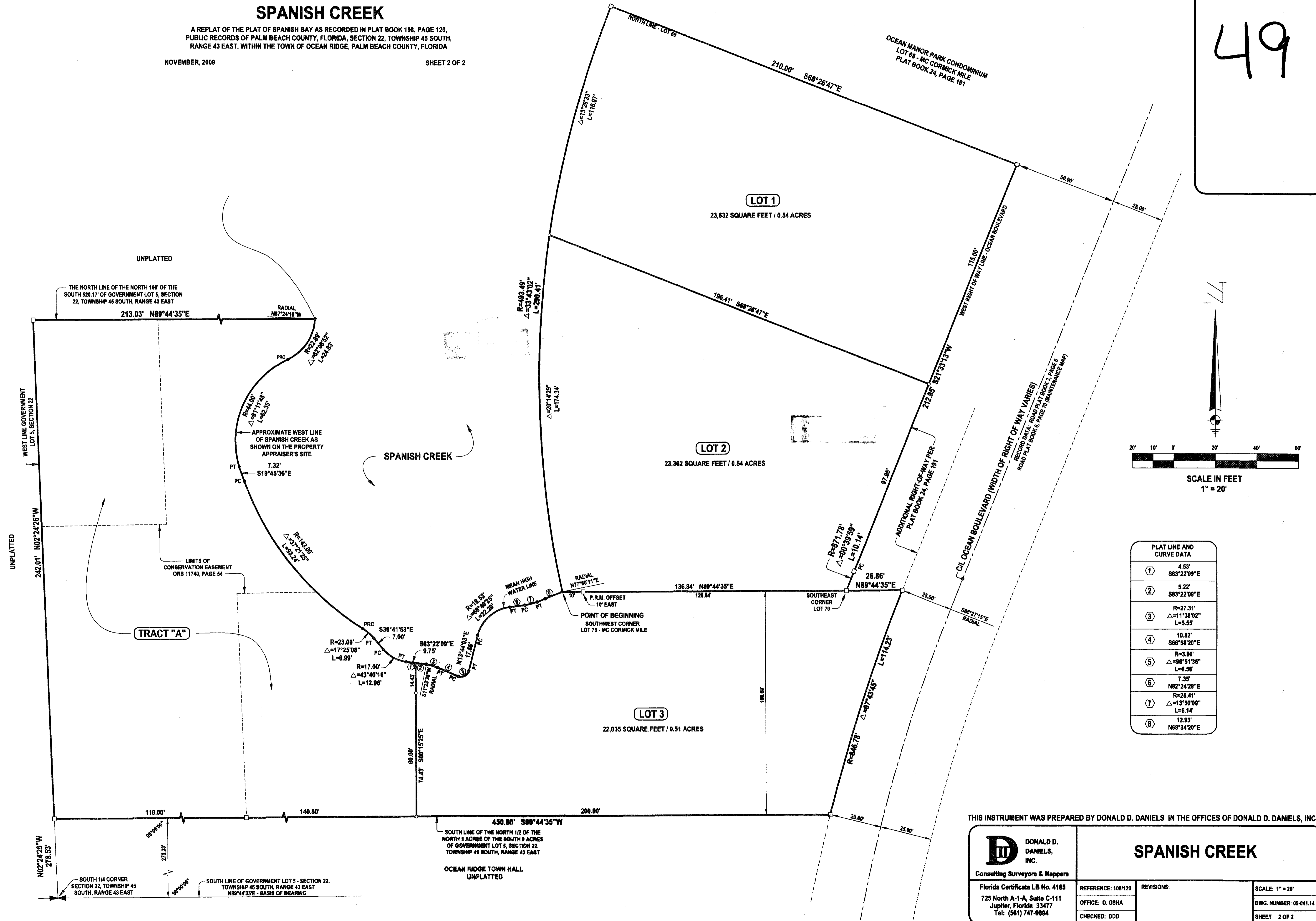
# SPANISH CREEK

A REPLAT OF THE PLAT OF SPANISH BAY AS RECORDED IN PLAT BOOK 108, PAGE 120,  
PUBLIC RECORDS OF PALM BEACH COUNTY, FLORIDA, SECTION 22, TOWNSHIP 45 SOUTH,  
RANGE 43 EAST, WITHIN THE TOWN OF OCEAN RIDGE, PALM BEACH COUNTY, FLORIDA

NOVEMBER, 2009


SHEET 2 OF 2

49



PLAT LINE AND CURVE DATA	
①	4.53' S83°22'09"E
②	5.22' S83°22'09"E
③	R=27.31' Δ=11°38'02" L=5.55'
④	10.82' S66°58'20"E
⑤	R=3.80' Δ=98°51'36" L=6.56'
⑥	7.35' N82°24'29"E
⑦	R=25.41' Δ=13°50'08" L=6.14'
⑧	12.93' N68°34'20"E

THIS INSTRUMENT WAS PREPARED BY DONALD D. DANIELS IN THE OFFICES OF DONALD D. DANIELS, INC.

 <b>DONALD D. DANIELS, INC.</b> Consulting Surveyors & Mappers	<b>SPANISH CREEK</b>	
	Florida Certificate LB No. 4185 725 North A-1-A, Suite C-111 Jupiter, Florida 33477 Tel: (561) 747-9894	REFERENCE: 108/120 OFFICE: D. OSHA CHECKED: DDD