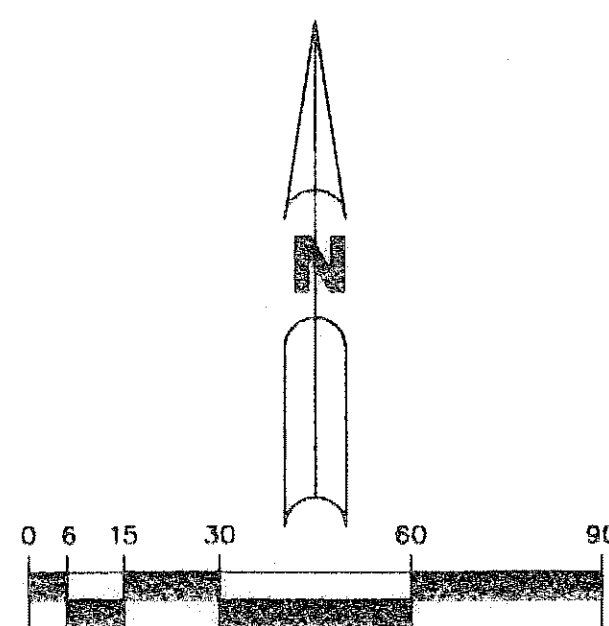


LEELAN WEST INDUSTRIAL PARK PLAT 1A

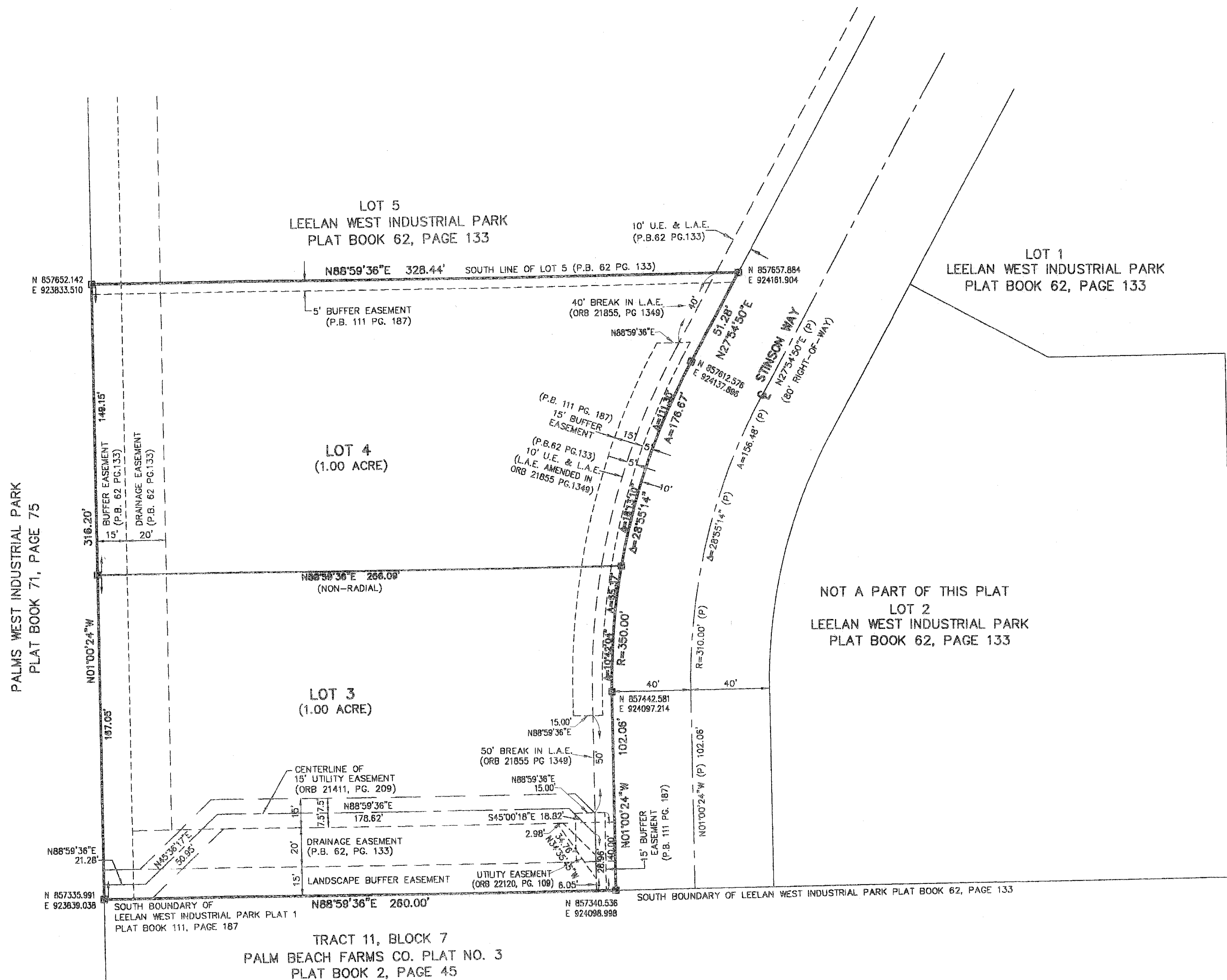
A PARCEL OF LAND LYING IN SECTION 32, TOWNSHIP 43 SOUTH, RANGE 42 EAST, PALM BEACH COUNTY, FLORIDA, BEING A REPLAT OF ALL OF LEELAN WEST INDUSTRIAL PARK PLAT 1, RECORDED IN PLAT BOOK 111, PAGE 187 OF THE PUBLIC RECORDS OF PALM BEACH COUNTY, FLORIDA.

JUNE 2009

SHEET 2 OF 2



SCALE: 1" = 30'



THIS INSTRUMENT WAS PREPARED BY JOHN E. PHILLIPS III, P.S.M. 4826

BROWN & PHILLIPS, INC.
 CERTIFICATE OF AUTHORIZATION # LB 6473
 901 NORTHPPOINT PKWY., SUITE 119
 WEST PALM BEACH, FLORIDA 33407
 561-615-3988, 615-3986 FAX