

PLAT OF GOVERNMENT BLOCK

A REPLAT OF A PORTION OF BLOCKS 36 AND 41, MAP OF THE TOWN OF WEST PALM BEACH, ACCORDING TO THE PLAT THEREOF RECORDED IN PLAT BOOK 1, PAGE 2, OF THE PUBLIC RECORDS OF PALM BEACH COUNTY, FLORIDA LYING IN SECTION 22, TOWNSHIP 43 SOUTH, RANGE 43 EAST CITY OF WEST PALM BEACH, PALM BEACH COUNTY, FLORIDA

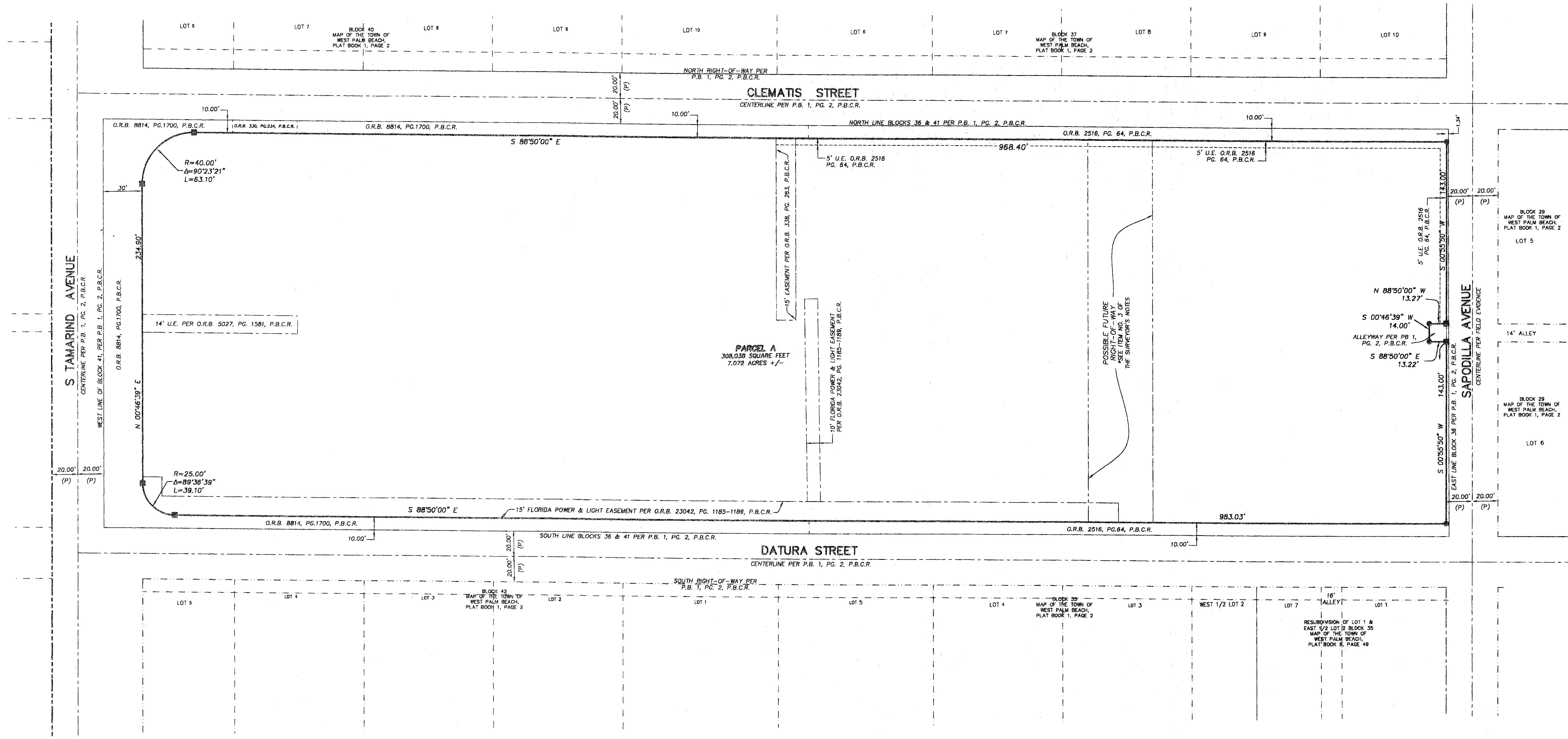
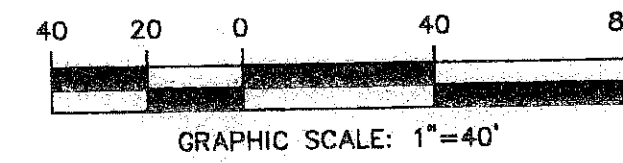
LEGEND

- A DELTA
- L ARC LENGTH
- O.R.B. OFFICIAL RECORD BOOK
- (P) PLAT
- P.B. PLAT BOOK
- P.B.C.R. PALM BEACH COUNTY RECORDS
- P.C. PAGE
- R RADIUS
- R.B. ROAD PLAT BOOK
- SET PERMANENT REFERENCE MONUMENT LB 271 NAIL AND DISC IN CONCRETE
- SET PERMANENT REFERENCE MONUMENT LB 271 IN 4x4 CONCRETE MONUMENT
- SET 5/8" IRON ROD & CAP LB 271
- SET NAIL & DISC LB 271
- U.E. UTILITY EASEMENT

143

STATE OF FLORIDA
 COUNTY OF PALM BEACH
 THIS PLAT WAS FILED FOR RECORD AT _____
 THIS _____ DAY OF _____, 20____
 AND DULY RECORDED IN PLAT BOOK NO. _____
 ON PAGES _____
 SHARON R. BOCK,
 CLERK & COMPTROLLER
 BY _____ DEPUTY CLERK

SHEET 2 OF 2 SHEETS



THIS INSTRUMENT WAS PREPARED BY:
 MARK RAY MINTER, P.S.M. #5785 OF
CRAVEN THOMPSON & ASSOCIATES, INC.
 ENGINEERS • PLANNERS • SURVEYORS
 3563 N.W. 53RD STREET FORT LAUDERDALE, FLORIDA 33309
 TEL.: (954) 739-6400 FAX: (954) 739-6402
 AUGUST 2007 06-0103