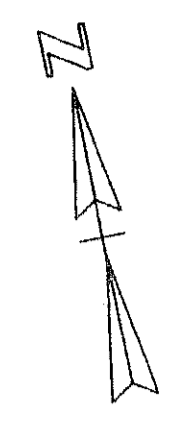
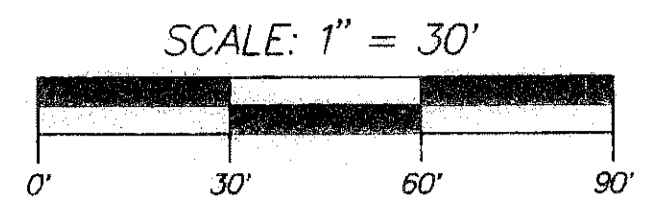


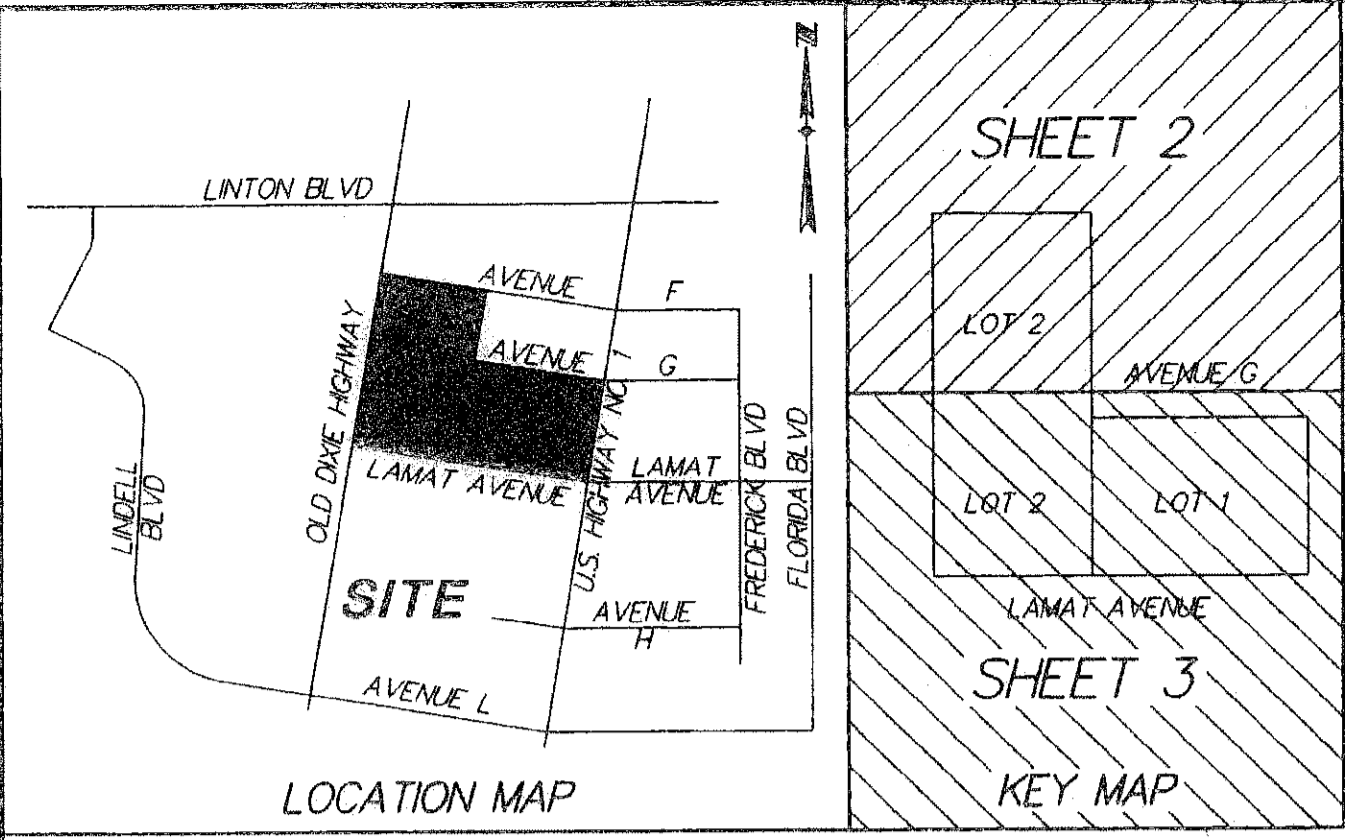
COUNTY OF PALM BEACH
STATE OF FLORIDA
THIS PLAT WAS FILED FOR RECORD AT _____
THIS _____ DAY OF _____
20____ AND DULY RECORDED IN PLAT BOOK NO. _____
ON PAGE _____
SHARON R. BOCK, CLERK OF CIRCUIT COURT
AND COMPTROLLER.
BY _____ D.C.



MORSE-LAMAT PLAT

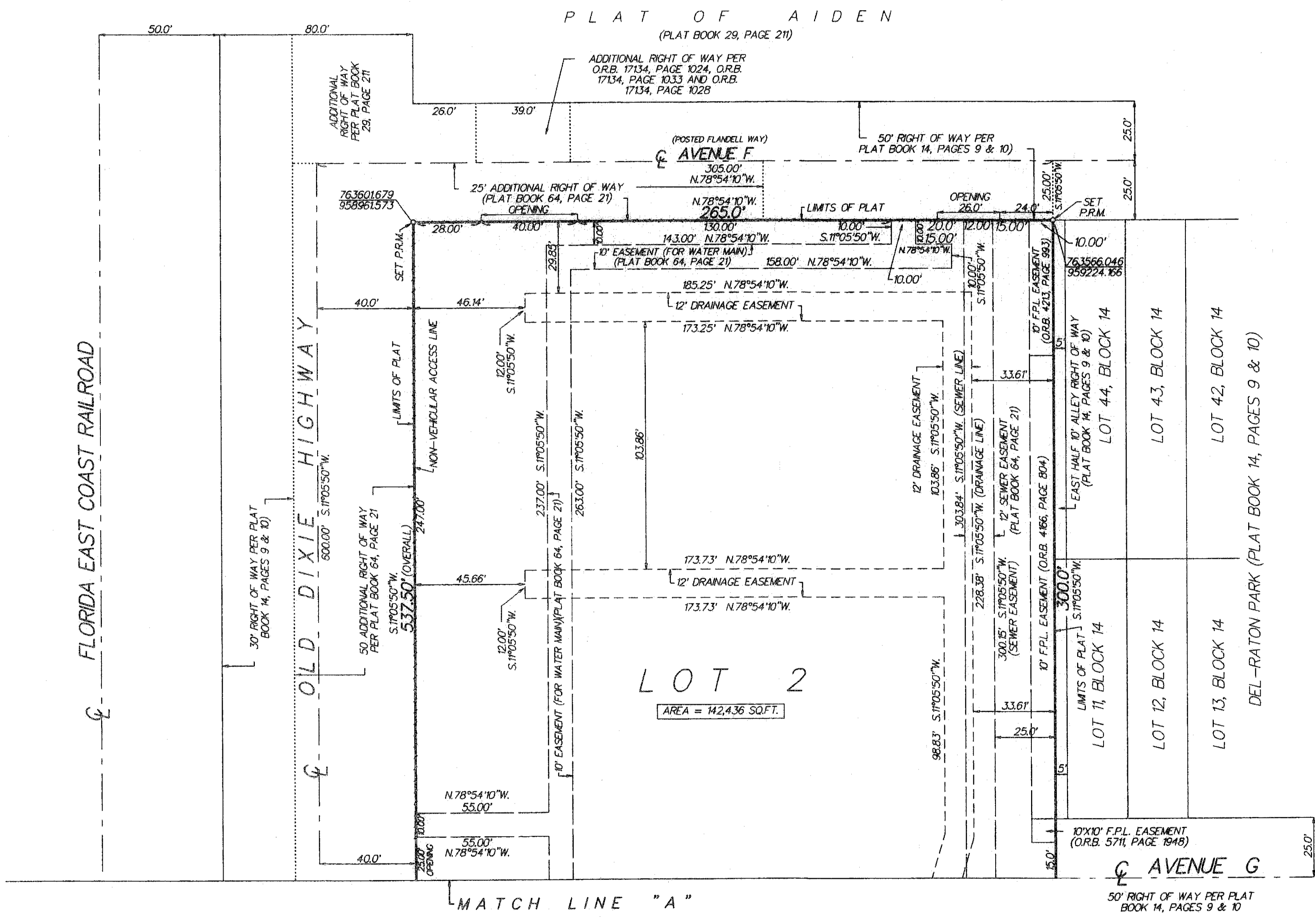
BEING A REPLAT OF LOT 1 MORSE DELRAY TOYOTA RE-PLAT
(PLAT BOOK 110, PAGES 113-117), BEING IN SECTION 29,
TOWNSHIP 46 SOUTH, RANGE 43 EAST, CITY OF DELRAY BEACH,
PALM BEACH COUNTY, FLORIDA

OCTOBER 2008
SHEET 2 OF 3



- LEGEND:
- ☉ = CENTERLINE
 - O.R.B. = OFFICIAL RECORD BOOK
 - F.P.L.CO. = FLORIDA POWER & LIGHT COMPANY
 - W.M.E. = WATER MAIN EASEMENT
 - P.R.M. = PERMANENT REFERENCE MONUMENT
(4"X4" CONCRETE MONUMENT STAMPED
PRM LB3533)

NOTES:
COORDINATES, BEARINGS AND DISTANCES:
COORDINATES SHOWN ARE GRID DATUM = NAD83, 1990 ADJUSTMENT ZONE = FLORIDA EAST LINEAR UNIT U.S. SURVEY FEET COORDINATE SYSTEM 1983 STATE PLANE TRANSVERSE MERCATOR PROJECTION.
ALL DISTANCES ARE GROUND: SCALE FACTOR 1.0000461
GROUND DISTANCE X SCALE FACTOR = GRID DISTANCE
N.82°16'21"W. (GRID BEARING)
N.78°54'10"W. (PLAT BEARING)
3°22'11" = BEARING ROTATION (PLAT TO GRID)
THE STATE PLANE COORDINATES SHOWN HEREON CONFORM TO THE FLORIDA STATE PLANE COORDINATE SYSTEM, TRANSVERSE MERCATOR, EAST ZONE, ON THE NORTH AMERICAN DATUM OF 1983, 1990 ADJUSTMENT AS ESTABLISHED, ADOPTED AND PUBLISHED BY THE PALM BEACH COUNTY SURVEY SECTION.
COORDINATES SHOWN ON THE CONTROL P.R.M.'S MEET OR EXCEED THE LOCAL ACCURACY REQUIREMENTS OF A 2 CENTIMETER GEODETIC CONTROL SURVEY.
THE STATE PLANE COORDINATES SHOWN HEREON, FOR THE PERMANENT REFERENCE MONUMENTS, ARE BASED ON PALM BEACH COUNTY SURVEY SECTION CONTROL POINTS AND ARE DERIVED FROM FIELD MEASUREMENTS WHICH EXCEED THE REQUIREMENTS OF THE MINIMUM TECHNICAL STANDARDS FOR COMMERCIAL HIGH RISK SURVEYS AS DEFINED IN CHAPTER 61G17-6 OF THE FLORIDA ADMINISTRATIVE CODE PURSUANT TO SECTION 427.027 FLORIDA STATUTES.
THE DRAINAGE EASEMENTS AS SHOWN HEREON ARE INTENDED TO REPLACE THE DRAINAGE EASEMENTS AS SHOWN ON PLAT BOOK 110, PAGES 113-117 WHERE APPLICABLE.
ALL GENERAL UTILITY EASEMENTS SHOWN HEREON ARE FOR THE USE BY ANY PUBLIC OR PRIVATE UTILITY, SUCH AS BUT NOT LIMITED TO, STORM DRAINAGE, SANITARY SEWER, ELECTRIC POWER, WATER SERVICE, GAS SERVICE, TELEPHONE LINES AND CABLE TELEVISION SERVICES; PROVIDED HOWEVER, NO SUCH CONSTRUCTION, INSTALLATION, MAINTENANCE, AND OPERATION OF CABLE TELEVISION SERVICES SHALL INTERFERE WITH THE FACILITY AND SERVICES OF AN ELECTRIC, TELEPHONE, GAS OR OTHER PUBLIC FACILITY.



MATCH LINE "A"