

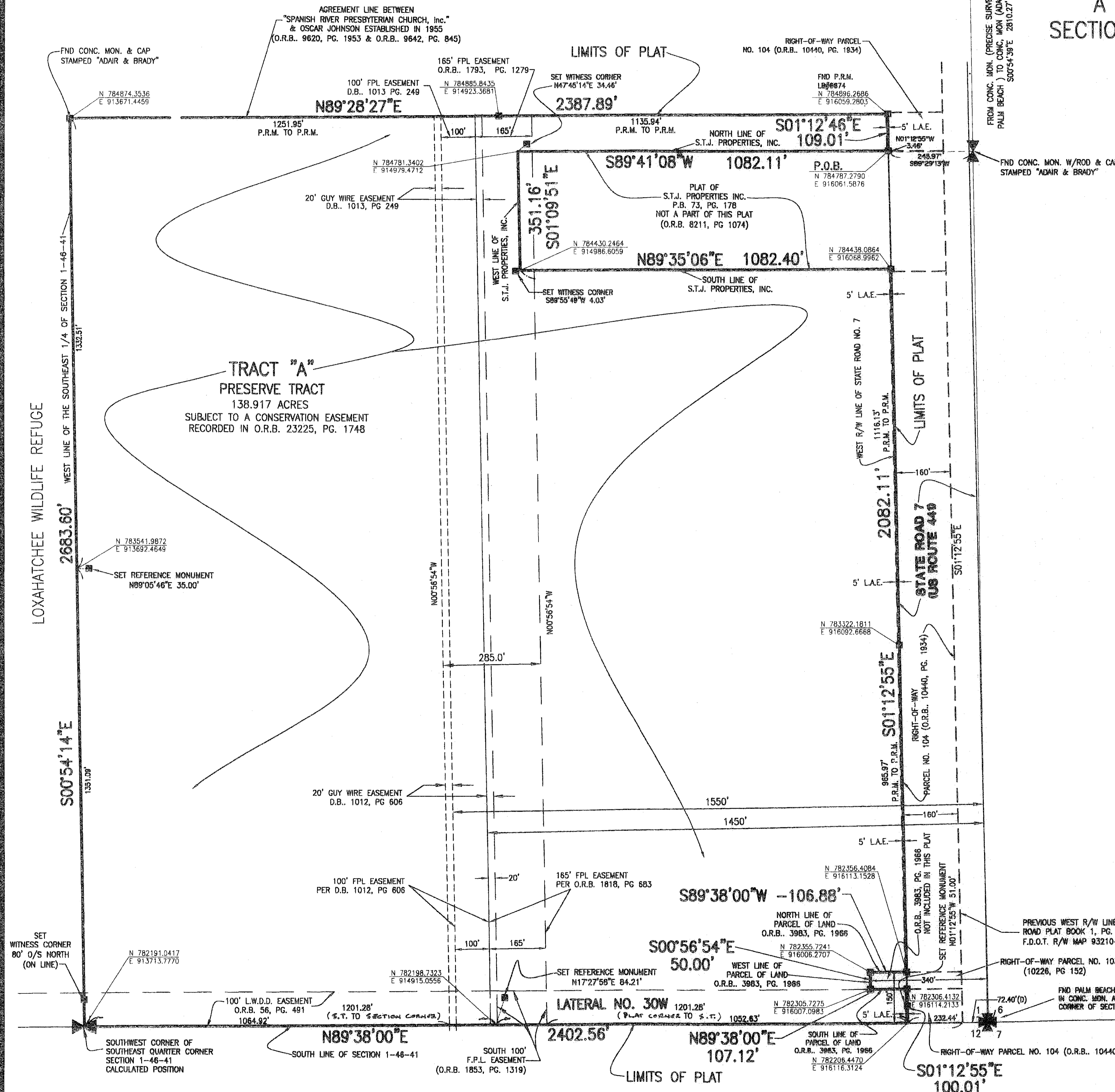
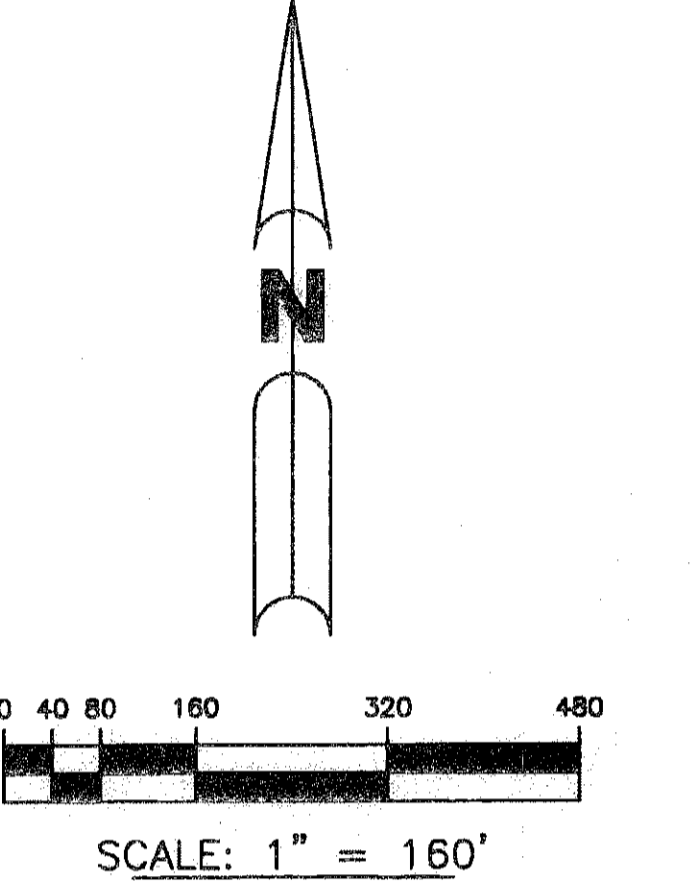
# DUBOIS AGR - PRESERVE PLAT FOUR

135

A PARCEL OF LAND IN THE EAST HALF OF SECTION 1, TOWNSHIP 46 SOUTH, RANGE 41 EAST, PALM BEACH COUNTY, FLORIDA.

SHEET 2 OF 2 JANUARY, 2009

THIS INSTRUMENT PREPARED BY  
PERRY C. WHITE, P.S.M. 4213, STATE OF FLORIDA  
ARCADIS U.S., INC.  
2081 VISTA PARKWAY  
WEST PALM BEACH, FLORIDA 33411  
EB 7917 / LB 7062



### LEGEND:

- - SET PERMANENT REFERENCE MONUMENT, L.B. #7062
- - FOUND PERMANENT REFERENCE MONUMENT, L.B. #6674
- A B - ADAIR AND BRADY
- CALC. - DIMENSION PER CALCULATION
- C - CENTERLINE
- C.M. - CONCRETE MONUMENT
- CONC. - CONCRETE
- (D.) - DEED
- D.B. - DEED BOOK
- D.E. - DRAINAGE EASEMENT
- F.P.L. - FLORIDA POWER AND LIGHT
- FND. - FOUND
- GND. - GROUND
- L.A.E. - LIMITED ACCESS EASEMENT
- L.B. - LICENSED BUSINESS
- L.W.D.D. - LAKE WORTH DRAINAGE DISTRICT
- (M.) - MEASURED
- MON. - MONUMENT
- N.T.S. - NOT TO SCALE
- O.R.B. - OFFICIAL RECORD BOOK
- (P.) - PLAT
- P.B. - PLAT BOOK
- P.B. CO. - DIMENSIONS PUBLISHED BY PALM BEACH COUNTY
- PGS. - PAGES
- P.O.B. - POINT OF BEGINNING
- P.O.C. - POINT OF COMMENCEMENT
- P.S.M. - PROFESSIONAL SURVEYOR AND MAPPER
- R.L.S. - REGISTERED LAND SURVEY
- SEC. - SECTION
- S.T. - SURVEY TIE
- R/W - RIGHT-OF-WAY
- TYP. - TYPICAL
- U.E. - UTILITY EASEMENT
- 1-46-41 - SECTION 14, TOWNSHIP 46 SOUTH, RANGE 41 EAST
- N 100000.0000 - DENOTES STATE PLANE COORDINATES
- E 100000.0000

### NOTE:

COORDINATES SHOWN ON THE GEODETIC CONTROL MEET OR EXCEED THE LOCAL ACCURACY REQUIREMENTS OF A 2 CENTIMETER GEODETIC CONTROL SURVEY. COORDINATES SHOWN ARE GRID COORDINATES DATUM = NAD 83 (1990 ADJUSTMENT) AS READJUSTED BY PALM BEACH COUNTY IN 1998. ZONE = FLORIDA EAST ZONE. LINEAR UNIT = U.S. SURVEY FEET. COORDINATE SYSTEM = 1983 STATE PLANE TRANSVERSE MERCATOR PROJECTION. ALL DISTANCES ARE GROUND. SCALE FACTOR = 1.0000179. PLAT BEARING = GRID BEARING.

### LOCATION MAP

NOT TO SCALE

