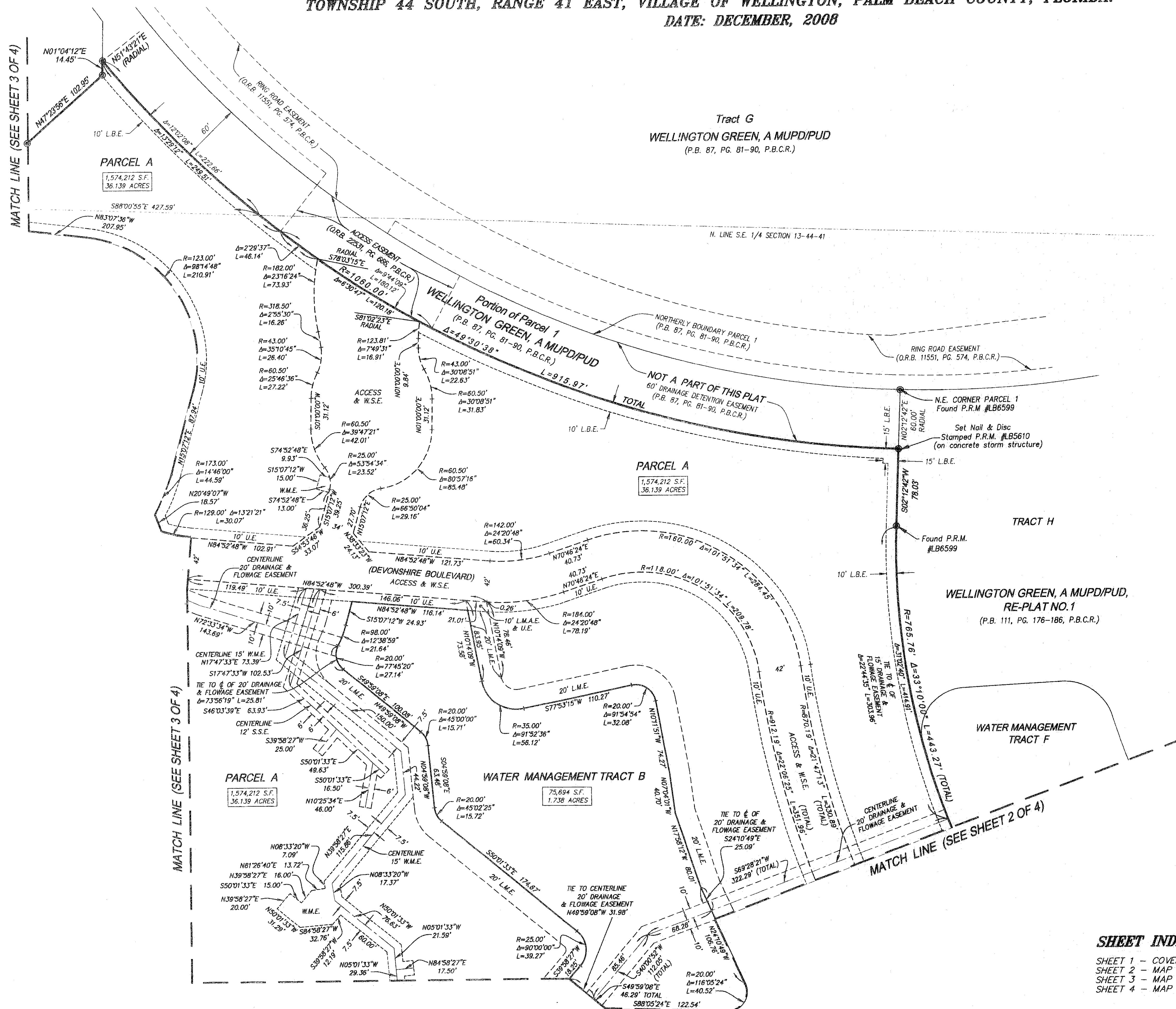
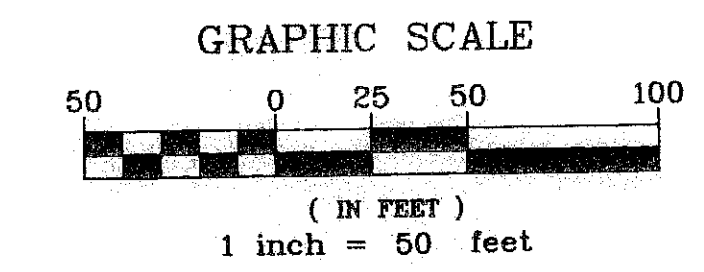
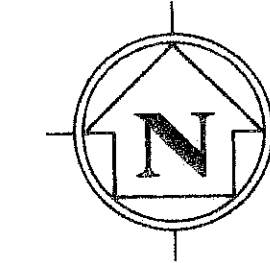


WELLINGTON GREEN, A MUPD/PUD, A REPLAT OF A PORTION OF PARCEL 1

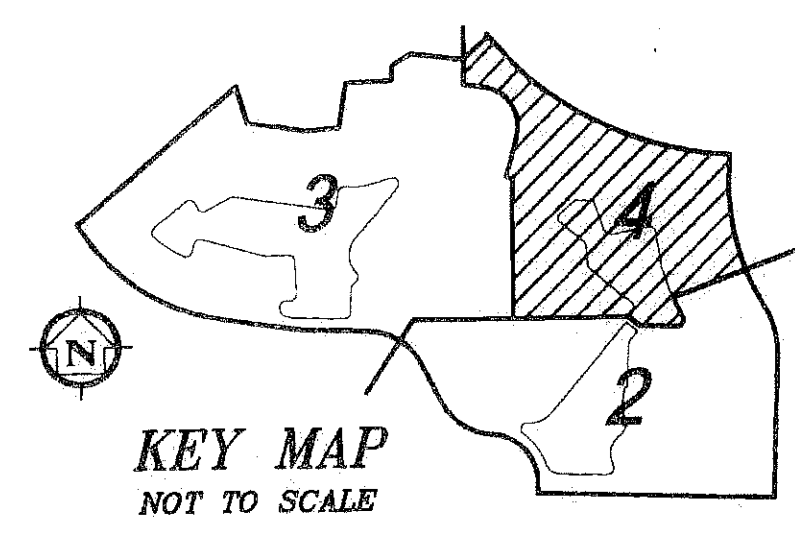
129

BEING A REPLAT OF A PORTION OF PARCEL 1, WELLINGTON GREEN, A MUPD/PUD (PLAT BOOK 87, PAGES 81 THROUGH 90, INCLUSIVE, PUBLIC RECORDS OF PALM BEACH COUNTY, FLORIDA) LYING IN SECTION 13, TOWNSHIP 44 SOUTH, RANGE 41 EAST, VILLAGE OF WELLINGTON, PALM BEACH COUNTY, FLORIDA.
DATE: DECEMBER, 2008



LEGEND

- ⊙ = CENTERLINE
- Δ = DELTA (CENTRAL ANGLE)
- FPL = FLORIDA POWER AND LIGHT
- LB = LICENSED SURVEYING BUSINESS
- L = LENGTH OF ARC
- L.B.E. = LANDSCAPE BUFFER EASEMENT
- L.M.E. = LAKE MAINTENANCE EASEMENT
- L.M.A.E. = LAKE MAINTENANCE ACCESS EASEMENT
- O.R.B. = OFFICIAL RECORDS BOOK
- P.B. = PLAT BOOK
- P.B.C.R. = PALM BEACH COUNTY RECORDS
- PG. = PAGE
- ⊙ = SET PERMANENT REFERENCE MONUMENT (P.R.M.)
NAIL & 1-1/2" BRASS WASHER STAMPED: PRM LB 5610
SET IN TOP OF 4" x 4" x 24" CONCRETE POST
- P.R.M. = PERMANENT REFERENCE MONUMENT
- R = RADIUS
- S.S.E. = SANITARY SEWER EASEMENT
- S.F. = SQUARE FEET
- U.E. = UTILITY EASEMENT
- W.M.E. = WATERMAIN EASEMENT
- W.S.E. = WATER AND SEWER EASEMENT



This Instrument Prepared By:
James A. Hamilton, III
IBI
2200 PARK CENTRAL BLVD. NORTH
SUITE 100
POMPANO BEACH, FLORIDA 33064
(954) 974-2200
IBI GROUP, INC.
ENGINEERS SURVEYORS PLANNERS
AUTHORIZATION #LB5610

SHEET INDEX:
SHEET 1 - COVER SHEET
SHEET 2 - MAP SHEET AND SURVEY NOTES
SHEET 3 - MAP SHEET
SHEET 4 - MAP SHEET