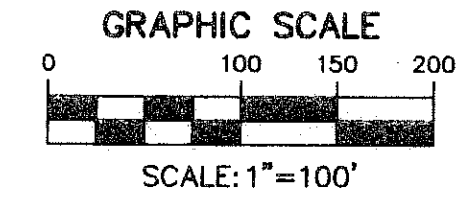
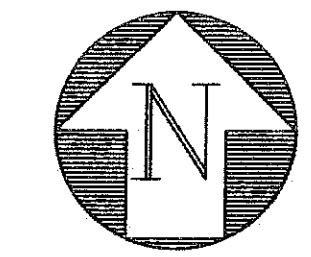


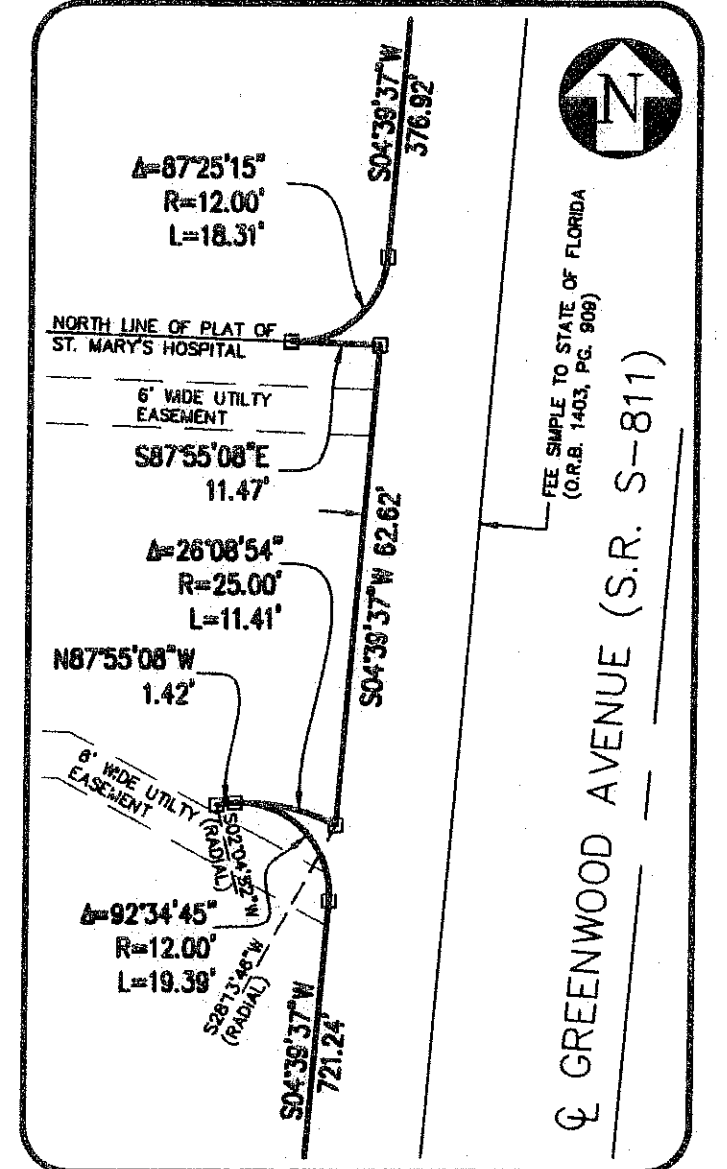
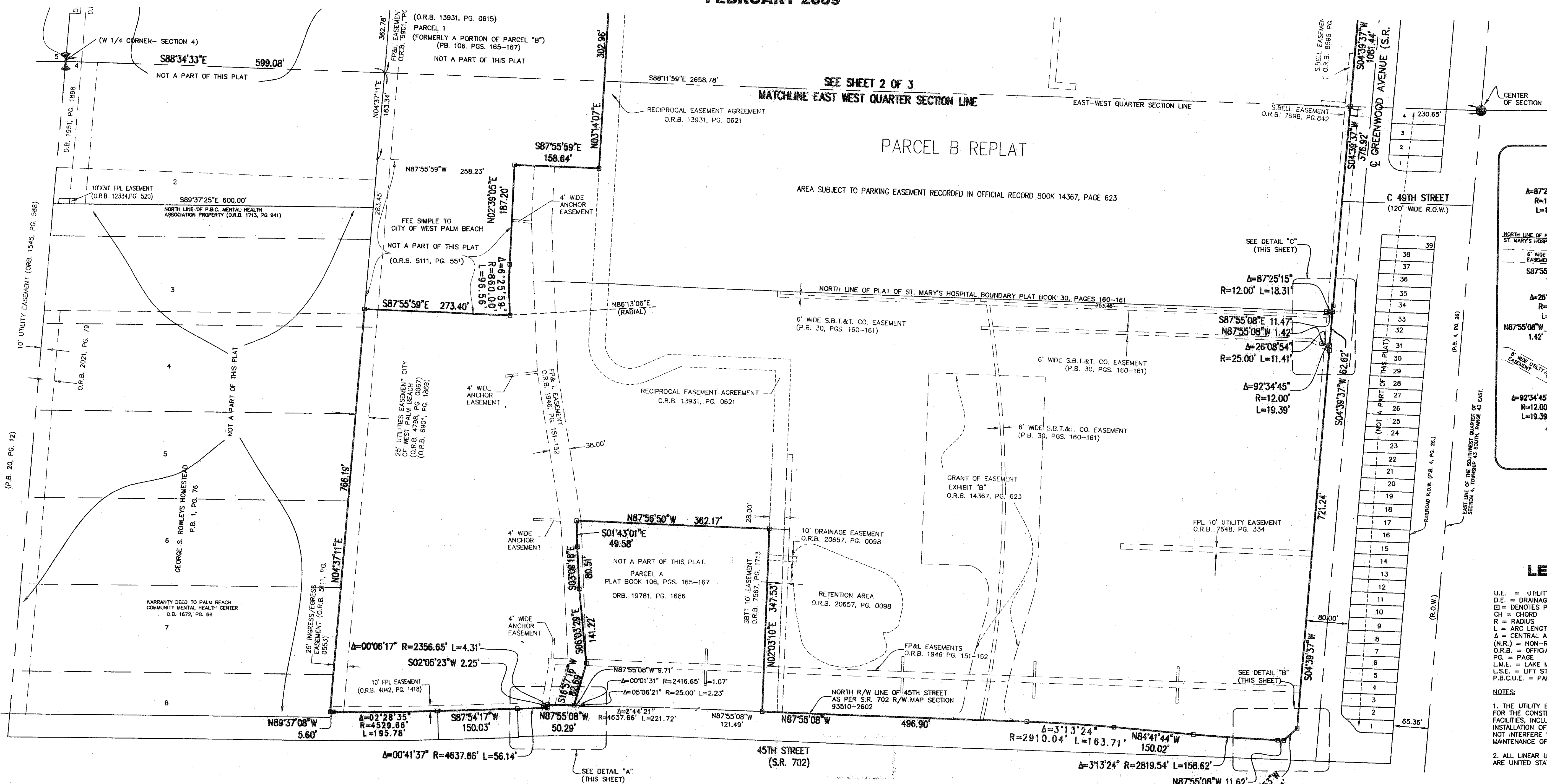
TENET ST. MARY'S PARCEL B REPLAT

Being a replat of PARCEL B of the plat of Tenet St. Mary's as recorded in Plat Book 106, Pages 165 through 167, of the Public Records of Palm Beach County, Florida, lying in Section 4, Township 43 South, Range 43 East, City of West Palm Beach, Palm Beach County, Florida.

SHEET 3 OF 3
FEBRUARY 2009



94

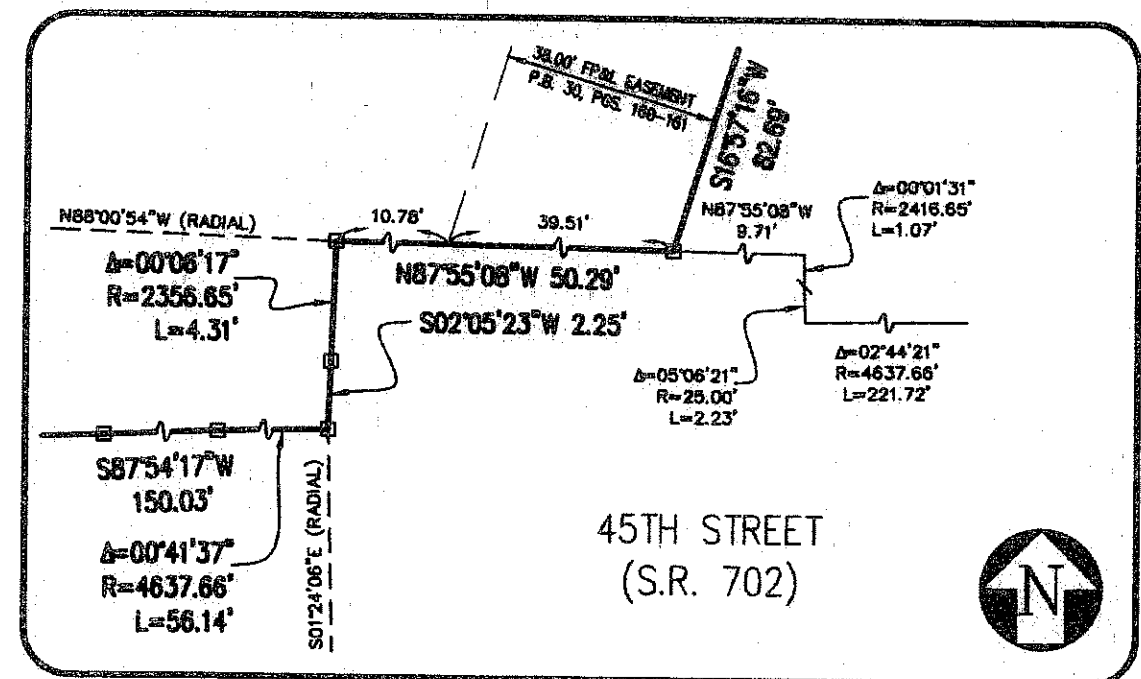


DETAIL "C"
N.T.S.

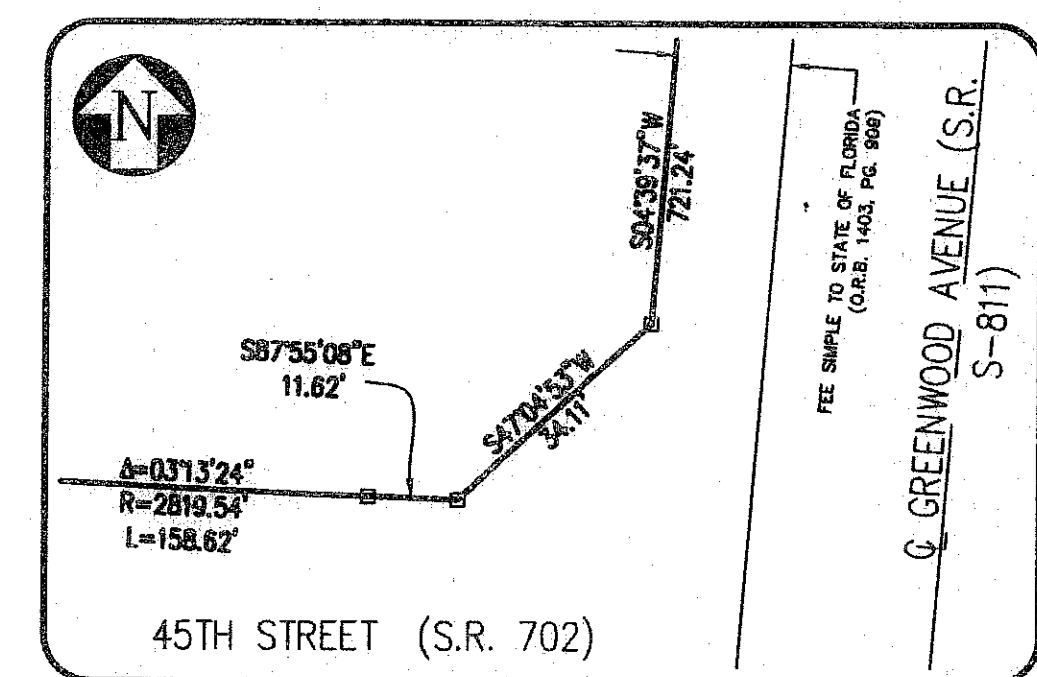
LEGEND

- U.E. = UTILITY EASEMENT
- D.E. = DRAINAGE EASEMENT
- DM = DENOTES PERMANENT REFERENCE MONUMENT
- CH = CHORD
- R = RADIUS
- L = ARC LENGTH
- Δ = CENTRAL ANGLE
- (N.R.) = NON-RADIAL
- O.R.B. = OFFICIAL RECORD BOOK
- PG. = PAGE
- L.M.E. = LAKE MAINTENANCE EASEMENT
- L.S.E. = LIFT STATION EASEMENT
- P.B.C.U.E. = PALM BEACH COUNTY UTILITY EASEMENT

NOTES:
1. THE UTILITY EASEMENTS AS SHOWN HEREON ARE FOR THE CONSTRUCTION AND MAINTENANCE OF UTILITY FACILITIES, INCLUDING CABLE TELEVISION SYSTEMS. THE INSTALLATION OF CABLE TELEVISION SYSTEMS SHALL NOT INTERFERE WITH THE CONSTRUCTION AND MAINTENANCE OF OTHER UTILITIES.
2. ALL LINEAR UNITS OF MEASUREMENT SHOWN HEREON ARE UNITED STATES SURVEY FOOT.



DETAIL "A"
N.T.S.



DETAIL "B"
N.T.S.

THIS INSTRUMENT PREPARED BY GARY A. RAGER, P.S.M. #LS4828 STATE OF FLORIDA. ENGENUITY GROUP INC., ENGINEERS, SURVEYORS & GIS MAPPERS 1201 BELVEDERE ROAD, WEST PALM BEACH, FLORIDA 33405. CERTIFICATE OF AUTHORIZATION NO. LB0006603

TENET ST. MARY'S PARCEL B REPLAT

A Higher Standard of Excellence

ENGINEERS • SURVEYORS • GIS MAPPERS

1201 BELVEDERE ROAD, WEST PALM BEACH, FLORIDA 33405
PH (561) 855-1151 • FAX (561) 832-9380
WWW.ENGENUITYGROUP.COM • LE NO. 6603

| | |
|----------|------------------|
| DATE | FEBRUARY 2009 |
| SCALE | 1" = 100' |
| CAD FILE | PHASETWOPLAT.DWG |
| PROJECT | 98523.07 |
| DRAWN | STAFF |
| CHECKED | G. RAGER |

SHEET
3/3

JOB NO.
98523.11

Y:\Land Projects\98523.07\eng\Proctec\PLA.dwg 1/28/2009 3:00:29 PM EST