

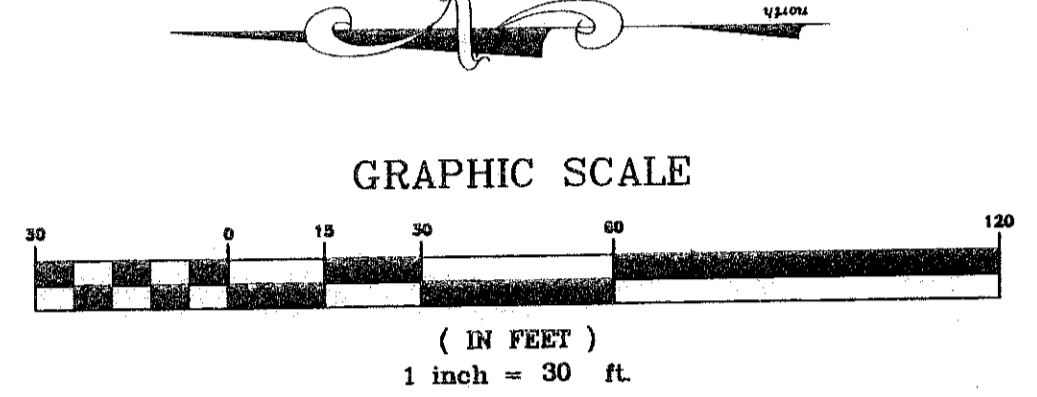
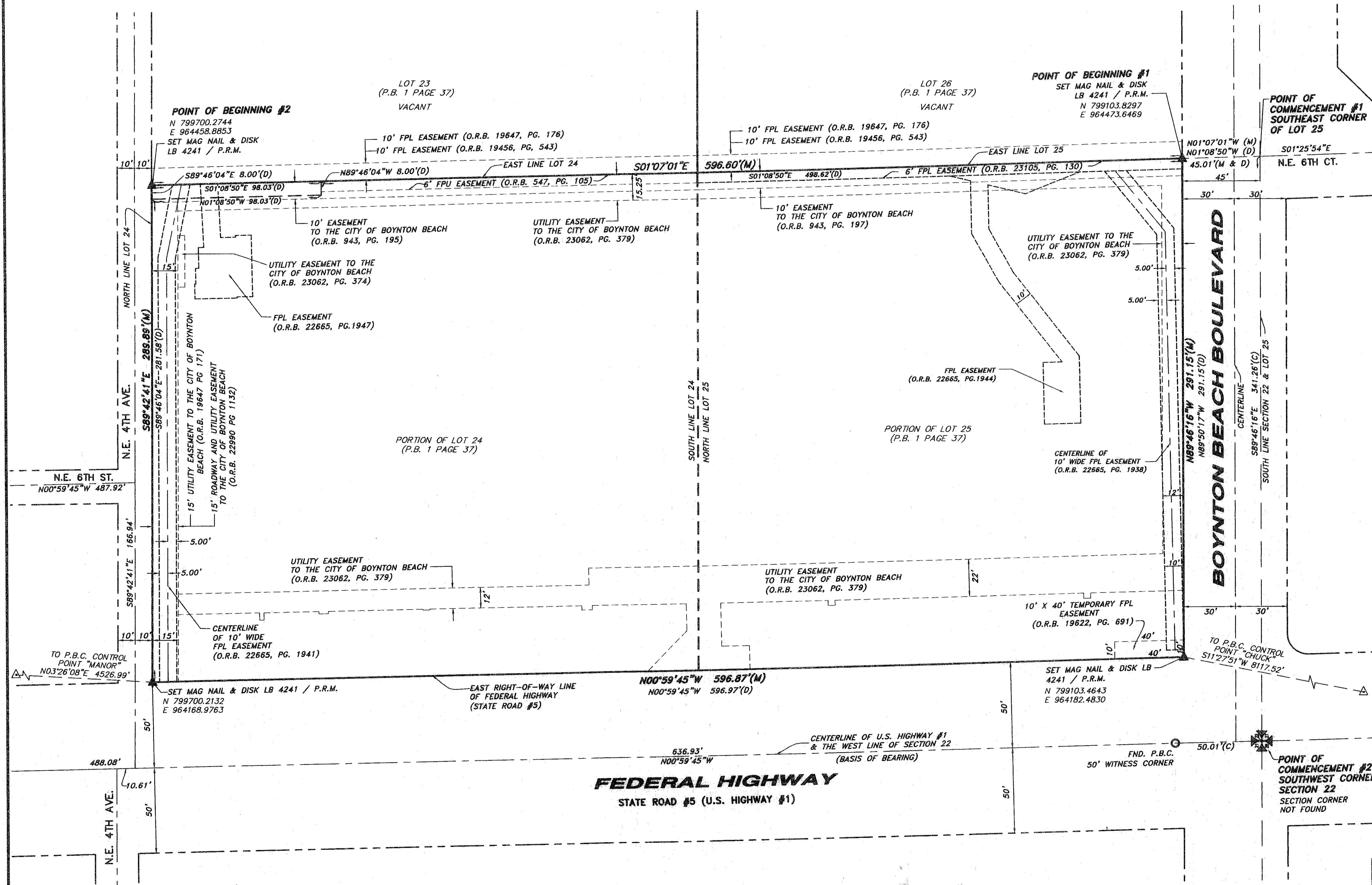
# PROMENADE PLACE

BEING A REPLAT OF A PORTION OF LOTS 24 & 25, OF THE PLAT OF DEWEY'S SUBDIVISION AS RECORDED IN PLAT BOOK 1, PAGE 37 OF THE PUBLIC RECORDS OF PALM BEACH COUNTY, FLORIDA. LYING IN SECTION 22, TOWNSHIP 45 SOUTH, RANGE 43 EAST, PALM BEACH COUNTY, FLORIDA AND THE CITY OF BOYNTON BEACH, PALM BEACH COUNTY, FLORIDA

MARCH 2009

SHEET 2 OF 2

84



**LEGEND**

- (D) = DEED
- (C) = CALCULATED
- FND. = FOUND
- FPL = FLORIDA POWER & LIGHT
- FPU = FLORIDA PUBLIC UTILITIES
- (M) = MEASURED
- O.R.B. = OFFICIAL RECORD BOOK
- P.B. = PLAT BOOK
- P.B.C. = PALM BEACH COUNTY
- PG. = PAGE
- P.O.C. = POINT OF COMMENCEMENT
- P.O.B. = POINT OF BEGINNING
- ▲ = SET MAG NAIL & DISK (L.B. 4241 P.R.M.)

**F.R.S. & ASSOCIATES, INC.**  
 LAND SURVEYORS AND LAND PLANNERS  
 CERTIFICATE OF AUTHORIZATION NO. LB 4241  
 901 NORTHPOINT PARKWAY, SUITE 301  
 WEST PALM BEACH, FLORIDA 33407-1953  
 PHONE (561) 478-7178 FAX (561) 478-7922

SCALE: 1" = 30'	DRAWN BY: DLS	F.B. P-3/30-31	CADD REF. T: DRAWN PROMENADE AutoCAD2009\PLAT.DWG
DATE: 3/2009	APPR. BY: GPW		JOB NUMBER: D 07-012.A
<b>PROMENADE PLACE</b>			SHEET 2 OF 2
SECTION 22, TOWNSHIP 45 SOUTH, RANGE 43 EAST			
PALM BEACH COUNTY, FLORIDA			

THIS INSTRUMENT PREPARED BY DAVID L. SMITH, P.S.M. IN THE OFFICES OF F.R.S. & ASSOCIATES, INC., 901 NORTHPOINT PARKWAY, SUITE 301, WEST PALM BEACH, FLORIDA. PHONE: (561) 478-7178