

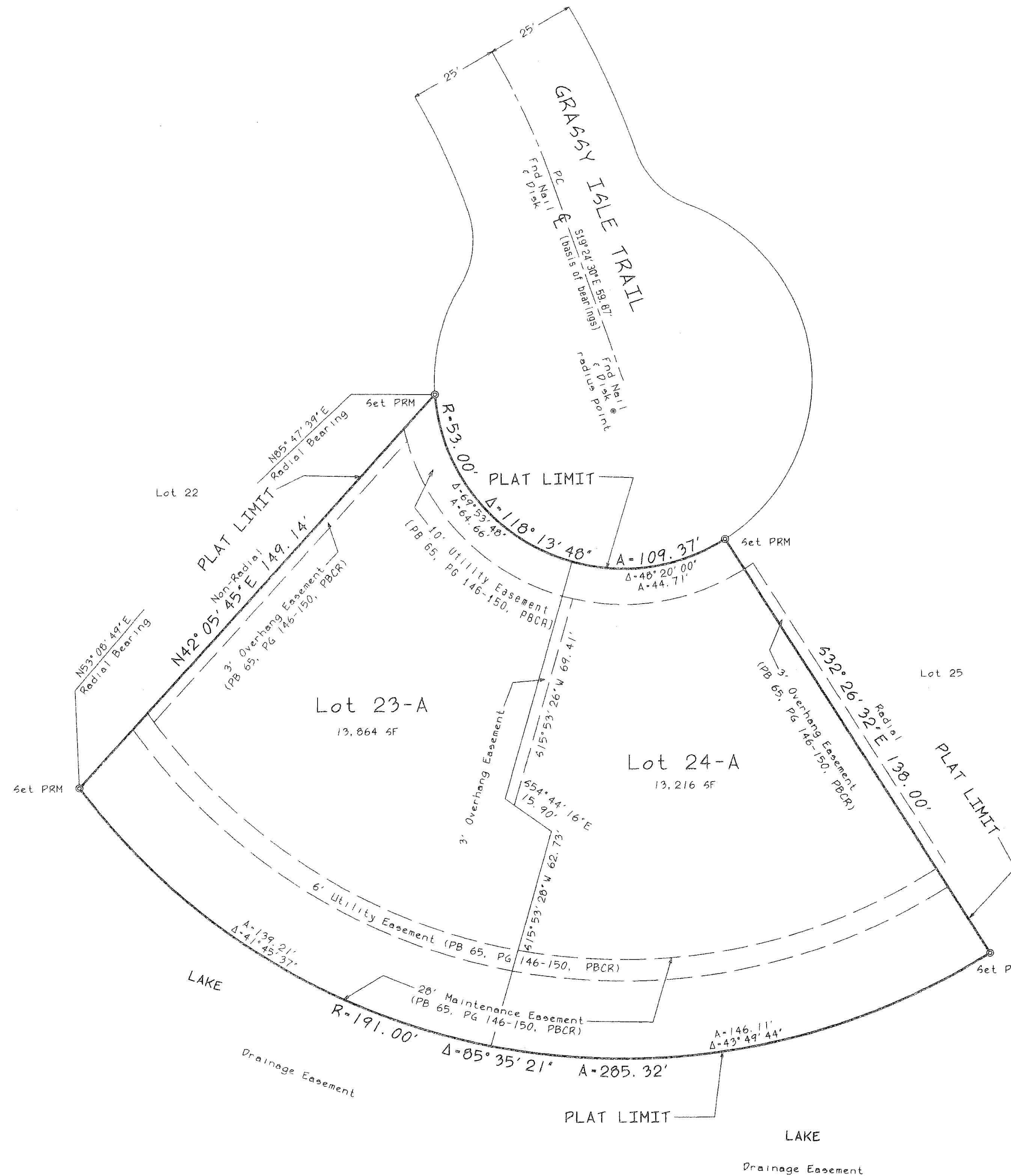
WHITELY PLAT

A REPLAT OF LOTS 23 AND 24, BLOCK 6, LAKES OF SHERBROOKE PHASE 9, AS RECORDED IN PLAT BOOK 65, PAGE 146 OF THE PUBLIC RECORDS OF PALM BEACH COUNTY, FLORIDA, LYING IN SECTION 32, TOWNSHIP 44 SOUTH, RANGE 42 EAST, PALM BEACH COUNTY, FLORIDA.

70

SURVEYOR'S NOTES:

1. \odot P.R.M. Indicates Permanent Reference Monument (6" round concrete monument with aluminum disk stamped DENI LAND SURVEYORS, P.R.M., LB #7281)
2. Bearings shown hereon are relative to the centerline of Grassy Isle Trail, as recorded in Plat Book 65, Pages 146-150 of the Public Records of Palm Beach, Florida. The referenced bearing lines bears North $19^{\circ}24'30''$ West.
3. Gross and area: 27,080 s.f. 0.62 acres

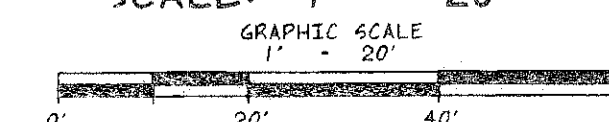


LEGEND:

- A - Arc length
- CL - Centerline
- ID - Identification
- LB - Licensed Business
- ORB - Official Records Book
- O/S - offset
- PB - Plat Book
- PBCR - Palm Beach County Records
- PG - Page
- R - Radius
- R/W - Right-of-Way
- SF - Square Footage
- Δ - Central Angle

NOTICE:
THIS PLAT AS RECORDED IN ITS GRAPHIC FORM IS THE OFFICIAL DEPICTION OF THE SUBDIVIDED LANDS DESCRIBED HEREON AND WILL IN NO CIRCUMSTANCES BE SUPPLANTED IN AUTHORITY BY ANY OTHER GRAPHIC OR DIGITAL FORM OF THE PLAT. THERE MAY BE ADDITIONAL RESTRICTIONS THAT ARE NOT RECORDED ON THIS PLAT THAT MAY BE FOUND IN THE PUBLIC RECORDS OF THIS COUNTY.

SCALE: 1" = 20'



THIS INSTRUMENT WAS PREPARED BY:
DENI LAND SURVEYORS, INC.
1991 N.W. 35TH AVENUE, COCONUT CREEK, FLORIDA 33066
PHONE (954)973-7966 FAX (954)979-0343

SHEET 2 of 2