

Palm Beach Park of Commerce, P.I.P.D. - Plat 14

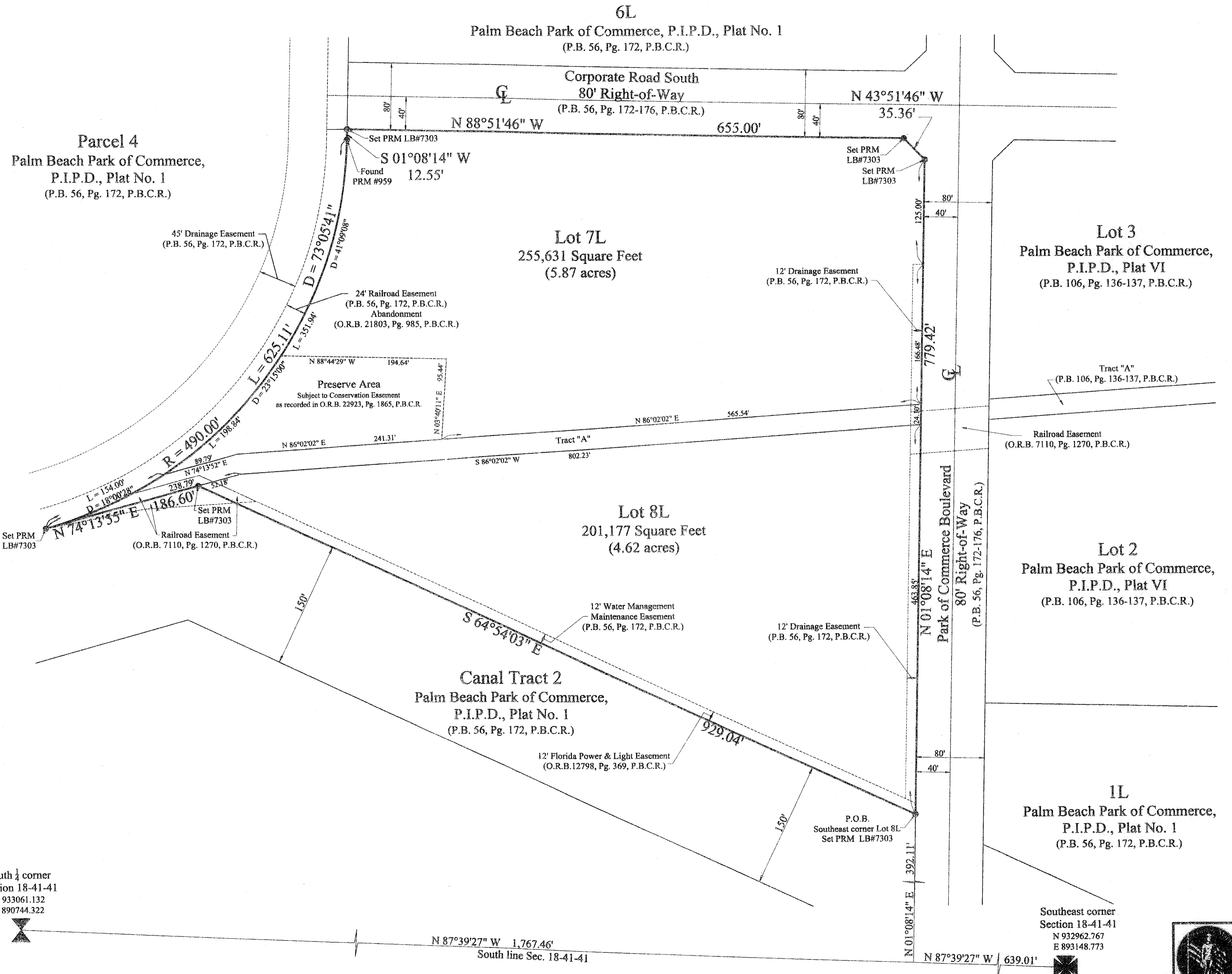
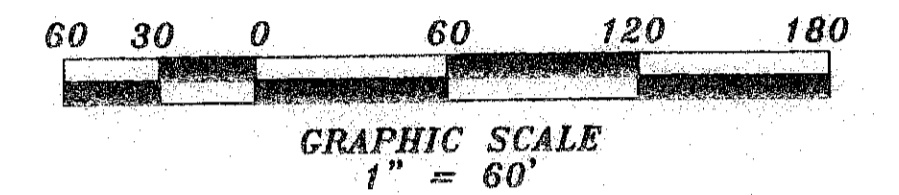
Being a replat of Lots 7L and 8L, Palm Beach Park of Commerce, a P.I.P.D., Plat No. 1, Plat Book 56, Pages 172-176, lying within Section 18, Township 41 South, Range 41 East, Palm Beach County, Florida

606

State of Florida
 County of Palm Beach
 This plat was filed for record at _____ M.
 This _____ day of _____
 A.D. 2009 and duly recorded in Plat Book _____ on
 Pages _____ and _____.

Sharon R. Bock
 Clerk & Comptroller
 Palm Beach County

By: _____
 Deputy Clerk



Bearing Reference:
 The Bearings shown hereon are referenced to the South Line of Lot 6L, as shown on the plat of Palm Beach Park of Commerce, A P.I.P.D., Plat No. 1, as recorded in Plat Book 56, Page 172-176, of the Public Records of Palm Beach County, Florida. Said Line bears North 88°51'46" West.

Legend

P.O.B. = Point of Beginning (C) = Calculated
 P.O.C. = Point of Commencement (M) = Measured
 P.B. = Plat Book (P) = Plat
 Pg. = Page
 P.B.C.R. = Palm Beach County Records
 O.R.B. = Official Records Book
 C = Centerline

Patriot Surveying and Mapping, Inc.
 3748 NW 124th Avenue
 Coral Springs, Florida 33065
 Phone: (954) 509-0083 Fax: (866) 495-0203
 LB # 7303