

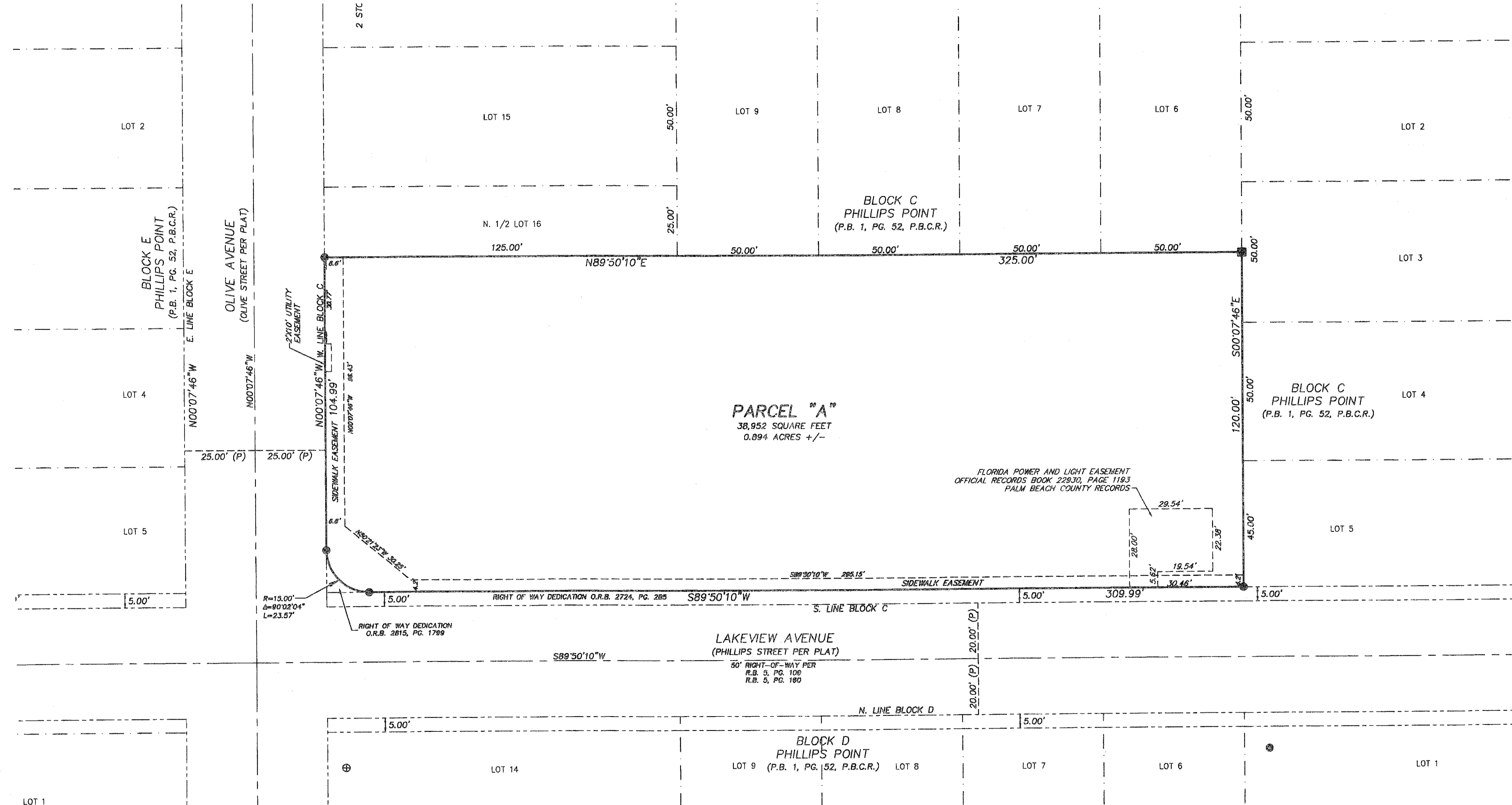
295 LAKEVIEW

A REPLAT OF A PORTION OF BLOCK C, PHILLIPS POINT, ACCORDING TO THE PLAT THEREOF
 RECORDED IN PLAT BOOK 1, PAGE 52, OF THE PUBLIC RECORDS OF PALM BEACH COUNTY, FLORIDA
 LYING IN SECTION 22, TOWNSHIP 43 SOUTH, RANGE 43 EAST
 CITY OF WEST PALM BEACH, PALM BEACH COUNTY, FLORIDA

64

STATE OF FLORIDA
 COUNTY OF PALM BEACH
 THIS PLAT WAS FILED FOR RECORD AT _____
 THIS _____ DAY OF _____, 20____
 AND DULY RECORDED IN PLAT BOOK NO. _____
 ON PAGES _____
 SHARON R. BOCK,
 CLERK & COMPTROLLER
 BY _____ DEPUTY CLERK

SHEET 2 OF 2 SHEETS



LEGEND

- Δ DELTA
- L ARC LENGTH
- O.R.B. OFFICIAL RECORDS BOOK
- (P) PLAT
- P.B. PLAT BOOK
- P.B.C.R. PALM BEACH COUNTY RECORDS
- PG. PAGE
- R RADIUS
- R.B. ROAD PLAT BOOK
- ⊕ SET PERMANENT REFERENCE MONUMENT LB 271 NAIL AND DISC IN CONCRETE
- ⊙ SET PERMANENT REFERENCE MONUMENT LB 271 IN 4X4 CONCRETE MONUMENT

THIS INSTRUMENT WAS PREPARED BY:
 DOUGLAS M. DAVIE, P.S.M. #4343 OF
GRAVEN-THOMPSON & ASSOCIATES, INC.
 ENGINEERS • PLANNERS • SURVEYORS
 3563 N.W. 53RD STREET FORT LAUDERDALE, FLORIDA 33309
 TEL.: (954) 738-6400 FAX: (954) 738-6409
 MAY 2007 01-0071.03