

Palm Beach Park of Commerce, P.I.P.D. - Plat 15

A portion of land located in Section 17, Township 41 South, Range 41 East, and a replat of a portion of Tract A, *Calbut Genpar*, according to the plat thereof, as recorded in Plat Book 45, Pages 70 and 71, Palm Beach County, Florida

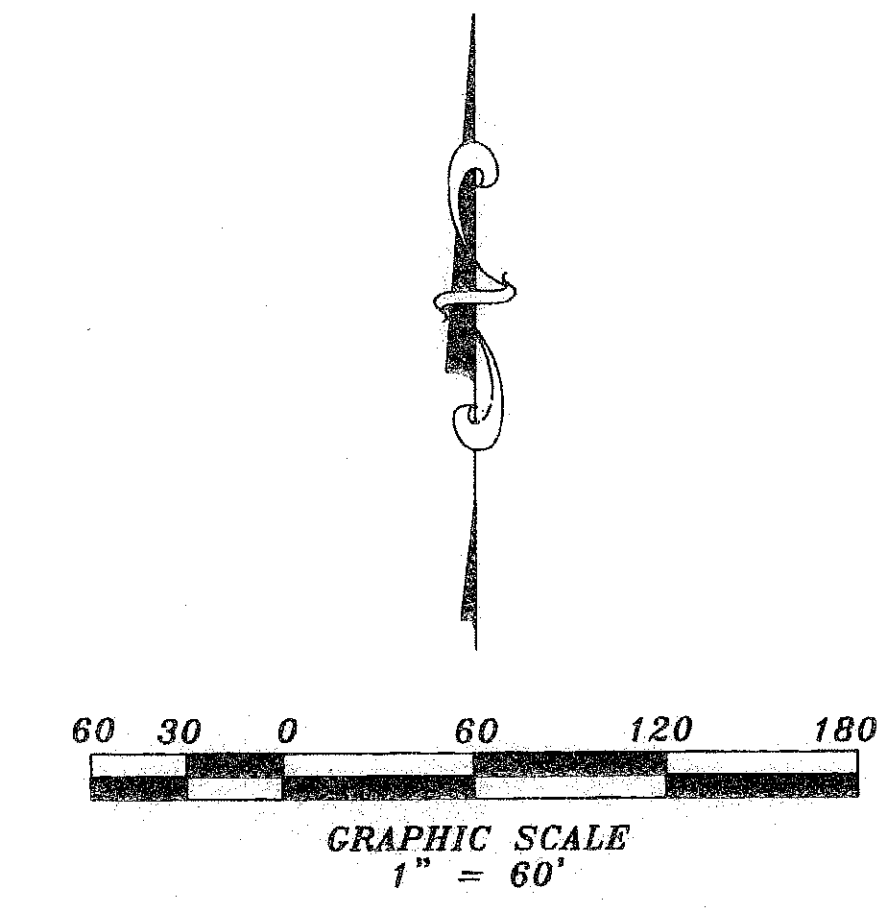
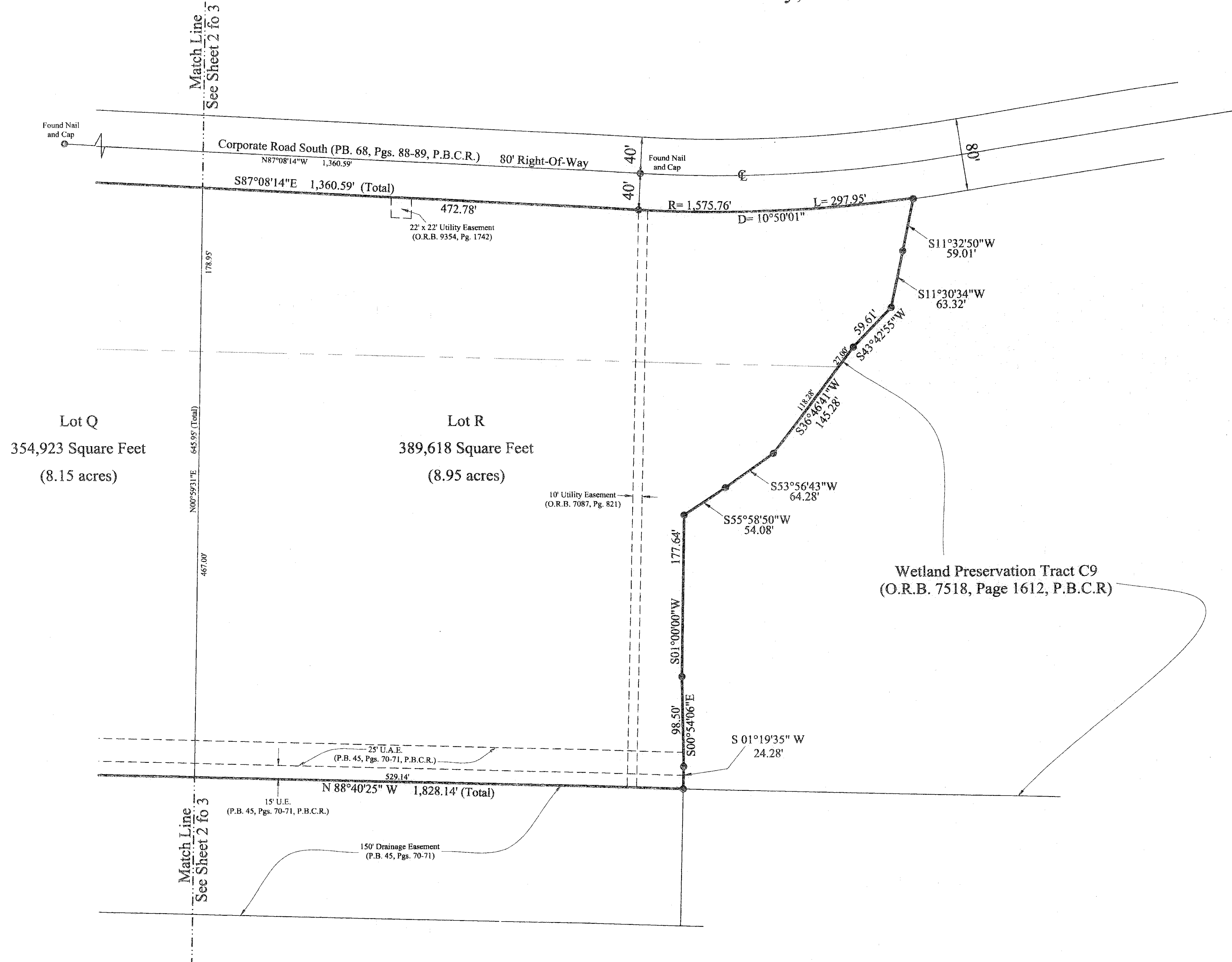
54

State of Florida
County of Palm Beach
This plat was filed for record at _____ M.
This _____ day of _____
A.D. ~~2008~~ and duly recorded
in Plat Book _____ on
Pages _____ and _____.

Sharon R. Bock
Clerk & Comptroller
Palm Beach County

By: _____
Deputy Clerk

Sheet 3 of 3



Bearing Reference:

The Bearings shown hereon are referenced to the Centerline of Corporate Road South, as shown on the plat of *Palm Beach park of Commerce, A.P.I.P.D., Plat No. 4*, as recorded in Plat Book 68, Page 88-89, of the Public Records of Palm Beach County, Florida. Said Line bears North 87°08'14" West.

Legend:

- P.O.B. = Point of Beginning
- P.O.C. = Point of Commencement
- P.B. = Plat Book
- Pg. = Page
- P.B.C.R. = Palm Beach County Records
- O.R.B. = Official Records Book
- R/W = Right-Of-Way
- C = Centerline
- U.A.E. = Utility Access Easement
- U.E. = Utility Easement



Patriot Surveying and Mapping, Inc.
3748 NW 124th Avenue
Coral Springs, Florida 33065
Phone: (954) 509-0083 Fax: (866) 495-0203
LB # 7303