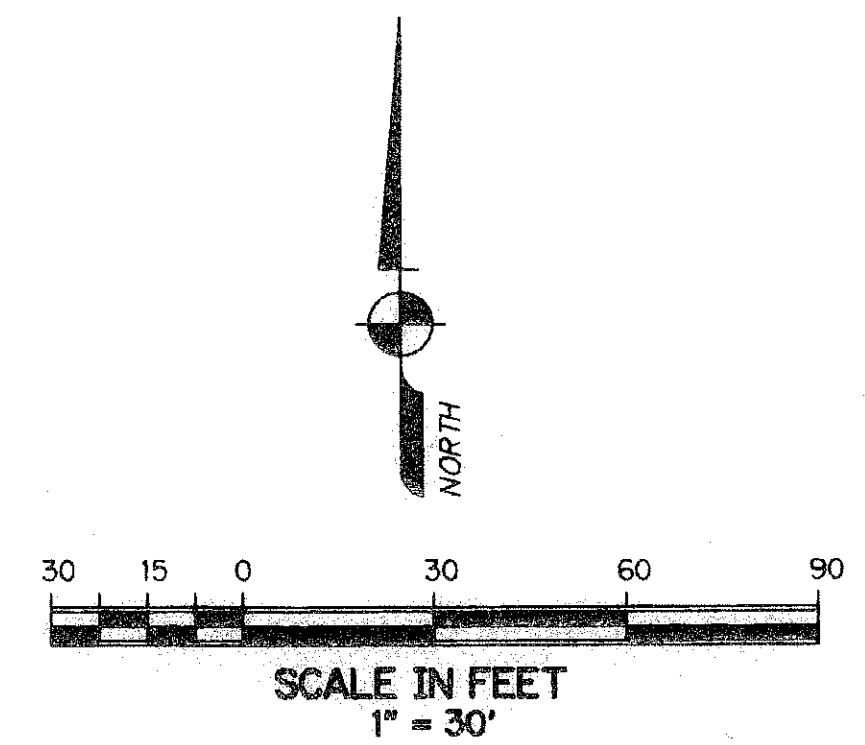


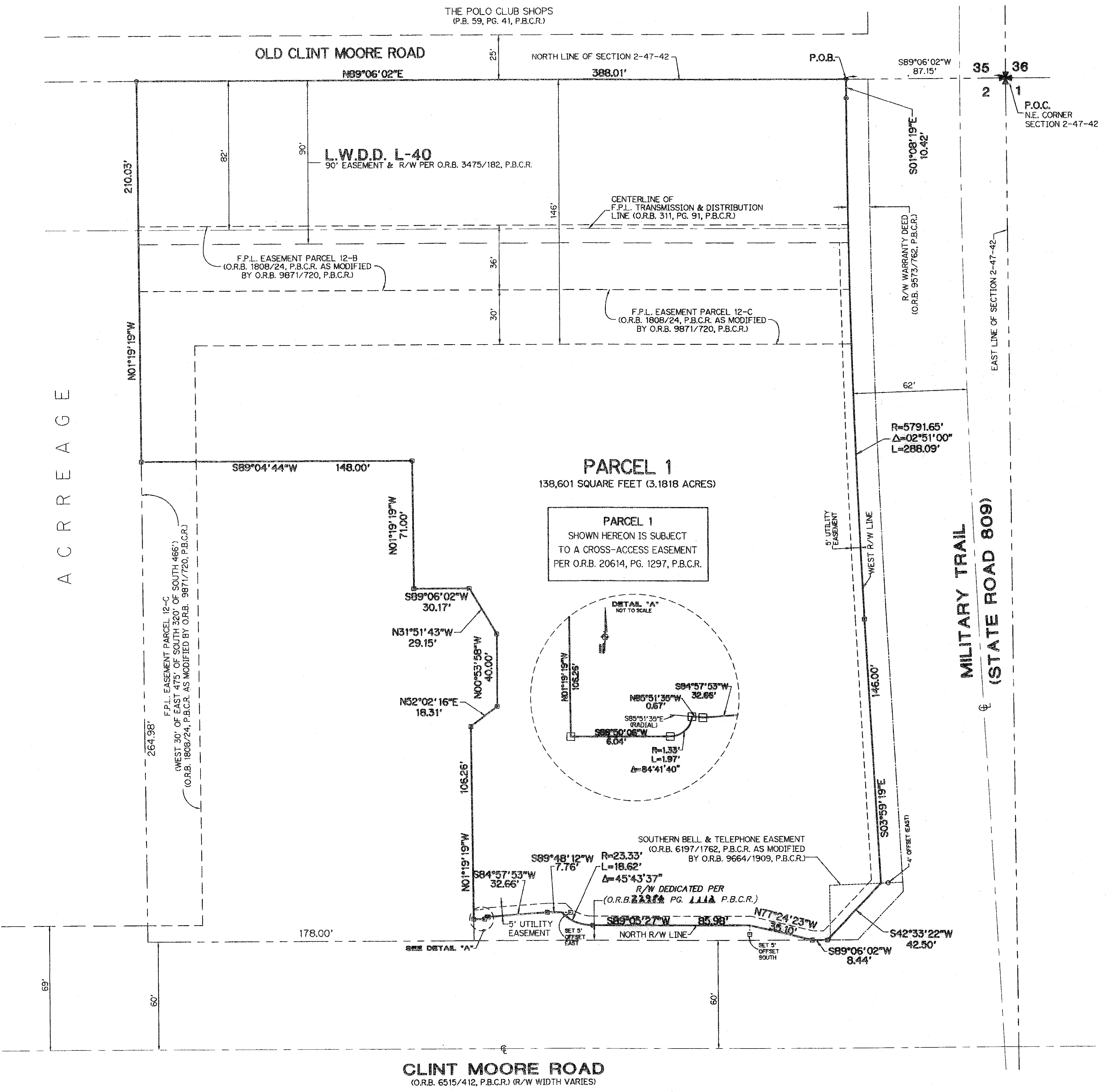
# GLADES / ROX NORTH

A PORTION OF NORTHEAST QUARTER OF SECTION 2, TOWNSHIP 47 SOUTH, RANGE 42 EAST  
CITY OF BOCA RATON, PALM BEACH COUNTY, FLORIDA.

STATE OF FLORIDA  
COUNTY OF PALM BEACH  
This plat was filed for record at \_\_\_\_\_ this \_\_\_\_\_ day of \_\_\_\_\_ 2008,  
and duly recorded in Plat Book \_\_\_\_\_ Pages \_\_\_\_\_ through \_\_\_\_\_  
By: \_\_\_\_\_  
SHARON R. BOCK  
Clerk and Comptroller



SHEET 2 OF 2



- SURVEYOR'S NOTES:**
- NO BUILDINGS OR ANY KIND OF CONSTRUCTION OR TRESS OR SHRUBS SHALL BE PLACED ON ANY EASEMENT WITHOUT PRIOR WRITTEN APPROVAL OF ALL EASEMENT BENEFICIARIES AND ALL APPLICABLE CITY APPROVALS OR PERMITS AS REQUIRED FOR SUCH ENCROACHMENTS.
  - BEARINGS SHOWN HEREON ARE ASSUMED BASED ON THE NORTH LINE OF SECTION 2-47-42 HAVING A BEARING OF N89°06'02"E.
  - BUILDING SETBACK LINES SHALL BE AS REQUIRED BY CURRENT CITY OF BOCA RATON ZONING REGULATIONS.
  - IN INSTANCE WHERE DRAINAGE AND UTILITY EASEMENTS INTERSECT, CONSTRUCTION, OPERATION, AND MAINTENANCE OF UTILITIES WITHIN THESE AREA OF INTERSECTION SHALL NOT INTERFERE WITH THE CONSTRUCTION, OPERATION, AND MAINTENANCE OF DRAINAGE FACILITIES.
  - DIMENSIONS SHOWN HEREON ARE IN FEET AND DECIMAL PARTS THEREOF AND ARE BASED ON THE DEFINITION OF FOOT AS ADOPTED BY THE UNITED STATES BUREAU OF STANDARDS AND REFER TO THE HORIZONTAL PLANE.
  - ABBREVIATION LEGEND: A = ARC LENGTH; C = CENTERLINE; Δ = Central Angle; D = DEED; EL = ELEVATION; ESMT. = EASEMENT; FD. = FOUND; F.P.L. = FLORIDA POWER & LIGHT COMPANY; ID. = IDENTIFICATION; I.P. = IRON PIPE; I.R. = IRON ROD; L.B. = LICENSED BUSINESS; MS. = MEASURED; P.B. = PLAT BOOK; PG. = PAGE; P.O.B. = POINT OF BEGINNING; P.O.C. = POINT OF COMMENCEMENT; O.R.B. = OFFICIAL RECORDS BOOK; P.B.C.R. = PALM BEACH COUNTY RECORDS; P.L.S. = PROFESSIONAL LAND SURVEYOR; P.R.M. = PERMANENT REFERENCE MONUMENT; R/W = RIGHT-OF-WAY; R = RADIUS; U.E. = UTILITY EASEMENT; W/CAP = WITH SURVEYORS CAP; L.W.D.D. = LAKE WORTH DRAINAGE DISTRICT.

- SYMBOL LEGEND:**
- ◻ INDICATES SET PERMANENT REFERENCE MONUMENT - 4"x4"x24" CONCRETE MONUMENT, WITH BRASS DISK STAMPED, L.B. #3300, UNLESS OTHERWISE NOTED.
  - INDICATES SET NAIL WITH BRASS DISC STAMPED L.B. #3300 (UNLESS OTHERWISE NOTED).

AREA TABULATION:	
PARCEL 1	138,601 SQUARE FEET (3.1818 ACRES)

**NOTICE:**  
THIS PLAT, AS RECORDED IN ITS GRAPHIC FORM, IS THE OFFICIAL DEPICTION OF THE SUBDIVIDED LANDS DESCRIBED HEREIN AND WILL IN NO CIRCUMSTANCES BE SUPPLANTED IN AUTHORITY BY ANY OTHER GRAPHIC OR DIGITAL FORM OF THE PLAT. THERE MAY BE ADDITIONAL RESTRICTIONS THAT ARE NOT RECORDED ON THIS PLAT THAT MAY BE FOUND IN THE PUBLIC RECORDS OF PALM BEACH COUNTY.

THIS INSTRUMENT WAS PREPARED BY:  
JOHN T. DOOGAN, P.L.S.  
**AVIROM & ASSOCIATES, INC.**  
SURVEYING & MAPPING  
50 S.W. 2nd AVENUE, SUITE 102  
BOCA RATON, FLORIDA 33432  
(561) 392-2594  
OCTOBER, 2008