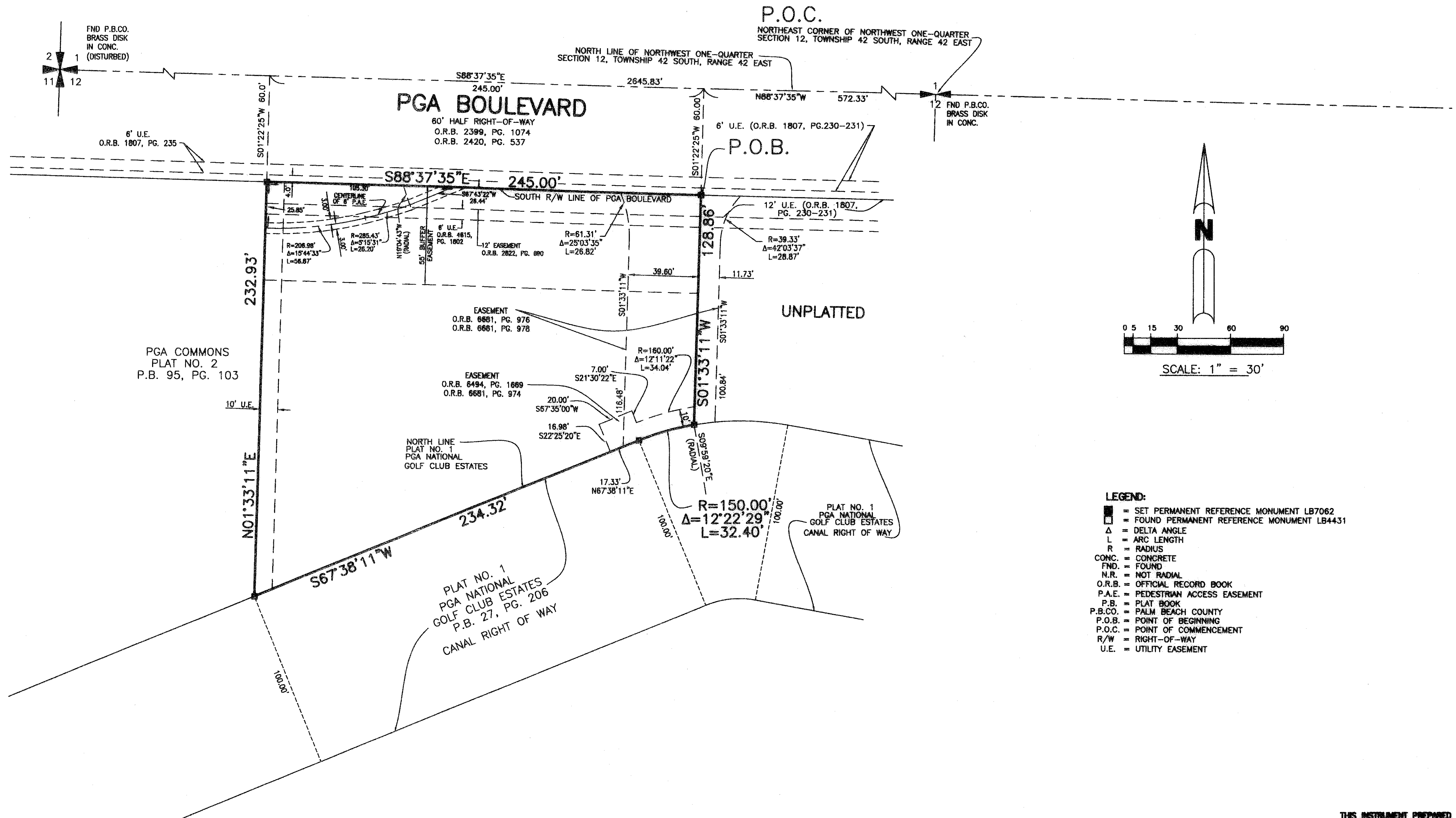


TURTLE BEACH BANK

A PARCEL OF LAND BEING A PORTION OF THE NORTHWEST QUARTER (N.W. 1 /4)
OF SECTION 12, TOWNSHIP 42 SOUTH, RANGE 42 EAST
AND LYING WITHIN THE CITY OF PALM BEACH GARDENS,
PALM BEACH COUNTY, FLORIDA

SHEET 2 OF 2 AUGUST, 2007



- LEGEND:**
- = SET PERMANENT REFERENCE MONUMENT LB7062
 - = FOUND PERMANENT REFERENCE MONUMENT LB4431
 - Δ = DELTA ANGLE
 - L = ARC LENGTH
 - R = RADIUS
 - CONC. = CONCRETE
 - FND. = FOUND
 - N.R. = NOT RADIAL
 - O.R.B. = OFFICIAL RECORD BOOK
 - P.A.E. = PEDESTRIAN ACCESS EASEMENT
 - P.B. = PLAT BOOK
 - P.B.CO. = PALM BEACH COUNTY
 - P.O.B. = POINT OF BEGINNING
 - P.O.C. = POINT OF COMMENCEMENT
 - R/W = RIGHT-OF-WAY
 - U.E. = UTILITY EASEMENT

THIS INSTRUMENT PREPARED BY
 WILBUR F. DAVINE, P.S.M. 4100, STATE OF FLORIDA
 ARCADIS U.S., INC.
 ENGINEERS PLANNERS SURVEYORS
 2081 VISTA PARKWAY
 WEST PALM BEACH, FLORIDA 33411
 LB7062