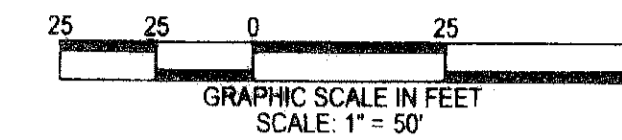


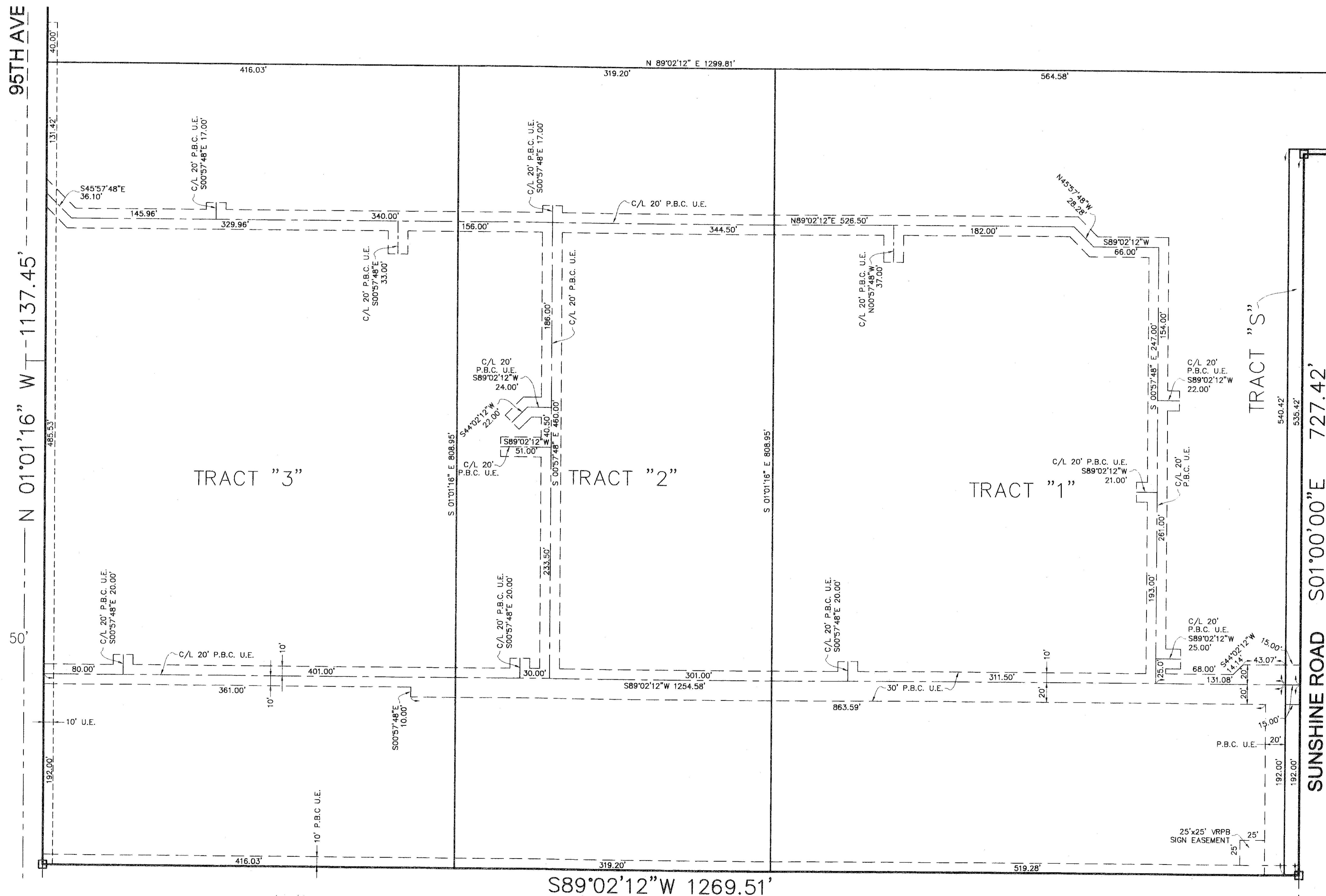
# PAG ROYAL PALM AUTOMOTIVE PARK

BEING A REPLAT OF UAG ROYAL PALM AUTOMOTIVE PARK, AS RECORDED IN PLAT BOOK 109, PAGE 123,  
PUBLIC RECORDS OF PALM BEACH COUNTY, FLORIDA, LYING IN SECTION 31,  
TOWNSHIP 43 SOUTH, RANGE 42 EAST, VILLAGE OF ROYAL PALM BEACH, PALM BEACH COUNTY, FLORIDA  
OCTOBER, 2007 SHEET 2 OF 2



North

172



- LEGEND:
- LB = LICENSED BUSINESS
  - LS = LICENSED SURVEYOR
  - O.R.B. = OFFICIAL RECORD BOOK
  - PB = PLAT BOOK
  - PG. = PAGE
  - FND. = FOUND
  - = PERMANENT REFERENCE MONUMENT LB 4431 (UNLESS OTHERWISE NOTED)
  - U.E. = UTILITY EASEMENT
  - L.A.E. = LIMITED ACCESS EASEMENT
  - ROW = RIGHT-OF-WAY
  - C/L = CENTERLINE
  - PBC = PALM BEACH COUNTY
  - PRM = PERMANENT REFERENCE MONUMENT
  - CM = CONCRETE MONUMENT
  - POB = POINT OF BEGINNING
  - SECT = SECTION
  - TWP = TOWNSHIP
  - RGE = RANGE
  - BLK = BLOCK
  - No. = NUMBER
  - DOT = DEPARTMENT OF TRANSPORTATION
  - LWDD = LAKE WORTH DRAINAGE DISTRICT
  - VRPB = VILLAGE OF ROYAL PALM BEACH
  - WRE = WATER RETENTION EASEMENT

THIS INSTRUMENT PREPARED BY WRAY D. JORDAN, PROFESSIONAL SURVEYOR AND MAPPER, IN THE OFFICES OF LIDBERG LAND SURVEYING, INC., 675 WEST INDIANTOWN ROAD, SUITE 200, JUPITER, FLORIDA 33458. (561) 746-8454. CERTIFICATE OF AUTHORIZATION No. LB 4431.

**LIDBERG LAND SURVEYING, INC.**

675 West Indiantown Road, Suite 200, Jupiter, Florida 33458 TEL. 561-746-8454

CAD K:\AUTOCAD2000\314342\99-122\DWG\99-122-306REPLAT.DWG			
REF K:\AUTOCAD2000\314342\99-122\DWG\99-122-306.DWG			
FLD	B.D.	FB.	FC.
OFF	W.D.J.		
CRD	W.D.J.	SHEET 2 OF 2	DATE 05/30/2007
			DWG D99-122PP