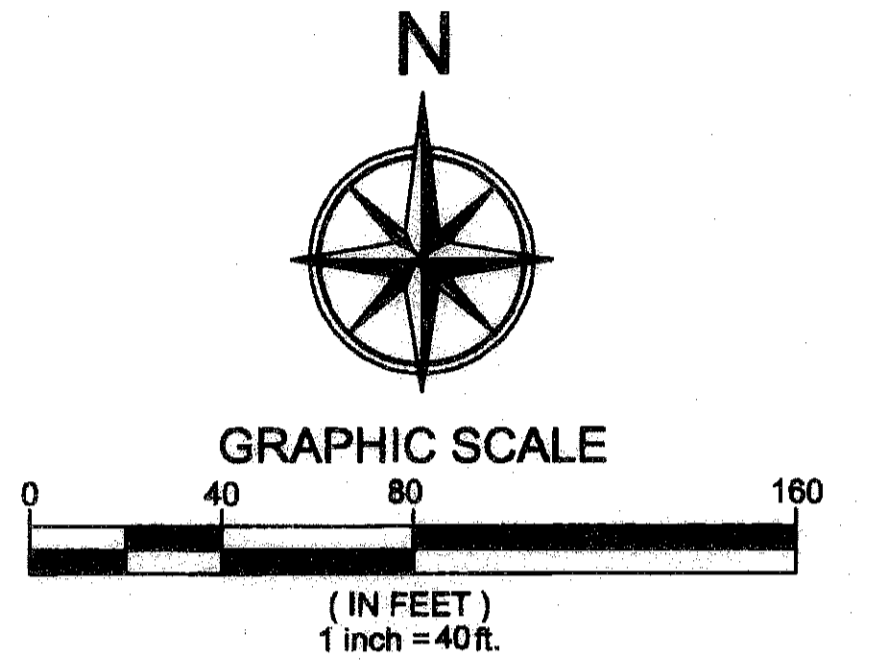


# MINI ASSEMBLAGE P.U.D. PLAT TWO

ALSO KNOWN AS GREYSTONE P.U.D.  
 BEING A REPLAT OF A PORTION OF TRACTS 109, 116, AND 117, BLOCK 55, PALM BEACH FARMS  
 CO., PLAT NO. 3, PLAT BOOK 2, PAGES 45 THROUGH 54, PUBLIC RECORDS OF PALM BEACH  
 COUNTY FLORIDA, BEING IN SECTION 28, TOWNSHIP 45 SOUTH, RANGE 42 EAST PALM BEACH  
 COUNTY, STATE OF FLORIDA  
 AUGUST 2006 SHEET 3 OF 3

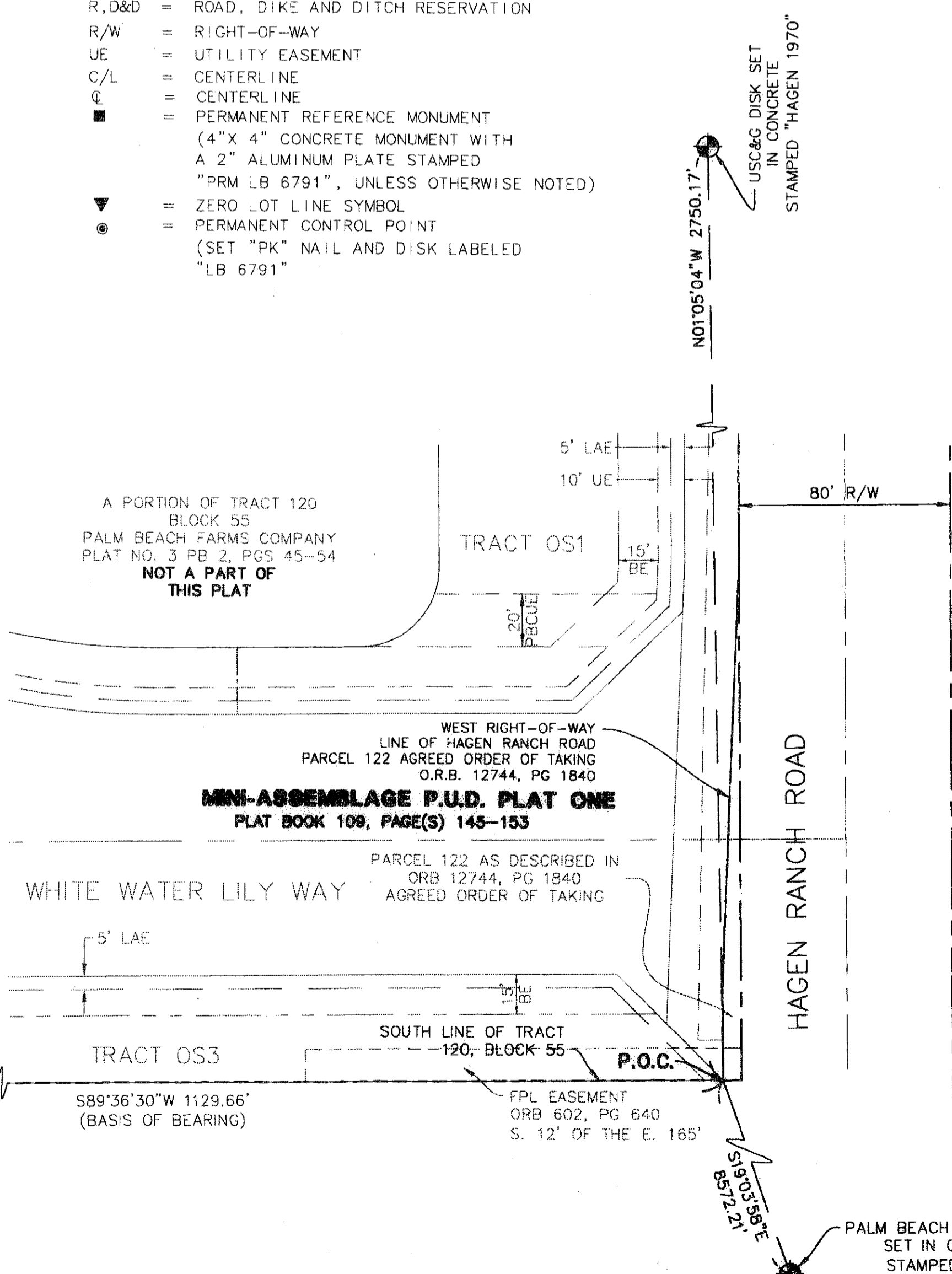
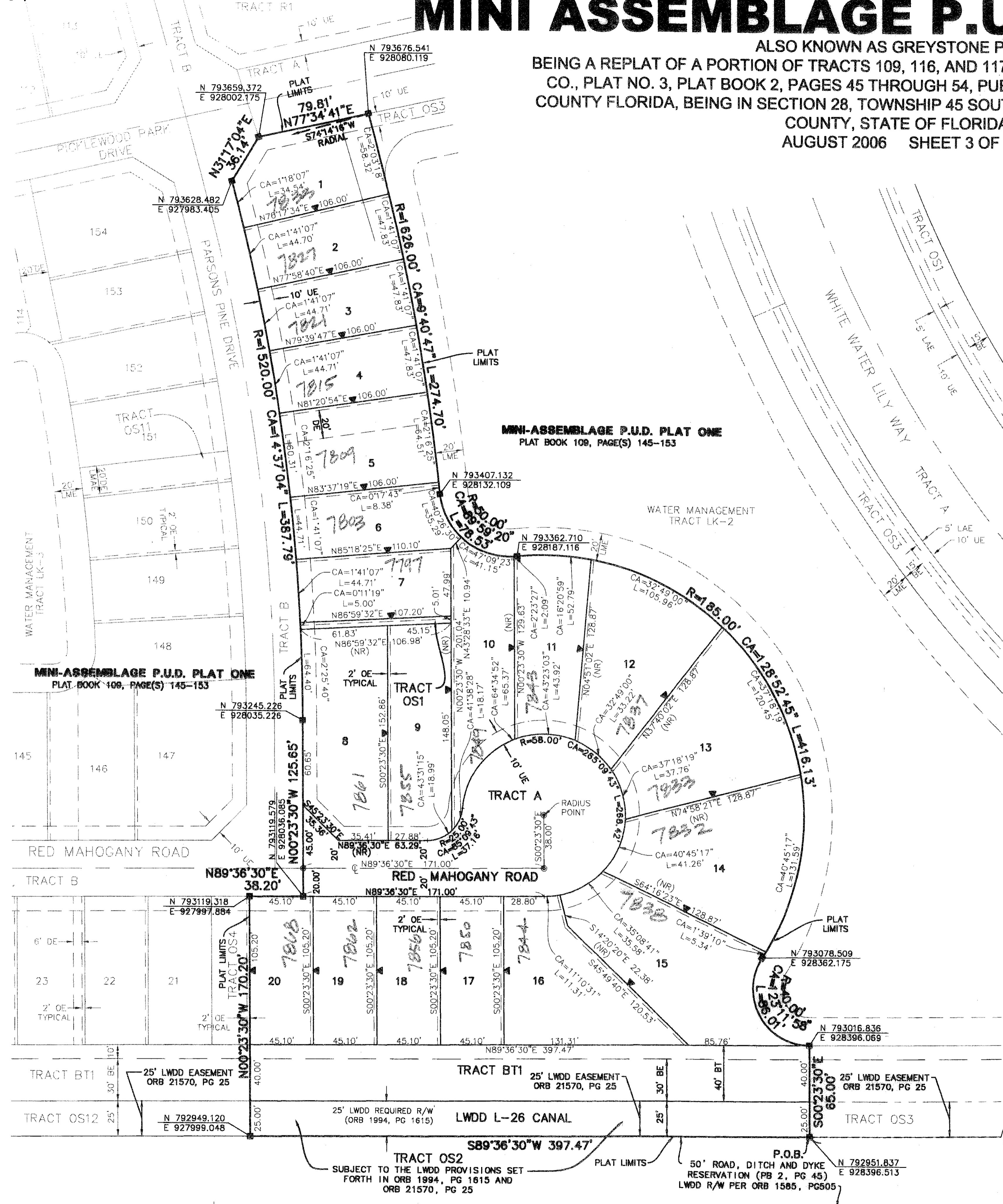
This Instrument Prepared By:  
 Kevin M. Beck, P.S.M.  
 Certificate of Authorization No. LB 6701  
 AUGUST 2006

**CA** Calvin, Giardino & Associates, Inc.  
 Engineers Surveyors Planners  
 550 Village Boulevard, Suite 340  
 West Palm Beach, Florida 33409  
 Phone: 561.654.6161 Fax: 561.654.6380



### LEGEND:

- BE = BUFFER EASEMENT
- BT = BUFFER TRACT
- CA = CENTRAL (DELTA) ANGLE
- CH = CHORD
- DB = DEED BOOK
- DE = DRAINAGE EASEMENT
- ESMT = EASEMENT
- L = ARC LENGTH
- LAE = LIMITED ACCESS EASEMENT
- LMAE = LAKE MAINTENANCE ACCESS EASEMENT
- LME = LAKE MAINTENANCE EASEMENT
- LWDD = LAKE WORTH DRAINAGE DISTRICT
- OE = OVERHANG EASEMENT
- ORB = OFFICIAL RECORDS BOOK
- PB = PLAT BOOK
- PBCUE = PALM BEACH COUNTY UTILITY EASEMENT
- POB = POINT OF BEGINNING
- POC = POINT OF COMMENCEMENT
- P.U.D. = PLANNED UNIT DEVELOPMENT
- PG(S) = PAGE(S)
- (R) = RADIAL
- R,D&D = ROAD, DIKE AND DITCH RESERVATION
- R/W = RIGHT-OF-WAY
- UE = UTILITY EASEMENT
- C/L = CENTERLINE
- CL = CENTERLINE
- = PERMANENT REFERENCE MONUMENT (4" X 4" CONCRETE MONUMENT WITH A 2" ALUMINUM PLATE STAMPED "PRM LB 6791", UNLESS OTHERWISE NOTED)
- ▼ = ZERO LOT LINE SYMBOL
- = PERMANENT CONTROL POINT (SET "PK" NAIL AND DISK LABELED "LB 6791")



7/2/2006 09:50:04 Mini Assemblage Boundary and Plat Survey PLAT 1, PLAT 2, and PLAT 3, 11/21/2006 3:56:24 PM EST  
 REVISED: 06-21-07