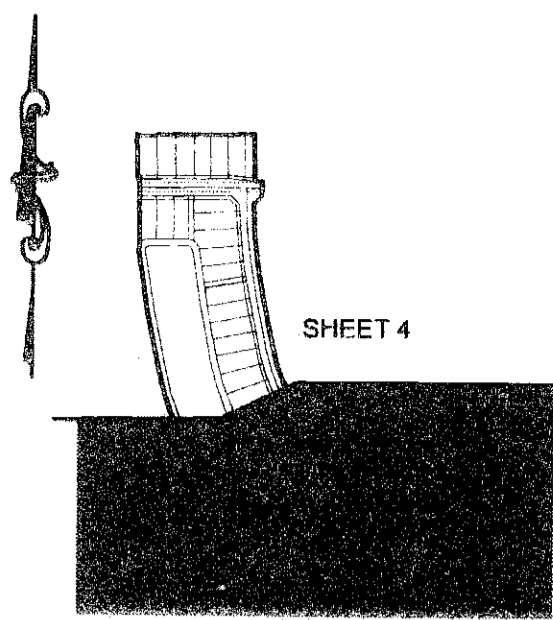
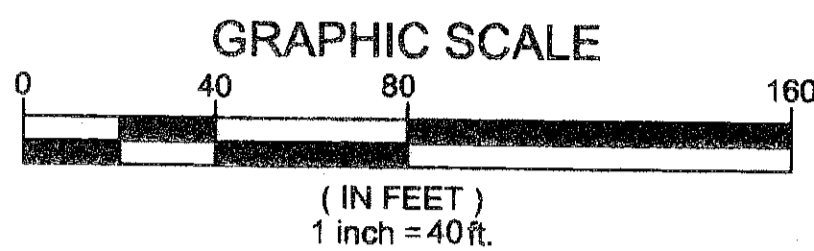
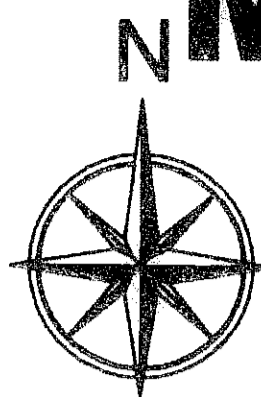


0940.003



SHEET INDEX MAP NOT TO SCALE



# MINI ASSEMBLAGE P.U.D. PLAT THREE

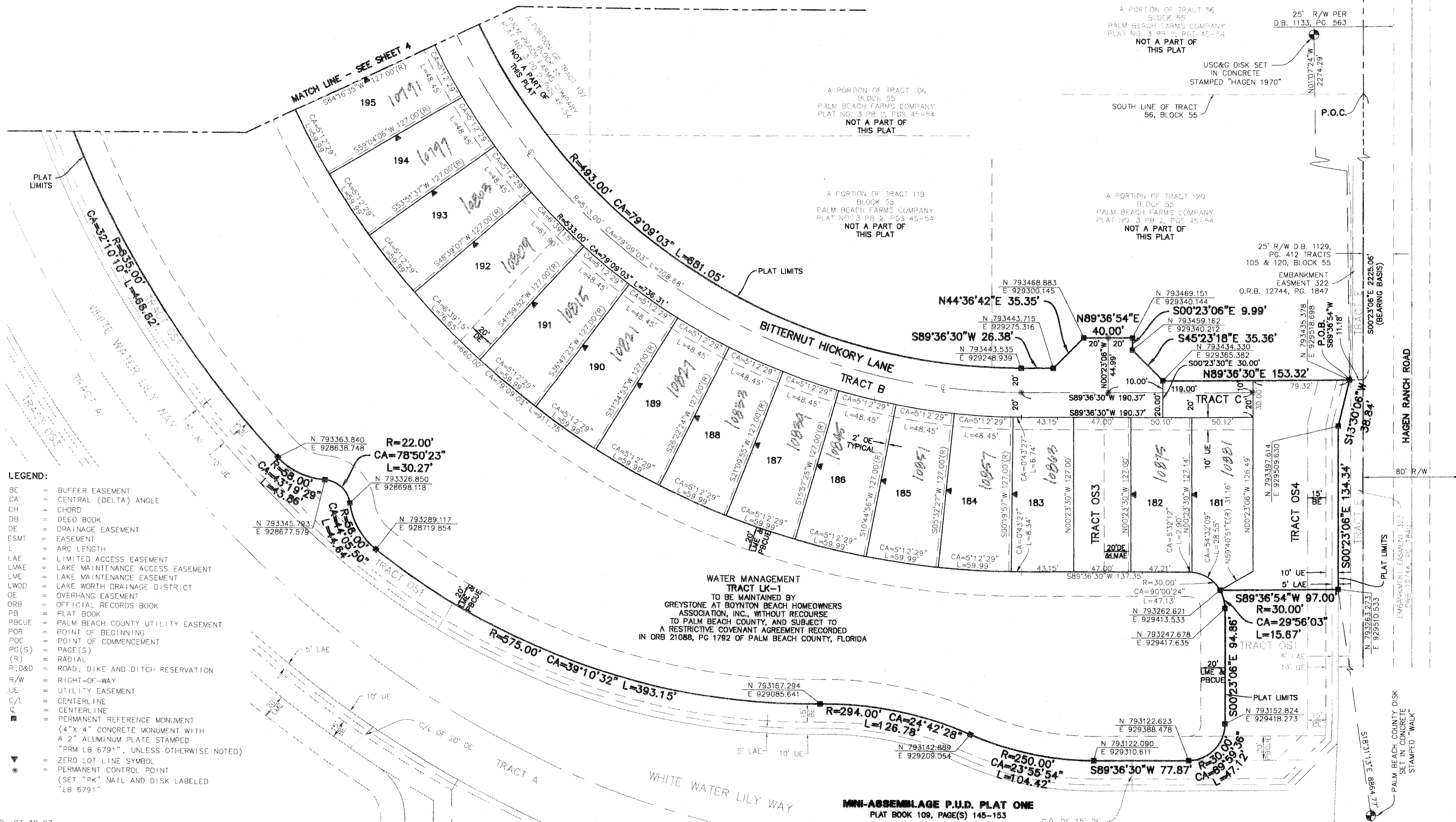
ALSO KNOWN AS GREYSTONE P.U.D.  
BEING A REPLAT OF A PORTION OF TRACTS 85, 86, 107, 108, 117, 118, 119, AND 120, BLOCK 55,  
AND A PORTION OF THE 30 FEET WIDE ROAD, DITCH, AND DYKE RESERVATION LYING WITHIN  
SAID BLOCK 55, PALM BEACH FARMS CO., PLAT NO. 3, PLAT BOOK 2, PAGES 45 THROUGH 54,  
PUBLIC RECORDS OF PALM BEACH COUNTY FLORIDA, BEING IN SECTION 28, TOWNSHIP 45  
SOUTH, RANGE 42 EAST PALM BEACH COUNTY, STATE OF FLORIDA  
AUGUST 2006 SHEET 3 OF 4

143

This Instrument Prepared By:  
Kevin M. Beck, P.S.M.  
Certificate of Authorization No. LB 6781  
AUGUST 2007



Calvin, Giordano & Associates, Inc.  
Engineers Surveyors Planners  
580 Village Boulevard, Suite 340  
West Palm Beach, Florida 33409  
Phone: 561.664.8181 Fax 561.664.8360



- LEGEND:**
- BE = BUFFER EASEMENT
  - CA = CENTRAL (DELTA) ANGLE
  - CH = CHORD
  - DB = DEED BOOK
  - DE = DRAINAGE EASEMENT
  - ESMT = EASEMENT
  - L = ARC LENGTH
  - LAE = LIMITED ACCESS EASEMENT
  - LMAE = LAKE MAINTENANCE ACCESS EASEMENT
  - LME = LAKE MAINTENANCE EASEMENT
  - LWOD = LAKE WORTH DRAINAGE DISTRICT
  - OE = OVERHANG EASEMENT
  - ORB = OFFICIAL RECORDS BOOK
  - PB = PLAT BOOK
  - PBCUE = PALM BEACH COUNTY UTILITY EASEMENT
  - POB = POINT OF BEGINNING
  - POC = POINT OF COMMENCEMENT
  - PG(S) = PAGE(S)
  - (R) = RADIAL
  - R,D&D = ROAD, DIKE AND DITCH RESERVATION
  - R/W = RIGHT-OF-WAY
  - UE = UTILITY EASEMENT
  - C/L = CENTERLINE
  - C = CENTERLINE
  - PERMANENT REFERENCE MONUMENT (4" x 4" CONCRETE MONUMENT WITH A 2" ALUMINUM PLATE STAMPED "PRM LB 6791", UNLESS OTHERWISE NOTED)
  - ZERO LOT LINE SYMBOL
  - PERMANENT CONTROL POINT (SET "PK" NAIL AND DISK LABELED "LB 6791")

WATER MANAGEMENT TRACT LK-1 TO BE MAINTAINED BY GREYSTONE AT BOYNTON BEACH HOMEOWNERS ASSOCIATION, INC., WITHOUT RECOURSE TO PALM BEACH COUNTY, AND SUBJECT TO A RESTRICTIVE COVENANT AGREEMENT RECORDED IN ORB 21088, PG 1792 OF PALM BEACH COUNTY, FLORIDA

MINI-ASSEMBLAGE P.U.D. PLAT ONE  
PLAT BOOK 109, PAGE(S) 145-153

PLAT 052 TRACT A TRACT C052 TRACT C051 TRACT A TRACT B TRACT C TRACT OS1 TRACT OS2 TRACT OS3 TRACT OS4

REVISED: 07-30-07