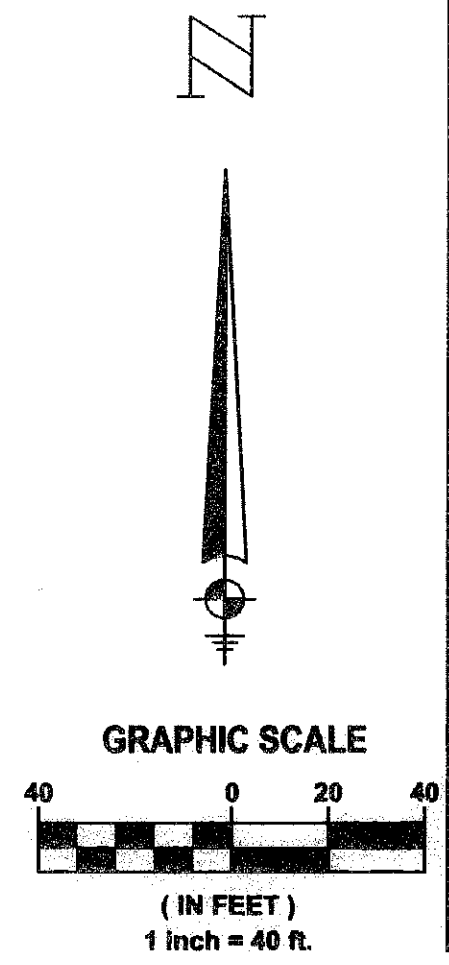
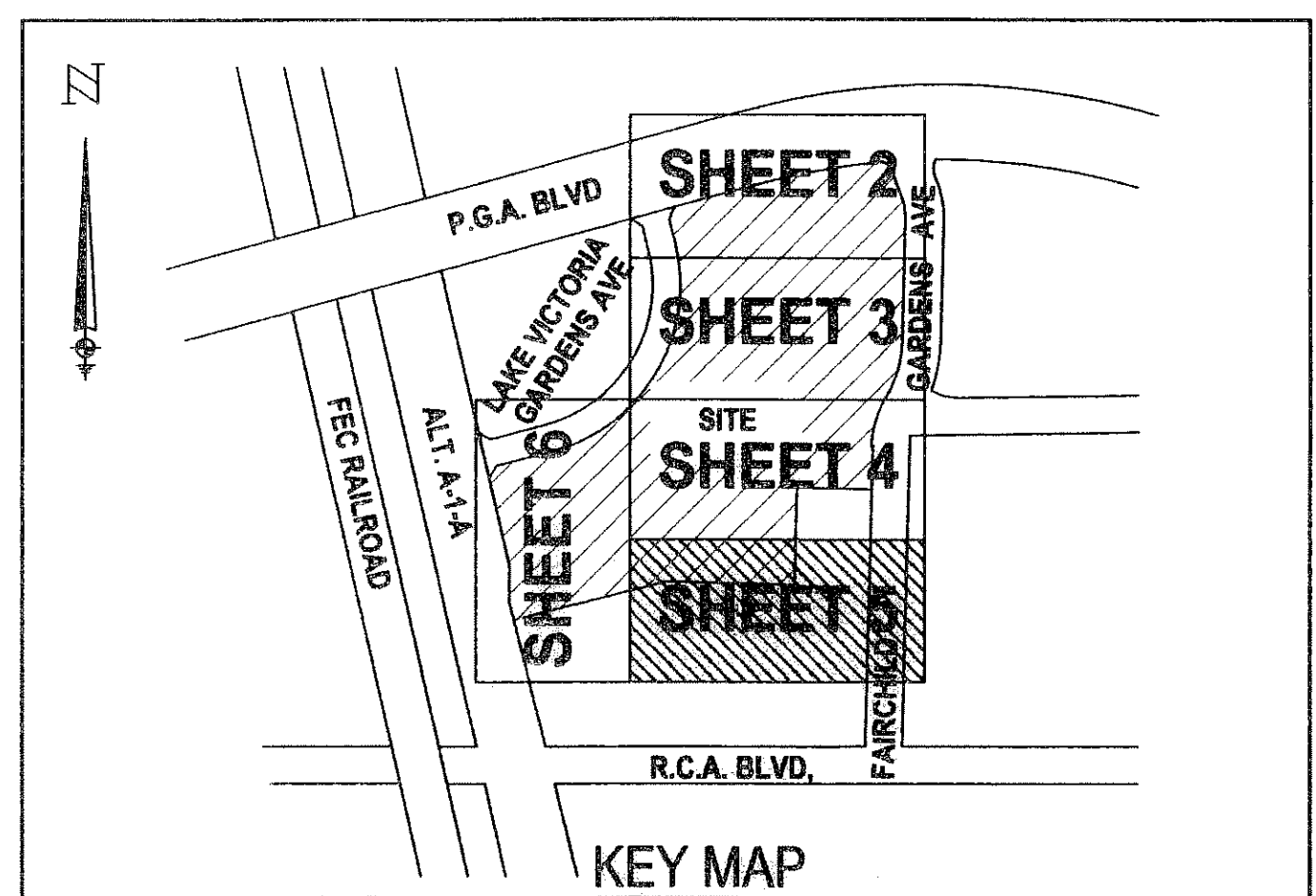


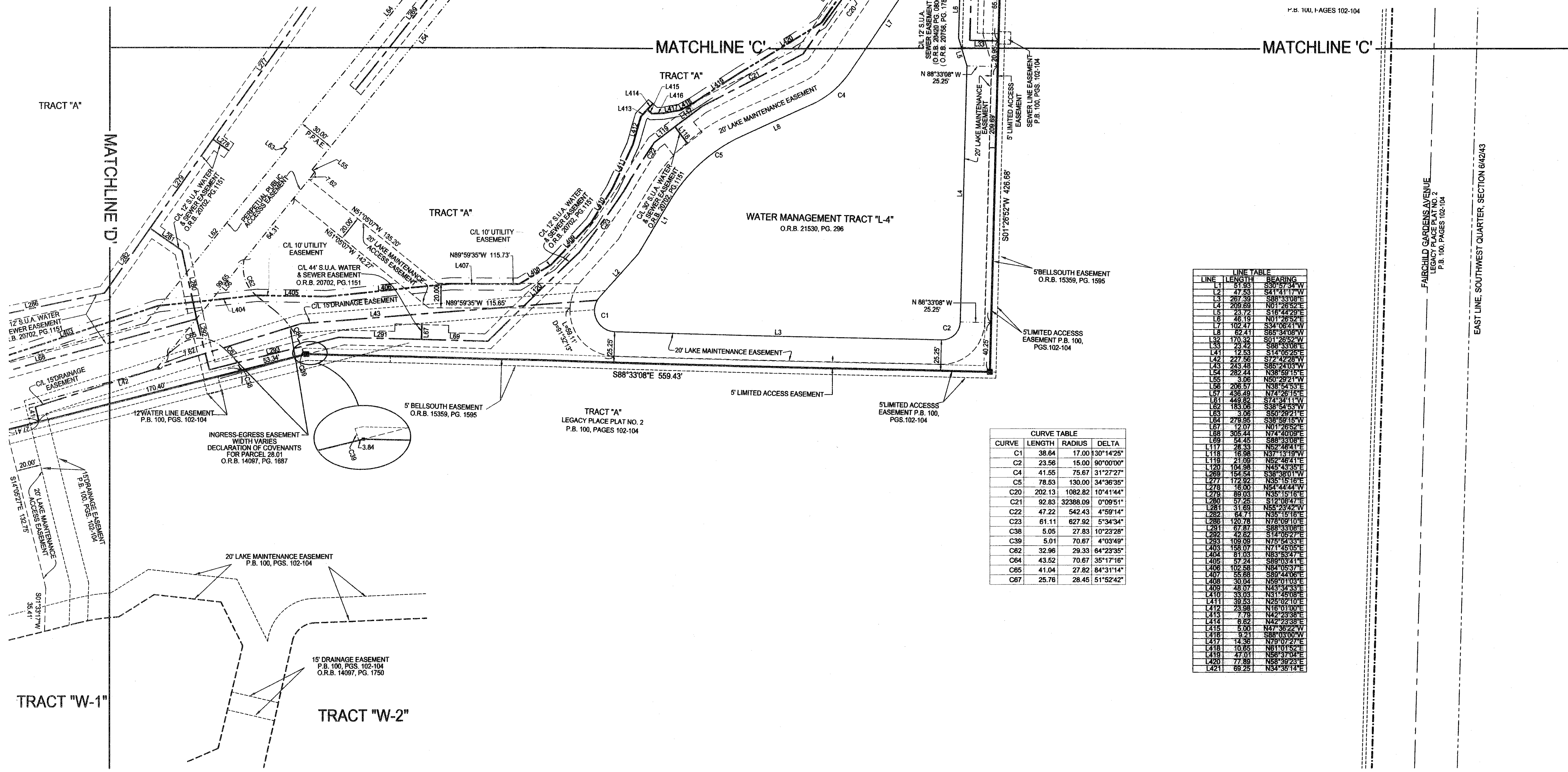
LEGACY PLACE COMMERCIAL REPLAT

BEING A REPLAT OF TRACT "A" AND WATER MANAGEMENT TRACTS "L-1" THROUGH "L-4", LEGACY PLACE COMMERCIAL,
 AS RECORDED IN PLAT BOOK 108, PAGES 29 THROUGH 36, PUBLIC RECORDS OF PALM BEACH COUNTY, FLORIDA
 LYING IN SECTION 6, TOWNSHIP 42 SOUTH, RANGE 43 EAST
 CITY OF PALM BEACH GARDENS, PALM BEACH COUNTY, FLORIDA
 SHEET 5 OF 7 AUGUST, 2007

122



STATE OF FLORIDA
 COUNTY OF PALM BEACH
 This plat was filed for
 record at _____ M. this day
 of _____, 2007, and duly
 recorded in Plat Book No. _____
 on Pages _____ thru _____
 Sharon R. Beck
 Clerk and Comptroller
 By _____ D.C.



LINE	LENGTH	BEARING
L1	51.93	S30°57'34"W
L2	47.53	S41°41'17"W
L3	267.33	S88°33'08"E
L4	205.69	N01°26'52"E
L5	23.72	S16°44'29"E
L6	46.19	N07°26'52"E
L7	102.47	S34°06'41"W
L8	62.41	S85°34'08"W
L9	170.32	S01°26'52"W
L10	25.42	S88°33'08"E
L11	12.53	S14°06'25"E
L12	227.56	S72°42'28"W
L13	243.48	S85°24'03"W
L14	282.24	N38°59'15"E
L15	3.06	N50°29'21"W
L16	206.57	N38°54'53"E
L17	436.49	N74°26'15"E
L18	449.82	S72°54'11"W
L19	183.06	S38°54'53"W
L20	3.06	S50°29'21"E
L21	279.95	S39°59'15"W
L22	12.07	N01°26'52"E
L23	305.44	N74°40'09"E
L24	54.45	S88°33'08"E
L25	28.33	N52°48'41"E
L26	16.98	N37°13'19"W
L27	21.09	N52°48'41"E
L28	104.98	N45°43'35"E
L29	154.54	S39°28'11"W
L30	172.92	N35°15'16"E
L31	16.00	N54°44'44"W
L32	89.03	N35°15'16"E
L33	57.25	S12°08'47"E
L34	31.69	N55°23'42"W
L35	64.71	N35°15'16"E
L36	120.78	N78°09'10"E
L37	67.87	S88°33'08"E
L38	42.82	S14°06'25"E
L39	109.09	N75°54'33"E
L40	159.07	N71°45'05"E
L41	81.03	N33°53'47"E
L42	57.24	S88°03'41"E
L43	102.58	N84°05'37"E
L44	35.88	S39°28'11"W
L45	30.04	N59°01'03"E
L46	48.07	N43°34'33"E
L47	33.03	N31°45'09"E
L48	39.53	N25°02'10"E
L49	23.98	N18°01'00"E
L50	7.79	N42°23'38"E
L51	6.82	N42°23'38"E
L52	5.00	N47°39'22"W
L53	9.21	S88°03'00"W
L54	14.36	N79°07'27"E
L55	10.85	N61°01'52"E
L56	47.01	N59°37'04"E
L57	77.89	N58°39'23"E
L58	89.25	N34°35'14"E

CURVE	LENGTH	RADIUS	DELTA
C1	38.64	17.00	130°14'25"
C2	23.56	15.00	90°00'00"
C3	41.55	75.67	31°27'27"
C4	78.53	130.00	34°36'35"
C5	202.13	1062.82	10°41'44"
C6	92.83	32388.09	0°09'51"
C7	47.22	542.43	4°59'14"
C8	61.11	627.92	5°34'34"
C9	5.05	27.83	10°23'28"
C10	5.01	70.67	4°03'49"
C11	32.96	29.33	64°23'35"
C12	43.52	70.67	35°17'16"
C13	41.04	27.82	84°31'14"
C14	25.76	28.45	51°52'42"

LIDBERG LAND SURVEYING, Inc.
 675 West Indian Town Road, Suite 200,
 Jupiter, Florida 33458 TEL 561-746-8454

CAD K:\AUTOCAD2000\064243100-154-SEMBLER\DWG\00-154-306.DWG			
REF			
FLD	FB.	PG.	JOB 00-154 (306A)
OFF	J.K.O.		DATE 05/21/2007
CKD	D.C.L.	SHEET 5 OF 7	DWG 000-154P