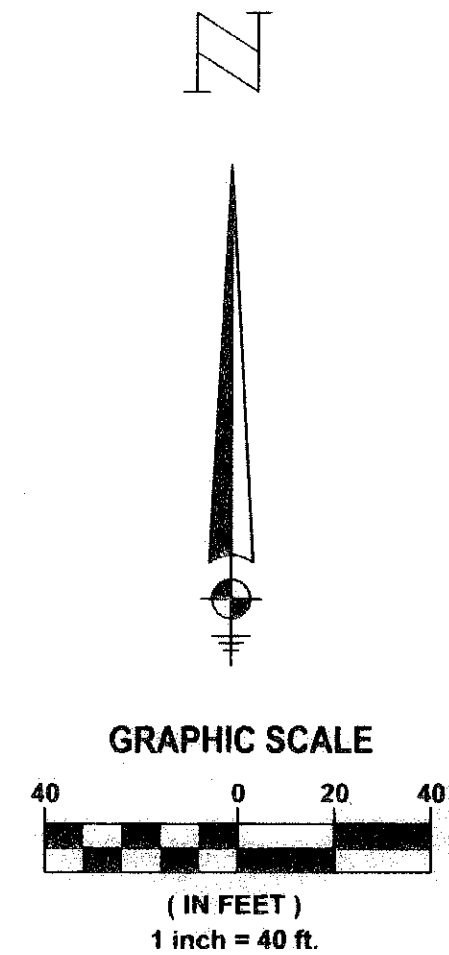
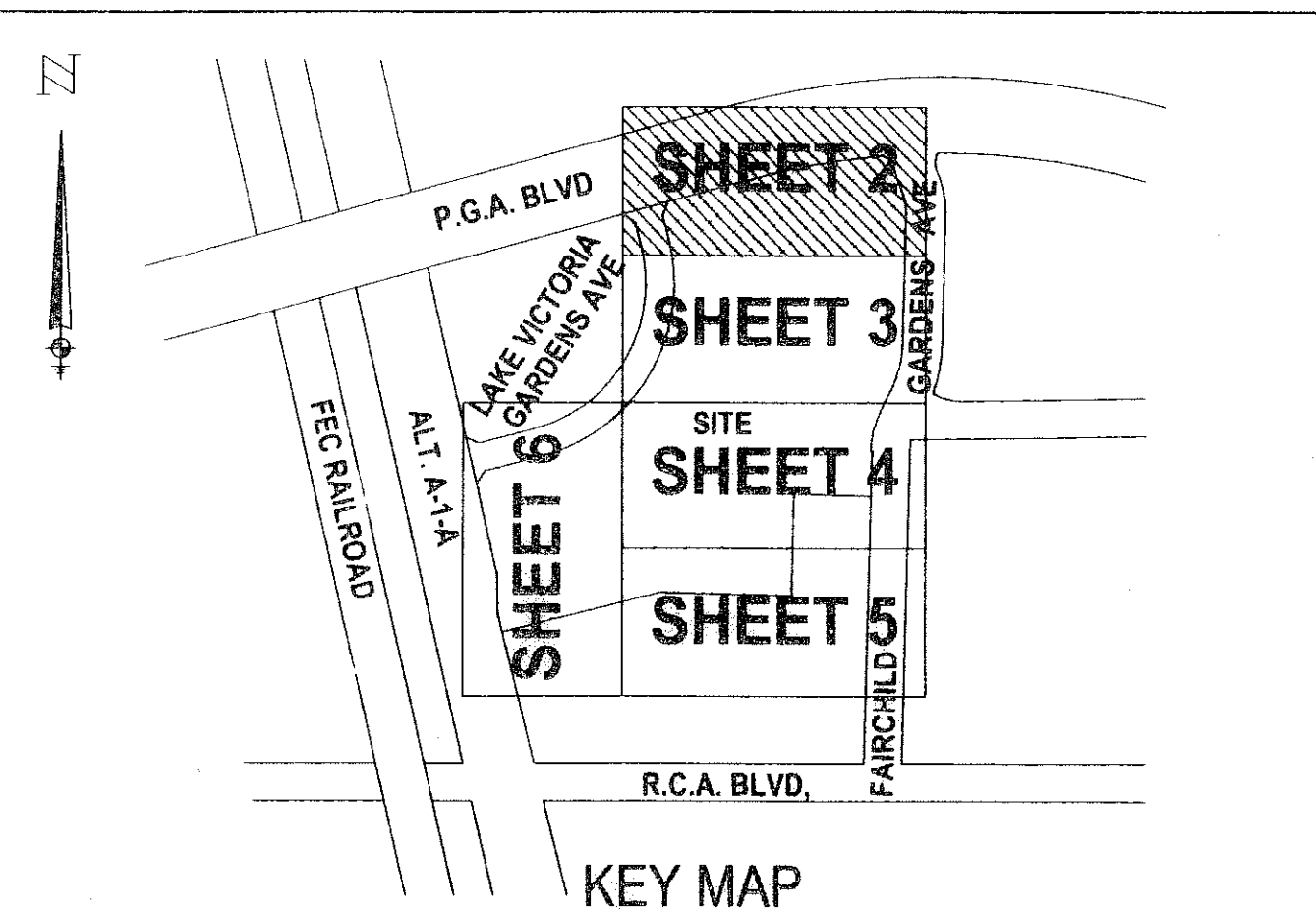


LEGACY PLACE COMMERCIAL REPLAT

BEING A REPLAT OF TRACT "A" AND WATER MANAGEMENT TRACTS "L-1" THROUGH "L-4", LEGACY PLACE COMMERCIAL,
 AS RECORDED IN PLAT BOOK 108, PAGES 29 THROUGH 36, PUBLIC RECORDS OF PALM BEACH COUNTY, FLORIDA
 LYING IN SECTION 6, TOWNSHIP 42 SOUTH, RANGE 43 EAST
 CITY OF PALM BEACH GARDENS, PALM BEACH COUNTY, FLORIDA
 SHEET 2 OF 7 AUGUST, 2007

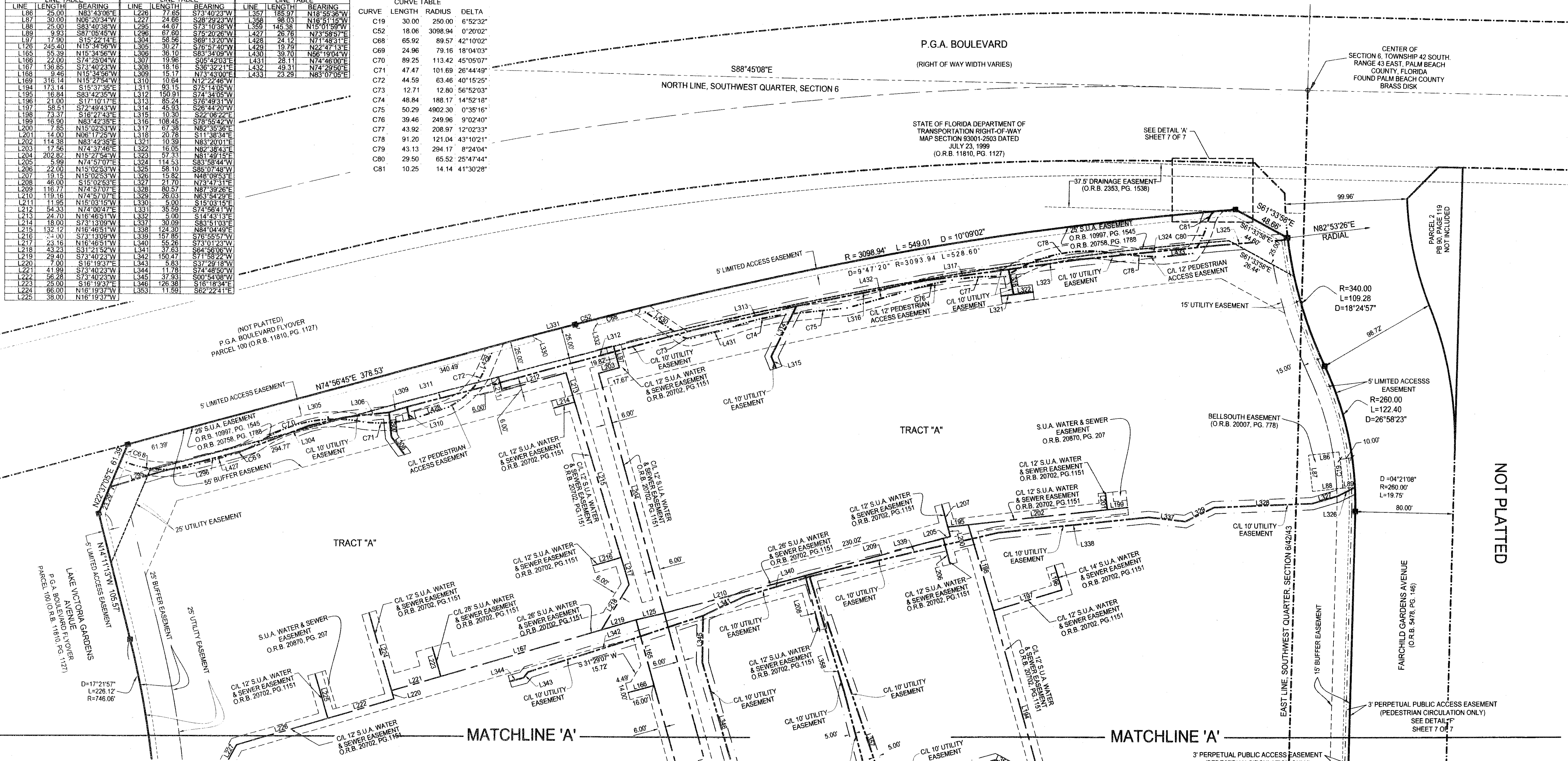
119



STATE OF FLORIDA
 COUNTY OF PALM BEACH
 This plat was filed for
 record at _____ M. this day
 of _____, 2007 and duly
 recorded in Plat Book No. _____
 on Pages _____ thru _____
 Sharon R. Beck
 Clerk and Comptroller
 By _____ D.C.

LINE TABLE				LINE TABLE				LINE TABLE			
LINE	LENGTH	BEARING	LINE	LENGTH	BEARING	LINE	LENGTH	BEARING	LINE	LENGTH	BEARING
L86	25.00	N83°43'06"E	L226	77.65	S73°40'23"W	L357	185.97	N18°55'36"W			
L87	30.00	N06°20'34"W	L227	24.66	S28°29'23"W	L358	98.03	N16°51'15"W			
L88	25.00	S83°40'38"W	L228	44.67	S73°10'38"W	L359	145.38	N75°01'59"W			
L89	49.82	S81°05'49"W	L229	67.80	S75°20'26"W	L360	29.78	N73°58'51"E			
L90	17.90	S15°22'14"E	L304	58.56	S69°13'20"W	L428	24.12	N71°48'31"E			
L126	245.40	N15°34'56"W	L305	30.27	S75°57'40"W	L429	19.79	N22°47'13"E			
L155	55.39	N15°34'56"W	L306	36.10	S63°24'09"W	L430	39.70	N56°19'04"W			
L166	22.00	S74°25'04"W	L307	19.96	S05°42'03"E	L431	28.11	N74°46'00"E			
L167	136.85	S73°40'23"W	L308	18.16	S36°32'21"E	L432	49.31	N74°29'50"E			
L168	9.46	N15°34'56"W	L309	15.17	N73°43'00"E	L433	23.29	N83°07'05"E			
L169	316.14	N15°27'54"W	L310	10.84	N12°22'45"W						
L194	173.14	S15°37'35"E	L311	93.15	S75°14'05"W						
L195	16.84	S83°42'35"W	L312	150.91	S74°34'05"W						
L196	21.00	S17°10'17"E	L313	85.24	S78°49'31"W						
L197	58.51	S72°49'43"W	L314	45.93	S28°44'20"W						
L198	73.37	S16°27'43"E	L315	10.30	S22°06'22"E						
L199	16.90	N63°42'35"E	L316	108.45	S78°55'42"W						
L200	1.85	N15°02'53"W	L317	67.49	N82°35'36"E						
L201	14.00	N08°17'25"W	L318	20.78	S11°38'34"E						
L202	114.38	N83°42'35"E	L321	10.39	N83°20'01"E						
L203	17.56	N74°37'46"E	L322	16.05	N82°38'43"E						
L204	202.82	N15°27'54"W	L323	57.33	N81°49'15"E						
L205	5.99	N74°57'07"E	L324	114.53	S73°40'23"W						
L206	22.00	N15°02'53"W	L325	58.10	S85°07'48"W						
L207	19.15	N15°02'53"W	L326	15.82	N48°09'55"E						
L208	46.00	S15°02'53"E	L327	21.70	N73°47'31"E						
L209	116.77	N74°57'07"E	L328	80.57	N87°36'26"E						
L210	119.16	N74°57'07"E	L329	26.03	N63°54'29"E						
L211	11.95	N15°03'15"W	L330	5.00	S15°03'15"E						
L212	54.33	N74°00'47"E	L331	35.59	S74°58'41"W						
L213	24.70	N16°46'51"W	L332	5.00	S14°43'13"E						
L214	18.00	S73°13'09"W	L333	30.09	S83°51'03"E						
L215	132.12	N16°46'51"W	L338	124.30	N84°04'49"E						
L216	24.00	S73°13'09"W	L339	157.95	S73°13'09"W						
L217	23.16	N16°46'51"W	L340	55.26	S73°01'23"W						
L218	43.23	S31°21'52"W	L341	37.63	S64°36'06"W						
L219	29.40	S73°40'23"W	L342	150.47	S73°55'22"W						
L220	7.00	S15°18'17"E	L343	5.83	S37°29'18"W						
L221	41.99	S73°40'23"W	L344	11.78	S74°48'50"W						
L222	56.28	S73°40'23"W	L345	37.93	S00°54'08"W						
L223	25.00	S16°18'37"E	L346	126.38	S16°18'34"E						
L224	65.00	N16°19'37"W	L353	11.59	S62°22'41"E						
L225	38.00	N16°19'37"W									

CURVE TABLE			
CURVE	LENGTH	RADIUS	DELTA
C19	30.00	250.00	6°52'32"
C52	18.06	3098.94	0°20'02"
C68	65.92	89.57	42°10'02"
C69	24.96	79.16	18°04'03"
C70	89.25	113.42	45°05'07"
C71	47.47	101.69	26°44'49"
C72	44.59	63.48	40°15'25"
C73	12.71	12.80	56°52'03"
C74	48.84	188.17	14°52'18"
C75	50.29	4902.30	0°35'16"
C76	39.46	249.96	9°02'40"
C77	43.92	208.97	12°02'33"
C78	91.20	121.04	43°10'21"
C79	43.13	294.17	8°24'04"
C80	29.50	65.52	25°47'44"
C81	10.25	14.14	41°30'28"



775 West Indian Town Road, Suite 200,
 Jupiter, Florida 33458 TEL 561-746-8454

CAD	K:\AUTOCAD2000\06424300-154-SEMBLER\dwg\00-154-306.DWG		
REF			
FLD		FB	PC
OFF	J.K.O.		JOB 00-154 (306A)
CKD	D.C.L.	SHEET 2 OF 7	DATE 05/21/2007
			DWG 000-154P