

SEMINOLE RIDGE

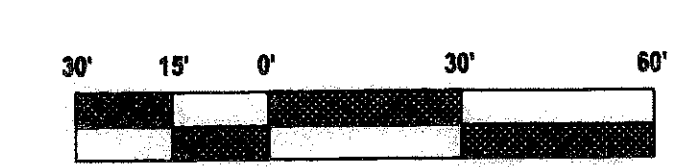
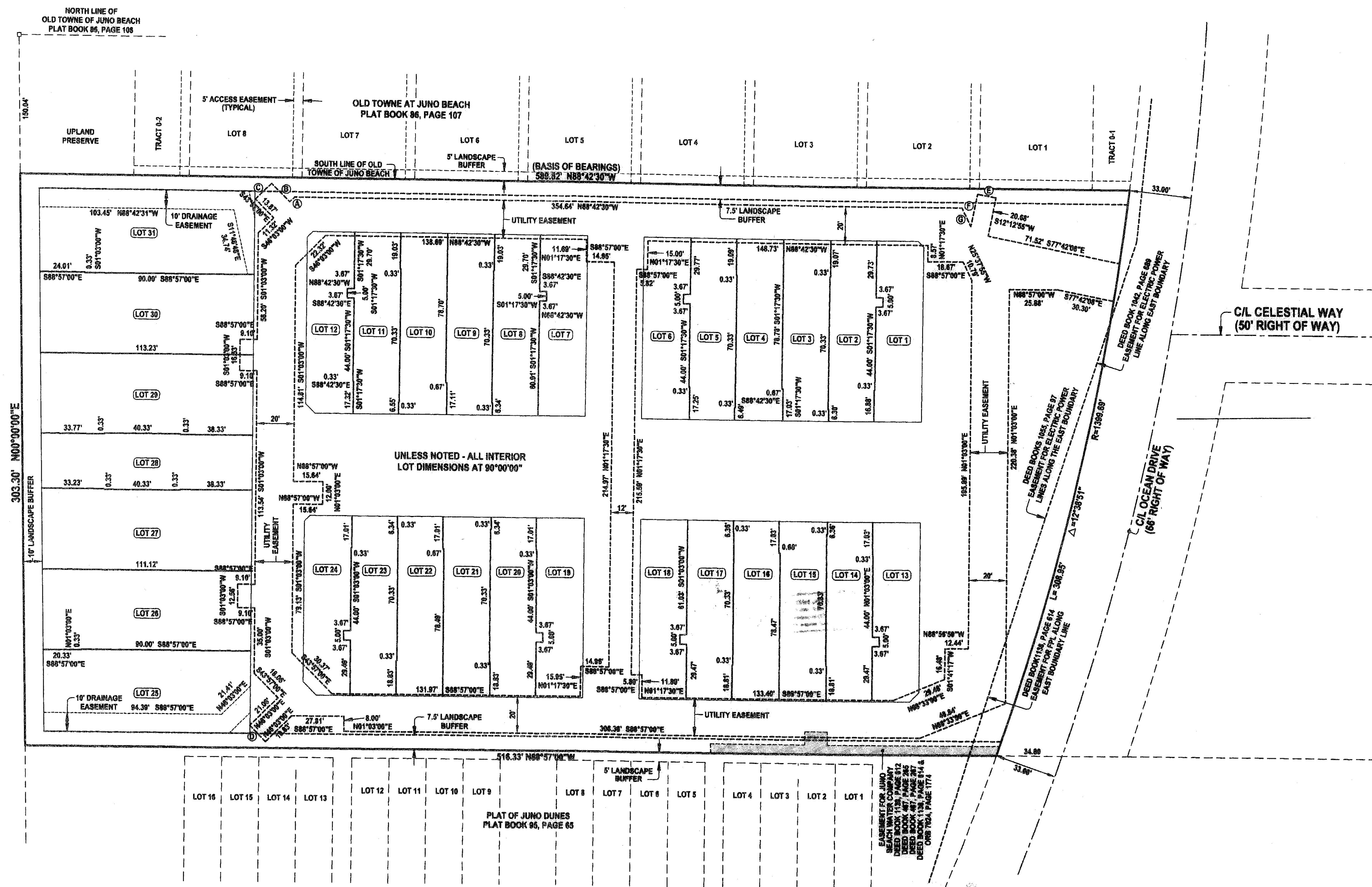
BEING A REPLAT OF LOT 37, JUNO BEACH RECORDED IN PLAT BOOK 22, PAGE 49, PUBLIC RECORDS OF PALM BEACH COUNTY, FLORIDA, LYING IN SECTION 28, TOWNSHIP 41 SOUTH, RANGE 43 EAST, TOWN OF JUNO BEACH, PALM BEACH COUNTY, FLORIDA

MARCH, 2007

SHEET 3 OF 3

102

STATE OF FLORIDA
COUNTY OF PALM BEACH
THIS PLAT WAS FILED FOR RECORD AT _____
THIS DAY OF _____, 2007
AND DULY RECORDED IN PLAT BOOK NO. _____
ON PAGES _____
CLERK OF THE CIRCUIT COURT
BY _____
DEPUTY CLERK




SCALE IN FEET
1" = 30'

TABULAR DATA

(A)	3.67'
(B)	S46°03'00"W
(C)	13.73'
(D)	S43°57'00"E
(E)	12.00'
(F)	N46°41'45"E
(G)	12.00'
(H)	N43°18'15"W
(I)	10.00'
(J)	S77°42'08"E
(K)	17.51'
(L)	S12°12'55"W
(M)	10.96'
(N)	N25°37'55"W

THIS INSTRUMENT WAS PREPARED BY DONALD D. DANIELS IN THE OFFICES OF DONALD D. DANIELS, INC.

 <p>DONALD D. DANIELS, INC. Consulting Surveyors & Mappers</p>	SEMINOLE RIDGE		<p>Florida Certificate LB No. 4185 725 North A-1-A, Suite C-111 Jupiter, Florida 33477 Tel: (561) 747-8884</p>
	<p>REFERENCE: 2249</p>	<p>REVISIONS:</p>	