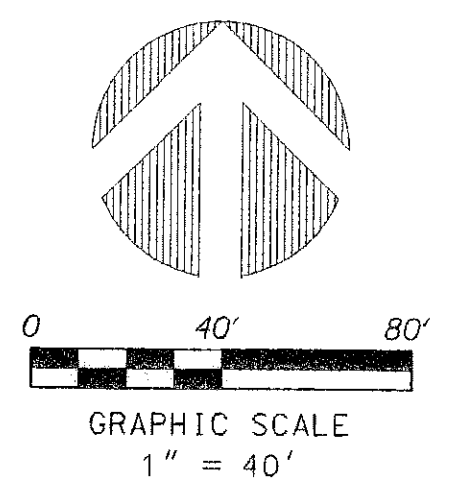


04176
PERIMETER
 SURVEYING & MAPPING
 Certificate of Authorization No. LB7264
 Prepared by: Jeff S. Hodapp, P.S.M.
 951 Broken Sound Parkway, Suite 320
 Boca Raton, Florida 33487
 Tel: (561) 241-9988
 Fax: (561) 241-5182

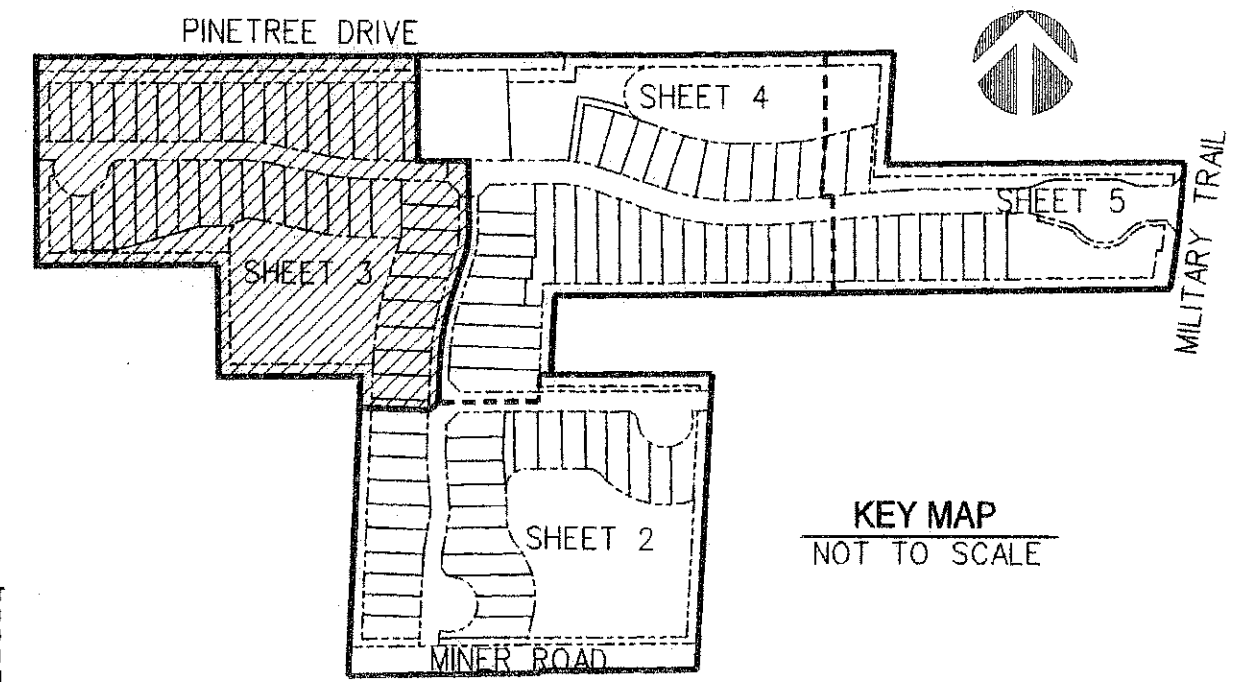
CAPISTARA P.U.D.

A REPLAT OF A PORTION OF THE SOUTHWEST ONE-QUARTER (INCLUDING PORTIONS OF TRACTS 9, 10 AND 11) OF "AMENDED PLAT OF SEC. 12 TWP. 45 S., R. 42 E., MARY A. LYMAN ET AL", (P.B. 9, PG. 74, P.B.C.R.), PALM BEACH COUNTY, FLORIDA.
 JUNE, 2007

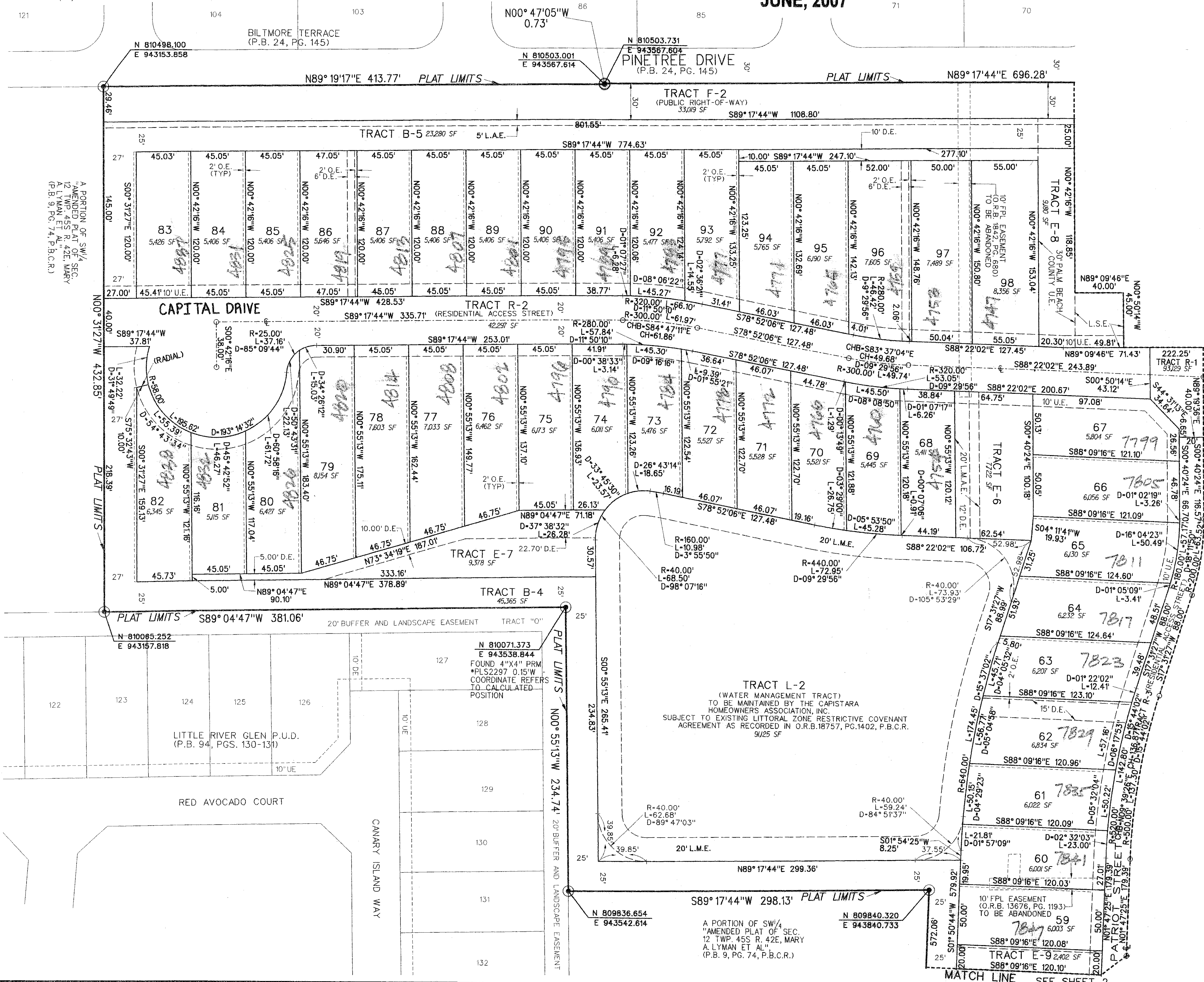
97



SHEET 3 OF 5



KEY MAP
 NOT TO SCALE



- LEGEND:**
- SET P.R.M. (UNLESS OTHERWISE NOTED) 4" x 4" CONC. MON. WITH ALUMINUM DISK STAMPED P.R.M. #LB7264
 - P.C.P.
 - ⊕ CENTERLINE
- ABBREVIATIONS:**
- CH CHORD
 - CHB CHORD BEARING
 - CONC. CONCRETE
 - COR. CORNER
 - DELTA (CENTRAL ANGLE)
 - D.E. DRAINAGE EASEMENT
 - L.B. LENGTH
 - L.B.S. LICENSED BUSINESS
 - L.E. LANDSCAPE EASEMENT
 - L.M.E. LAKE MAINTENANCE EASEMENT
 - L.M.A.E. LICENSED ACCESS EASEMENT
 - L.S. LICENSED SURVEYOR
 - L.W.D.D. LAKE WORTH DRAINAGE DISTRICT
 - MON. MONUMENT
 - O.E. OVERHANG EASEMENT
 - O.R.B. OFFICIAL RECORDS BOOK
 - N.R. NON-RADIAL
 - P.B. PLAT BOOK
 - P.B.C.R. PALM BEACH COUNTY RECORDS
 - P.C. PAGE
 - P.C.P. PERMANENT CONTROL POINT
 - P.O.B. POINT OF BEGINNING
 - P.O.C. POINT OF COMMENCEMENT
 - P.R.M. PERMANENT REFERENCE MONUMENT
 - P.S.M. PROFESSIONAL SURVEYOR & MAPPER
 - P.U.D. PLANNED UNIT DEVELOPMENT
 - RADIUS
 - R/O.W. RIGHT-OF-WAY
 - SEC. SECTION
 - S.F. SQUARE FEET
 - U.E. UTILITY EASEMENT
 - L.S.E. LIFT STATION EASEMENT

SUBDIVISION: CAPISTARA
 BOOK: 10
 PAGE: 97
 BLOCK: 208
 LOT: 60
 ZONING: R-10
 SE: 1/4
 T&S: 420
 FOR NAME

SEE SHEET 4
 MATCH LINE

MATCH LINE SEE SHEET 2