

MATCHLINE SEE SHEET 11 OF 12

MATCHLINE SEE SHEET 11 OF 12

WATER MANAGEMENT TRACT No. 5

SEE SHEET 9 OF 12 MATCHLINE

MATCHLINE SEE SHEET 3 OF 12

MATCHLINE SEE SHEET 9 OF 12

SEE SHEET 3 OF 12 MATCHLINE

MATCHLINE SEE SHEET 3 OF 12

MATCHLINE SEE SHEET 4 OF 12

SEE SHEET 6 OF 12 MATCHLINE

MATCHLINE SEE SHEET 5 OF 12

SEE SHEET 5 OF 12 MATCHLINE

CORTILE STREET

WATER MANAGEMENT TRACT No. 5

WATER MANAGEMENT TRACT No. 5

WATER MANAGEMENT TRACT No. 2

WATER MANAGEMENT TRACT No. 2

GRAPHIC SCALE

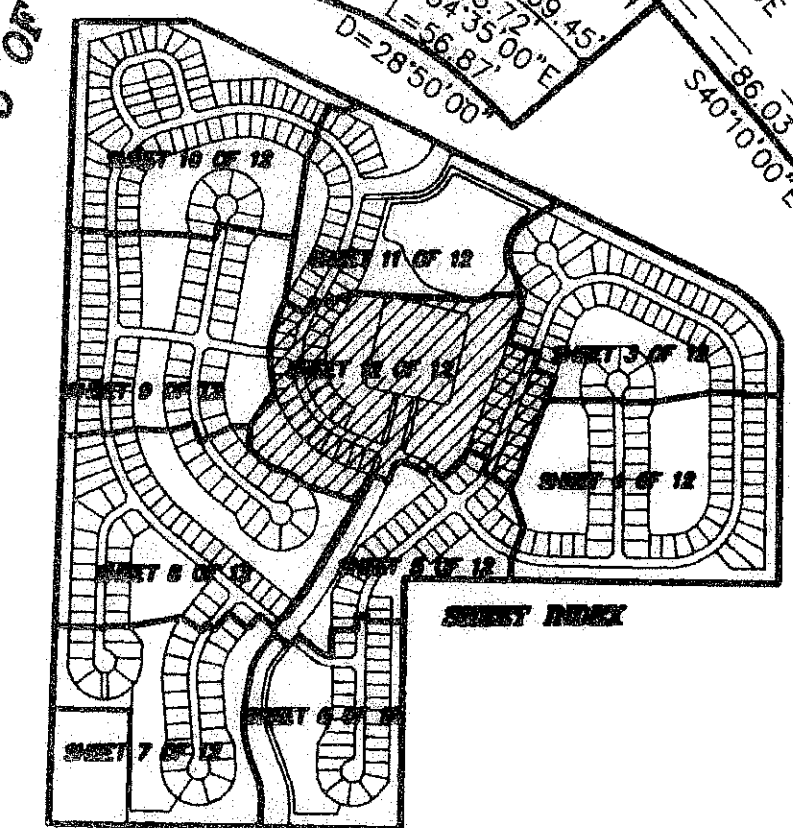
(IN FEET)
1 inch = 50 ft.

PORTOSOL

IN SECTIONS 13 AND 24, TOWNSHIP 43 SOUTH, RANGE 41 EAST,
VILLAGE OF ROYAL PALM BEACH, PALM BEACH COUNTY, FLORIDA
MAY 2007
SHEET 12 OF 12

MATCHLINE SEE SHEET 8 OF 12

SEE SHEET 5 OF 12 MATCHLINE



- LEGEND:**
- Δ = DELTA (CENTRAL ANGLE)
 - L = LENGTH
 - R = RADIUS
 - CB = CHORD BEARING
 - CD = CHORD DISTANCE
 - PSW = PROFESSIONAL SURVEYOR AND MAPPER
 - PLS = PROFESSIONAL LAND SURVEYOR
 - LAE = LIMITED ACCESS EASEMENT
 - MREE = MAINTENANCE ROOF AND EAVES EASEMENT
 - UE = UTILITY EASEMENT
 - DE = DRAINAGE EASEMENT
 - OS = OPEN SPACE
 - WMT = WATER MANAGEMENT TRACT
 - (R) = RADIAL
 - (NR) = NON-RADIAL
 - ORB = OFFICIAL RECORD BOOK
 - P.B.C.U.E. = PALM BEACH COUNTY UTILITY EASEMENT
 - = PERMANENT REFERENCE MONUMENT "LB 4318" (UNLESS OTHERWISE NOTED)
 - = PERMANENT CONTROL POINT "LB 4318"

PORTOSOL

NMI

NICK MILLER, INC.
2560 RCA BLVD., STE 105, PALM BEACH GARDENS, FL 33410
TEL: 561.627.5200 FAX: 561.627.0983 www.nickmillerinc.com
D.B.P.R. BUSINESS LICENSE No. 4318

| | |
|-----------|--------------------|
| SHEET NO. | SCALE: 1" = 50' |
| 12 OF 12 | DATE: MAY 2007 |
| | JOB NO. 1038.004 |
| | FILE: 1038.004.DWG |