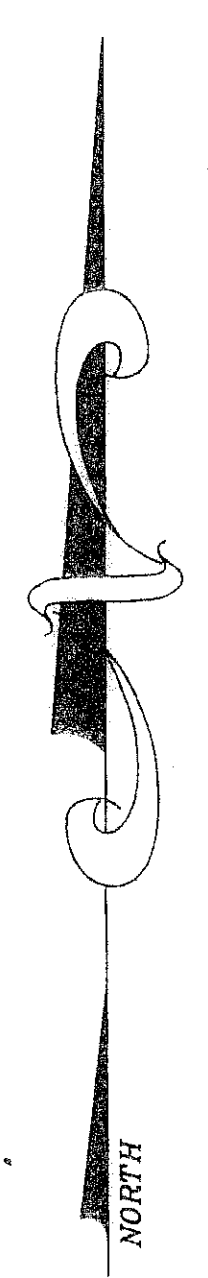
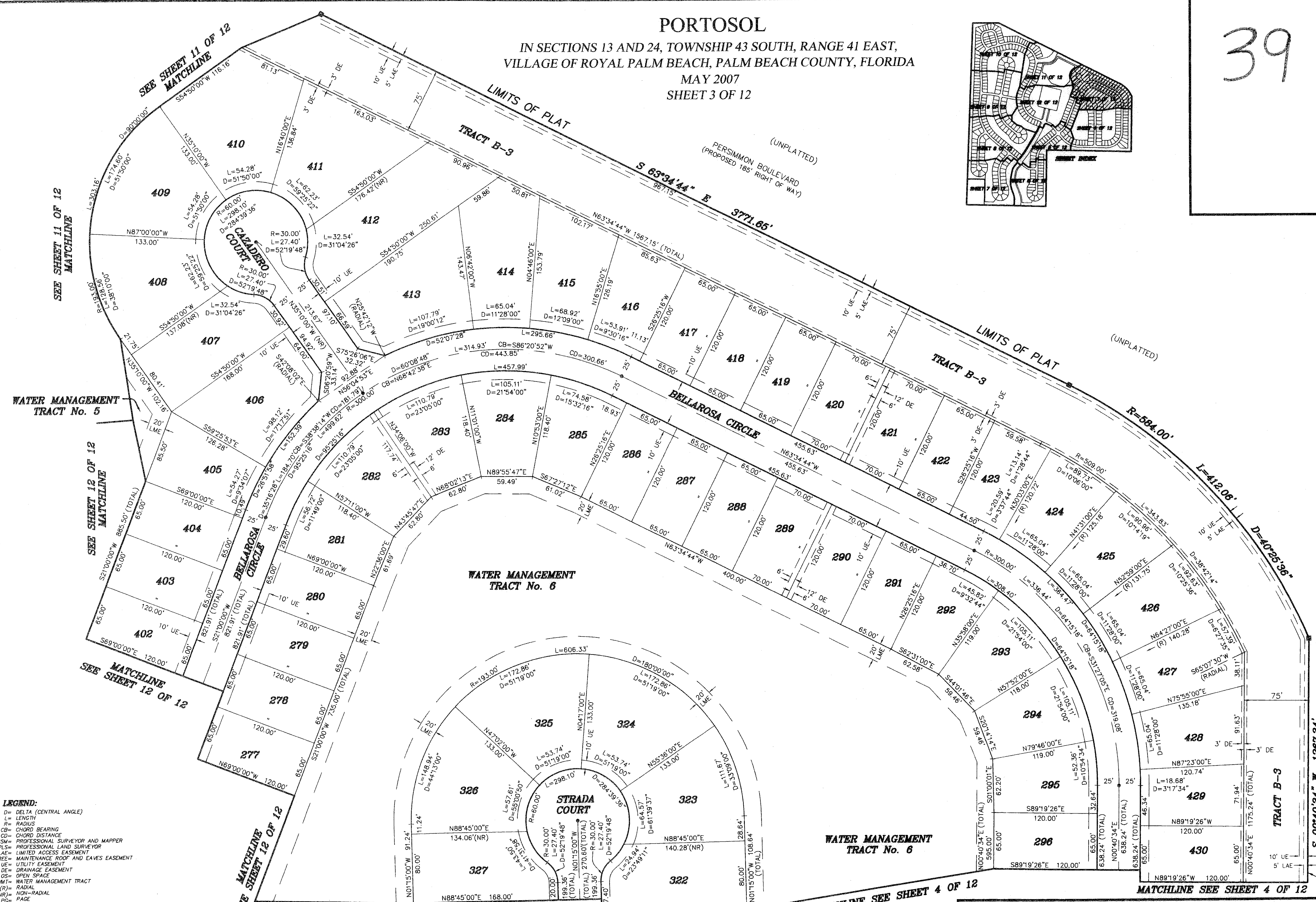
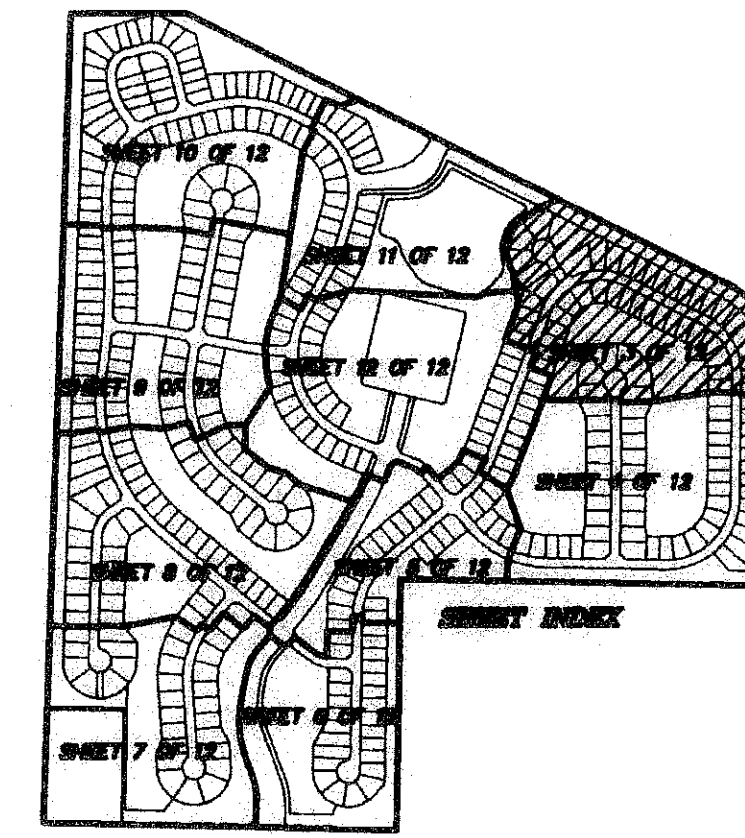


39

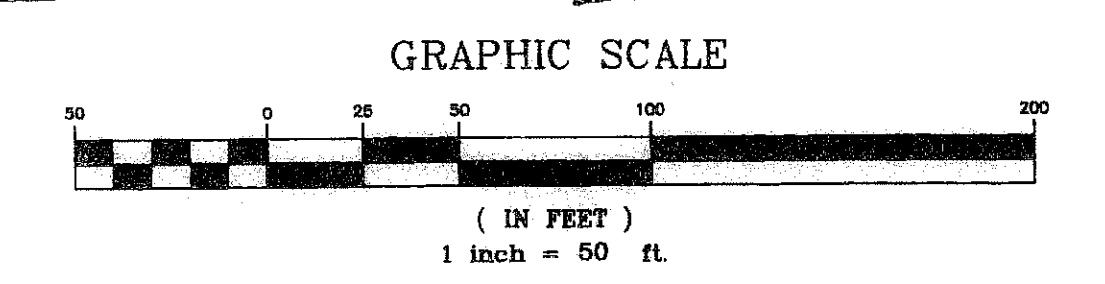
PORTOSOL

IN SECTIONS 13 AND 24, TOWNSHIP 43 SOUTH, RANGE 41 EAST,
VILLAGE OF ROYAL PALM BEACH, PALM BEACH COUNTY, FLORIDA

MAY 2007
SHEET 3 OF 12



- LEGEND:**
- D= DELTA (CENTRAL ANGLE)
 - L= LENGTH
 - R= RADIUS
 - CB= CHORD BEARING
 - CD= CHORD DISTANCE
 - PSM= PROFESSIONAL SURVEYOR AND MAPPER
 - PLS= PROFESSIONAL LAND SURVEYOR
 - LAE= LIMITED ACCESS EASEMENT
 - MRE= MAINTENANCE ROOF AND EAVES EASEMENT
 - UE= UTILITY EASEMENT
 - DE= DRAINAGE EASEMENT
 - OS= OPEN SPACE
 - WMT= WATER MANAGEMENT TRACT
 - (R)= RADIAL
 - (NR)= NON-RADIAL
 - PG= PAGE
 - OR= OFFICIAL RECORD BOOK
 - P.B.C.U.E.= PALM BEACH COUNTY UTILITY EASEMENT
 - PR= PERMANENT REFERENCE MONUMENT "LB 4318"
 - (UNLESS OTHERWISE NOTED)
 - = PERMANENT CONTROL POINT "LB 4318"



PORTOSOL	
SHEET NO.	SCALE: 1" = 50'
3 OF 12	DATE: MAY 2007
	JOB NO.: 1038.004
	FILE: 1038.004.DWG

WEST RIGHT OF WAY LINE STATE ROAD 7 (PER DEED BOOK 992, PAGE 123) (RIGHT OF WAY WIDTH VARIES)