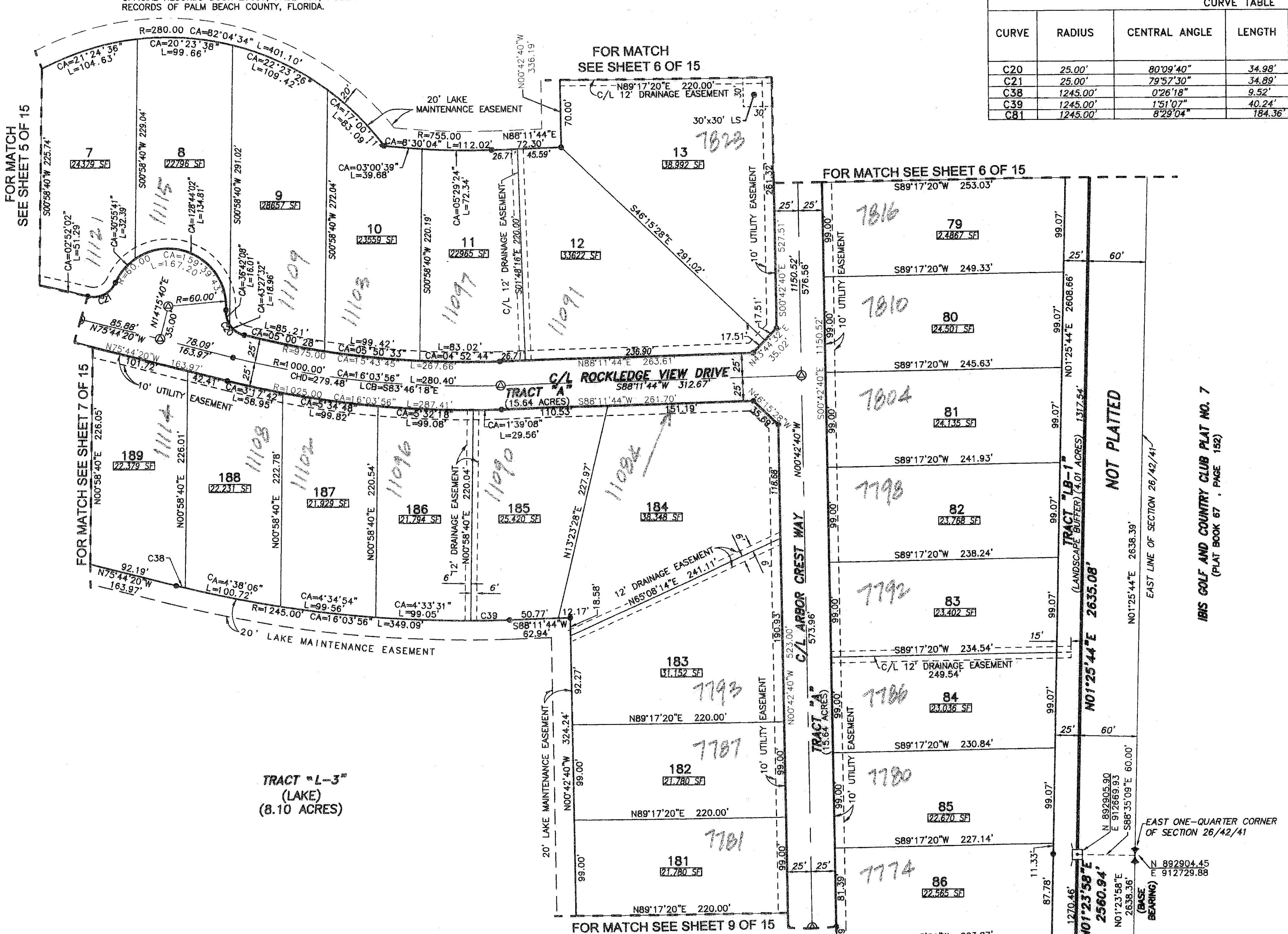


23

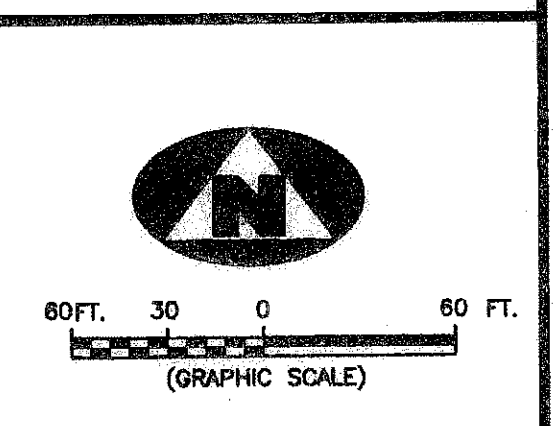
TRACT L-2\* (LAKE) (23.30 ACRES)

TRACT "L-2" IS SUBJECT TO EXISTING LITORAL ZONE RESTRICTIVE COVENANT AGREEMENT AS RECORDED IN OFFICIAL RECORDS BOOK 20680, PAGE 689, PUBLIC RECORDS OF PALM BEACH COUNTY, FLORIDA.

BEING A REPLAT OF TRACT "ER", BAYHILL CLUBHOUSE AND MAINTENANCE AREA, RECORDED IN PLAT BOOK 109, PAGE 158, PUBLIC RECORDS, PALM BEACH COUNTY AND LYING AND BEING IN SECTION 28, TOWNSHIP 42 SOUTH, RANGE 41 EAST, PALM BEACH COUNTY, FLORIDA. A PORTION OF



CURVE TABLE with columns: CURVE, RADIUS, CENTRAL ANGLE, LENGTH, CHORD DISTANCE, CHORD BEARING. Includes curves C20, C21, C38, C39, C81.



FOR MATCH SEE SHEET 5 OF 15

FOR MATCH SEE SHEET 6 OF 15

FOR MATCH SEE SHEET 6 OF 15

FOR MATCH SEE SHEET 9 OF 15

FOR MATCH SEE SHEET 9 OF 15

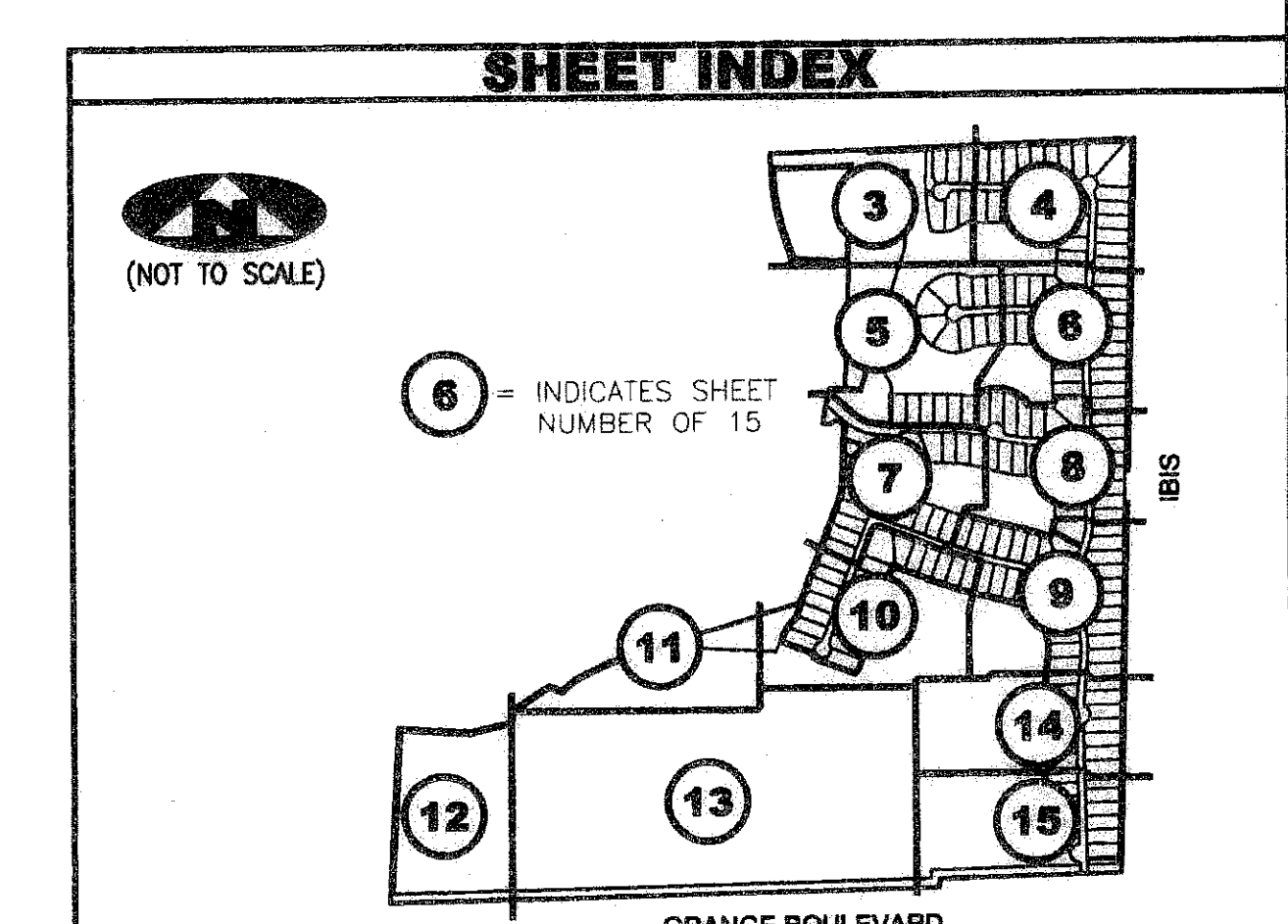
NOT PLATTED IRLS GOLF AND COUNTRY CLUB PLAT NO. 7 (PLAT BOOK 67 - PAGE 192)

Vertical text on the left margin: SUBDIVISION BAYHILL EST., PLAT BOOK 110, FLOOD ZONE 15, ZONING P.E., TRACT 59, L.S., AND R.W. STATEMENT, ETC.

SURVEYOR'S NOTES: 1. THE BASE BEARING, AS SHOWN HEREON, IS N01°23'58"E ALONG THE EAST LINE OF SECTION 26/42/41. 2. IN THOSE INSTANCES WHERE UTILITY OR DRAINAGE STRUCTURES ARE CONSTRUCTED IN CONFLICT WITH THE PLATTED PERMANENT CONTROL POINT POSITION STRADDLERS MONUMENTED AS PERMANENT CONTROL POINTS WILL BE SET TO REFERENCE THE PLATTED POSITION. 3. LINES THAT INTERSECT CURVES ARE NOT RADIAL UNLESS OTHERWISE NOTED. 4. THIS INSTRUMENT WAS PREPARED BY WM. R. VAN CAMPEN, P.S.M. NO. 2424, IN AND FOR THE OFFICES OF ASSOCIATED LAND SURVEYOR'S, INC., 4152 WEST BLUE HERON BOULEVARD, SUITE 121, RIVIERA BEACH, FLORIDA, 33407. 5. THE COORDINATES SHOWN HEREON ARE STATE PLANE GRID COORDINATES ACCORDING TO THE TRANSVERSE MERCATOR PROJECTION OF THE FLORIDA EAST ZONE, N.A.D. 1983, PER THE 1990 ADJUSTMENT. 6. THE GROUND DISTANCE TO GRID DISTANCE SCALE FACTOR IS 1.000015 (GROUND DISTANCE X SCALE FACTOR = GRID DISTANCE) 7. THE LINEAR DIMENSIONS SHOWN HEREON ARE GROUND DISTANCES IN U.S. FEET AND DECIMAL PARTS THEREOF. 8. THE BEARINGS SHOWN HEREON ARE BASED ON STATE PLANE GRID AZIMUTHS.

LEGEND table with symbols and definitions for radial lines, centerlines, drainage easements, water line easements, lift station easements, page, buffer easement, radius distance, arc length distance, central angle, long chord bearing, chord distance, official records book, rights-of-way buffer easement, found permanent reference monument, set permanent reference monument, found permanent control point, set permanent control point, northing and easting coordinate.

FILE: P87PLAT, FB: , WO.NO.: P87, SCALE: 1"=60', DATE: 2/01/05, DWN: EB, SHEET 8 OF 15



RECORD PLAT OF BAYHILL ESTATES PUD ASSOCIATED LAND SURVEYORS, INC. 4152 W. BLUE HERON BOULEVARD-SUITE 121, RIVIERA BEACH, FLORIDA 33404. LB NO. 7344. PHONE: (561) 848-2102 FAX: (561) 844-9659 EMAIL: ALSURVEY@AOL.COM