

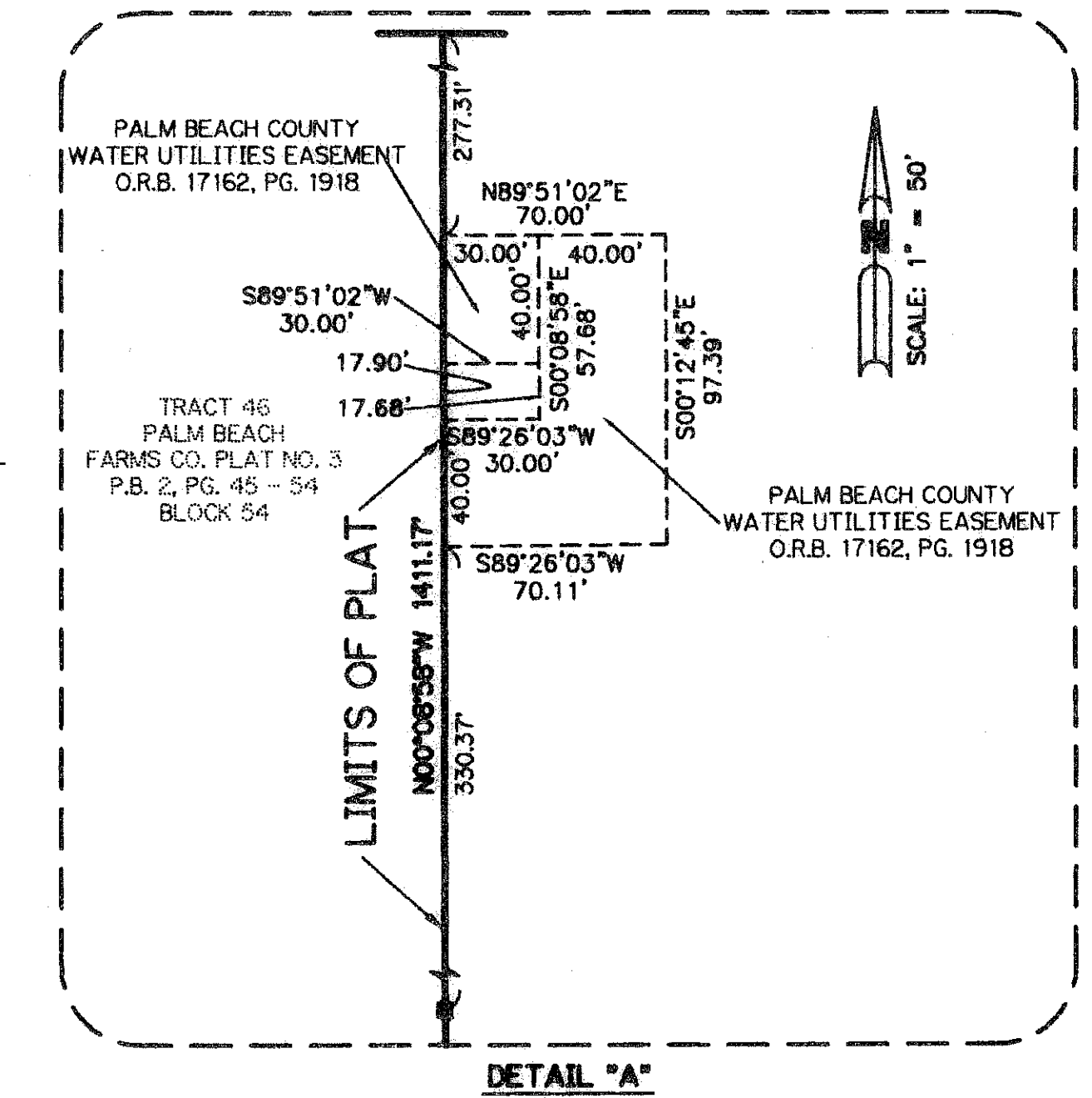
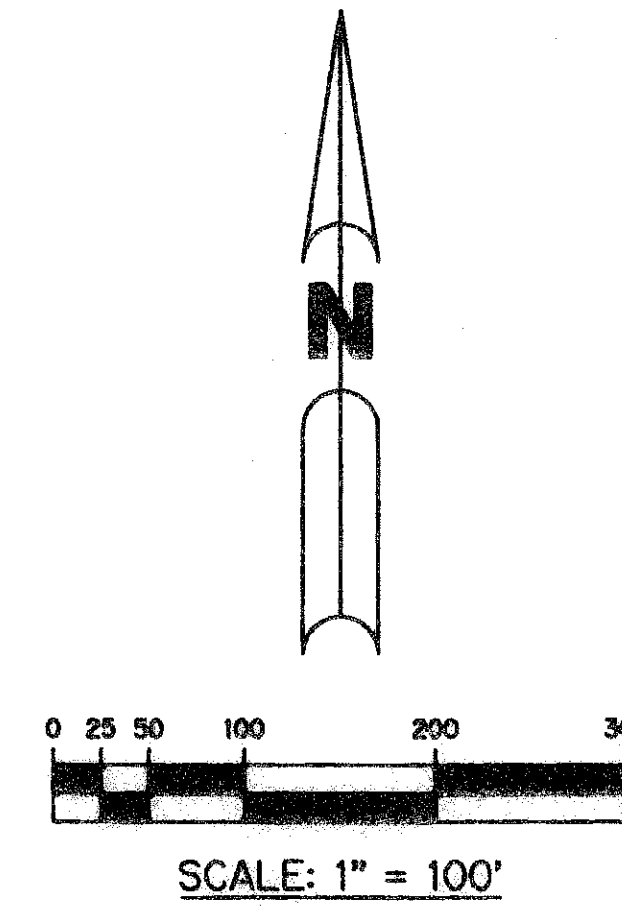
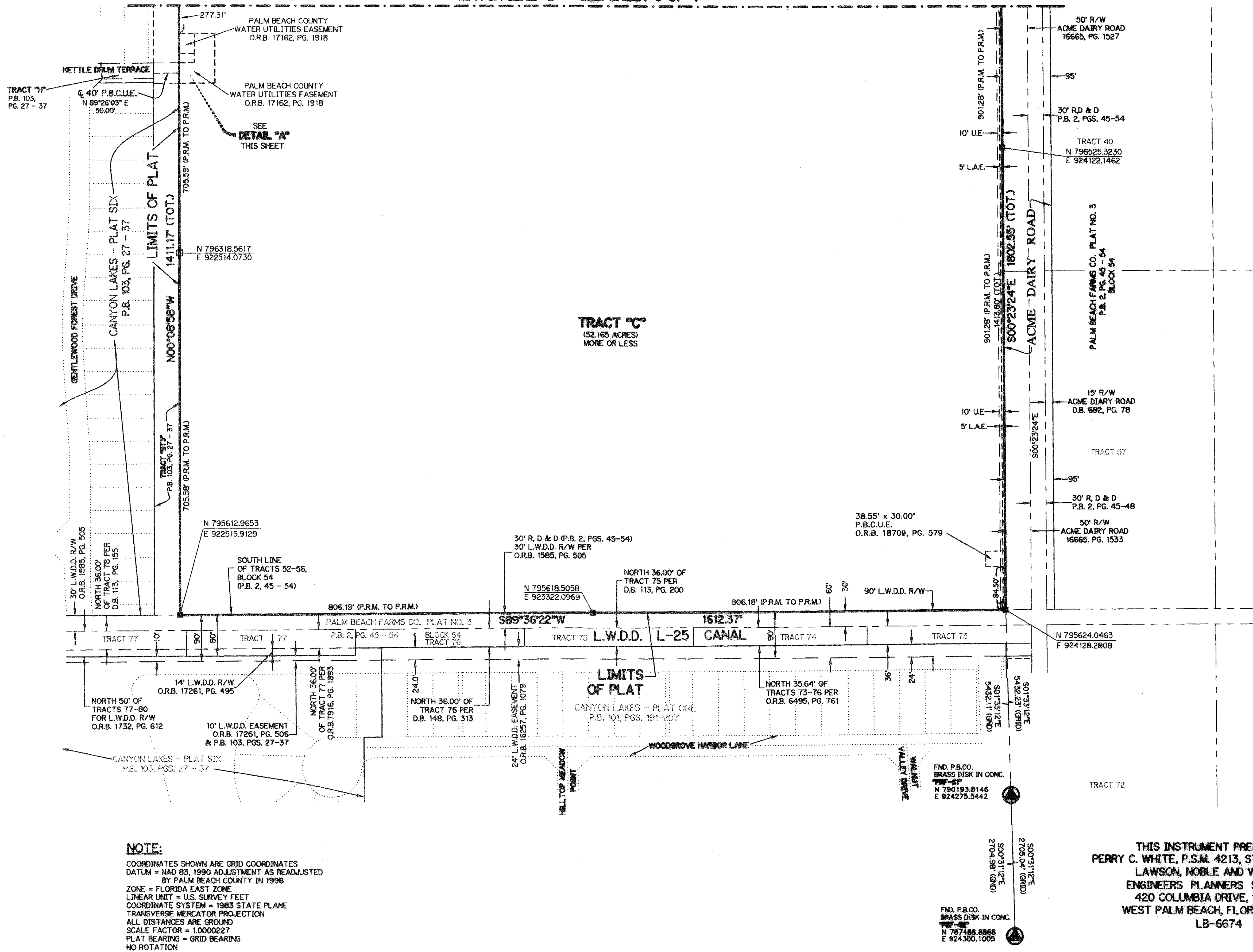
BOYNTON - LYONS

BEING A REPLAT OF A PORTION OF TRACTS 9 THROUGH 19, 24, 41, 46, 51 AND 56 AND ALL OF TRACTS 20 THROUGH 23, 42 THROUGH 45 AND 52 THROUGH 55 AND A PORTION OF THE ROAD, DYKE AND DITCH RESERVATIONS, 30 FEET IN WIDTH, ABUTTING SAID TRACTS, BLOCK 54, PALM BEACH FARMS CO. PLAT NO. 3, AS RECORDED IN PLAT BOOK 2, PAGE 45, PUBLIC RECORDS, PALM BEACH COUNTY, FLORIDA ALL LYING WITHIN SECTIONS 29 AND 30, TOWNSHIP 45 SOUTH, RANGE 42 EAST, PALM BEACH COUNTY, FLORIDA

SHEET 4 OF 4

OCTOBER, 2006

MATCH LINE "B" - SEE SHEET 3 OF 4



- LEGEND:**
- - FIND CONCRETE MONUMENT
 - - SET PERMANENT REFERENCE MONUMENT, L.B. #6674
 - - SET PERMANENT CONTROL POINT, L.B. #6674
 - D.B. - DEED BOOK
 - L.W.D.D. - LAKE WORTH DRAINAGE DISTRICT
 - N.T.S. - NOT TO SCALE
 - O.R.B. - OFFICIAL RECORD BOOK
 - R.D.&D. - ROAD, DYKE AND DITCH RESERVATION
 - ESMT - EASEMENT
 - P.B. - PLAT BOOK
 - PGS. - PAGES
 - P.S.M. - PROFESSIONAL SURVEYOR AND MAPPER
 - R/W - RIGHT-OF-WAY
 - S.T. - SURVEY TIE
 - (TOT.) - TOTAL
 - U.E. - UTILITY EASEMENT
 - P.O.B. - POINT OF BEGINNING
 - P.O.C. - POINT OF COMMENCEMENT
 - L.A.E. - LIMITED ACCESS EASEMENT
 - N 737648.0171 - DENOTES STATE PLANE COORDINATES
 - E 905258.2326

SECTION BOYNTON - LYONS
 BOOK 110 PAGE 08
 FLOOD MAP # 185A
 ZONING TAG
 QUAD 50
 SE
 TAG 749
 PUB. NAME

NOTE:
 COORDINATES SHOWN ARE GRID COORDINATES
 DATUM = NAD 83, 1990 ADJUSTMENT AS READJUSTED
 BY PALM BEACH COUNTY IN 1998
 ZONE = FLORIDA EAST ZONE
 LINEAR UNIT = U.S. SURVEY FEET
 COORDINATE SYSTEM = 1983 STATE PLANE
 TRANSVERSE MERCATOR PROJECTION
 ALL DISTANCES ARE GROUND
 SCALE FACTOR = 1.0000227
 PLAT BEARING = GRID BEARING
 NO ROTATION

THIS INSTRUMENT PREPARED BY
 PERRY C. WHITE, P.S.M. 4213, STATE OF FLORIDA
 LAWSON, NOBLE AND WEBB, INC.
 ENGINEERS PLANNERS SURVEYORS
 420 COLUMBIA DRIVE, SUITE 110
 WEST PALM BEACH, FLORIDA 33409
 LB-6674

