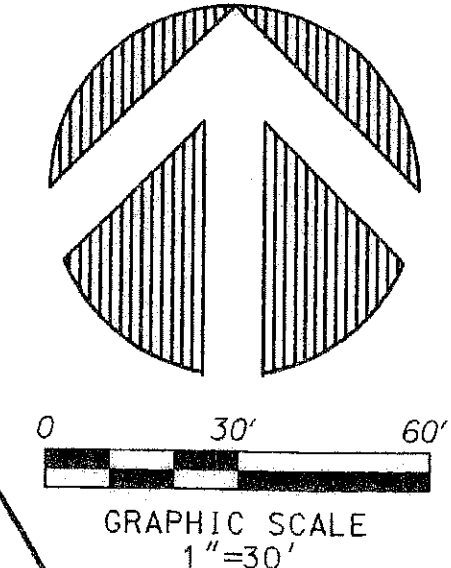


PERIMETER
 SURVEYING & MAPPING
 Prepared by: Jeff S. Hodapp, P.S.M.
 Certificate of Authorization No. LB7264
 951 Broken Sound Parkway, Suite 320
 Boca Raton, Florida 33487
 Tel: (561) 241-9988
 Fax: (561) 241-5182

CORTINA PUD REPLAT

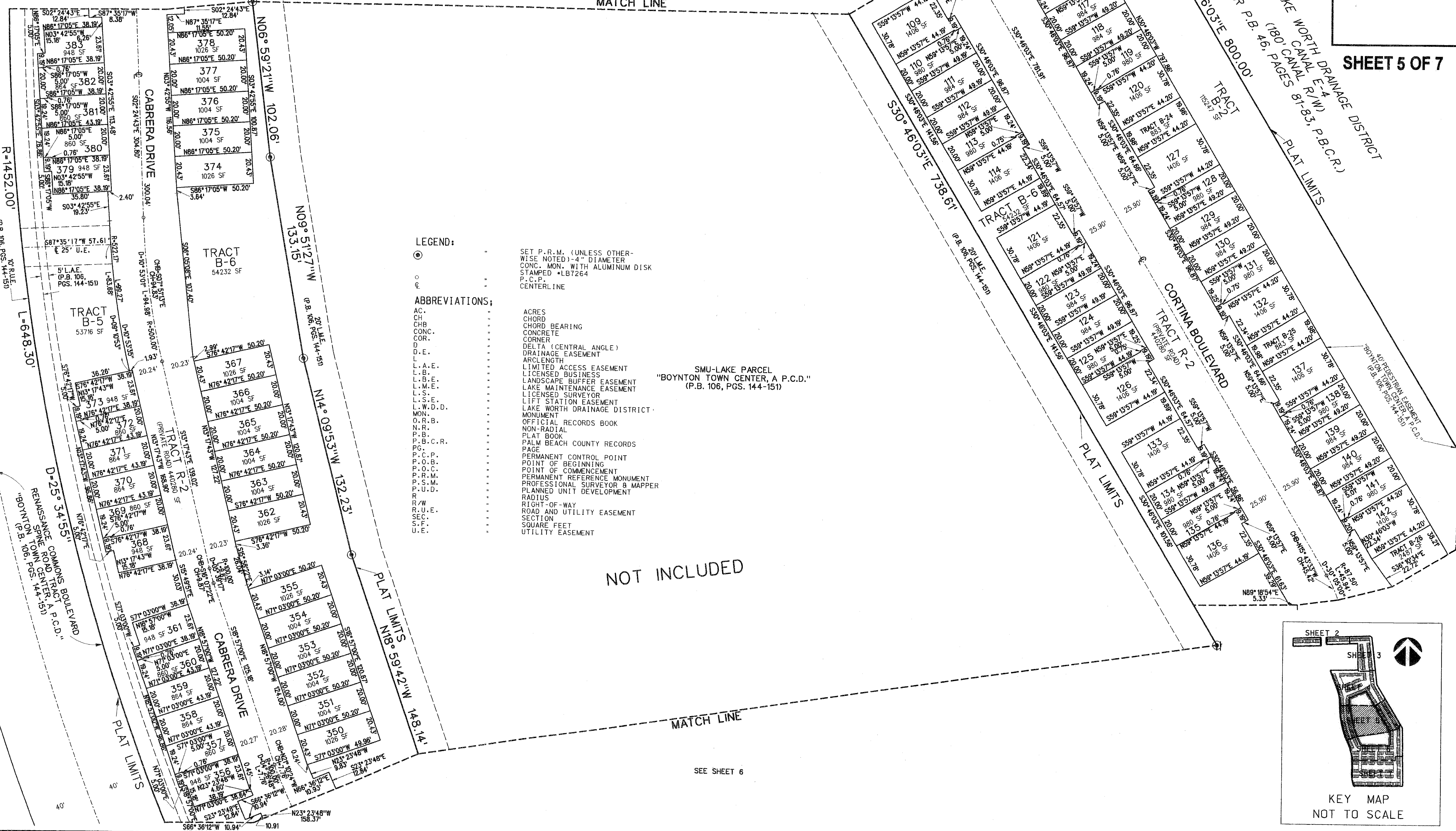
A REPLAT OF ALL OF "CORTINA PUD" (P.B. 108, PGS. 61-67, P.B.C.R.) IN SECTION 17,
 TOWNSHIP 45 SOUTH, RANGE 43 EAST, CITY OF BOYNTON BEACH,
 PALM BEACH COUNTY, FLORIDA. APRIL, 2007.

200



SHEET 5 OF 7

SEE SHEET 4
MATCH LINE

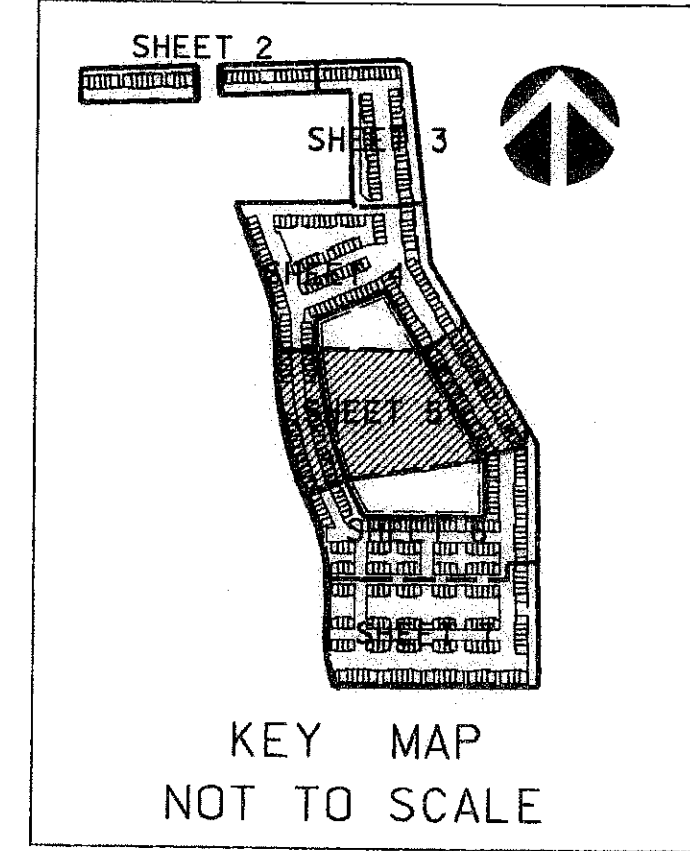


- LEGEND:**
- SET P.R.M. (UNLESS OTHERWISE NOTED)-4" DIAMETER CONC. MON. WITH ALUMINUM DISK STAMPED •LB7264 P.C.P. CENTERLINE
 - ABBREVIATIONS:
 - AC. ACRES
 - CHB CHORD
 - CHB CHORD BEARING
 - CONC. CONCRETE
 - CORNER CORNER
 - D DELTA (CENTRAL ANGLE)
 - D.E. DRAINAGE EASEMENT
 - ARLENGTH ARLENGTH
 - L.A.E. LIMITED ACCESS EASEMENT
 - L.B.E. LICENSED BUSINESS
 - L.M.E. LANDSCAPE BUFFER EASEMENT
 - L.M.E. LAKE MAINTENANCE EASEMENT
 - L.S.E. LICENSED SURVEYOR
 - L.S.E. LIFT STATION EASEMENT
 - L.W.D.D. LAKE WORTH DRAINAGE DISTRICT
 - MON. MONUMENT
 - O.R.B. OFFICIAL RECORDS BOOK
 - NON-RADIAL NON-RADIAL
 - P.B. PALM BEACH COUNTY RECORDS
 - P.B.C.R. PALM BEACH COUNTY RECORDS
 - P.G. PAGE
 - P.C.P. PERMANENT CONTROL POINT
 - P.O.B. POINT OF BEGINNING
 - P.O.C. POINT OF COMMENCEMENT
 - P.R.M. PERMANENT REFERENCE MONUMENT
 - P.S.M. PROFESSIONAL SURVEYOR & MAPPER
 - P.U.D. PLANNED UNIT DEVELOPMENT
 - RADIUS RADIUS
 - R.O.W. RIGHT-OF-WAY
 - R.U.E. ROAD AND UTILITY EASEMENT
 - SEC. SECTION
 - S.F. SQUARE FEET
 - U.E. UTILITY EASEMENT

SMU-LAKE PARCEL
 "BOYNTON TOWN CENTER, A P.C.D."
 (P.B. 106, PGS. 144-151)

NOT INCLUDED

SEE SHEET 6



LAKE WORTH DRAINAGE DISTRICT
 (180' CANAL R/W)
 (PER P.B. 46, PAGES 81-83, P.B.C.R.)
 PLAT LIMITS

R-1452.00'
 (P.B. 106, PGS. 144-151)

L-648.30'
 (P.B. 106, PGS. 144-151)

D=25' 34.15"
 RENAISSANCE COMMONS BOULEVARD
 "BOYNTON TOWN CENTER, A P.C.D."
 (P.B. 106, PGS. 144-151)

CABRERA DRIVE
 300.04'
 (P.B. 106, PGS. 144-151)

TRACT B-5
 5376 SF

TRACT R-2
 440260 SF

CABRERA DRIVE
 171.20'
 (P.B. 106, PGS. 144-151)

PLAT LIMITS

TRACT B-6
 54232 SF

TRACT R-2
 440260 SF

PLAT LIMITS
 N18° 59' 42" W 148.14'

PLAT LIMITS
 N18° 59' 42" W 102.06'

PLAT LIMITS
 N14° 09' 53" W 132.23'

PLAT LIMITS
 N09° 51' 27" W 133.15'

PLAT LIMITS
 N06° 59' 21" W 102.06'