

PERIMETER
 SURVEYING & MAPPING
 Prepared by: Jeff S. Hodapp, P.S.M.
 Certificate of Authorization No. LB7264
 951 Broken Sound Parkway, Suite 320
 Boca Raton, Florida 33487
 Tel: (561) 241-9988
 Fax: (561) 241-5182

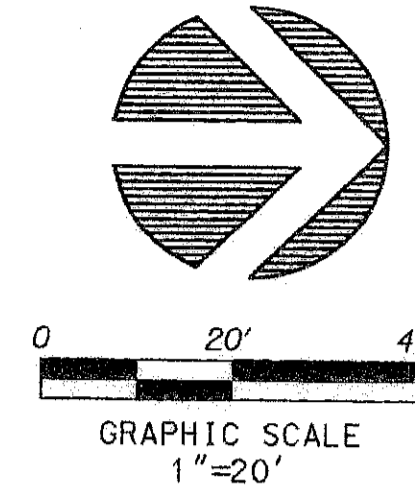
VISTABELLA AT RENAISSANCE COMMONS REPLAT 1, A P.U.D.

A REPLAT OF TRACT LOTS 36-45 AND TRACTS B-18 AND B-19, "VISTABELLA AT RENAISSANCE COMMONS, A P.U.D."

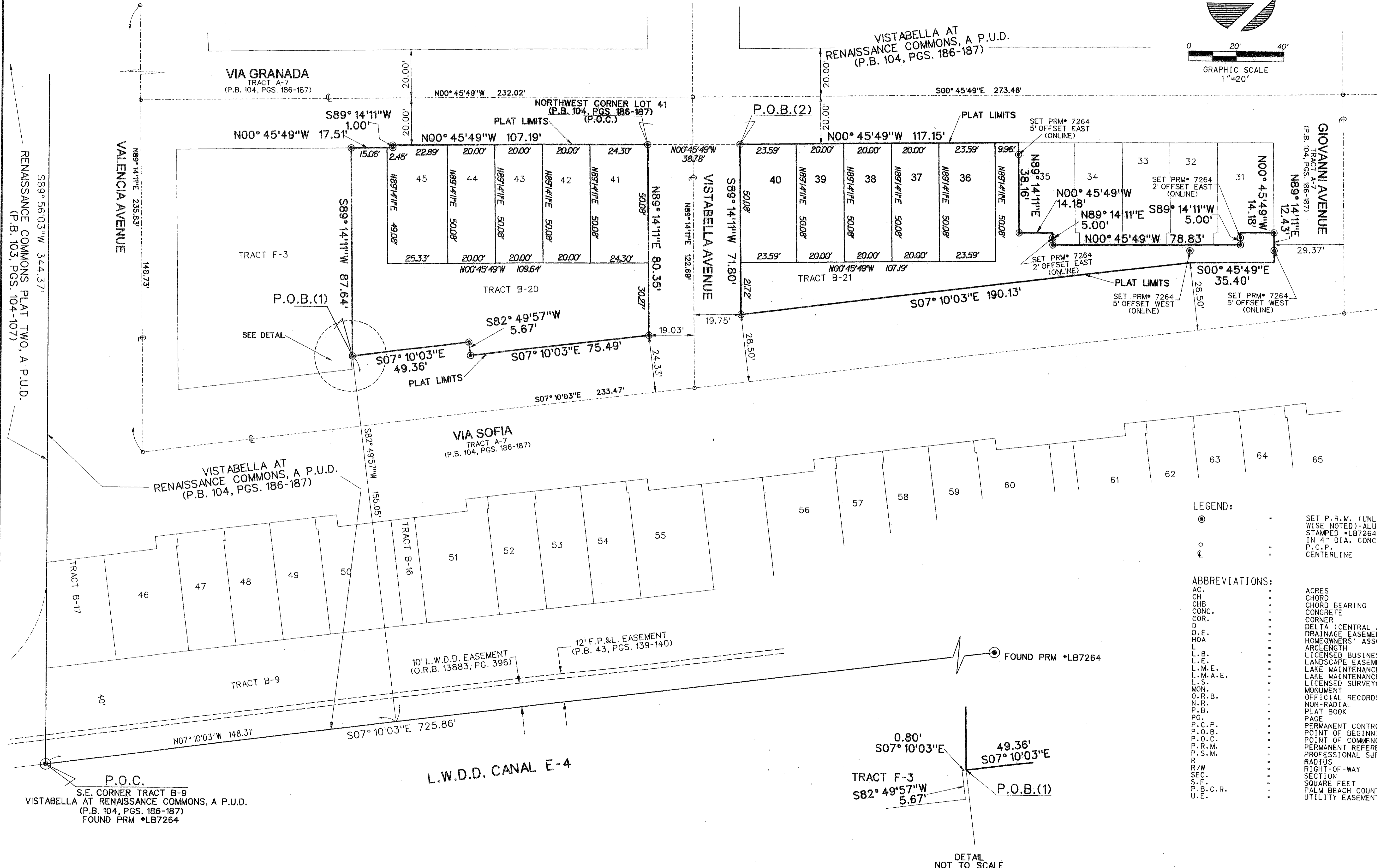
(P.B. 104, PGS. 186-187, P.B.C.R.) IN SECTION 17, TOWNSHIP 45 SOUTH, RANGE 43, EAST,
 CITY OF BOYNTON BEACH, PALM BEACH COUNTY, FLORIDA.

MARCH, 2007

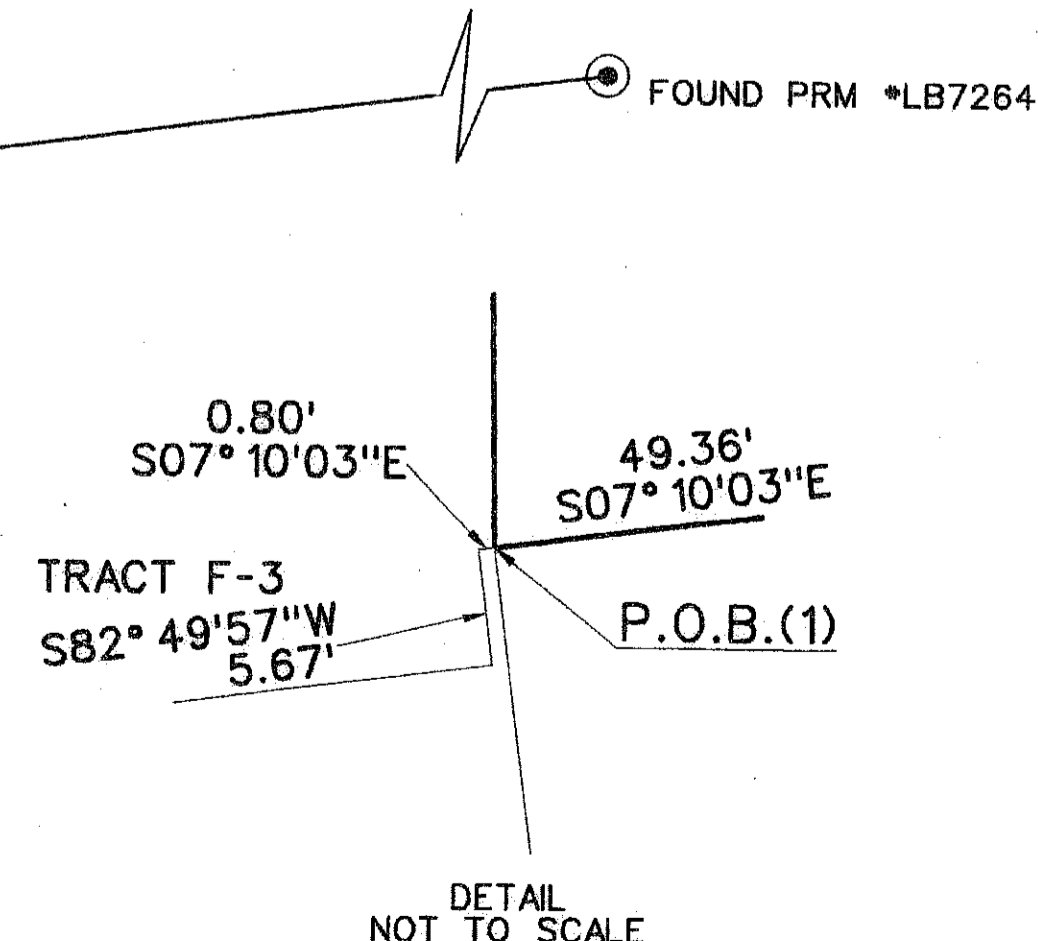
129



SHEET 2 OF 2



- LEGEND:**
- SET P.R.M. (UNLESS OTHERWISE NOTED)-ALUMINUM DISK STAMPED *LB7264 IN 4" DIA. CONC. MON.
 - P.C.P.
 - ⊕ CENTERLINE
- ABBREVIATIONS:**
- AC. ACRES
 - CH. CHORD
 - CHB. CHORD BEARING
 - CONC. CONCRETE
 - COR. CORNER
 - D. DELTA (CENTRAL ANGLE)
 - DRAIN. EASEMENT DRAINAGE EASEMENT
 - HOA. HOMEOWNERS' ASSOCIATION
 - L. ARCLength
 - L.B. LICENSED BUSINESS
 - L.E. LANDSCAPE EASEMENT
 - L.M.E. LAKE MAINTENANCE EASEMENT
 - L.M.A.E. LAKE MAINTENANCE ACCESS EASEMENT
 - L.S. LICENSED SURVEYOR
 - MON. MONUMENT
 - O.R.B. OFFICIAL RECORDS BOOK
 - N.R. NON-RADIAL
 - P.B. PLAT BOOK
 - PG. PAGE
 - P.C.P. PERMANENT CONTROL POINT
 - P.O.B. POINT OF BEGINNING
 - P.O.C. POINT OF COMMENCEMENT
 - P.R.M. PERMANENT REFERENCE MONUMENT
 - P.S.M. PROFESSIONAL SURVEYOR & MAPPER
 - R. RADIUS
 - R/W. RIGHT-OF-WAY
 - SEC. SECTION
 - S.F. SQUARE FEET
 - P.B.C.R. PALM BEACH COUNTY RECORDS
 - U.E. UTILITY EASEMENT



P.O.C.
 S.E. CORNER TRACT B-9
 VISTABELLA AT RENAISSANCE COMMONS, A P.U.D.
 (P.B. 104, PGS. 186-187)
 FOUND PRM *LB7264