

# FRENCHMAN'S RESERVE PCD - GOLF COURSE

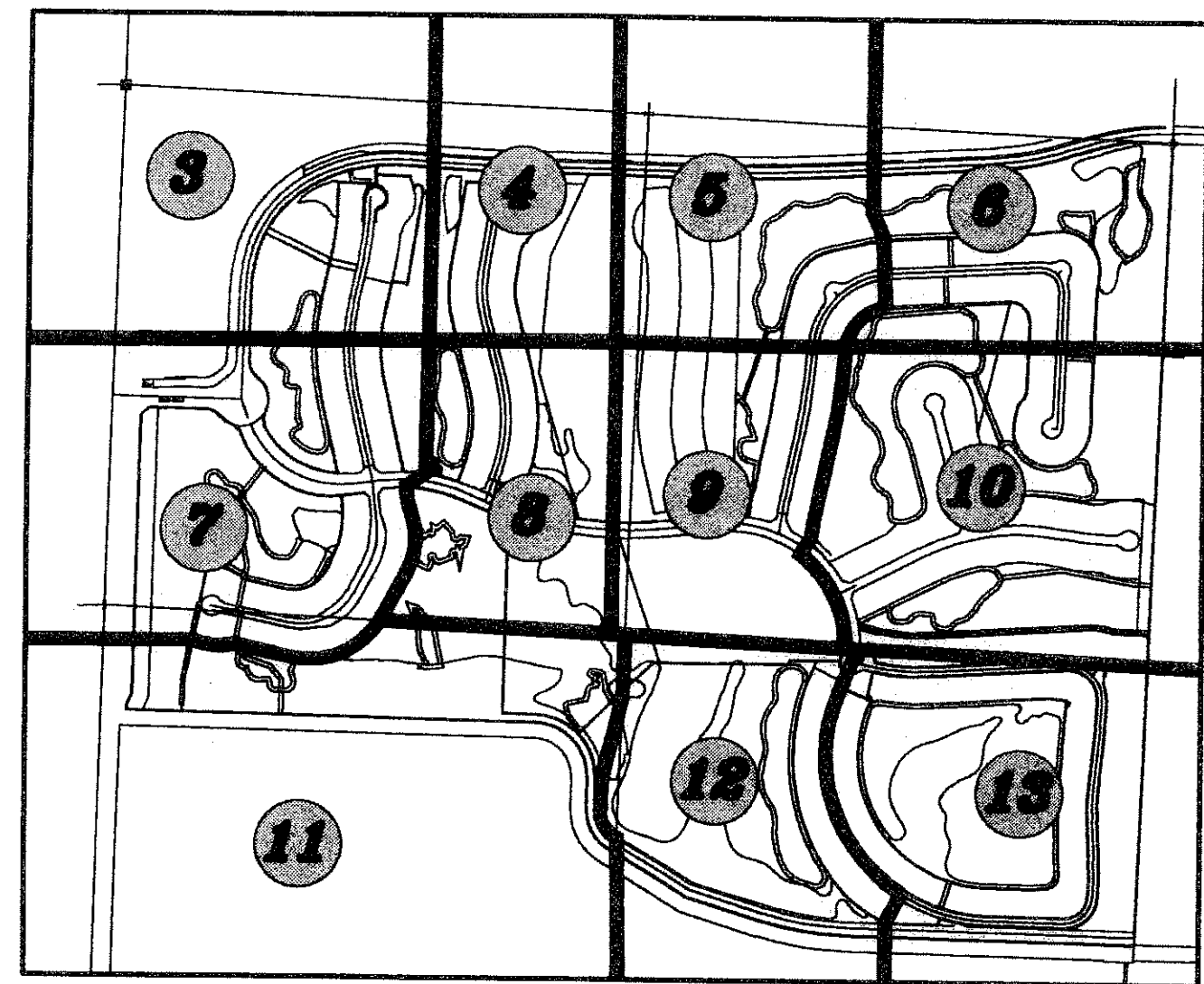
BEING A REPLAT OF TRACT G AND A PORTION OF TRACT C, FRENCHMAN'S RESERVE PCD - PLAT ONE, AS RECORDED IN PLAT BOOK 92, AT PAGE 11, TRACT OS1, FRENCHMAN'S RESERVE PCD - PLAT "A", AS RECORDED IN PLAT BOOK 92, AT PAGE 194, TRACTS OS1 AND OS4, FRENCHMAN'S RESERVE PCD - PLAT "B", AS RECORDED IN PLAT BOOK 96, AT PAGE 102, A PORTION OF TRACT OS2, FRENCHMAN'S RESERVE PCD - PLAT "D", AS RECORDED IN PLAT BOOK 93, AT PAGE 123, TRACTS "G1" AND "G2", FRENCHMAN'S RESERVE PCD - PLAT E, AS RECORDED IN PLAT BOOK 101, AT PAGE 1, TRACTS A, B, C, D, E, H, OS1 AND OS2, FRENCHMAN'S RESERVE PCD - PLAT F, AS RECORDED IN PLAT BOOK 93, AT PAGE 82, TRACTS C AND D, FRENCHMAN'S RESERVE PCD - CLUBHOUSE, AS RECORDED IN PLAT BOOK 94, AT PAGE 138, PUBLIC RECORDS, PALM BEACH COUNTY, FLORIDA.

LYING IN SECTION 31, TOWNSHIP 41 SOUTH, RANGE 43 EAST,  
CITY OF PALM BEACH GARDENS, PALM BEACH COUNTY, FLORIDA.

OCTOBER, 2006 SHEET 12 OF 15

STATE OF FLORIDA  
COUNTY OF PALM BEACH  
THIS PLAT WAS FILED FOR  
RECORD AT \_\_\_\_\_ M.  
THIS \_\_\_\_\_ DAY OF \_\_\_\_\_  
A.D. 2006 AND DULY RECORDED  
IN PLAT BOOK \_\_\_\_\_ ON  
PAGES \_\_\_\_\_ AND \_\_\_\_\_  
SHARON R. BOCK  
CLERK AND COMPTROLLER  
BY: \_\_\_\_\_  
DEPUTY CLERK

34

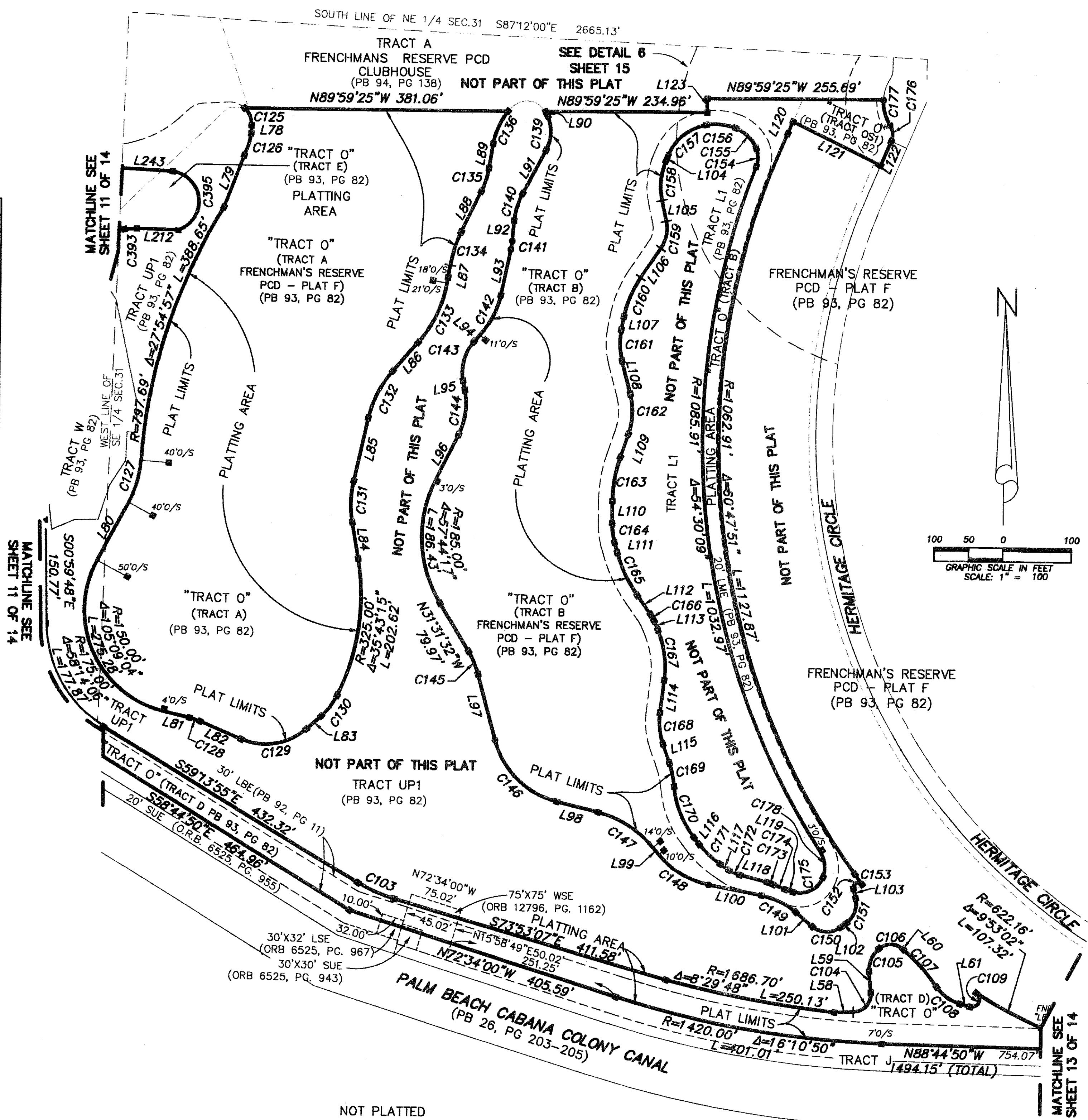


KEY MAP  
NOT TO SCALE

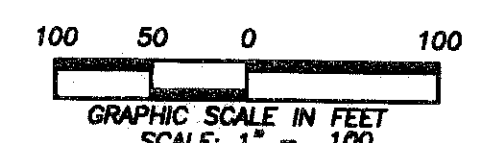
LINE	BEARING	DISTANCE
L58	N88°48'32"E	27.36'
L59	N05°19'22"W	30.76'
L60	S49°51'56"E	1.33'
L61	S75°12'17"E	15.42'
L78	N02°00'09"E	11.88'
L79	N20°42'36"E	81.39'
L80	N28°06'13"E	95.87'
L81	N77°02'51"W	38.88'
L82	N67°34'57"W	64.63'
L83	S47°48'57"W	28.35'
L84	S09°40'37"E	53.84'
L85	S12°31'17"W	93.54'
L86	S41°12'43"W	54.63'
L87	S09°35'33"W	26.20'
L88	S25°47'19"W	65.76'
L89	S08°15'50"W	36.21'
L90	S23°56'13"E	7.28'
L91	N27°54'07"E	71.88'
L92	N05°18'32"E	29.14'
L93	N11°56'19"E	66.95'
L94	N41°59'47"E	12.81'
L95	N11°29'02"W	13.91'
L96	N26°12'44"E	74.10'
L97	N15°08'25"W	98.49'
L98	N75°59'17"W	62.70'
L99	N39°10'13"W	13.47'
L100	N79°02'12"W	78.63'
L101	N49°51'58"W	32.11'
L102	S52°13'25"W	10.57'
L103	S13°17'33"E	14.74'
L104	S21°38'59"W	8.39'
L105	S11°58'24"E	30.98'
L106	N34°33'43"E	50.53'
L107	N10°53'02"E	19.01'
L108	N14°44'05"W	49.68'
L109	N18°58'55"E	35.16'
L110	N00°19'24"E	31.78'
L111	S15°41'42"E	15.29'
L112	N35°34'52"W	33.35'
L113	S23°05'20"E	14.16'
L114	N06°51'22"E	47.29'
L115	N19°34'27"W	29.26'
L116	N38°14'18"W	12.49'
L117	N55°31'06"W	15.68'
L118	S75°45'31"E	41.11'
L119	N72°52'47"W	12.26'
L120	S23°09'14"W	18.50'
L121	N64°04'55"W	142.51'
L122	S23°00'02"W	38.19'
L123	N00°00'35"E	20.00'
L212	N88°48'32"W	60.30'
L243	S87°09'51"E	106.54'

LEGEND:

- CL = CENTERLINE
- DE = DRAINAGE EASEMENT
- DB = DEED BOOK
- Δ = DELTA
- ND = FOUND
- FPL = FLORIDA POWER & LIGHT
- IP = IRON PIPE
- IRC = IRON ROD WITH PLASTIC CAP
- L = LENGTH
- LAE = LIMITED ACCESS EASEMENT
- LBE = LANDSCAPE BUFFER EASEMENT
- LSE = LIFT STATION EASEMENT
- LME = LAKE MAINTENANCE EASEMENT
- LB = LICENSE BUSINESS
- ORB = OFFICIAL RECORD BOOK
- Q/S = OFF SET
- PBCO = PALM BEACH COUNTY
- (P) = PLAT
- PB = PLAT BOOK
- PK = PARKER KAYLON NAIL
- PRM = PERMANENT REFERENCE MONUMENT
- PSUE = PRIVATE SPECIFIC USE EASEMENT
- R = RADIUS
- R/W = RIGHT-OF-WAY
- SUE = SEACOST UTILITY EASEMENT
- UE = UTILITY EASEMENT
- WBE = WETLAND BUFFER EASEMENT
- WSE = WATER AND SEWER EASEMENT
- = SET PERMANENT REFERENCE MONUMENT (PRM) "LB 7055" UNLESS OTHERWISE NOTED
- ⊙ = SET PK NAIL AND DISC "LB 7055" UNLESS OTHERWISE NOTED



CURVE	RADIUS	CENTRAL ANGLE	LENGTH	CHORD BEARING	CHORD DISTANCE
C103	225.00'	14°39'12"	57.54'	S66°33'31"E	57.39'
C104	26.00'	94°07'54"	42.72'	N41°44'35"E	38.07'
C105	38.68'	55°37'42"	37.56'	S22°29'29"W	36.10'
C106	27.00'	79°49'44"	37.62'	N89°46'48"W	34.65'
C107	275.00'	15°13'18"	73.06'	N42°15'17"W	72.84'
C108	60.00'	40°33'39"	42.48'	S54°55'27"E	41.59'
C109	11.00'	162°39'07"	31.23'	N23°28'10"E	21.75'
C125	32.00'	49°41'32"	27.75'	N22°50'37"W	26.89'
C126	94.39'	20°06'44"	33.13'	N17°00'18"E	32.96'
C127	150.00'	24°23'51"	63.87'	N15°54'17"E	63.39'
C128	100.00'	9°27'54"	16.52'	N72°18'54"W	16.50'
C129	90.00'	64°36'06"	101.48'	N80°07'00"E	96.19'
C130	100.00'	21°46'19"	38.00'	N36°55'48"E	37.77'
C131	155.00'	22°11'54"	60.05'	S01°25'20"W	59.68'
C132	155.00'	28°41'26"	77.62'	S26°52'00"W	76.81'
C133	175.00'	31°37'10"	96.58'	N25°24'08"E	95.36'
C134	175.00'	16°11'46"	49.47'	S17°41'26"W	49.30'
C135	125.00'	16°31'29"	36.05'	N17°31'34"E	35.93'
C136	100.00'	29°42'01"	51.84'	S24°06'50"W	51.26'
C139	56.40'	51°50'19"	51.03'	N01°58'57"E	49.31'
C140	105.00'	22°35'35"	41.40'	S16°36'19"W	41.14'
C141	105.00'	6°37'47"	12.15'	N08°37'25"E	12.14'
C142	125.00'	30°03'28"	65.58'	N26°58'03"E	64.83'
C143	65.00'	53°28'49"	60.67'	S15°15'23"W	58.49'
C144	100.00'	37°41'46"	65.79'	N07°21'51"E	64.61'
C145	125.00'	16°23'07"	35.75'	N23°19'59"W	35.63'
C146	125.00'	60°50'52"	132.75'	S45°33'51"E	126.60'
C147	150.00'	36°49'04"	96.39'	N57°34'45"W	94.74'
C148	125.00'	39°51'58"	86.97'	S59°06'13"E	85.23'
C149	110.00'	29°10'14"	56.00'	N64°27'05"W	55.40'
C150	33.00'	77°54'37"	44.87'	S88°49'17"E	41.50'
C151	35.00'	65°30'57"	40.02'	N19°27'56"E	37.88'
C152	7.10'	156°36'51"	19.41'	S65°00'53"W	13.91'
C153	622.16'	1°41'56"	18.45'	S35°49'43"E	18.45'
C154	35.00'	44°18'40"	27.07'	N00°53'45"W	26.40'
C155	54.00'	45°39'48"	43.04'	N45°52'59"W	41.91'
C156	79.80'	31°14'11"	43.51'	N84°19'58"W	42.97'
C157	73.00'	58°23'58"	74.41'	S50°50'58"W	71.23'
C158	100.00'	33°38'23"	58.71'	S04°49'47"W	57.87'
C159	50.00'	46°33'07"	40.62'	N11°17'09"E	39.52'
C160	150.00'	23°40'41"	61.99'	S22°43'23"W	61.55'
C161	100.00'	25°37'07"	44.71'	S01°55'31"E	44.34'
C162	100.00'	33°43'00"	58.85'	N02°07'25"E	58.00'
C163	200.00'	16°39'30"	65.13'	S09°39'10"W	64.84'
C164	100.00'	16°01'06"	27.96'	S07°41'09"E	27.87'
C165	200.00'	19°53'10"	69.42'	S25°38'17"E	69.07'
C166	50.00'	12°29'32"	10.90'	N29°20'06"W	10.88'
C167	140.00'	29°56'42"	73.17'	N08°06'59"W	72.34'
C168	100.00'	26°25'49"	46.13'	S06°21'33"E	45.72'
C169	140.00'	14°19'18"	34.99'	N12°24'48"W	34.90'
C170	140.00'	32°59'09"	80.60'	S21°44'43"E	79.49'
C171	140.00'	17°16'48"	42.22'	S46°52'42"E	42.06'
C172	50.00'	20°14'25"	17.66'	S65°38'18"E	17.57'
C173	40.00'	13°43'49"	9.59'	N68°53'36"W	9.56'
C174	98.00'	10°51'05"	18.56'	S67°27'14"E	18.53'
C175	35.00'	87°45'00"	53.60'	N63°14'43"E	48.52'
C176	25.00'	55°22'35"	24.16'	N04°41'15"W	23.23'
C177	63.00'	34°44'37"	38.20'	N15°00'10"W	37.62'
C178	43.00'	52°36'47"	39.49'	N06°56'11"W	38.11'
C393	100.00'	10°28'56"	18.29'	S85°57'04"W	18.27'
C395	43.82'	15°34'10"	117.55'	N05°55'08"W	85.35'



NOT PLATTED

**Wantman Group, Inc.**  
Engineering ♦ Surveying ♦ Mapping  
2035 VISTA PARKWAY, SUITE 100  
WEST PALM BEACH, FL 33411  
(561) 687-2220 phone (561) 687-1110 fax  
CERT No. 6091 - LB No. 7055  
THIS INSTRUMENT WAS PREPARED BY DEREK G. ZEMAN, P.S.M.  
PROFESSIONAL SURVEYOR AND MAPPER, LICENSE NO. 5655  
FOR THE FIRM: WANTMAN GROUP, INC.

C:\WORK\PROJECTS\FRENCHMAN GOLF COURSE\PLAT\PLAT\_0012.DWG SHEET 12 OF 15, 2006