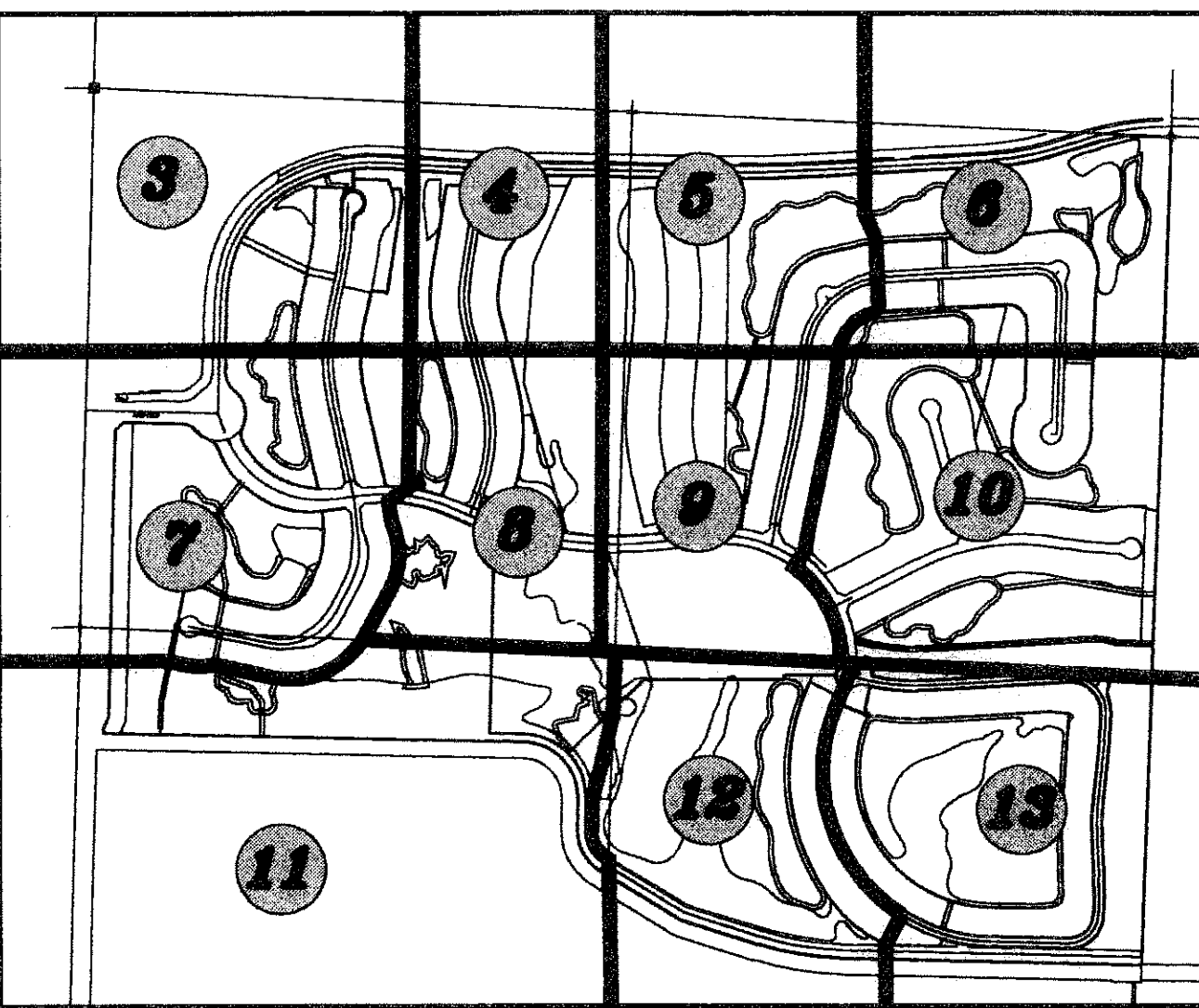


# FRENCHMAN'S RESERVE PCD - GOLF COURSE

BEING A REPLAT OF TRACT G AND A PORTION OF TRACT C, FRENCHMAN'S RESERVE PCD - PLAT ONE, AS RECORDED IN PLAT BOOK 92, AT PAGE 11, TRACT OS1, FRENCHMAN'S RESERVE PCD - PLAT "A", AS RECORDED IN PLAT BOOK 92, AT PAGE 194, TRACTS OS1 AND OS4, FRENCHMAN'S RESERVE PCD - PLAT "B", AS RECORDED IN PLAT BOOK 96, AT PAGE 102, A PORTION OF TRACT OS2, FRENCHMAN'S RESERVE PCD - PLAT "D", AS RECORDED IN PLAT BOOK 93, AT PAGE 123, TRACTS "G1" AND "G2", FRENCHMAN'S RESERVE PCD - PLAT E, AS RECORDED IN PLAT BOOK 101, AT PAGE 1, TRACTS A, B, C, D, E, H, OS1 AND OS2, FRENCHMAN'S RESERVE PCD - PLAT F, AS RECORDED IN PLAT BOOK 93, AT PAGE 82, TRACTS C AND D, FRENCHMAN'S RESERVE PCD - CLUBHOUSE, AS RECORDED IN PLAT BOOK 94, AT PAGE 138, PUBLIC RECORDS, PALM BEACH COUNTY, FLORIDA.

LYING IN SECTION 31, TOWNSHIP 41 SOUTH, RANGE 43 EAST,  
CITY OF PALM BEACH GARDENS, PALM BEACH COUNTY, FLORIDA.

OCTOBER, 2008 SHEET 11 OF 15

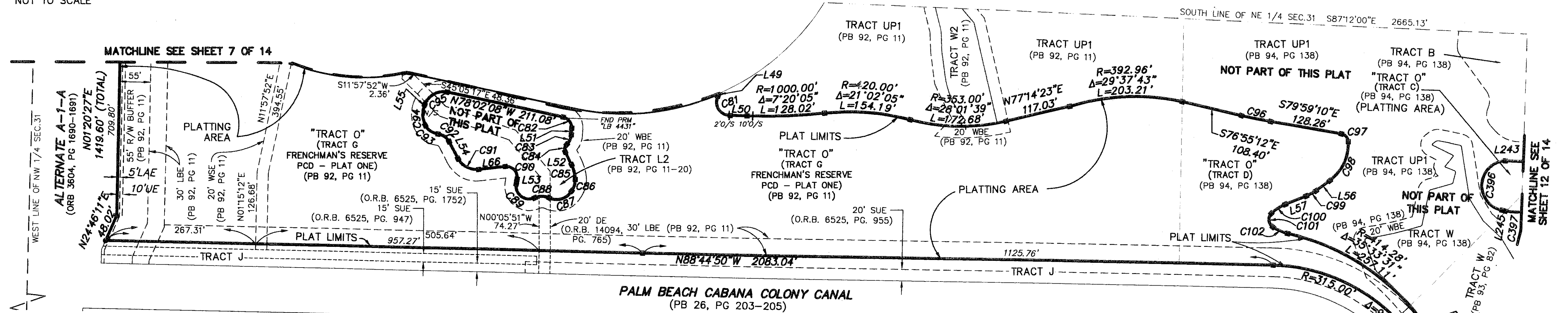


KEY MAP  
NOT TO SCALE

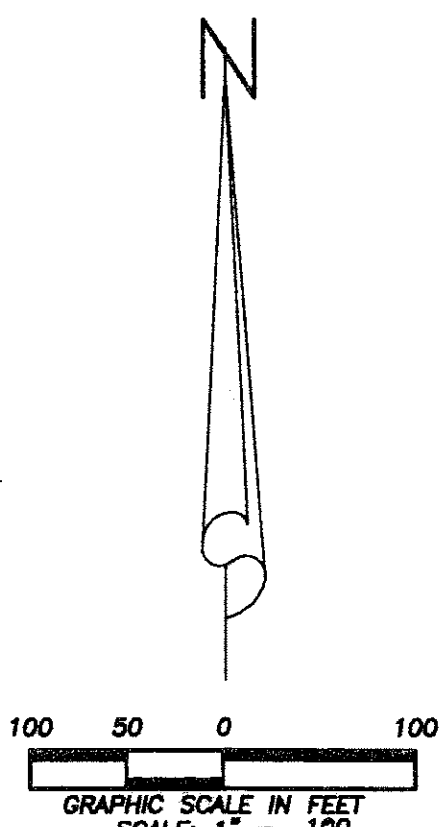
STATE OF FLORIDA  
COUNTY OF PALM BEACH  
THIS PLAT WAS FILED FOR  
RECORD AT \_\_\_\_\_ M.  
THIS \_\_\_\_\_ DAY OF \_\_\_\_\_  
A.D. 2008 AND DULY RECORDED  
IN PLAT BOOK \_\_\_\_\_ ON  
PAGES \_\_\_\_\_ AND \_\_\_\_\_

SHARON R. BOCK  
CLERK AND COMPTROLLER

By: \_\_\_\_\_  
DEPUTY CLERK



- LEGEND:**
- CL = CENTERLINE
  - DE = DRAINAGE EASEMENT
  - DB = DEED BOOK
  - Δ = DELTA
  - FND = FOUND
  - FPL = FLORIDA POWER & LIGHT
  - IP = IRON PIPE
  - IRC = IRON ROD WITH PLASTIC CAP
  - L = LENGTH
  - LAE = LIMITED ACCESS EASEMENT
  - LBE = LANDSCAPE BUFFER EASEMENT
  - LSE = LIFT STATION EASEMENT
  - LME = LAKE MAINTENANCE EASEMENT
  - LB = LICENSE BUSINESS
  - ORB = OFFICIAL RECORD BOOK
  - O/S = OFF SET
  - PBCO = PALM BEACH COUNTY
  - (P) = PLAT
  - PB = PLAT BOOK
  - PK = PARKER KAYLON NAIL
  - PRM = PERMANENT REFERENCE MONUMENT
  - PSUE = PRIVATE SPECIFIC USE EASEMENT
  - R = RADIUS
  - R/W = RIGHT-OF-WAY
  - SUE = SEACOAST UTILITY EASEMENT
  - UE = UTILITY EASEMENT
  - WBE = WETLAND BUFFER EASEMENT
  - WSE = WATER AND SEWER EASEMENT
  - = SET PERMANENT REFERENCE MONUMENT (PRM) "LB 7055" UNLESS OTHERWISE NOTED
  - ⊙ = SET PK NAIL AND DISC "LB 7055" UNLESS OTHERWISE NOTED



LINE	BEARING	DISTANCE
L49	N28°40'18"E	6.64'
L50	S88°25'58"E	42.11'
L51	N03°22'33"E	11.76'
L52	N26°01'02"W	25.13'
L53	S09°21'28"W	8.85'
L54	S27°40'07"E	34.06'
L55	S19°33'38"W	3.52'
L56	S54°03'08"W	30.51'
L57	S69°15'05"W	40.02'
L66	N83°27'10"E	47.86'
L243	S87°09'51"E	106.54'
L245	N75°52'25"W	7.42'

CURVE	RADIUS	CENTRAL ANGLE	LENGTH	CHORD BEARING	CHORD DISTANCE
C81	23.00'	117°06'16"	47.01'	S29°52'50"E	39.24'
C82	19.00'	81°24'41"	27.00'	N37°19'48"W	24.78'
C83	25.70'	43°56'54"	19.71'	N25°20'59"E	19.23'
C84	11.25'	73°20'28"	14.40'	S10°39'12"W	13.44'
C85	67.83'	22°40'56"	26.85'	N14°40'34"W	26.68'
C86	31.49'	40°38'46"	22.34'	N18°01'46"E	21.88'
C87	30.65'	85°32'06"	45.76'	N72°53'14"E	41.62'
C88	30.00'	51°24'59"	26.92'	S89°56'47"W	26.03'
C89	23.00'	125°07'10"	50.23'	S53°12'07"E	40.82'
C90	19.00'	105°54'18"	35.12'	N43°35'41"W	30.33'
C91	36.50'	68°52'43"	43.88'	S62°06'28"E	41.28'
C92	25.50'	55°57'08"	24.90'	N55°38'41"W	23.92'
C93	29.20'	56°08'18"	28.61'	S55°33'06"E	27.48'
C94	41.71'	47°02'35"	34.24'	S03°57'40"E	33.29'
C95	35.00'	82°24'14"	50.34'	S60°45'45"W	46.11'
C96	1000.00'	3°03'58"	53.51'	S78°27'11"E	53.51'
C97	15.00'	77°11'12"	20.21'	N41°23'34"W	18.71'
C98	80.00'	56°51'06"	79.38'	S25°37'35"W	76.16'
C99	75.00'	15°11'57"	19.90'	N61°39'06"E	19.84'
C100	75.00'	22°50'33"	29.90'	S57°49'49"W	29.70'
C101	16.00'	99°09'16"	27.69'	S06°16'20"E	24.36'
C102	78.00'	21°27'58"	29.22'	S66°34'57"E	29.05'
C396	44.04'	167°30'28"	128.76'	S03°39'00"W	87.56'
C397	92.50'	21°52'04"	35.30'	S88°21'25"E	35.09'

**Wantman Group, Inc.**  
Engineering ♦ Surveying ♦ Mapping  
2035 VISTA PARKWAY, SUITE 100  
WEST PALM BEACH, FL 33411  
(561) 687-2220 phone (561) 687-1110 fax  
CERT No. 6091 - LB No. 7055  
THIS INSTRUMENT WAS PREPARED BY DEREK G. ZEMAN, P.S.M.  
PROFESSIONAL SURVEYOR AND MAPPER, LICENSE NO. 5655  
FOR THE FIRM: WANTMAN GROUP, INC.