

MEDITERRANEA PHASE 1

BEING A REPLAT OF A PORTION OF THE PLAT OF WOODS EDGE AS RECORDED IN PLAT BOOK 50, PAGES 130-131 AND LYING IN THE SOUTH HALF OF THE NORTHEAST QUARTER OF SECTION 25, TOWNSHIP 42 SOUTH, RANGE 42 EAST,

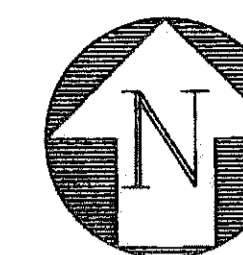
PALM BEACH COUNTY, FLORIDA

CITY OF RIVIERA BEACH, PALM BEACH COUNTY, FLORIDA

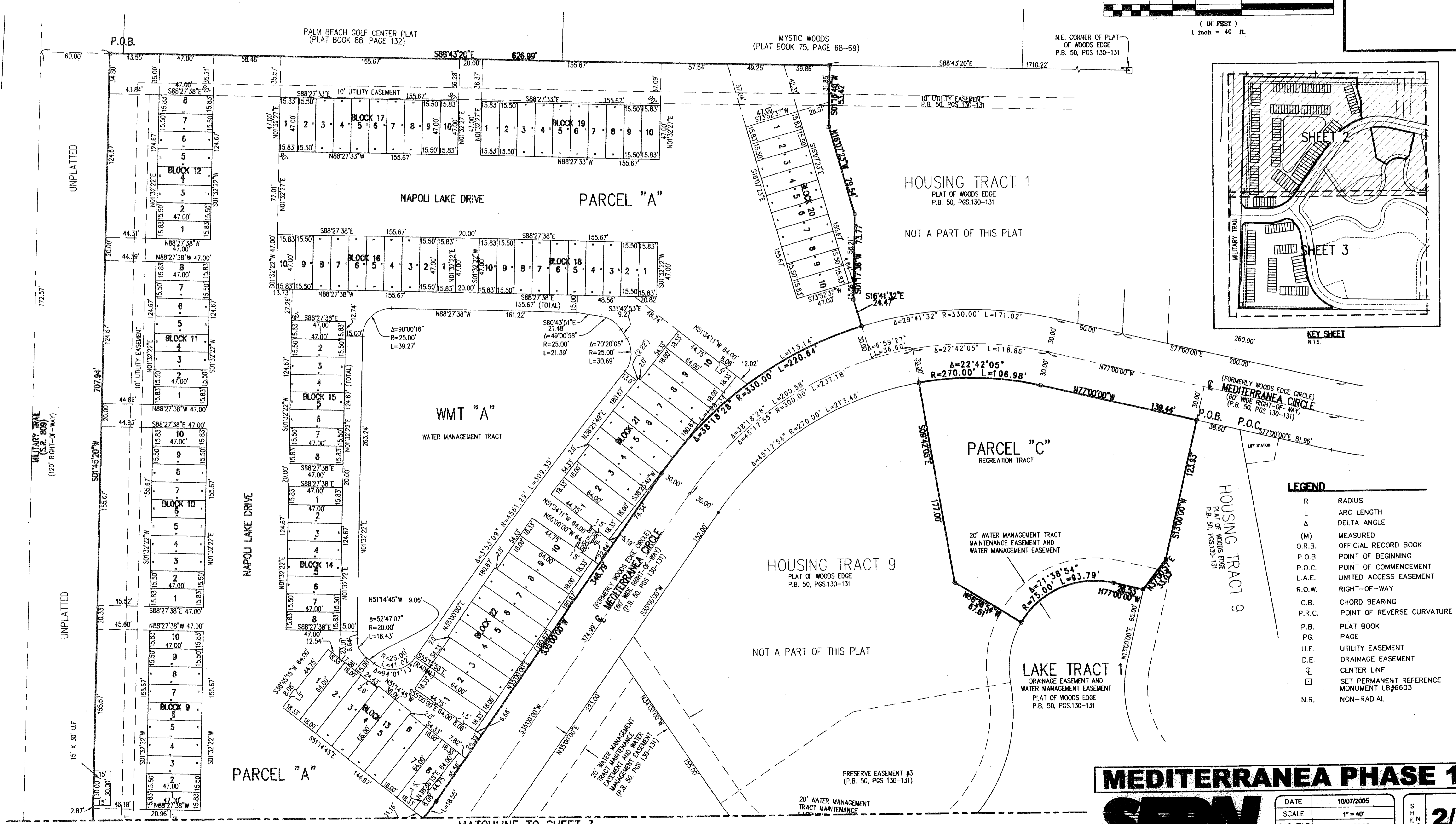
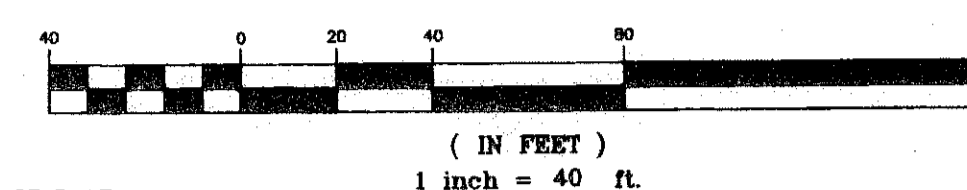
SHEET 2 OF 3 SEPTEMBER

2006

69



GRAPHIC SCALE



- LEGEND**
- R RADIUS
 - L ARC LENGTH
 - Δ DELTA ANGLE
 - (M) MEASURED
 - O.R.B. OFFICIAL RECORD BOOK
 - P.O.B. POINT OF BEGINNING
 - P.O.C. POINT OF COMMENCEMENT
 - L.A.E. LIMITED ACCESS EASEMENT
 - R.O.W. RIGHT-OF-WAY
 - C.B. CHORD BEARING
 - P.R.C. POINT OF REVERSE CURVATURE
 - P.B. PLAT BOOK
 - PG. PAGE
 - U.E. UTILITY EASEMENT
 - D.E. DRAINAGE EASEMENT
 - ☉ CENTER LINE
 - ☐ SET PERMANENT REFERENCE MONUMENT LB#6603
 - N.R. NON-RADIAL

MEDITERRANEA PHASE 1

SFRN
Engineers • Surveyors • Mappers

1201 BELVEDERE ROAD, WEST PALM BEACH, FLORIDA 33405
PH (561)555-1151 • FAX (561)832-9390 • WWW.SFRNINC.COM

DATE	10/07/2006
SCALE	1" = 40'
CAD FILE	4016.02.05
SISK PROJECT	4016.02.02
DRAWN	SFRN STAFF
CHECKED	G. RAYMAN

SHEET
2/3

JOB NO.
04016.02.05

Y:\Land Projects R2\4016.02.02.dwg\40160205_plat.dwg 10/20/2006 10:43:46 AM EST