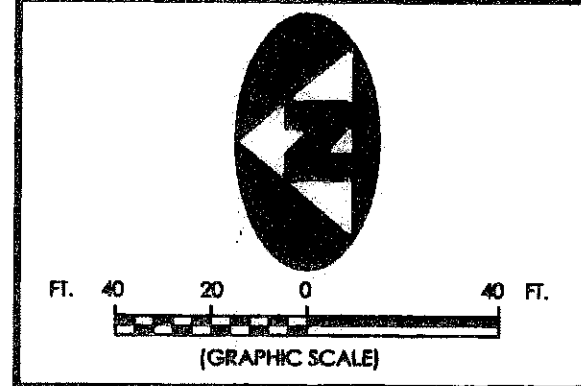
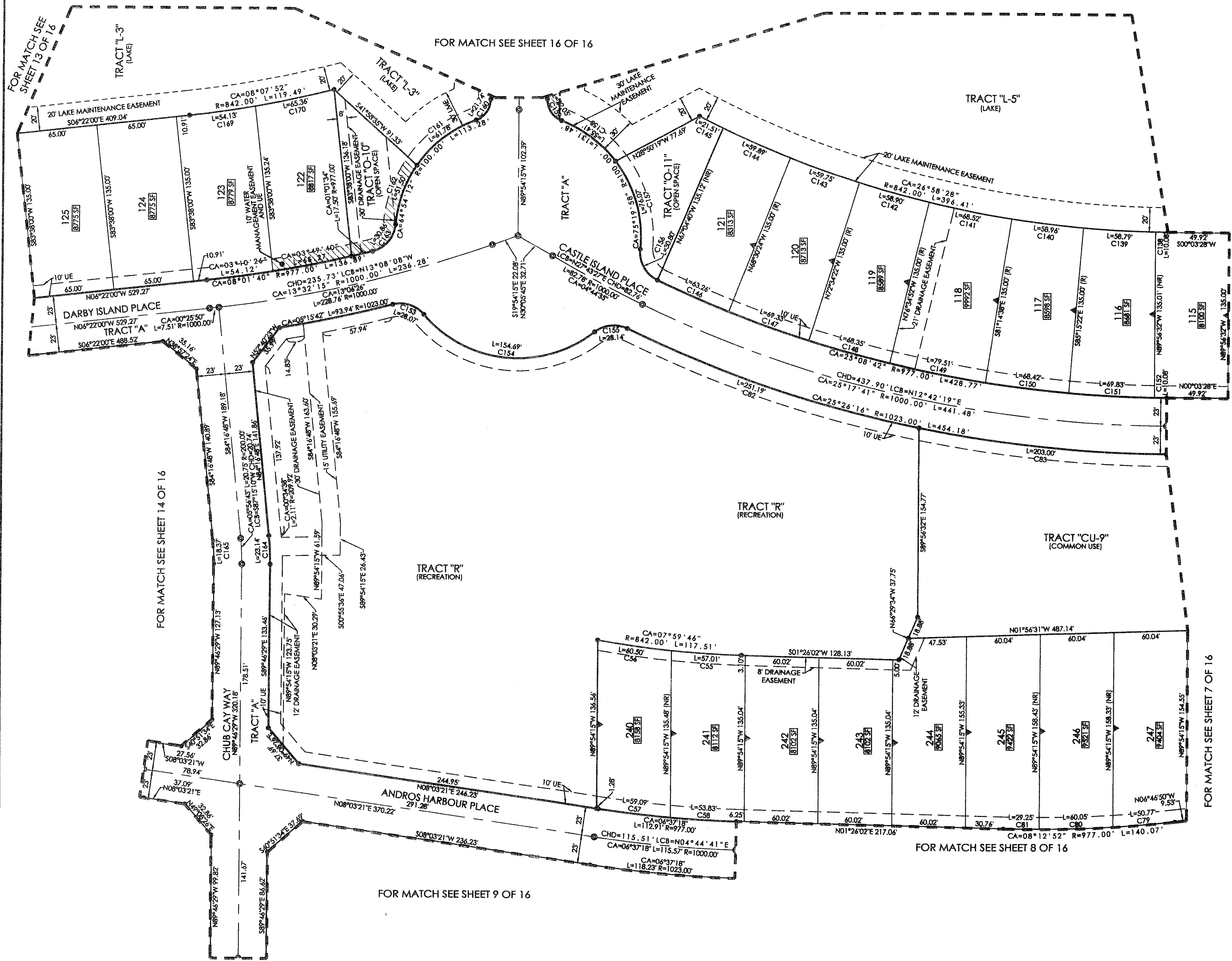


BEING A REPLAT OF JUPITER ISLES PLAT 1, JUPITER ISLES PLAT 2 AND JUPITER ISLES PLAT 3, RECORDED IN PLAT BOOK 102, PAGE 176, PLAT BOOK 102, PAGE 183 AND PLAT BOOK 102, PAGE 188, RESPECTIVELY, ALL LYING IN THE NORTHWEST ONE-QUARTER OF SECTION 33, TOWNSHIP 40 SOUTH, RANGE 42 EAST, TOWN OF JUPITER, PALM BEACH COUNTY, FLORIDA.



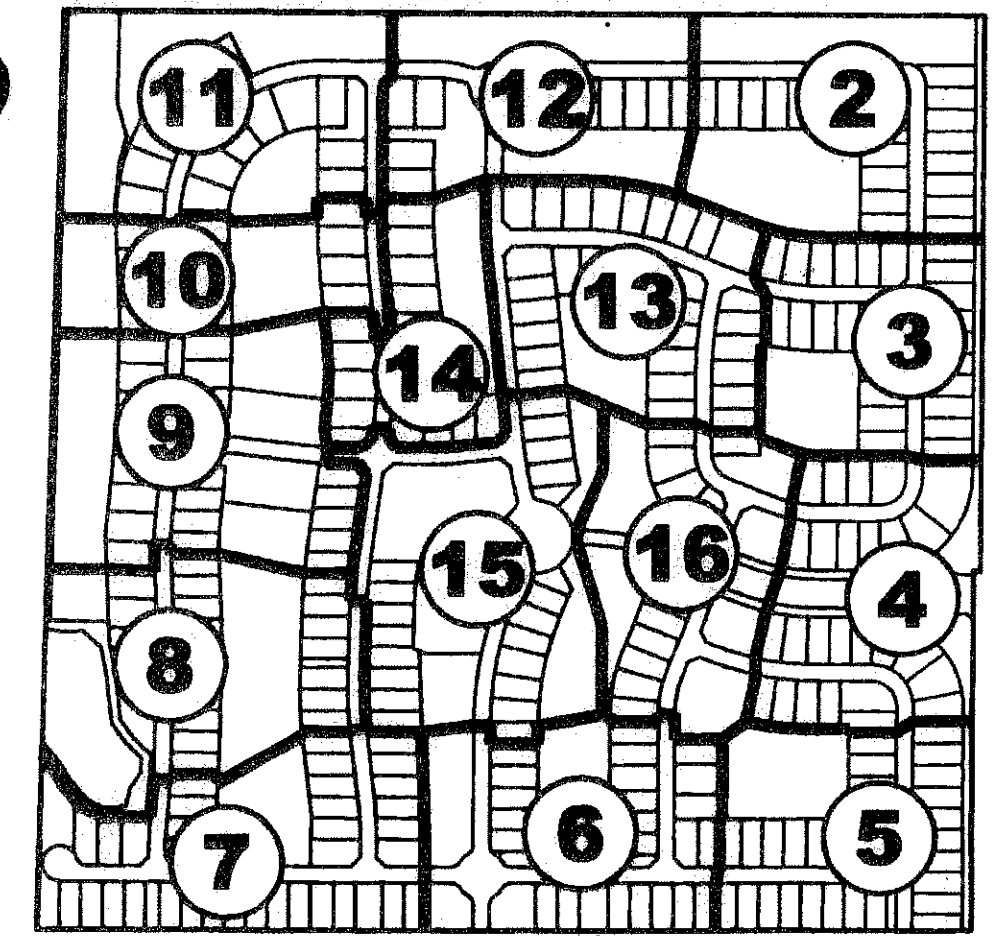
58



CURVE TABLE

Table with columns for Curve ID, Curve Angle (CA), Radius (R), Length (L), Chord (CHD), and Curve Data. It lists 170 curves with their respective geometric parameters.

SHEET INDEX (NOT TO SCALE)



11 DENOTES SHEET 11 OF 16

LEGEND

- Legend defining symbols for radial lines, centerlines, easements, bearings, distances, and other survey markers.

SURVEYOR'S NOTES

- Notes regarding the survey base, utility or drainage structures, and the preparation of the instrument by W.M. R. VAN CAMPEN.

File: P256LOXNORTHPLAT
FB: WO.NO.: P256
Scale: 1"=40' DATE: 10-18-2006
DWN: KVC SHEET 15 OF 16



ASSOCIATED LAND SURVEYORS, INC.
4152 W. BLUE HERON BOULEVARD-SUITE 121
RIVIERA BEACH, FLORIDA 33404
PHONE: (561) 848-2102 FAX: (561) 844-9659
EMAIL: ALSURVEY@AOL.COM