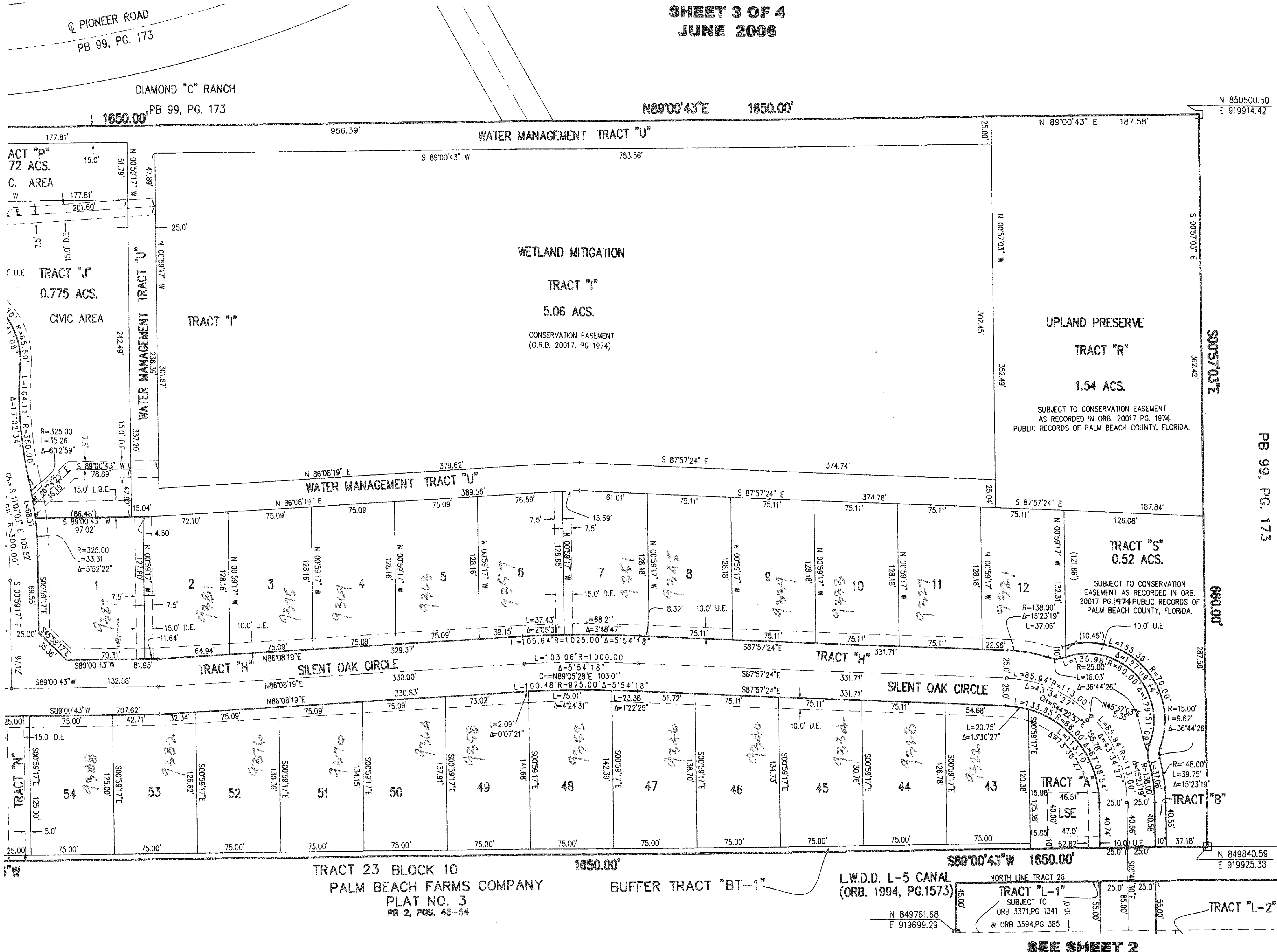


PIONEER TRAIL, A P.U.D.

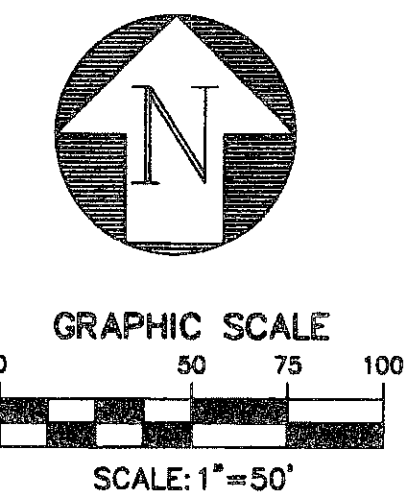
Being a replot of Tracts 22, 23, and the East Half of Tract 21, Block 10, together with Tract 25 and the East 232.4 feet of Tract 26, Block 10, all of Palm Beach Farms Co. Plat No. 3, as recorded in Plat Book 2, Pages 45 through 54, Public Records of Palm Beach County, Florida, and lying in Section 6, Township 44 South, Range 42 East, Palm Beach County, Florida.

3

SHEET 3 OF 4
JUNE 2006



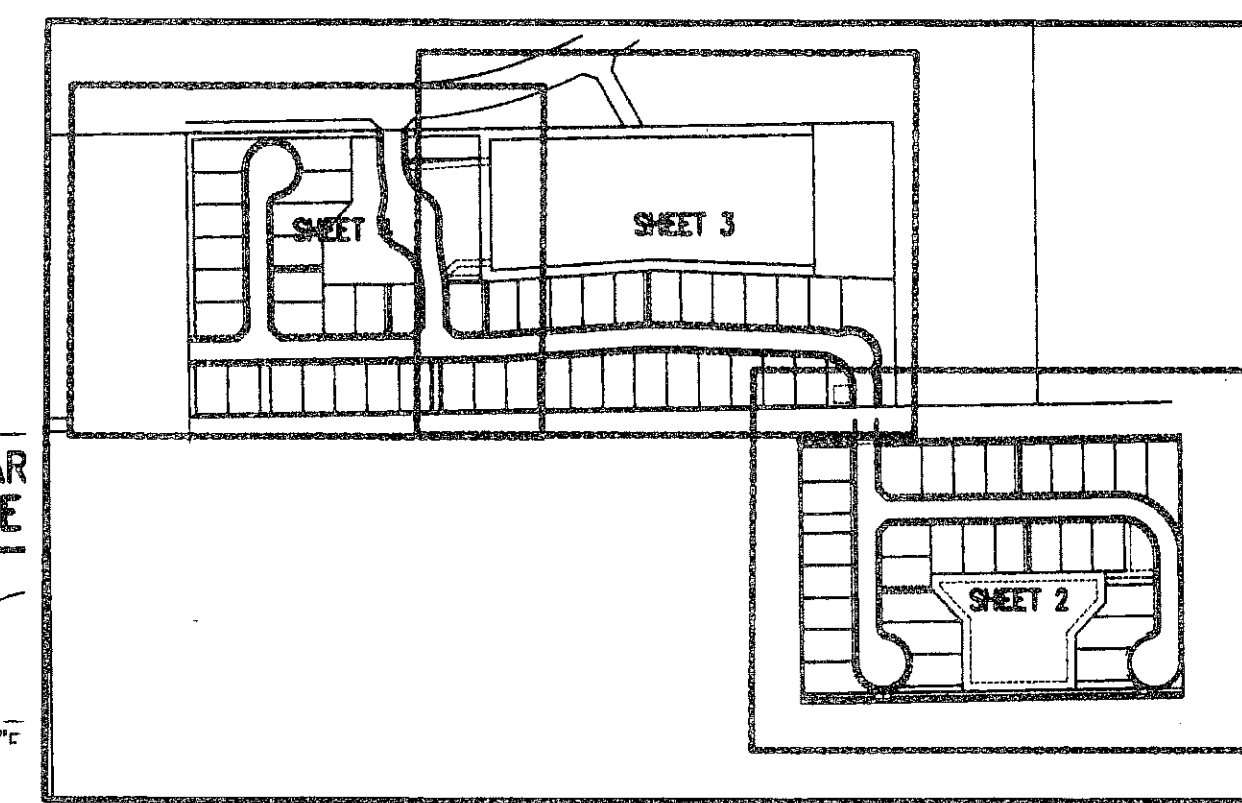
SEE SHEET 4



LEGEND

- U.E. = UTILITY EASEMENT
- D.E. = DRAINAGE EASEMENT
- = DENOTES PERMANENT REFERENCE MONUMENT SET.
- = DENOTES PERMANENT CONTROL POINT.
- CH = CHORD
- R = RADIUS
- L = ARC LENGTH
- Δ = CENTRAL ANGLE
- (N.R.) = NON-RADIAL
- O.R.B. = OFFICIAL RECORD BOOK
- PG. = PAGE
- L.M.E. = LAKE MAINTENANCE EASEMENT
- L.B.E. = LANDSCAPE BUFFER EASEMENT
- L.S.E. = LIFT STATION EASEMENT
- P.B.C.U.E. = PALM BEACH UTILITY COUNTY EASEMENT
- L.M.A.E. = LAKE MAINTENANCE ACCESS EASEMENT

DIAMOND "C" RANCH
PB 99, PG. 173



PIONEER TRAIL, A P.U.D.

SFRN
Engineers • Surveyors • Mappers
1201 BELVEDERE ROAD, WEST PALM BEACH, FLORIDA 33406
PH (561) 855-1151 • FAX (561) 832-9390 • WWW.SFRNINC.COM

DATE	08/12/2006
SCALE	1" = 50'
CAD FILE	4017.01.dwg
SSK PROJECT	4017
DRAWN	SFRN STAFF
CHECKED	G. RAYMAN

SHEET 3/4
JOB NO. 04017.01

PIONEER TRAIL
BLOCK 10
PLAT NO. 3
P.B.F.C.
DATE: 08/12/06
BY: [Signature]