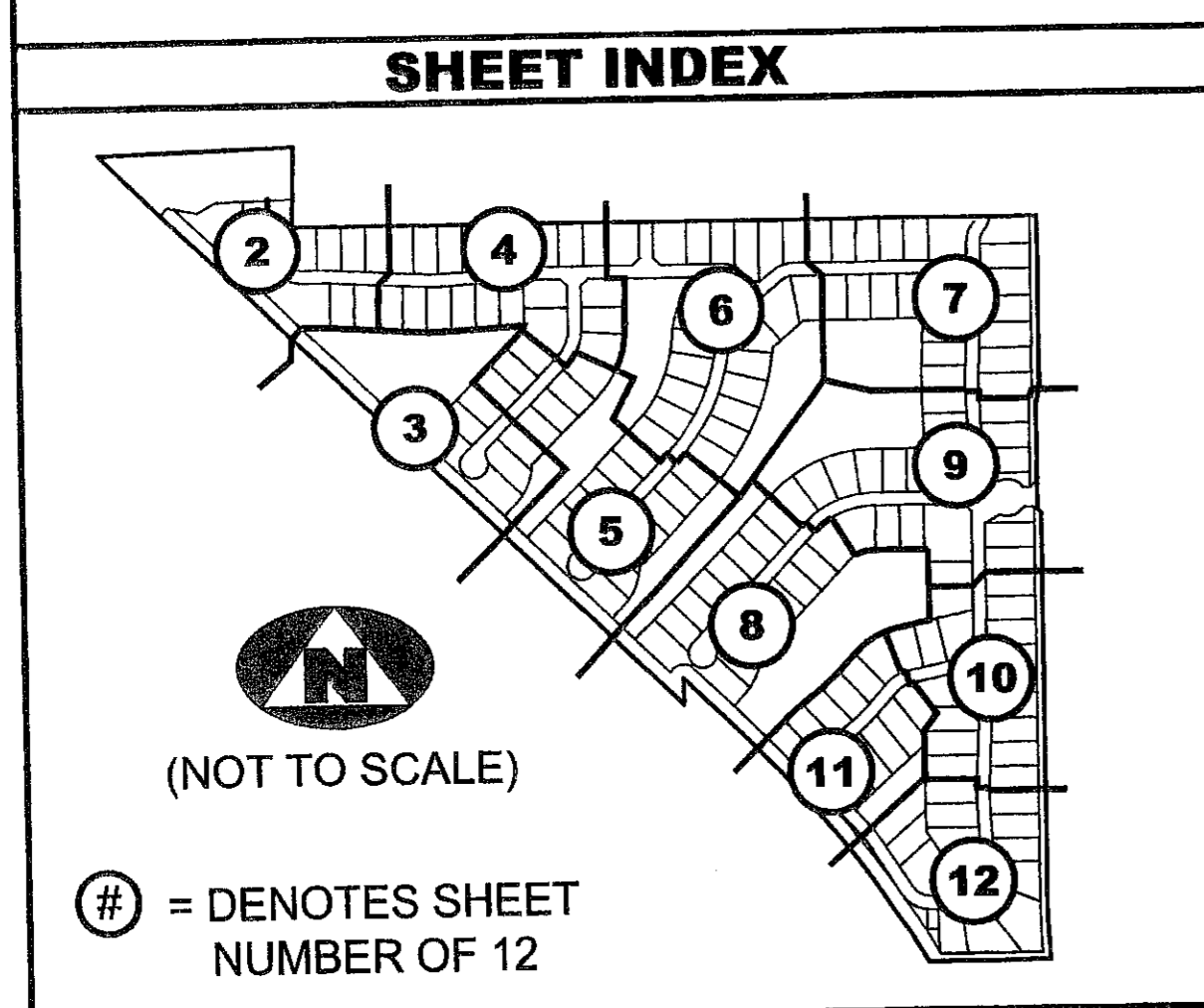
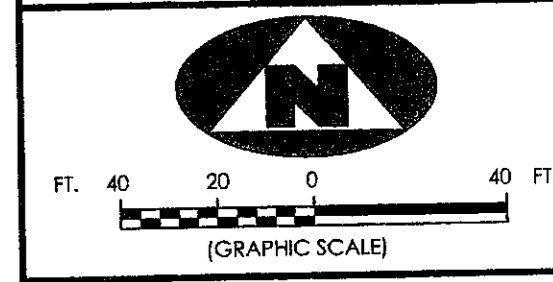
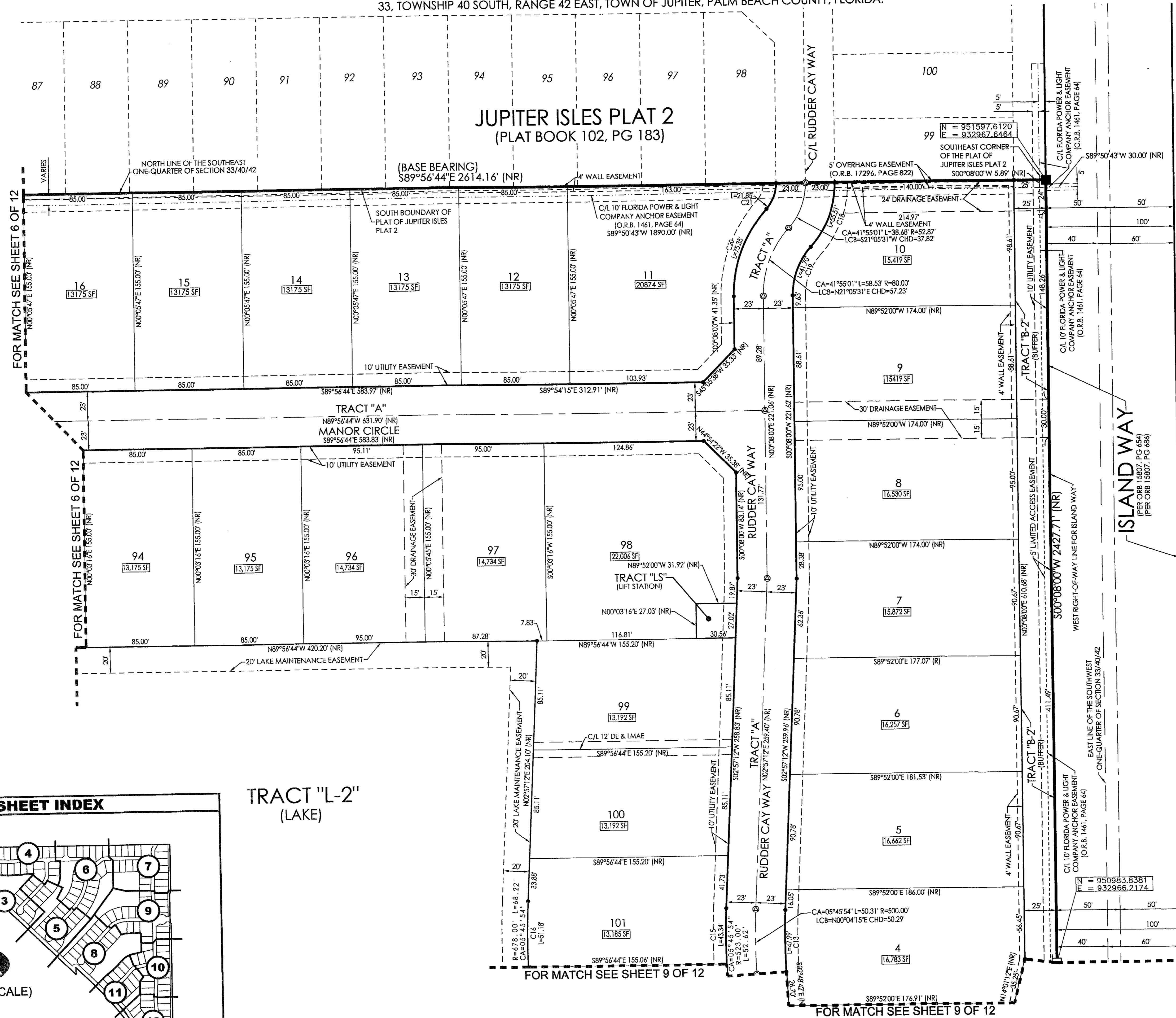


A PARCEL OF LAND LYING IN THE EAST ONE-HALF OF SECTION 32 AND IN THE SOUTHWEST ONE-QUARTER OF SECTION 33, TOWNSHIP 40 SOUTH, RANGE 42 EAST, TOWN OF JUPITER, PALM BEACH COUNTY, FLORIDA.



= DENOTES SHEET NUMBER OF 12

TRACT "L-2" (LAKE)

LEGEND table with symbols and definitions for various survey features like radial lines, centerlines, easements, and monuments.

SURVEYOR'S NOTES: 1. THE BEARING BASE FOR THIS PLAT IS S 89°56'44"E AS SHOWN ALONG THE SOUTH BOUNDARIES OF THE PLAT OF JUPITER ISLES PLAT 2, AND JUPITER ISLES PLAT 3, RECORDED IN PLAT BOOK 102, PAGE 183 AND PLAT BOOK 102, PAGE 188, RESPECTIVELY. 2. IN THOSE INSTANCES WHERE UTILITY OR DRAINAGE STRUCTURES ARE CONSTRUCTED IN CONFLICT WITH THE PLATTED PERMANENT CONTROL POINT POSITION STRADDLERS MONUMENTED AS PERMANENT CONTROL POINTS WILL BE SET TO REFERENCE THE PLATTED POSITION. 3. THIS INSTRUMENT WAS PREPARED BY WM. R. VAN CAMPEN, P.S.M. NO. 2424, IN AND FOR THE OFFICES OF ASSOCIATED LAND SURVEYOR'S, INC., 4152 WEST BLUE HERON BOULEVARD, SUITE 121, RIVIERA BEACH, FLORIDA, 33407

Table with survey file information: FILE: P256LOXPLAT, FB: WO.NO.: P256LOX, SCALE: 1"=40', DATE: 2/27/2005, DWN: KVC, SHEET 7 OF 12

CURVE TABLE with columns for curve number, bearing, radius, length, chord bearing, and chord distance for curves C13 through C21.

ASSOCIATED LAND SURVEYORS, INC. logo and address: 4152 W. BLUE HERON BOULEVARD-SUITE 121 RIVIERA BEACH FLORIDA 33404. Includes phone, fax, and email information.

TROWELL PARK (PLAT BOOK 15, PG 41)

ISLAND WAY (PER ORB 15907, PG 654) (PER ORB 15907, PG 656)

C/L FLORIDA POWER & LIGHT COMPANY ANCHOR EASEMENT (O.R.B. 1461, PAGE 64)

C/L FLORIDA POWER & LIGHT COMPANY ANCHOR EASEMENT (O.R.B. 1461, PAGE 64)

C/L FLORIDA POWER & LIGHT COMPANY ANCHOR EASEMENT (O.R.B. 1461, PAGE 64)

C/L FLORIDA POWER & LIGHT COMPANY ANCHOR EASEMENT (O.R.B. 1461, PAGE 64)

C/L FLORIDA POWER & LIGHT COMPANY ANCHOR EASEMENT (O.R.B. 1461, PAGE 64)

C/L FLORIDA POWER & LIGHT COMPANY ANCHOR EASEMENT (O.R.B. 1461, PAGE 64)