

PERIMETER

SURVEYING & MAPPING
Certificate of Authorization No. LB7264
Prepared by: Jeff S. Hodapp, P.S.M.
951 Broken Sound Parkway, Suite 320
Boca Raton, Florida 33487
Tel: (561) 241-9988
Fax: (561) 241-5182

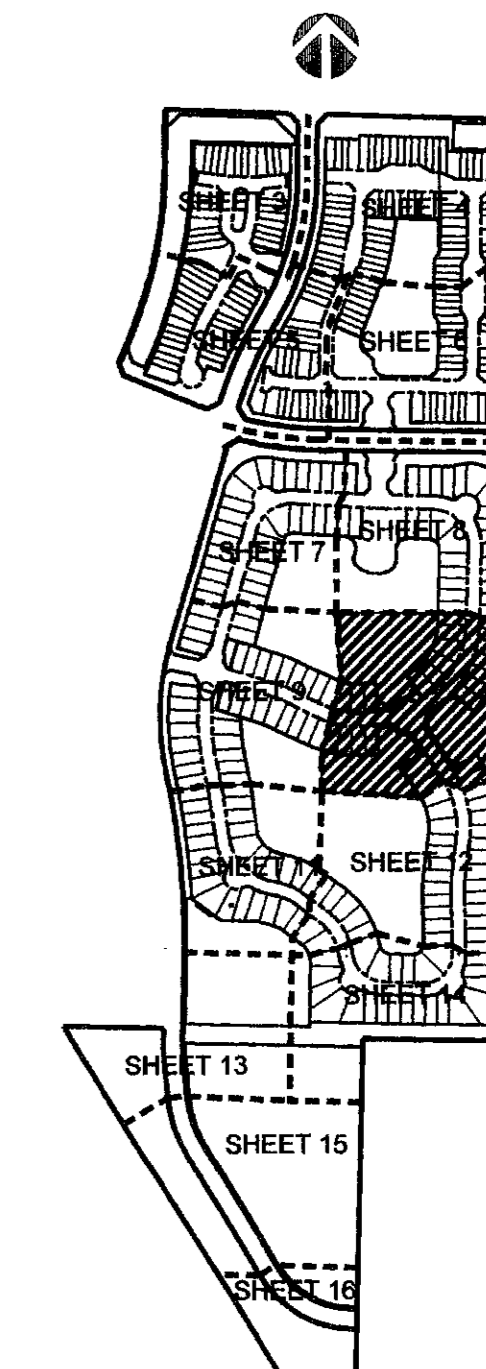
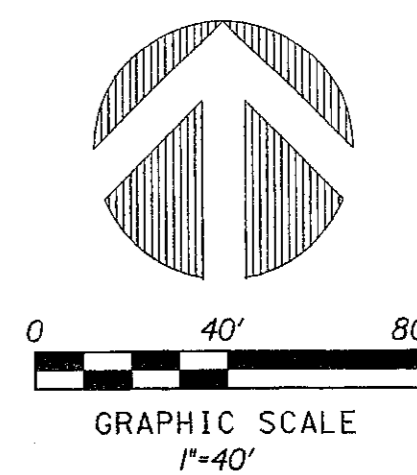
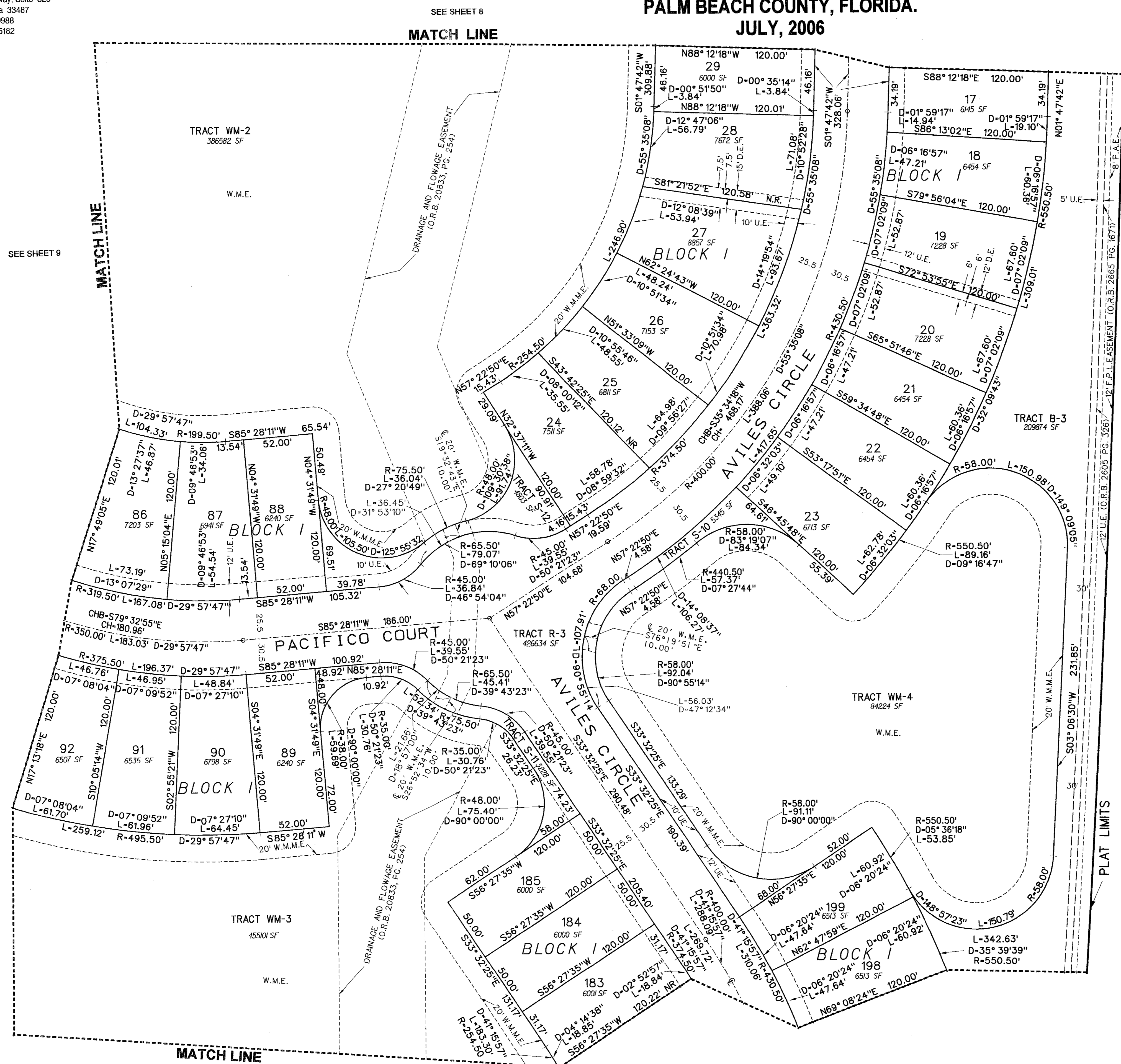
PALOMA, P.U.D.

A PORTION OF THE WEST ONE-HALF OF SECTION 36, TOWNSHIP 41 SOUTH,
RANGE 42 EAST, AND A PORTION OF THE NORTHWEST ONE-QUARTER OF
SECTION 1, TOWNSHIP 42 SOUTH, RANGE 42 EAST, PALM BEACH GARDENS,
PALM BEACH COUNTY, FLORIDA.

JULY, 2006

153

SHEET 10 OF 16



KEY MAP
(NOT TO SCALE)

- LEGEND:**
- SET P.R.M. (UNLESS OTHERWISE NOTED) - 4" X 4" CONC. MON. WITH ALUMINUM DISK STAMPED P.R.M. #LB7264
 - SET P.C.P. #LB7264 CENTERLINE

- ABBREVIATIONS:**
- CH CHORD BEARING
 - CHB CHORD BEARING
 - CONC. CONCRETE
 - COR. CORNER
 - D DELTA (CENTRAL ANGLE)
 - D.E. DRAINAGE EASEMENT
 - L.B. ARC LENGTH
 - L.B.S. LICENSED BUSINESS LANDSCAPE EASEMENT
 - L.S.E. LICENSED SURVEYOR
 - L.S.E. LIFT STATION EASEMENT
 - MON. MONUMENT
 - O.R.B. OFFICIAL RECORDS BOOK
 - N.P.B.C.I.D. NORTHERN PALM BEACH COUNTY IMPROVEMENT DISTRICT
 - N.R. NON-RADIAL
 - P.A.E. PEDESTRIAN ACCESS EASEMENT
 - P.B. PLAT BOOK
 - P.B.C.R. PALM BEACH COUNTY RECORDS
 - P.C. PAGE
 - P.C.P. PERMANENT CONTROL POINT
 - P.O.B. POINT OF BEGINNING
 - P.O.C. POINT OF COMMENCEMENT
 - P.R.M. PERMANENT REFERENCE MONUMENT
 - P.S.M. PROFESSIONAL SURVEYOR & MAPPER
 - P.U.D. PLANNED UNIT DEVELOPMENT
 - RADIUS
 - R.E.E. ROOF ENCROACHMENT EASEMENT
 - R/W RIGHT-OF-WAY
 - S.E. SIDEWALK EASEMENT
 - SEC. SECTION
 - S.F. SQUARE FEET
 - SLE SEWER LINE EASEMENT
 - U.E. UTILITY EASEMENT
 - W.L.E. WATER LINE EASEMENT
 - W.M.E. WATER MANAGEMENT EASEMENT
 - WM.E. WATER MANAGEMENT MAINTENANCE EASEMENT
 - WMAE WATER MANAGEMENT ACCESS EASEMENT

R-22858.31' D-02° 34'14" L-1025.49'

MILITARY TRAIL
(O.R.B. 7483, PG. 1746)
(O.R.B. 815, PG. 581)
(O.R.B. 2353, PG. 1542)

S01° 13'52"W 2723.57'
E LINE SW/4 SEC. 36-41-42

PLAT LIMITS

SEE SHEET 9

SEE SHEET 8

SEE SHEET 12