

TIVOLI ISLES P.U.D. REPLAT OF LOTS 18, 19 & 20

441 - ATLANTIC P.U.D. (CONTROL NO. 04-206)

A REPLAT OF LOTS 18, 19 AND 20, "TIVOLI ISLES P.U.D.", (P.B. 107, PGS. 92-100, P.B.C.R.)
SECTION 18, TOWNSHIP 46 SOUTH, RANGE 42 EAST, PALM BEACH COUNTY, FLORIDA.

AUGUST, 2006

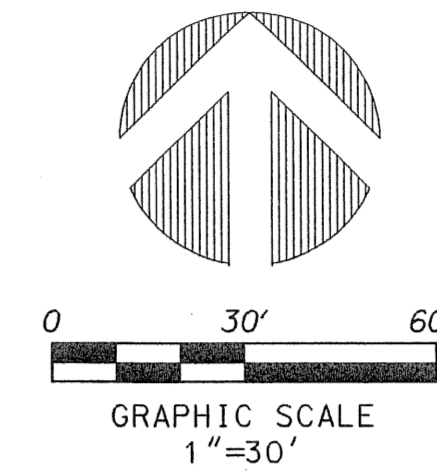
PERIMETER

SURVEYING & MAPPING
Certificate of Authorization No. LB7264
Prepared by: Jeff S. Hodapp, P.S.M.
951 Broken Sound Parkway, Suite 320
Boca Raton, Florida 33487
Tel: (561) 241-9988
Fax: (561) 241-5182

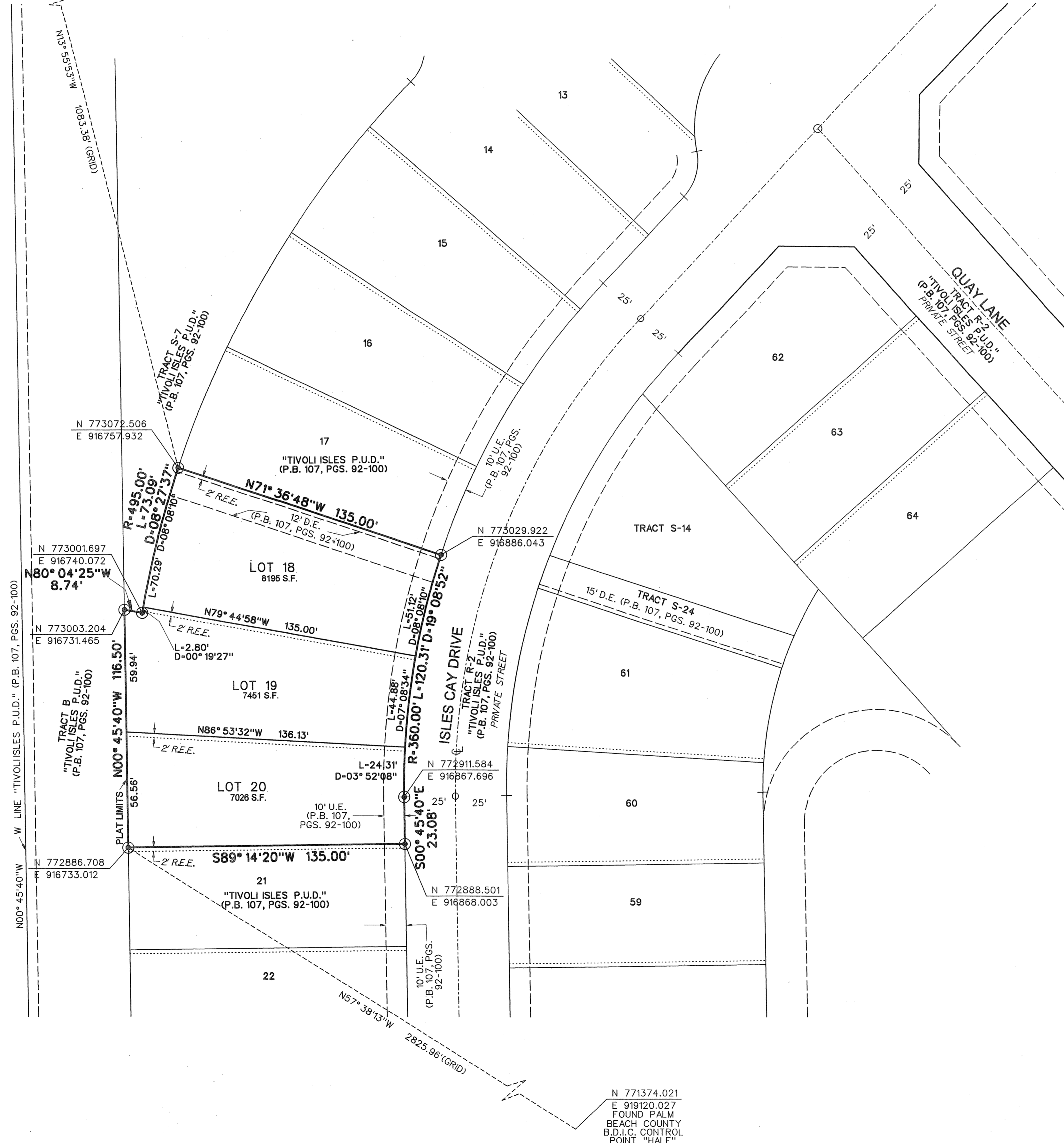
FOUND PALM BEACH COUNTY B.D.I.C. CONTROL POINT "LAUREL"
N 774124.016
E 916497.097

143

SHEET 2 OF 2



L.W.D.D. E-1 CANAL
(D.B. 987, PG. 233)



LEGEND:

- ⊙ SET P.R.M. (UNLESS OTHERWISE NOTED)-4" X4" CONC. MON. WITH ALUMINUM DISK STAMPED P.R.M. • LB7264 P.C.P. CENTERLINE
-
- ⊕

ABBREVIATIONS:

- B.D.I.C. BRASS DISC IN CONCRETE
- CH CHORD
- CHB CHORD BEARING
- CONC. CONCRETE
- COR. CORNER
- D DELTA (CENTRAL ANGLE)
- D.E. DRAINAGE EASEMENT
- L ARCLength
- L.B. LICENSED BUSINESS
- L.E. LANDSCAPE EASEMENT
- L.M.E. LAKE MAINTENANCE EASEMENT
- L.M.A.E. LAKE MAINTENANCE ACCESS EASEMENT
- L.S. LICENSED SURVEYOR
- L.W.D.D. LAKE WORTH DRAINAGE DISTRICT
- MON. MONUMENT
- O.R.B. OFFICIAL RECORDS BOOK
- N.R. NON-RADIAL
- P.B. PLAT BOOK
- P.B.C.R. PALM BEACH COUNTY RECORDS
- PG. PAGE
- P.C.P. PERMANENT CONTROL POINT
- P.O.B. POINT OF BEGINNING
- P.O.C. POINT OF COMMENCEMENT
- P.R.M. PERMANENT REFERENCE MONUMENT
- P.S.M. PROFESSIONAL SURVEYOR & MAPPER
- P.U.D. PLANNED UNIT DEVELOPMENT
- R RADIUS
- R.E.E. ROOF ENCROACHMENT EASEMENT
- R/W RIGHT-OF-WAY
- SEC. SECTION
- S.F. SQUARE FEET
- U.E. UTILITY EASEMENT

TIVOLI ISLES REPLAT OF LOTS 18-20
JOB NO. 143
DATE 08/01/06
DRAWN BY JSH
CHECKED BY JSH
DATE 08/01/06
JOB NO. 143
JOB NAME TIVOLI ISLES REPLAT OF LOTS 18-20
JOB NO. 143
JOB NAME TIVOLI ISLES REPLAT OF LOTS 18-20

N 771374.021
E 919120.027
FOUND PALM BEACH COUNTY B.D.I.C. CONTROL POINT "HALF"