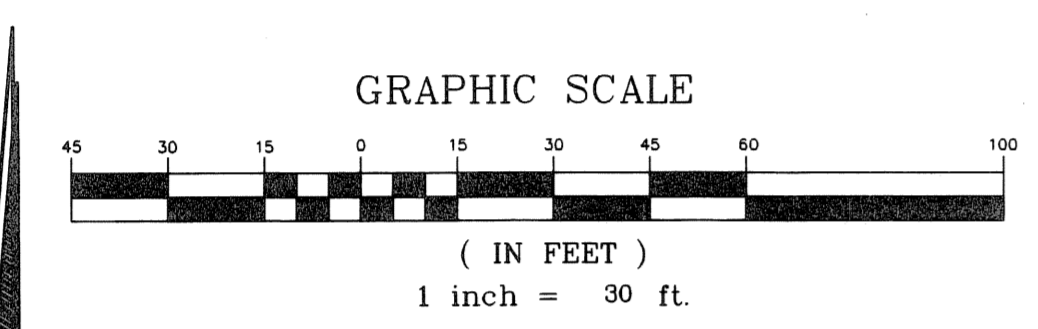
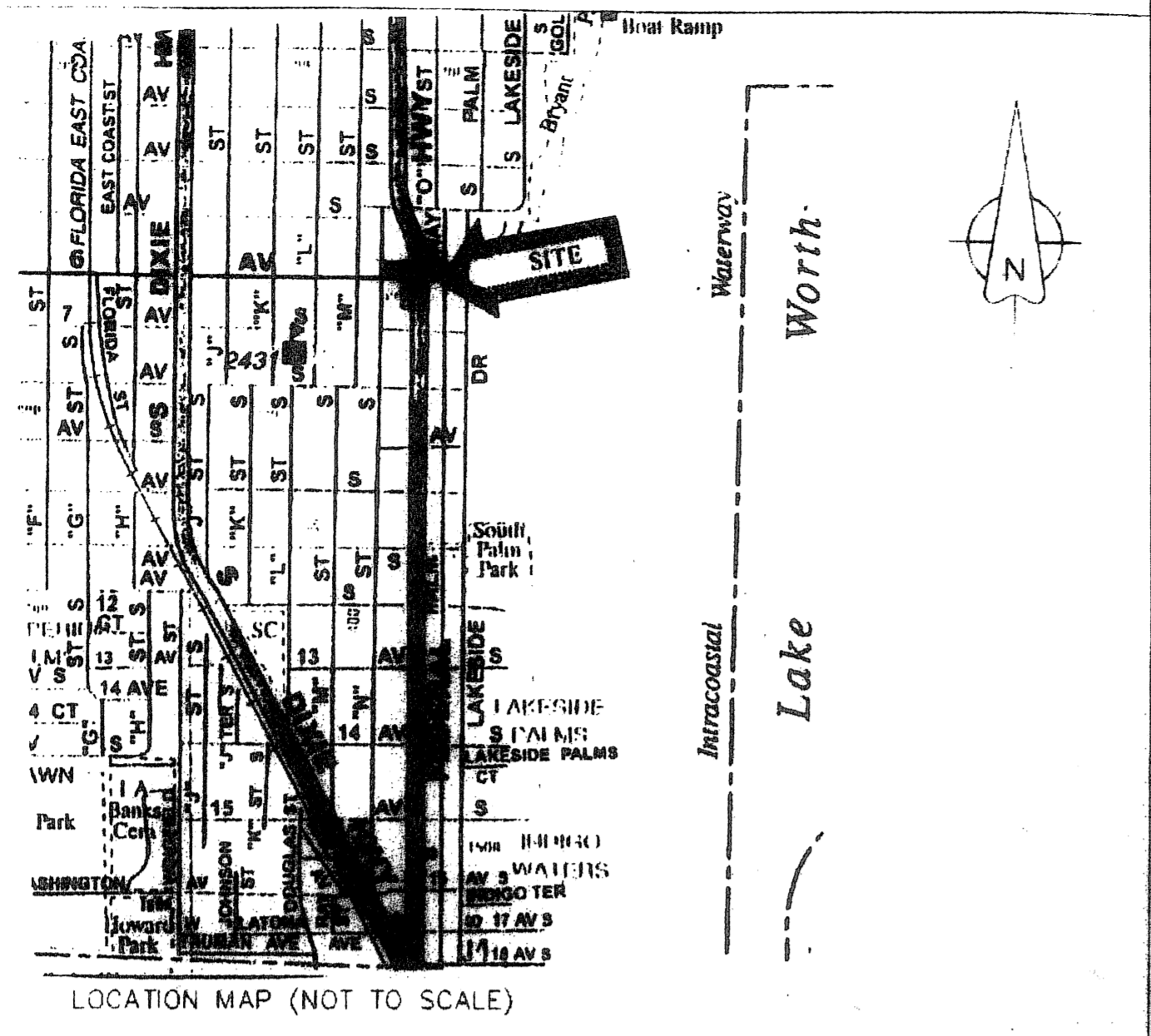


130

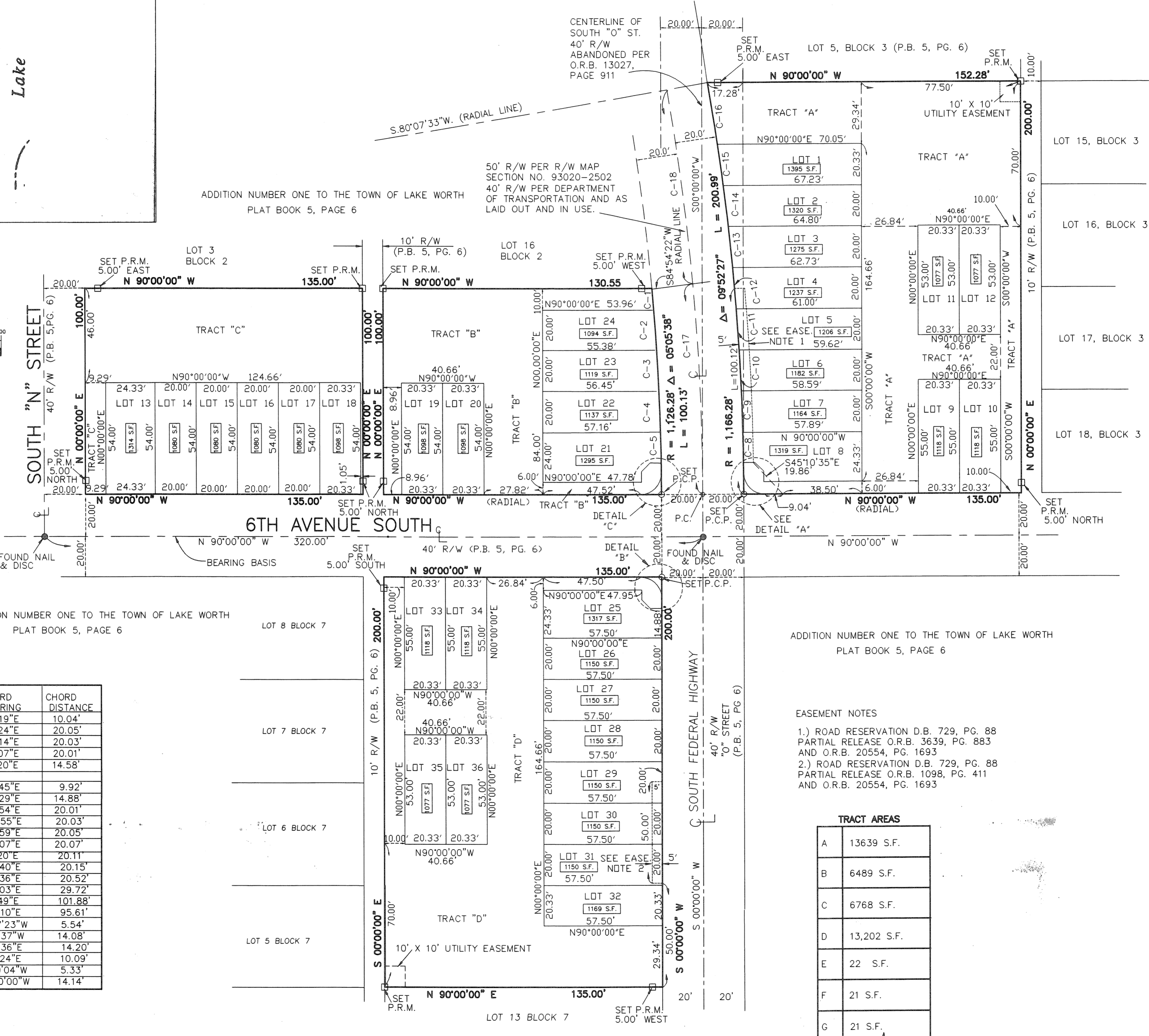
CLOISTERS AT LAKE WORTH

BEING A REPLAT OF LOTS 1, 2, 17, AND 18, BLOCK 2; LOTS 1 THRU 4, BLOCK 3; LOTS 9 THRU 12, BLOCK 7; ADDITION NUMBER ONE TO THE TOWN OF LAKE WORTH, PLAT BOOK 5, PAGE 6, BEING IN SECTION 27, TOWNSHIP 44 SOUTH, RANGE 43 EAST, CITY OF LAKE WORTH, PALM BEACH COUNTY, FLORIDA
MAY 2006

STATE OF FLORIDA
COUNTY OF PALM BEACH
THIS PLAT WAS FILED FOR
RECORD AT _____ M. THIS
____ DAY OF _____
20____ AND DULY RECORDED
IN PLAT BOOK No. _____
ON PAGE _____
SHARON R. BROCK
CLERK CIRCUIT COURT
BY: _____
DEPUTY CLERK



ADDITION NUMBER ONE TO THE TOWN OF LAKE WORTH
PLAT BOOK 5, PAGE 6

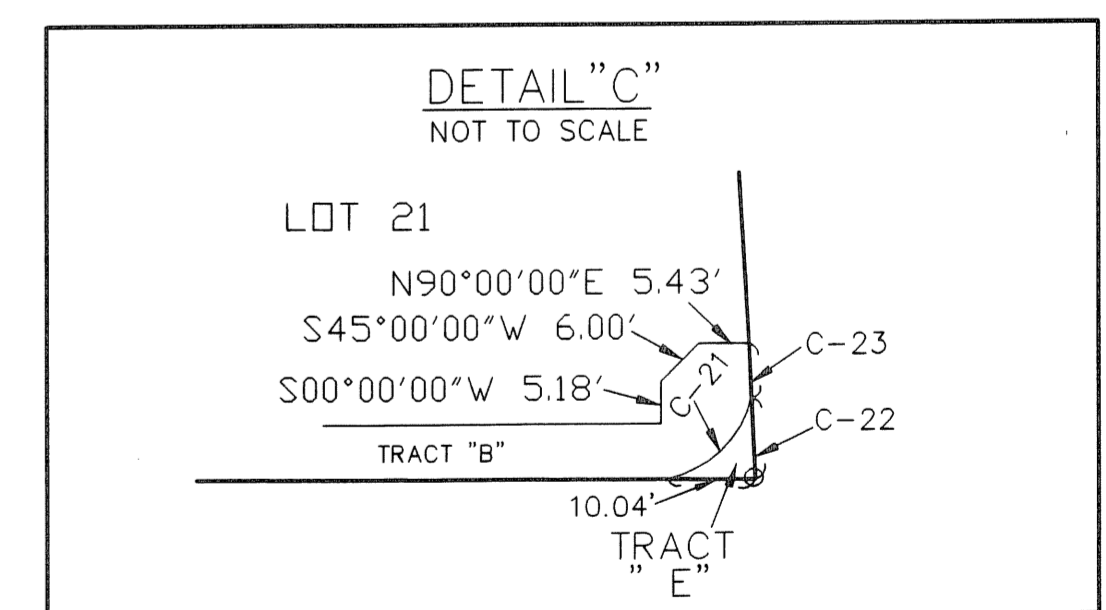
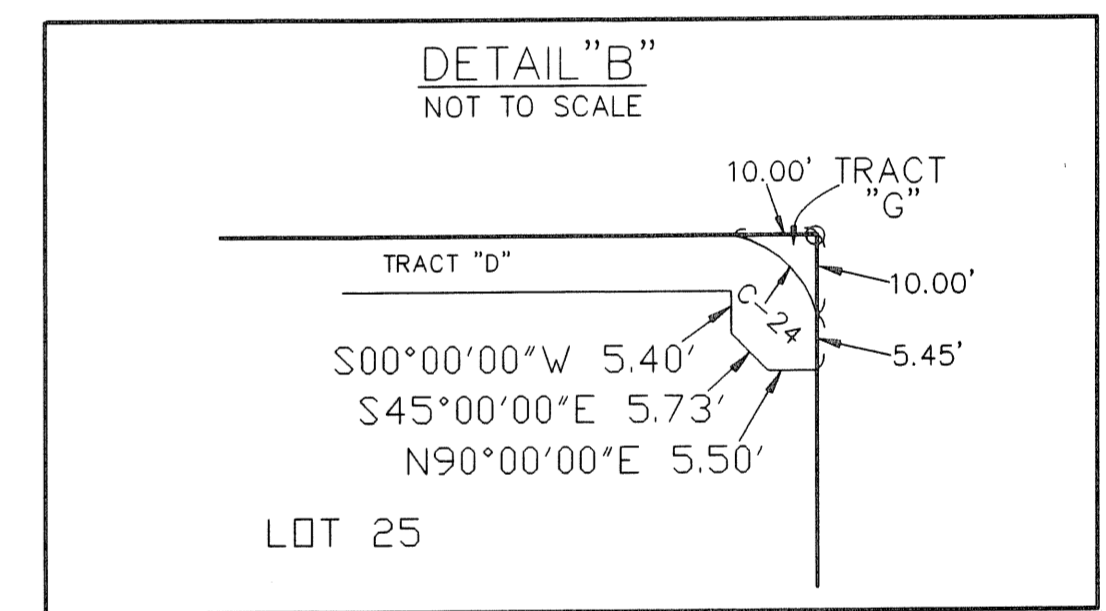
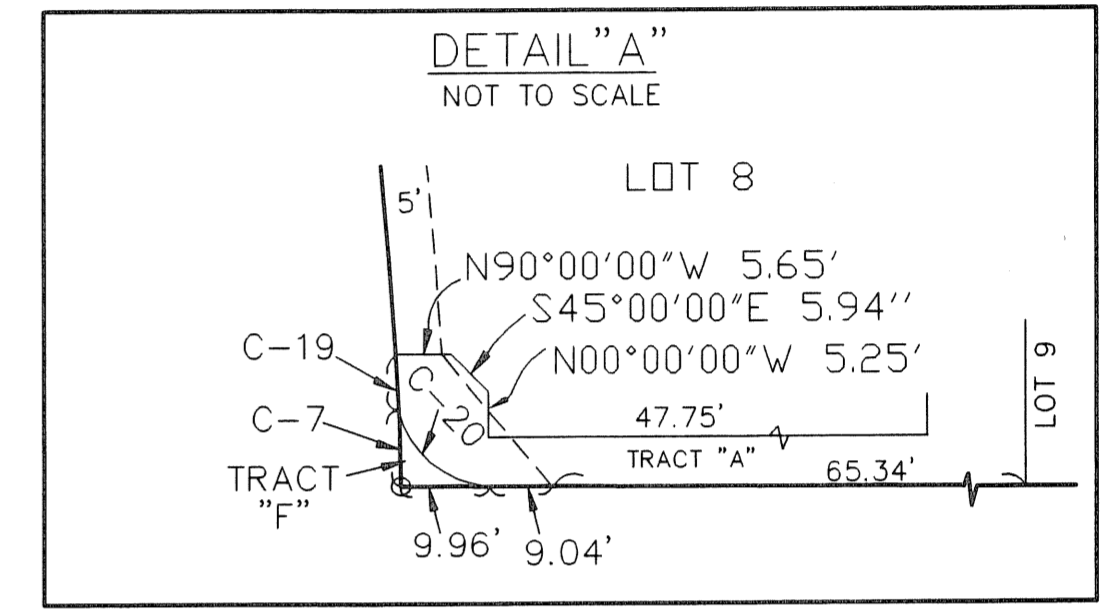


CURVE NUMBER	RADIUS	CENTRAL ANGLE	ARC LENGTH	CHORD BEARING	CHORD DISTANCE
C-1	1126.28'	00°30'38"	10.04'	S04°50'19"E	10.04'
C-2	1126.28'	01°01'12"	20.05'	S04°04'24"E	20.05'
C-3	1126.28'	01°01'08"	20.03'	S03°03'14"E	20.03'
C-4	1126.28'	01°01'05"	20.01'	S02°02'07"E	20.01'
C-5	1126.28'	00°44'30"	14.58'	S01°09'20"E	14.58'
C-6					
C-7	1166.28'	00°29'14"	9.92'	S00°13'45"E	9.92'
C-8	1166.28'	00°43'52"	14.88'	S01°07'29"E	14.88'
C-9	1166.28'	00°58'59"	20.01'	S01°58'54"E	20.01'
C-10	1166.28'	00°59'02"	20.03'	S02°57'55"E	20.03'
C-11	1166.28'	00°59'06"	20.05'	S03°56'59"E	20.05'
C-12	1166.28'	00°59'10"	20.07'	S04°56'07"E	20.07'
C-13	1166.28'	00°59'16"	20.11'	S05°55'20"E	20.11'
C-14	1166.28'	00°59'23"	20.15'	S06°54'40"E	20.15'
C-15	1166.28'	01°00'30"	20.52'	S07°54'36"E	20.52'
C-16	1166.28'	01°27'36"	29.72'	S09°09'03"E	29.72'
C-17	1146.28'	05°05'38"	101.91'	S02°32'49"E	101.88'
C-18	1146.28'	04°46'49"	95.64'	S07°29'10"E	95.61'
C-19	1166.28'	00°16'19"	5.54'	N00°37'23"W	5.54'
C-20	10.00'	89°30'46"	15.62'	N45°14'37"W	14.08'
C-21	10.00'	90°30'48"	15.82'	N44°44'36"E	14.20'
C-22	1126.28'	00°30'48"	10.09'	S00°15'24"E	10.09'
C-23	1126.28'	00°16'17"	5.34'	N00°40'04"W	5.33'
C-24	10.00'	90°00'00"	15.71'	N45°00'00"W	14.14'

TRACT AREAS

A	13639 S.F.
B	6489 S.F.
C	6768 S.F.
D	13,202 S.F.
E	22 S.F.
F	21 S.F.
G	21 S.F.

EASEMENT NOTES
1.) ROAD RESERVATION D.B. 729, PG. 88
PARTIAL RELEASE O.R.B. 3639, PG. 883
AND O.R.B. 20554, PG. 1693
2.) ROAD RESERVATION D.B. 729, PG. 88
PARTIAL RELEASE O.R.B. 1098, PG. 411
AND O.R.B. 20554, PG. 1693



LEGEND:

○	SET P.C.P., 'P.K.' NAIL & DISC STAMPED "M.L.S. L.B. #6838"	O.R.B.	OFFICIAL RECORD BOOK
□	DENOTES SET PERMANENT REFERENCE MONUMENT (P.R.M.)	P.C.	POINT OF CURVATURE
△	4" X 4" CONCRETE MONUMENT STAMPED "M.L.S. L.B. #6838"	P.B.	PLAT BOOK
∠	CENTRAL ANGLE	PG.	PAGE
⊕	DENOTES CENTERLINE	P.C.P.	DENOTES PERMANENT CONTROL POINT
EASE.	EASEMENT	R	RADIUS
L	ARC LENGTH	R/W	RIGHT OF WAY
		S.F.	SQUARE FEET

SCALE AS NOTED	MILLER LAND SURVEYING 1121 LAKE AVE. LAKE WORTH, FL. 561-586-2669	REFERENCES X-999 P-87/13
DR. D.M.E.		JOB NO. Y042736
FIELD M.M.		L-1617-B
DATE MAY 2005		