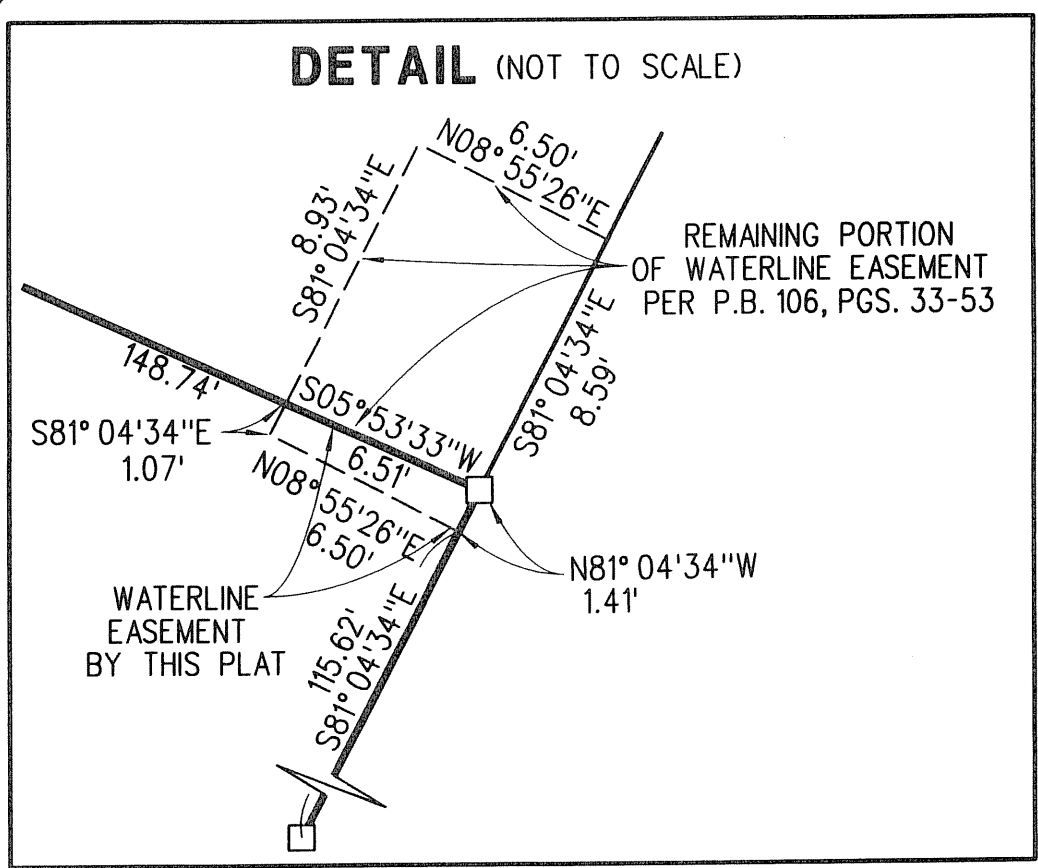
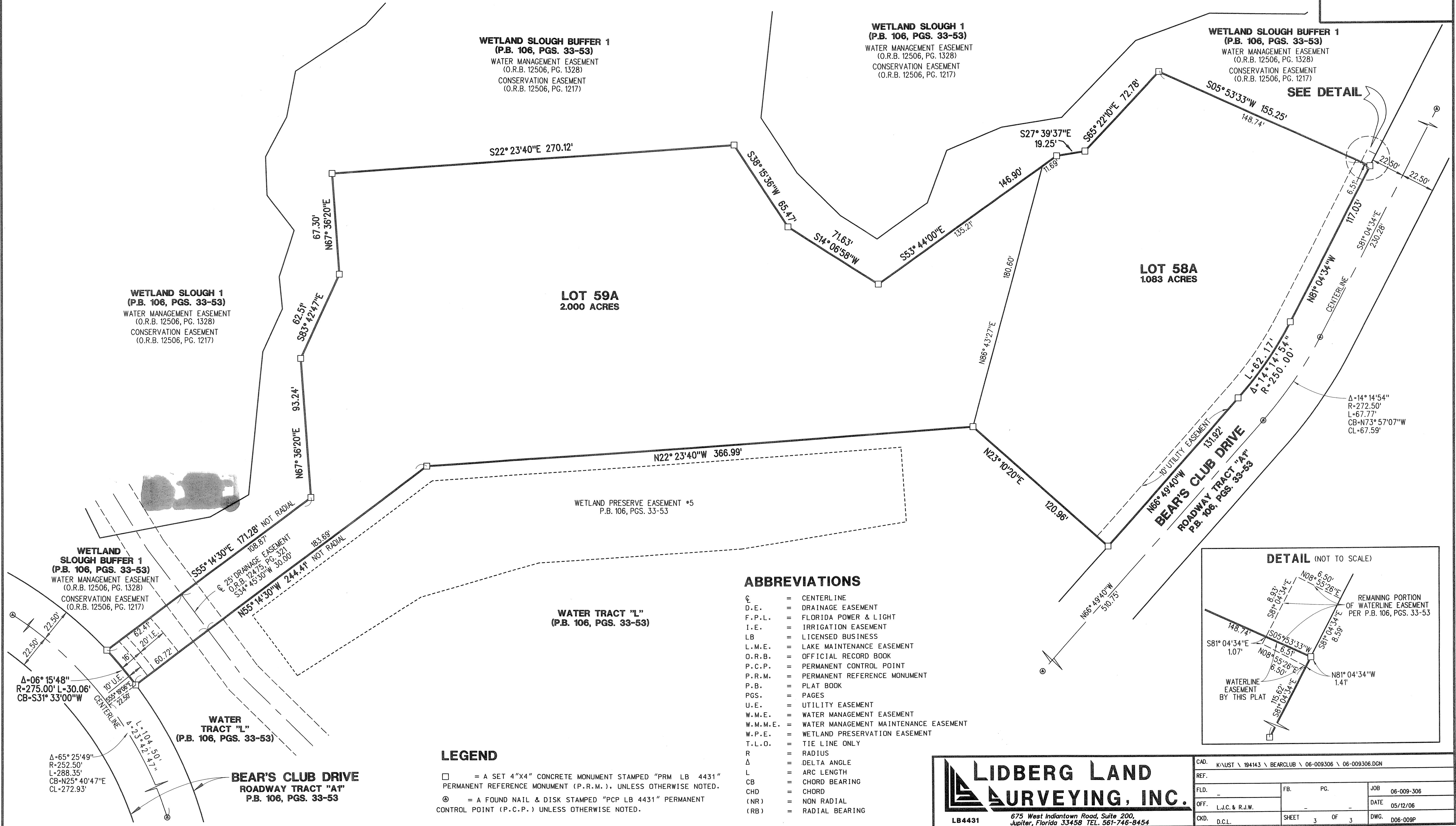
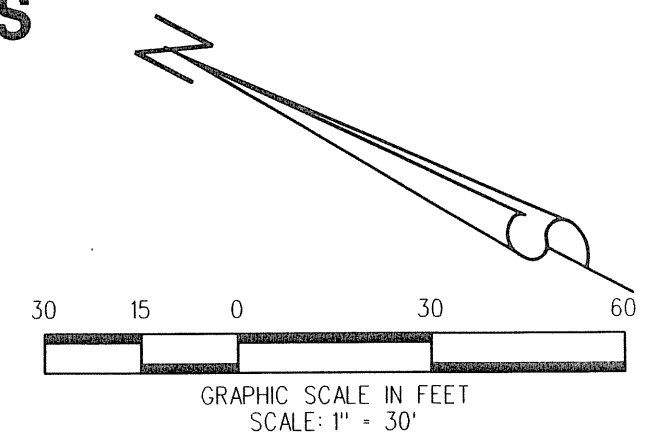


BEAR'S CLUB REPLAT OF LOTS 58 AND 59

BEING A REPLAT OF LOTS 58 AND 59, BEAR'S CLUB REPLAT, A P.U.D., RECORDED IN PLAT BOOK 106, PAGES 33 THROUGH 53, PUBLIC RECORDS OF PALM BEACH COUNTY, FLORIDA. LYING IN SECTION 19, TOWNSHIP 41 SOUTH, RANGE 43 EAST, TOWN OF JUPITER, PALM BEACH COUNTY, FLORIDA

126

SEPTEMBER 2006 SHEET 3 OF 3



ABBREVIATIONS

- CL = CENTERLINE
- D.E. = DRAINAGE EASEMENT
- F.P.L. = FLORIDA POWER & LIGHT
- I.E. = IRRIGATION EASEMENT
- LB = LICENSED BUSINESS
- L.M.E. = LAKE MAINTENANCE EASEMENT
- O.R.B. = OFFICIAL RECORD BOOK
- P.C.P. = PERMANENT CONTROL POINT
- P.R.M. = PERMANENT REFERENCE MONUMENT
- P.B. = PLAT BOOK
- PGS. = PAGES
- U.E. = UTILITY EASEMENT
- W.M.E. = WATER MANAGEMENT EASEMENT
- W.M.M.E. = WATER MANAGEMENT MAINTENANCE EASEMENT
- W.P.E. = WETLAND PRESERVATION EASEMENT
- T.L.O. = TIE LINE ONLY
- R = RADIUS
- Δ = DELTA ANGLE
- L = ARC LENGTH
- CB = CHORD BEARING
- CHD = CHORD
- (NR) = NON RADIAL
- (RB) = RADIAL BEARING

LEGEND

- = A SET 4"x4" CONCRETE MONUMENT STAMPED "PRM LB 4431" PERMANENT REFERENCE MONUMENT (P.R.M.), UNLESS OTHERWISE NOTED.
- ⊙ = A FOUND NAIL & DISK STAMPED "PCP LB 4431" PERMANENT CONTROL POINT (P.C.P.) UNLESS OTHERWISE NOTED.

LIDBERG LAND SURVEYING, INC.
 675 West Indiantown Road, Suite 200,
 Jupiter, Florida 33458 TEL. 561-746-8454
 LB4431

CAD: K\AUST \ 194143 \ BEARCLUB \ 06-009306 \ 06-009306.DGN			
REF.			
FLD.		PG.	JOB 06-009-306
OFF.	L.J.C. & R.J.W.		DATE 05/12/06
CKD.	D.C.L.	SHEET 3 OF 3	DWG. 006-009P