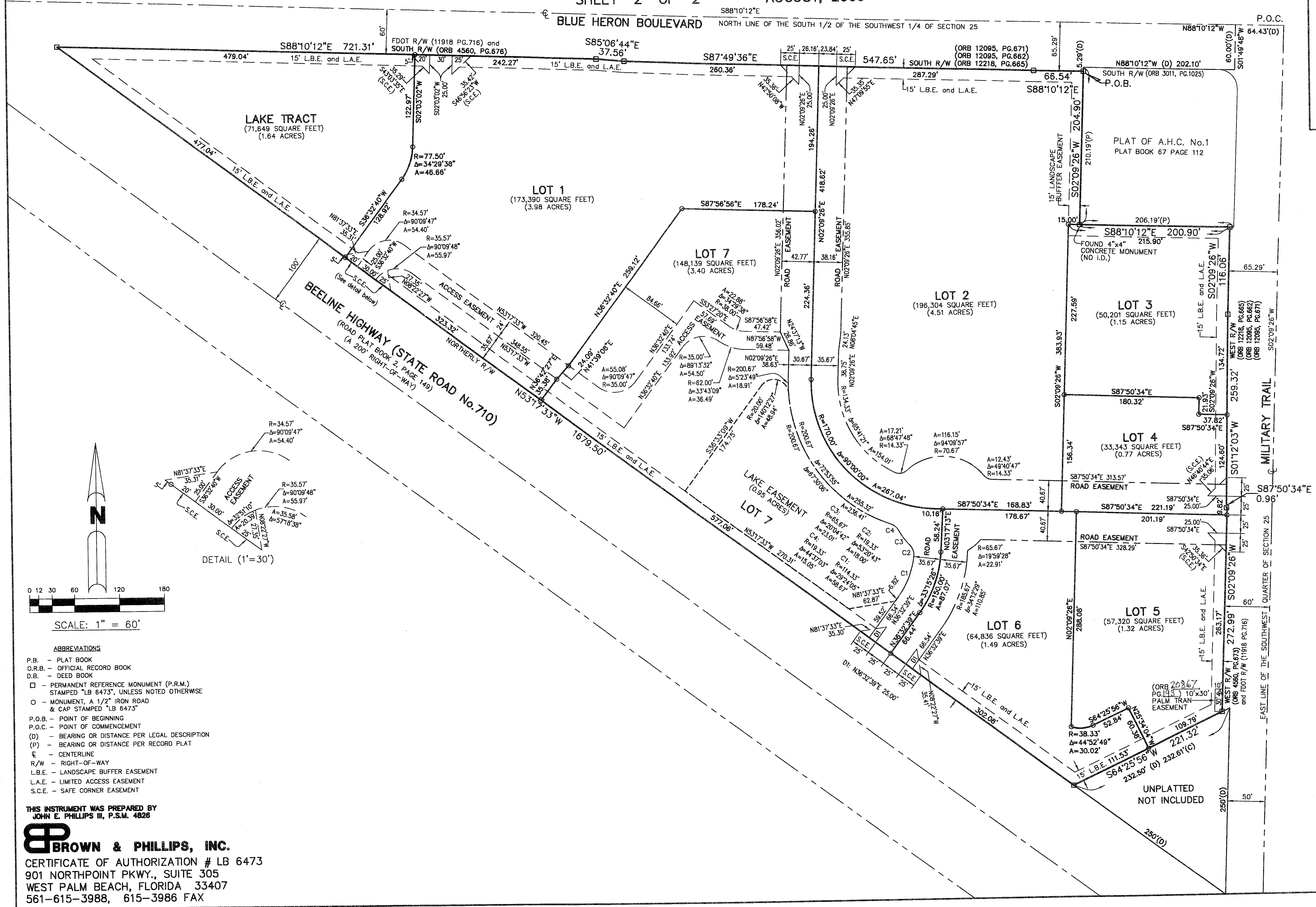


# TRIANGLE COMMERCE CENTER

LYING IN THE SOUTHWEST 1/4 OF SECTION 25, TOWNSHIP 42 SOUTH, RANGE 42 EAST,  
CITY OF RIVIERA BEACH, PALM BEACH COUNTY, FLORIDA  
SHEET 2 OF 2 AUGUST, 2006

100



- ABBREVIATIONS**
- P.B. - PLAT BOOK
  - O.R.B. - OFFICIAL RECORD BOOK
  - D.B. - DEED BOOK
  - - PERMANENT REFERENCE MONUMENT (P.R.M.) STAMPED "LB 6473", UNLESS NOTED OTHERWISE
  - - MONUMENT, A 1/2" IRON ROAD & CAP STAMPED "LB 6473"
  - P.O.B. - POINT OF BEGINNING
  - P.O.C. - POINT OF COMMENCEMENT
  - (D) - BEARING OR DISTANCE PER LEGAL DESCRIPTION
  - (P) - BEARING OR DISTANCE PER RECORD PLAT
  - ⊕ - CENTERLINE
  - R/W - RIGHT-OF-WAY
  - L.B.E. - LANDSCAPE BUFFER EASEMENT
  - L.A.E. - LIMITED ACCESS EASEMENT
  - S.C.E. - SAFE CORNER EASEMENT

THIS INSTRUMENT WAS PREPARED BY  
JOHN E. PHILLIPS III, P.S.M. 4828

**BROWN & PHILLIPS, INC.**  
CERTIFICATE OF AUTHORIZATION # LB 6473  
901 NORTHPOINT PKWY., SUITE 305  
WEST PALM BEACH, FLORIDA 33407  
561-615-3988, 615-3986 FAX

PROJ. No. 06-033  
SCALE: 1"=60'  
DATE: 8/2/2006  
SHEET 2 OF 2