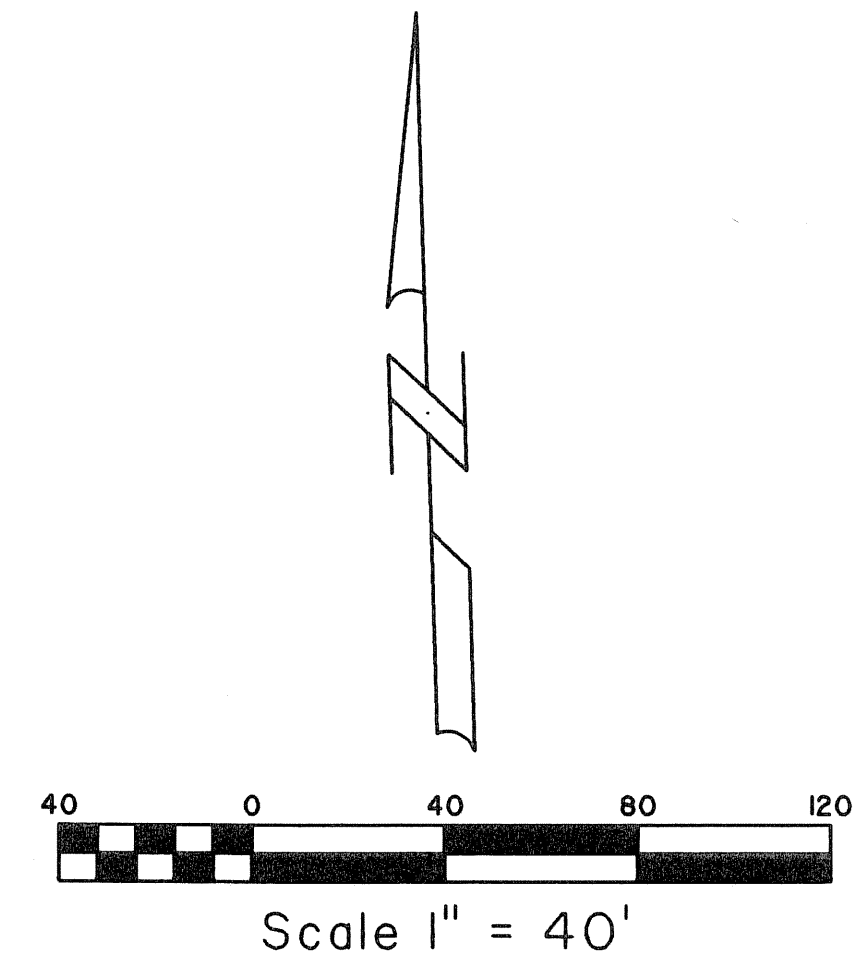
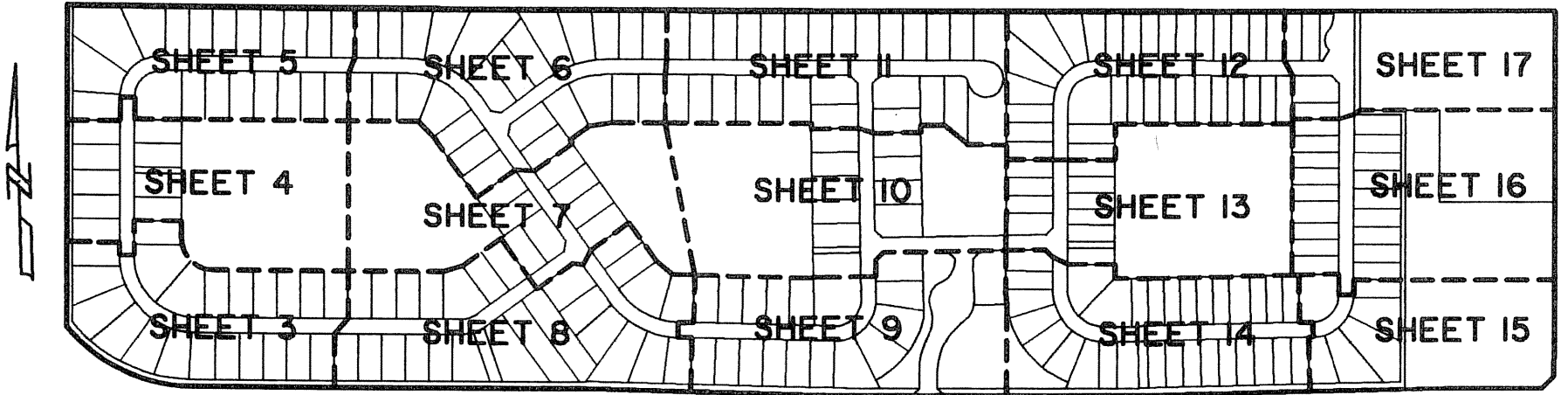


LANIER PROPERTY

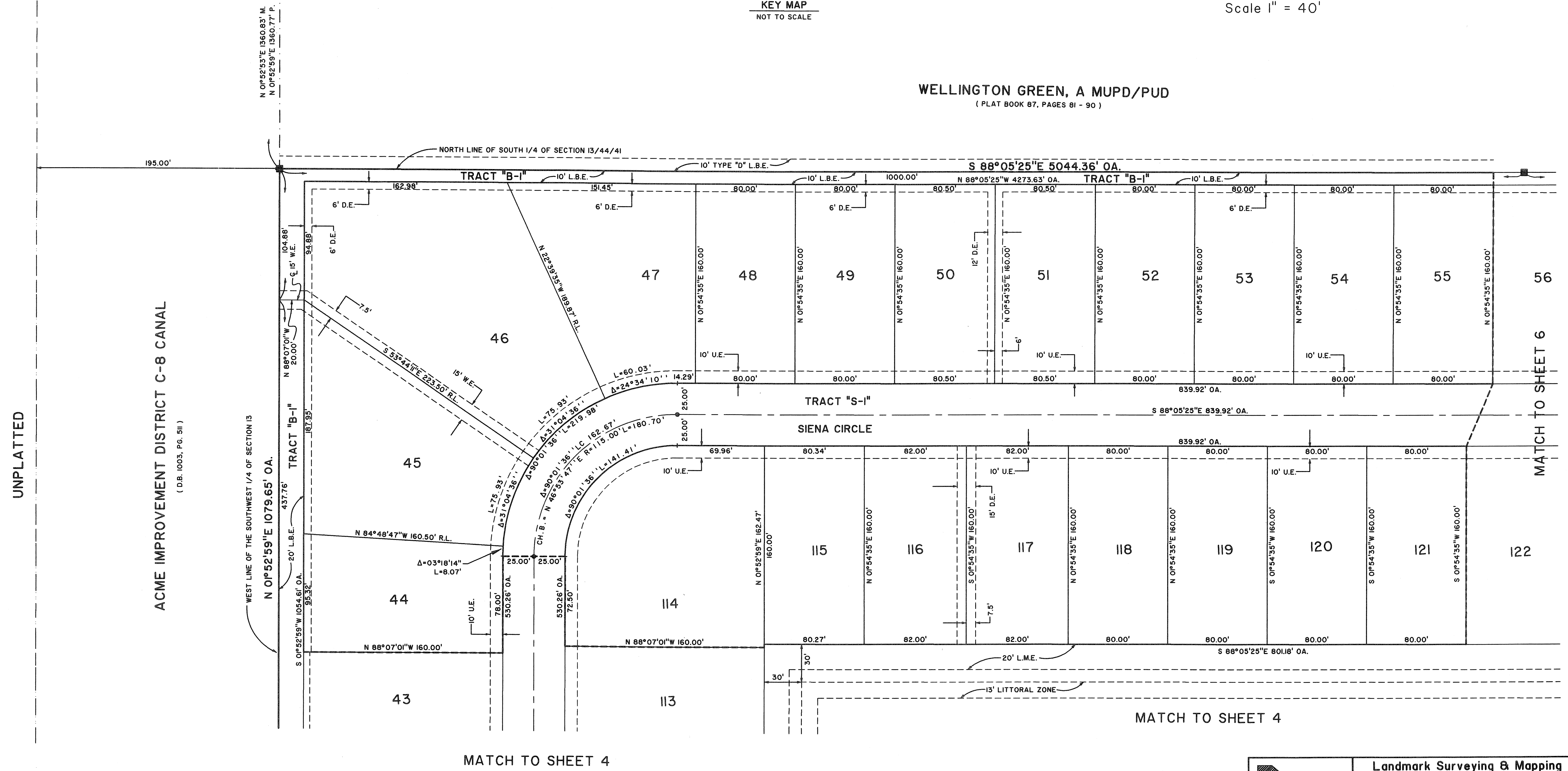
LYING IN SECTION 13, TOWNSHIP 44 SOUTH, RANGE 41 EAST,
VILLAGE OF WELLINGTON, PALM BEACH COUNTY, FLORIDA.
SHEET 5 OF 17 MARCH, 2006

STATE OF FLORIDA 55
COUNTY OF PALM BEACH
THIS PLAT WAS FILED FOR RECORD AT _____
M., THIS _____ DAY OF _____ 2006
AND DULY RECORDED IN PLAT BOOK NO. _____
ON PAGE _____
SHARON R. BOCK,
CLERK AND COMPTROLLER,
PALM BEACH COUNTY
BY _____ D.C.



WELLINGTON GREEN, A MUPD/PUD

(PLAT BOOK 87, PAGES 81 - 90)



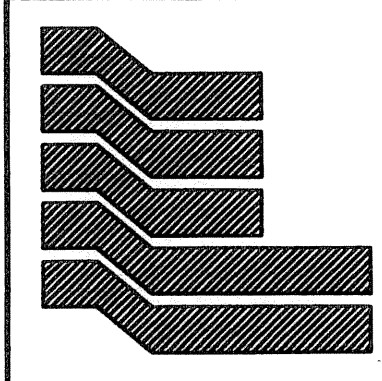
UNPLATTED

ACME IMPROVEMENT DISTRICT C-8 CANAL
(D.B. 1003, PG. 511)

MATCH TO SHEET 4

MATCH TO SHEET 4

MATCH TO SHEET 6



Landmark Surveying & Mapping Inc.
1850 Forest Hill Boulevard
Ph. (561) 433-5405 Suite 100 W.P.B. Florida
LB # 4396

LANIER PROPERTY