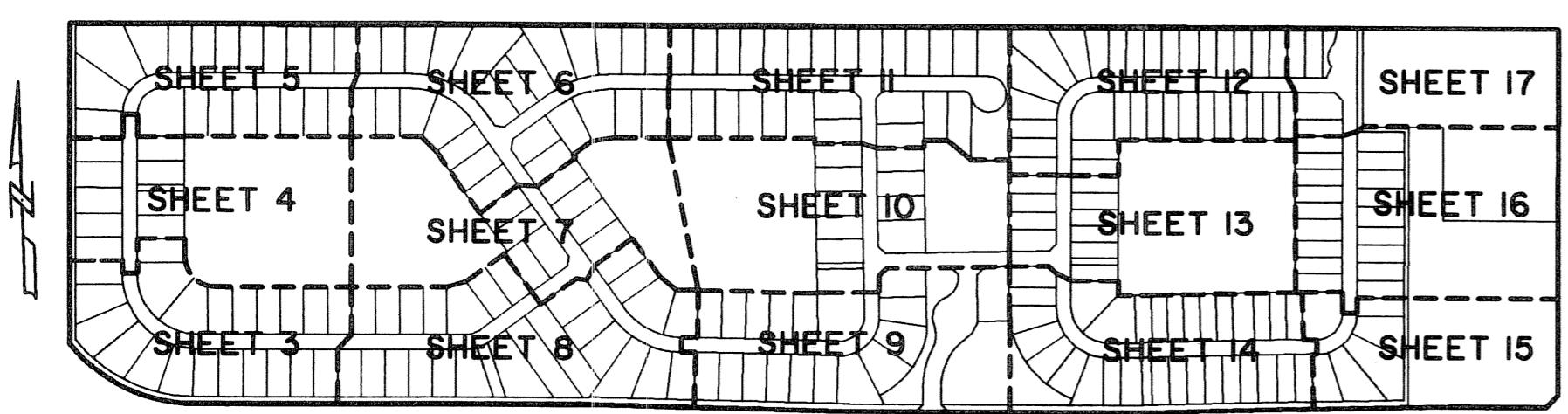


LANIER PROPERTY

LYING IN SECTION 13, TOWNSHIP 44 SOUTH, RANGE 41 EAST,
VILLAGE OF WELLINGTON, PALM BEACH COUNTY, FLORIDA.
SHEET 4 OF 17 MARCH, 2006



KEY MAP
NOT TO SCALE



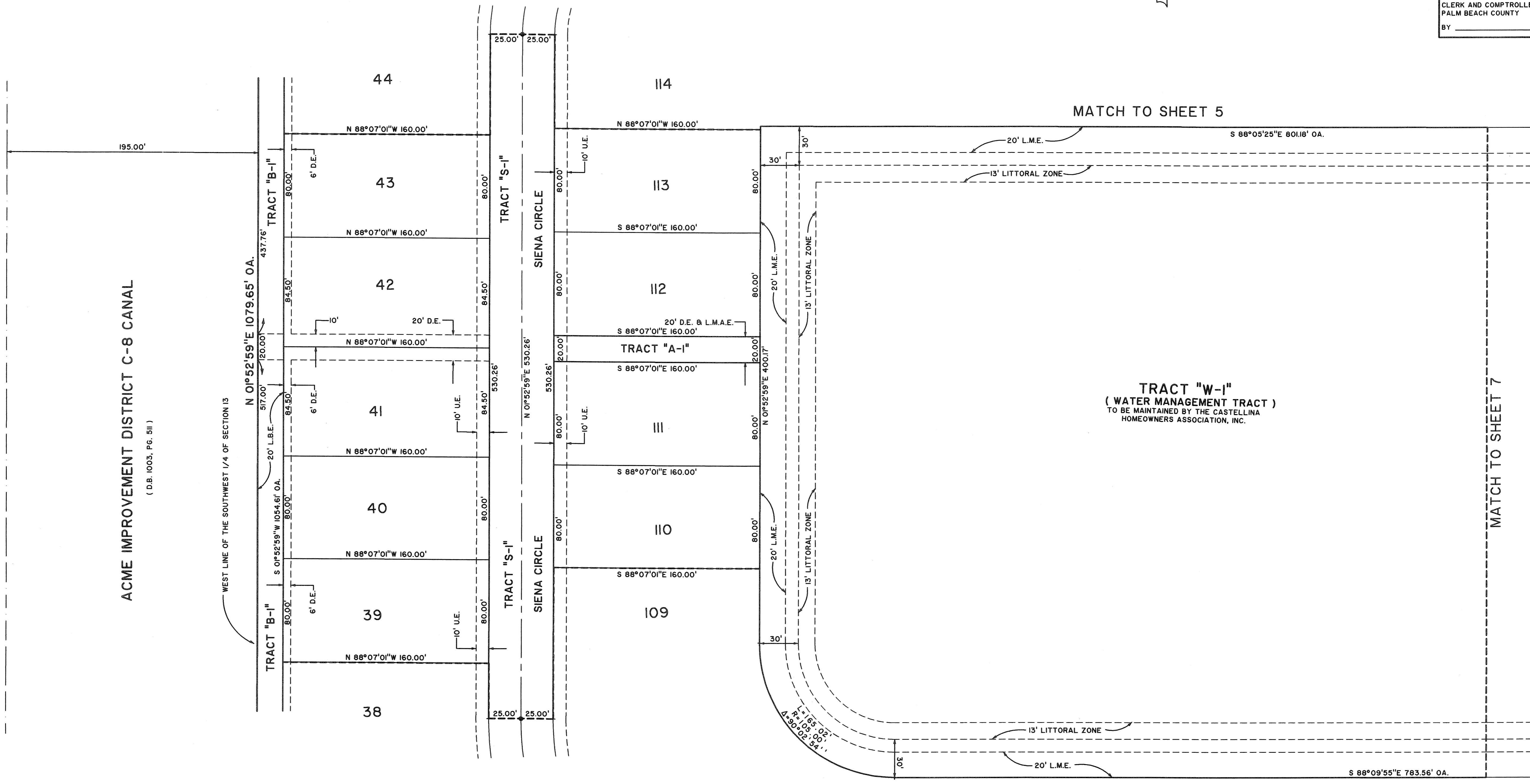
STATE OF FLORIDA SS
COUNTY OF PALM BEACH
THIS PLAT WAS FILED FOR RECORD AT _____
M., THIS _____ DAY OF _____ 2006
AND DULY RECORDED IN PLAT BOOK NO. _____
ON PAGE _____
SHARON R. BOCK,
CLERK AND COMPTROLLER,
PALM BEACH COUNTY
BY _____ D.C.

MATCH TO SHEET 5

MATCH TO SHEET 5

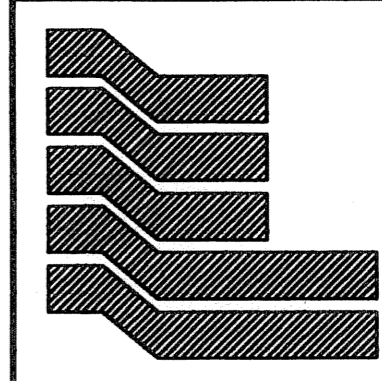
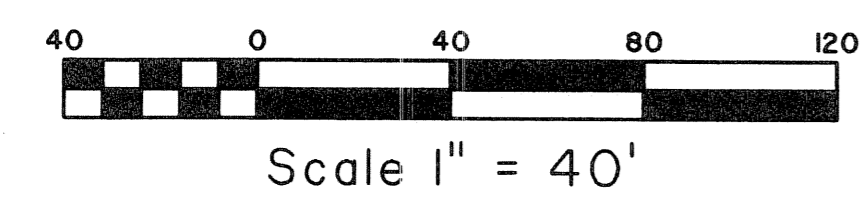
UNPLATTED

ACME IMPROVEMENT DISTRICT C-8 CANAL
(D.B. 1003, P.G. 511)



MATCH TO SHEET 3

MATCH TO SHEET 3



Landmark Surveying & Mapping Inc.
1850 Forest Hill Boulevard
Ph. (561) 433-5405 Suite 100 W.P.B. Florida
LB # 4396

LANIER PROPERTY