

PERIMETER
SURVEYING & MAPPING

Prepared by: Jeff S. Hodapp, P.S.M.
Certificate of Authorization No. LB7264
951 Broken Sound Parkway, Suite 320
Boca Raton, Florida 33487
Tel: (561) 241-9988
Fax: (561) 241-8182

ABBREVIATIONS:

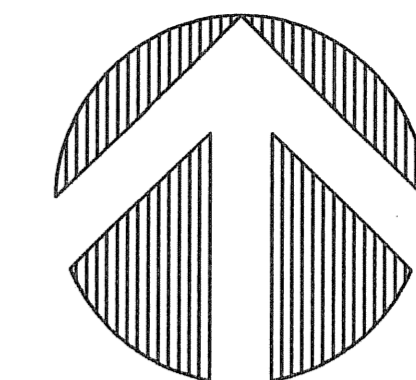
AC.	ACRES
CH.	CHORD BEARING
CHB.	CONCRETE
CONC.	CORNER
COR.	DELTA (CENTRAL ANGLE)
D.E.	DRAINAGE EASEMENT
L.A.E.	LIMITED ACCESS EASEMENT
L.B.	LICENSED BUSINESS
L.B.E.	LANDSCAPE BUFFER EASEMENT
L.M.E.	LAKE MAINTENANCE EASEMENT
L.S.	LICENSED SURVEYOR
L.S.E.D.	LIFT STATION EASEMENT
L.W.D.D.	LAKE WORTH DRAINAGE DISTRICT
MON.	MONUMENT
O.R.B.	OFFICIAL RECORDS BOOK
N.R.	NON-RADIAL
P.B.	PLAT BOOK
P.B.C.R.	PALM BEACH COUNTY RECORDS
P.C.	PAGE
P.C.P.	PERMANENT CONTROL POINT
P.O.B.	POINT OF BEGINNING
P.O.C.	POINT OF COMMENCEMENT
P.P.R.M.	PERMANENT REFERENCE MONUMENT
P.S.M.	PROFESSIONAL SURVEYOR & MAPPER
P.U.D.	PLANNED UNIT DEVELOPMENT
R.	RADIUS
R.R.W.	RIGHT-OF-WAY
R.U.E.	ROAD AND UTILITY EASEMENT
SEC.	SECTION
S.F.	SQUARE FEET
U.E.	UTILITY EASEMENT

LEGEND:

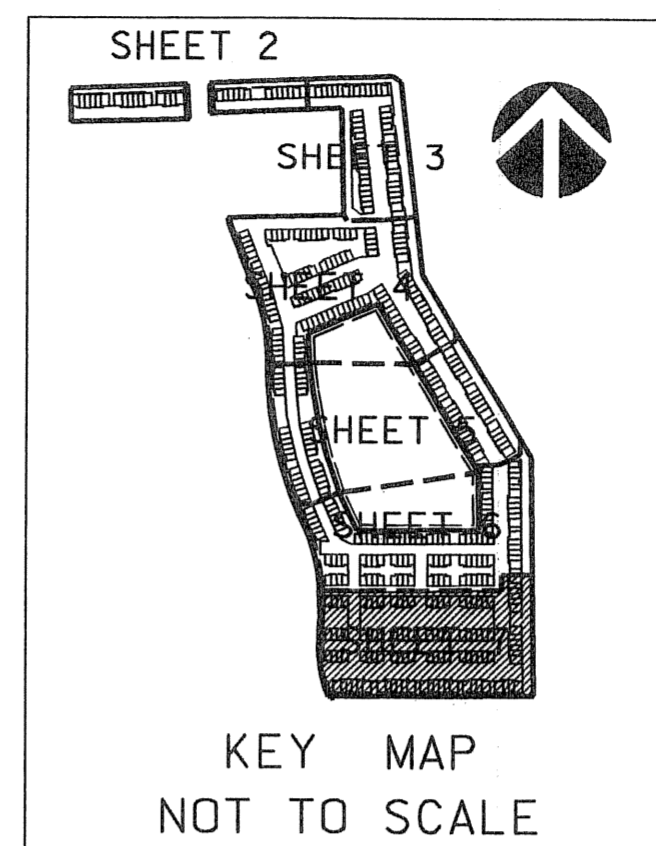
	SET P.R.M. (UNLESS OTHERWISE NOTED) - 4" DIAMETER
	CONC. MON. WITH ALUMINUM DISK
	STAMPED *LB7264
	P.C.P. CENTERLINE

CORTINA P.U.D.

A REPLAT OF PARCELS "SMU-PARCEL 1 RESIDENTIAL" AND "SMU-PARCEL 2 RESIDENTIAL" "BOYNTON TOWN CENTER, A P.C.D." (P.B. 106, PGS. 144-151, P.B.C.R.) IN SECTION 17, TOWNSHIP 45 SOUTH, RANGE 43, EAST, CITY OF BOYNTON BEACH, PALM BEACH COUNTY, FLORIDA. JUNE, 2006



GRAPHIC SCALE
1" = 30'



LAKE WORTH DRAINAGE DISTRICT
CANAL E-4
(180' CANAL R/W)
(PER P.B. 46, PAGES 81-83, P.B.C.R.)

RENAISSANCE COMMONS BOULEVARD
SPINE ROAD CENTER, A P.C.D.
(P.B. 106, PGS. 144-151)

R=646.50'
L=5.57'
D=00° 29' 36"

40' PEDESTRIAN EASEMENT
"BOYNTON TOWN CENTER, A P.C.D."
(P.B. 106, PGS. 144-151)