

PERIMETER

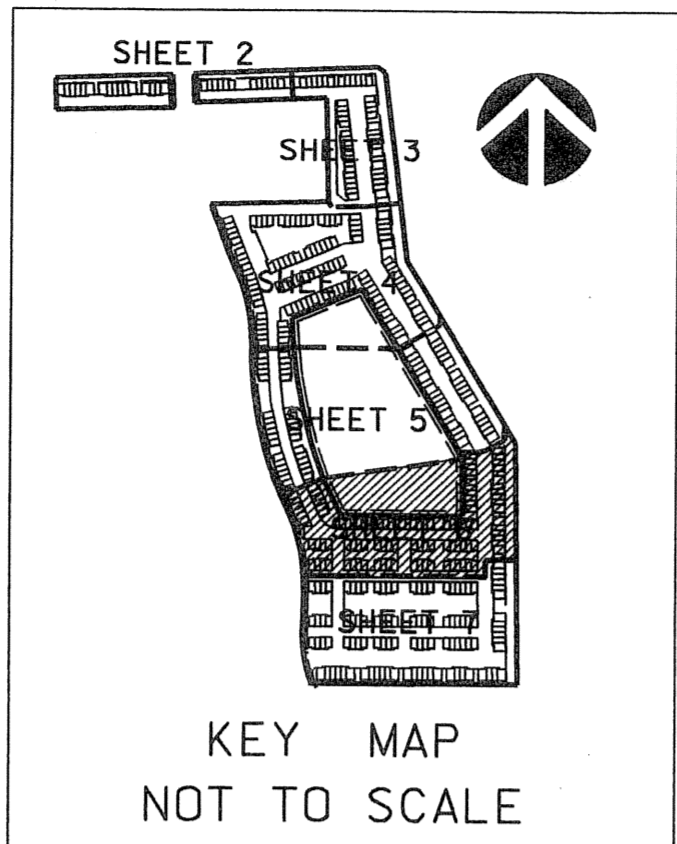
SURVEYING & MAPPING
 Prepared by: Jeff S. Hodapp, P.S.M.
 Certificate of Authorization No. LB7264
 951 Broken Sound Parkway, Suite 320
 Boca Raton, Florida 33487
 Tel: (561) 241-9988
 Fax: (561) 241-5182

LEGEND:

- ⊙ SET P.R.M. (UNLESS OTHERWISE NOTED) - 1" DIAMETER CONC. MON. WITH ALUMINUM DISK STAMPED *LB7264
- CENTERLINE

ABBREVIATIONS:

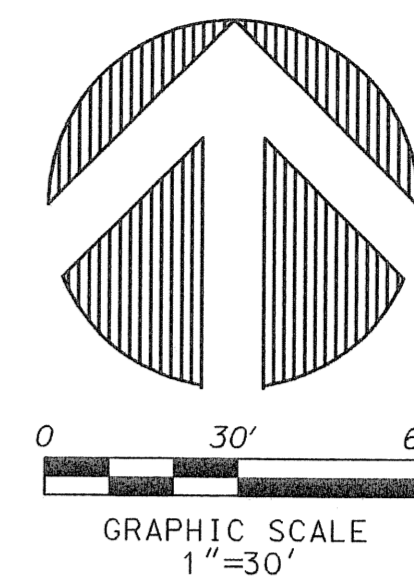
- AC. ACRES
- CHB CHORD BEARING
- CONC. CONCRETE
- COR. CORNER
- D.E. DELTA (CENTRAL ANGLE)
- ARCL. ARCL. LENGTH
- L.A.E. LIMITED ACCESS EASEMENT
- L.B. LICENSED BUSINESS
- L.B.E. LANDSCAPE BUFFER EASEMENT
- L.M.E. LAKE MAINTENANCE EASEMENT
- L.S. LICENSED SURVEYOR
- L.S.E. LIFT STATION EASEMENT
- L.W.D.D. LAKE WORTH DRAINAGE DISTRICT
- MON. MONUMENT
- O.R.B. OFFICIAL RECORDS BOOK
- N.R. NON-RADIAL
- P.B. PLAT BOOK
- P.B.C.R. PALM BEACH COUNTY RECORDS
- P.G. PAGE
- P.C.P. PERMANENT CONTROL POINT
- P.O.B. POINT OF BEGINNING
- P.O.C. POINT OF COMMENCEMENT
- P.R.M. PERMANENT REFERENCE MONUMENT
- P.S.M. PROFESSIONAL SURVEYOR & MAPPER
- P.U.D. PLANNED UNIT DEVELOPMENT
- R. ROAD
- R/W RIGHT-OF-WAY
- R.U.E. ROAD AND UTILITY EASEMENT SECTION
- SEC. SECTION
- S.F. SQUARE FEET
- U.E. UTILITY EASEMENT



KEY MAP NOT TO SCALE

CORTINA P.U.D.

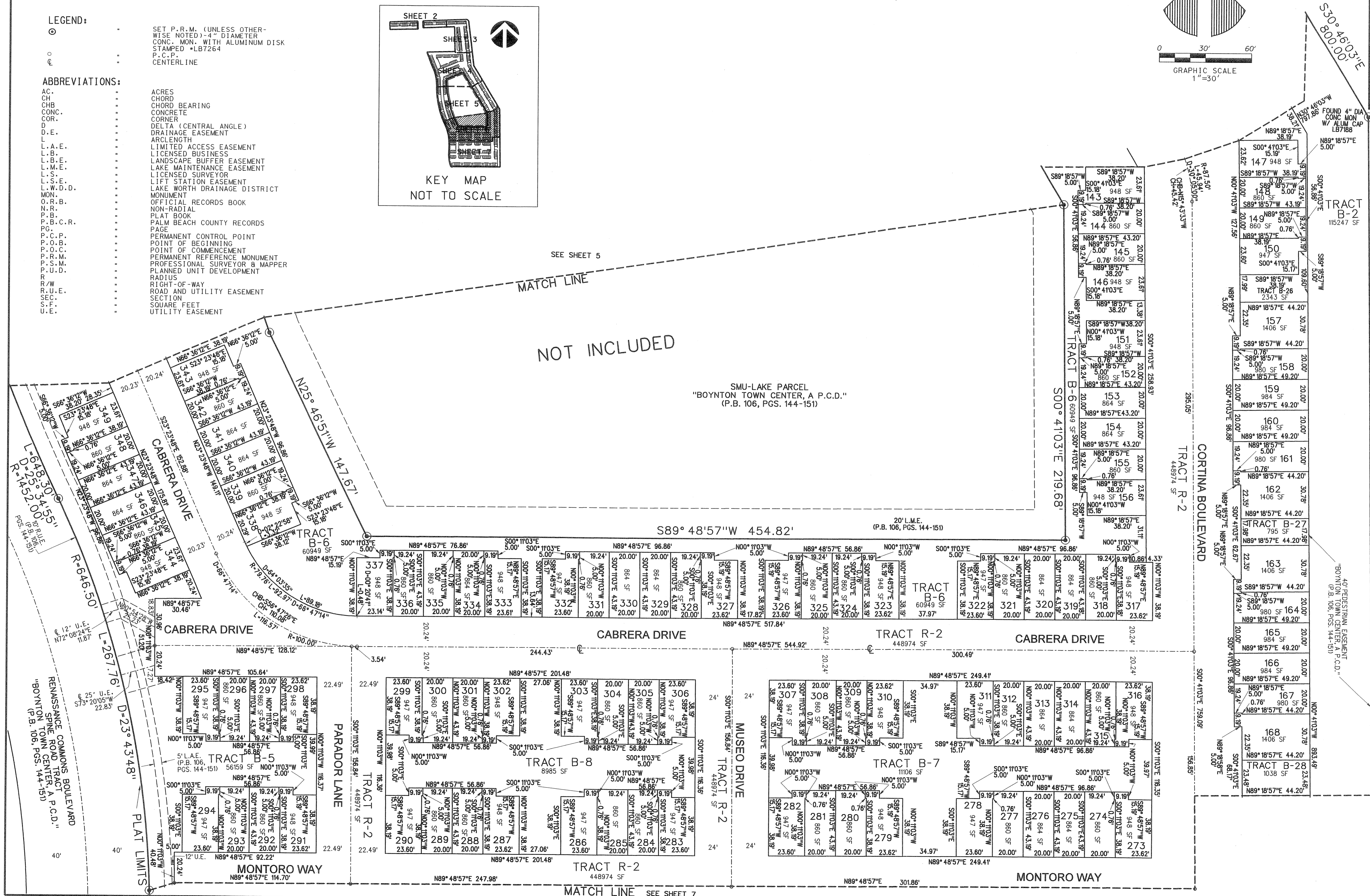
A REPLAT OF PARCELS "SMU-PARCEL 1 RESIDENTIAL" AND "SMU-PARCEL 2 RESIDENTIAL" "BOYNTON TOWN CENTER, A P.C.D." (P.B. 106, PGS. 144-151, P.B.C.R.) IN SECTION 17, TOWNSHIP 45 SOUTH, RANGE 43, EAST, CITY OF BOYNTON BEACH, PALM BEACH COUNTY, FLORIDA. JUNE, 2006



SHEET 6 OF 7

LAKE WORTH DRAINAGE DISTRICT
 CANAL E-4
 (180' CANAL R/W)
 (PER P.B. 46, PAGES 81-83, P.B.C.R.)

PLAT LIMITS



NOT INCLUDED

SMU-LAKE PARCEL
 "BOYNTON TOWN CENTER, A P.C.D."
 (P.B. 106, PGS. 144-151)

PLAT LIMITS

40' PEDESTRIAN EASEMENT
 BOYNTON TOWN CENTER, A P.C.D.
 (P.B. 106, PGS. 144-151)

PLAT LIMITS

PLAT LIMITS