

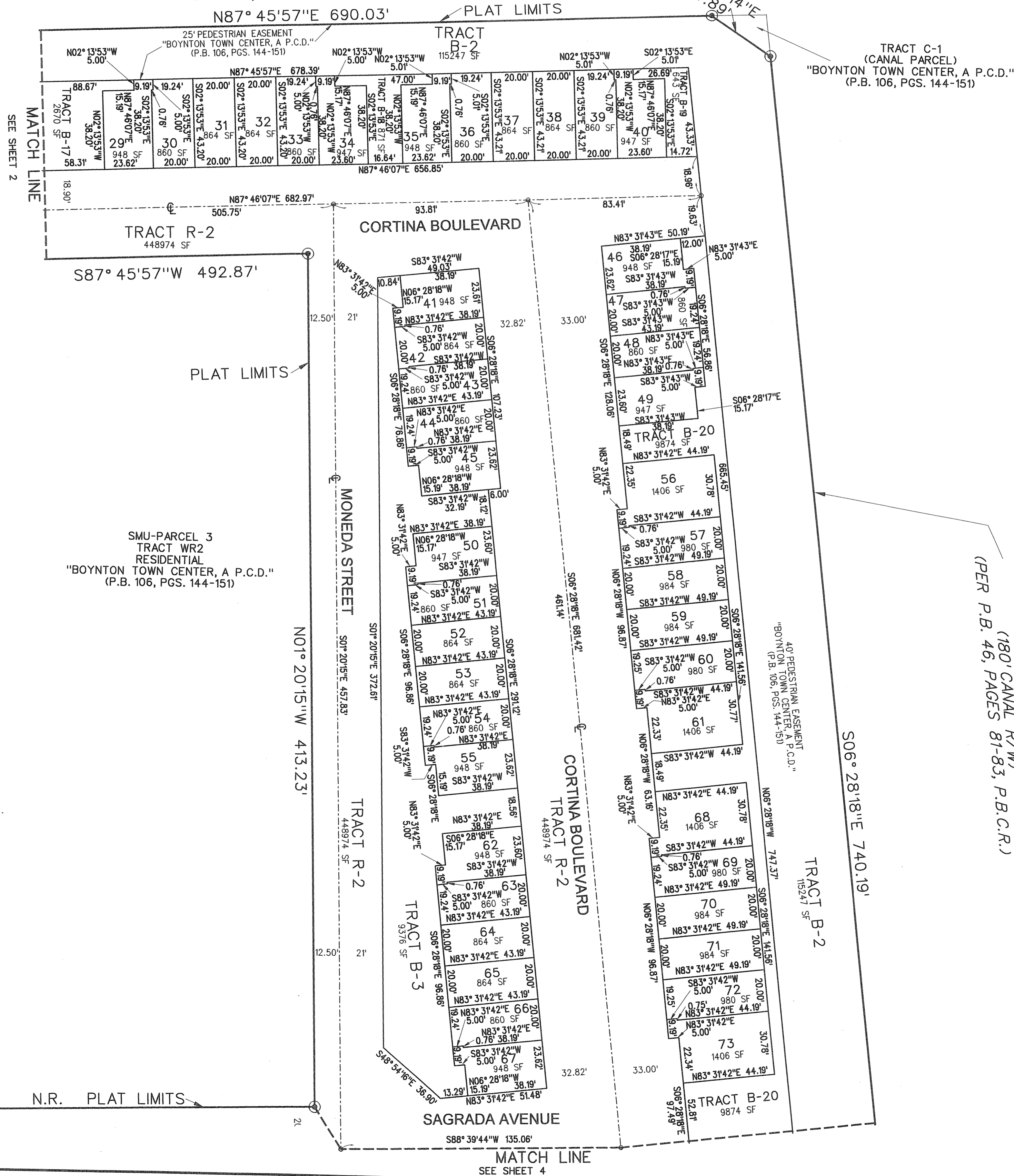
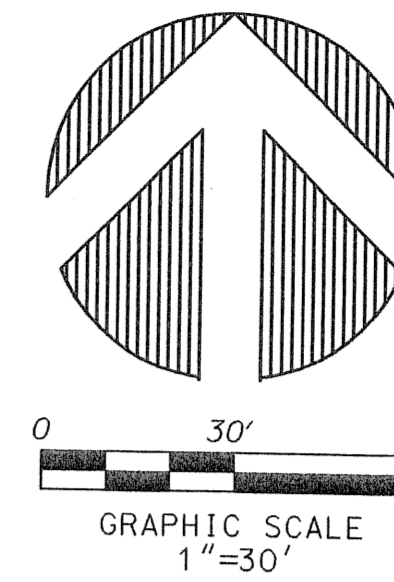
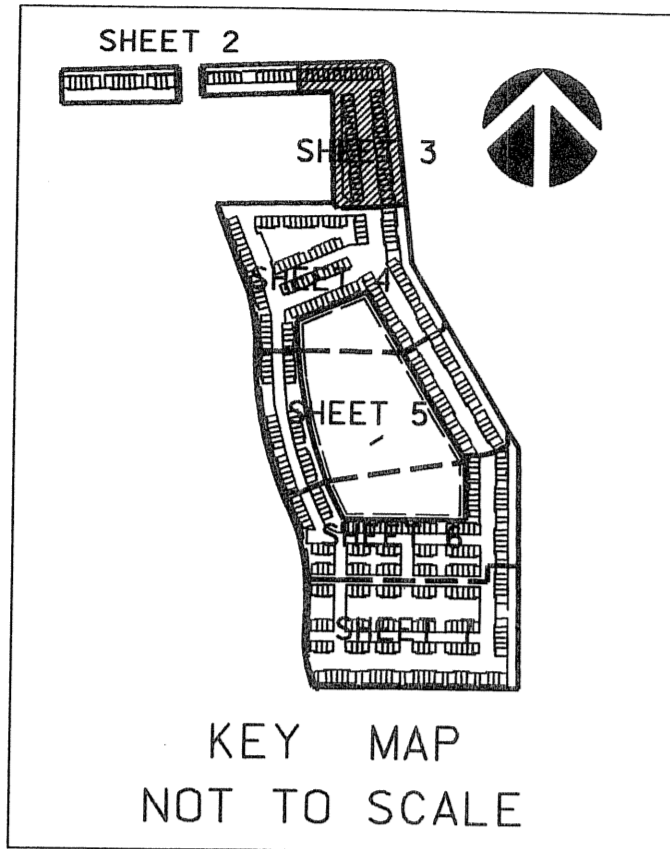
PERIMETER

SURVEYING & MAPPING
Prepared by: Jeff S. Hodapp, P.S.M.
Certificate of Authorization No. LB7264
951 Broken Sound Parkway, Suite 320
Boca Raton, Florida 33487
Tel: (561) 241-9988
Fax: (561) 241-5182

CORTINA P.U.D.

A REPLAT OF PARCELS "SMU-PARCEL 1 RESIDENTIAL" AND "SMU-PARCEL 2 RESIDENTIAL" "BOYNTON TOWN CENTER, A P.C.D." (P.B. 106, PGS. 144-151, P.B.C.R.) IN SECTION 17, TOWNSHIP 45 SOUTH, RANGE 43, EAST, CITY OF BOYNTON BEACH, PALM BEACH COUNTY, FLORIDA. JUNE, 2006

BOYNTON CANAL
CANAL C-16
140' CANAL RIGHT-OF-WAY
(D.B. 118, PG. 518)



- LEGEND:
- SET P.R.M. (UNLESS OTHERWISE NOTED)-4" DIAMETER CONC. MON. WITH ALUMINUM DISK STAMPED "LB7264 P.C.F. CENTERLINE
- ABBREVIATIONS:
- AC. ACRES
 - CH CHORD
 - CHB CHORD BEARING
 - CONC. CONCRETE
 - COR. CORNER
 - D DELTA (CENTRAL ANGLE)
 - D.E. DRAINAGE EASEMENT
 - ARCLNGTH ARCLNGTH
 - L.A.E. LIMITED ACCESS EASEMENT
 - L.B. LICENSED BUSINESS
 - L.B.E. LANDSCAPE BUFFER EASEMENT
 - L.M.E. LAKE MAINTENANCE EASEMENT
 - L.S. LICENSED SURVEYOR
 - L.S.E. LAKE WORTH DRAINAGE DISTRICT
 - L.W.D.D. LAKE WORTH DRAINAGE DISTRICT
 - MON. MONUMENT
 - O.R.B. OFFICIAL RECORDS BOOK
 - N.R. NON-RADIAL
 - P.B. PLAT BOOK
 - P.B.C.R. PALM BEACH COUNTY RECORDS
 - P.G. PAGE
 - P.C.P. PERMANENT CONTROL POINT
 - P.O.B. POINT OF BEGINNING
 - P.O.C. POINT OF COMMENCEMENT
 - P.R.M. PERMANENT REFERENCE MONUMENT
 - P.S.M. PROFESSIONAL SURVEYOR & MAPPER
 - P.U.D. PLANNED UNIT DEVELOPMENT
 - R RADIUS
 - R/W RIGHT-OF-WAY
 - R.U.E. ROAD AND UTILITY EASEMENT
 - SEC. SECTION
 - S.F. SQUARE FEET
 - U.E. UTILITY EASEMENT