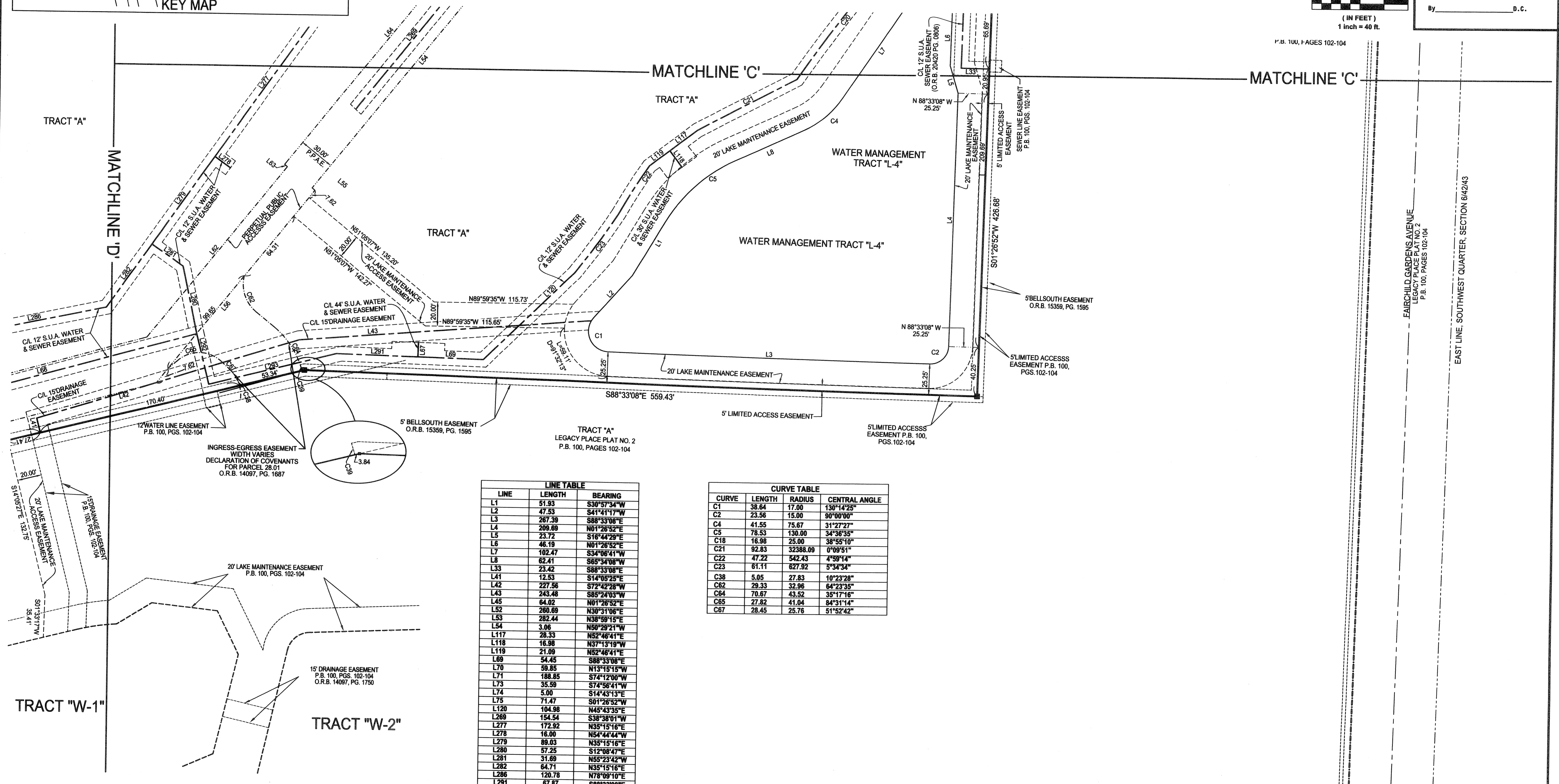
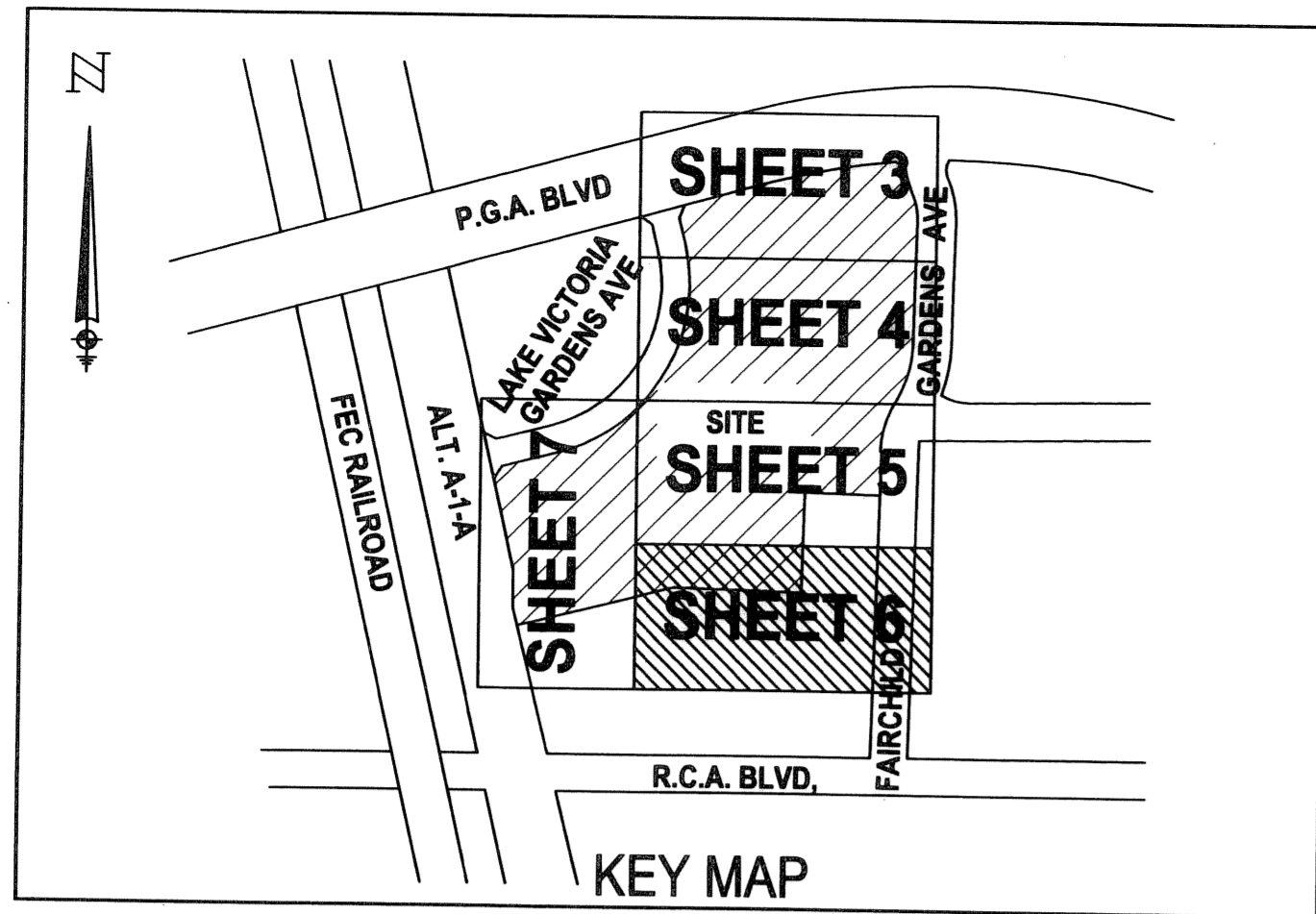
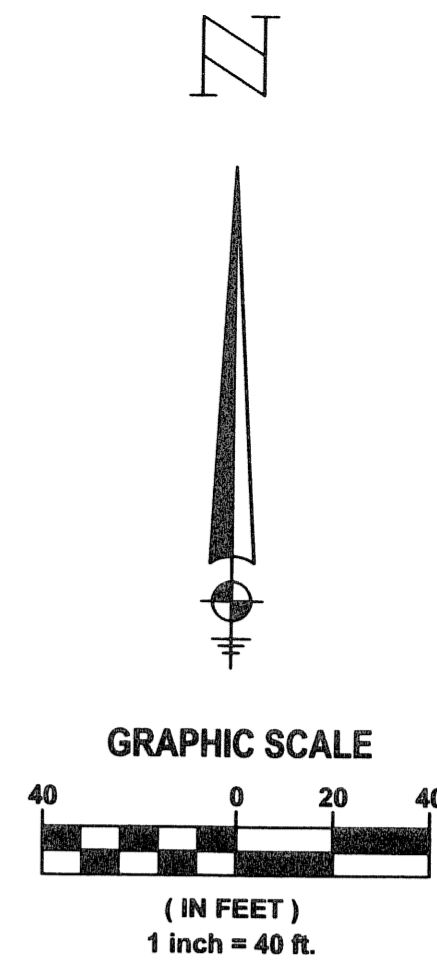


# LEGACY PLACE COMMERCIAL

BEING A REPLAT OF A PORTION OF PARCEL 1, LEGACY PLACE, AS RECORDED IN PLAT BOOK 90, PAGES 119 THROUGH 121, PUBLIC RECORDS OF PALM BEACH COUNTY, FLORIDA LYING IN SECTION 6, TOWNSHIP 42 SOUTH, RANGE 43 EAST CITY OF PALM BEACH GARDENS, PALM BEACH COUNTY, FLORIDA SHEET 6 OF 8 JULY 2006

34

STATE OF FLORIDA  
COUNTY OF PALM BEACH  
This plat was filed for record at \_\_\_\_\_ M. this day of \_\_\_\_\_, 2006 and duly recorded in Plat Book No. \_\_\_\_\_ on Pages \_\_\_\_\_ thru \_\_\_\_\_.  
Sharon R. Bock  
Clerk and Comptroller  
By \_\_\_\_\_ D.C.



LINE	LENGTH	BEARING
L1	51.93	S30°57'34"W
L2	47.53	S41°41'17"W
L3	267.39	S88°33'08"E
L4	209.69	N01°26'52"E
L5	23.72	S16°44'29"E
L6	46.19	N01°26'52"E
L7	102.47	S34°06'41"W
L8	62.41	S65°34'08"W
L33	23.42	S88°33'08"E
L41	12.53	S14°05'25"E
L42	227.56	S72°42'28"W
L43	243.48	S85°24'03"W
L45	64.02	N01°26'52"E
L52	260.69	N30°31'06"E
L53	282.44	N38°59'15"E
L54	3.06	N50°29'21"W
L117	28.33	N52°46'41"E
L118	16.98	N37°13'19"W
L119	21.99	N52°46'41"E
L69	54.45	S88°33'08"E
L70	59.85	N13°19'15"W
L71	188.85	S74°12'00"W
L73	35.59	S74°56'41"W
L74	5.00	S14°43'13"E
L75	71.47	S01°26'52"W
L120	104.98	N45°43'35"E
L269	154.54	S38°38'01"W
L277	172.92	N35°15'16"E
L278	16.00	N54°44'44"W
L279	89.03	N35°15'16"E
L280	57.25	S12°08'47"E
L281	31.69	N55°23'42"W
L282	64.71	N35°15'16"E
L286	120.78	N78°09'10"E
L291	67.87	S88°33'08"E
L292	42.62	S14°05'27"E
L293	109.09	N75°54'33"E
L294	13.52	N15°19'51"W

CURVE	LENGTH	RADIUS	CENTRAL ANGLE
C1	38.64	17.00	130°14'25"
C2	23.56	15.00	90°00'00"
C4	41.55	75.67	31°27'27"
C5	78.53	130.00	34°36'35"
C16	16.98	25.00	38°55'10"
C21	92.83	32388.09	0°09'51"
C22	47.22	542.43	4°59'14"
C23	61.11	627.92	3°34'34"
C38	5.05	27.83	10°23'28"
C62	29.33	32.96	64°23'35"
C64	70.67	43.52	35°17'16"
C65	27.82	41.04	84°31'14"
C67	28.45	25.76	51°52'42"

**LIDBERG LAND SURVEYING, INC.**  
LB 4431 675 West Indiantown Road, Suite 200, Jupiter, Florida 33458 TEL. 561-746-8454

CAD K:\AUTOCAD2000\064243100-154-SEMBLER\dwg\00-154-306.DWG			
REF			
FLD	F.B.	PG.	JOB 00-154 (306)
OFF	S.F.B.		DATE 02/03/2006
CKD	D.C.L.	SHEET 6 OF 8	DWC D00-154P