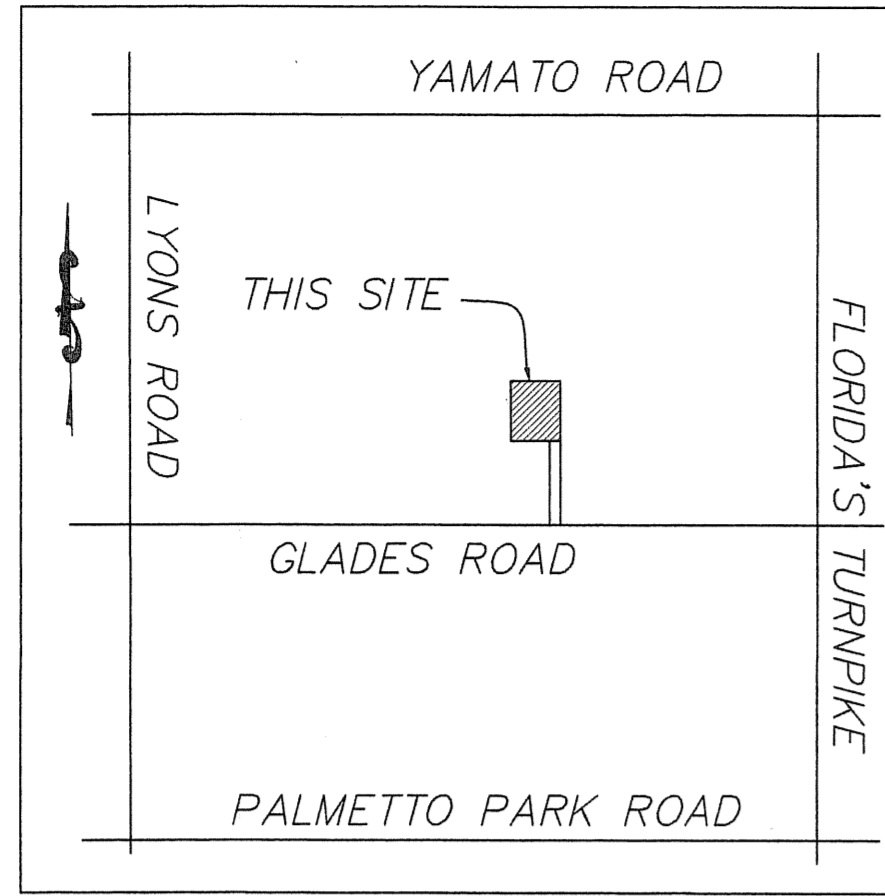
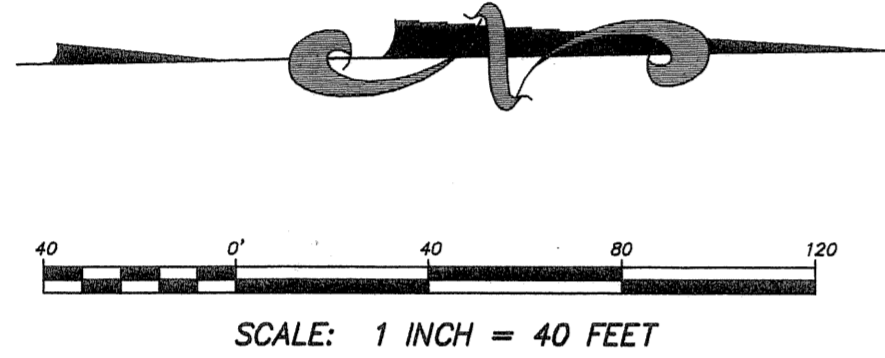


BOCA RATON STOR-ALL

A PORTION OF TRACTS 39 & 64, BLOCK 76
OF THE "PALM BEACH FARMS COMPANY PLAT No. 3"
IN SECTION 17, TOWNSHIP 47 SOUTH, RANGE 42 EAST
CITY OF BOCA RATON, PALM BEACH COUNTY, FLORIDA



LOCATION SKETCH
(NOT TO SCALE)

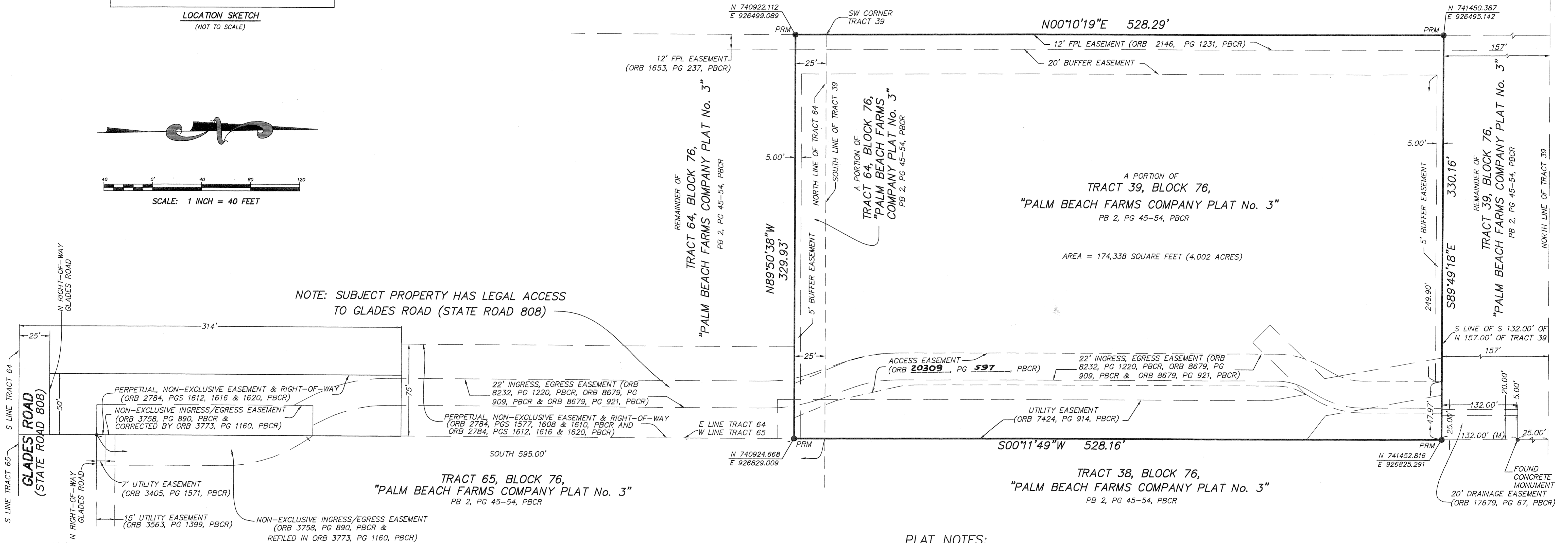


"BOCA GLADES No 1, A P.U.D."
PB 46, PG 47, PBCR

STATE OF FLORIDA } ss
COUNTY OF PALM BEACH }
THIS PLAT WAS FILED FOR RECORD
AT _____ THIS _____
DAY OF _____, 200____, AND DULY
RECORDED IN PLAT BOOK _____
ON PAGES _____ THROUGH _____

SHARON R. BOCK
CLERK AND COMPTROLLER

BY: _____
DEPUTY CLERK



PLAT NOTES:

1. THE COORDINATES SHOWN HEREON ARE BASED ON THE FLORIDA COORDINATE SYSTEM, EAST ZONE, GRID NORTH, 1983 STATE PLANE TRANSVERSE MERCATOR PROJECTION, WITH THE NAD 83 1990 ADJUSTMENT. GEODETIC CONTROL POINTS USED WERE "JESSIE", "DIESEL", "HAVEN", AND "SR 7-36" OF THE PALM BEACH COUNTY GEODETIC CONTROL DENSIFICATION PROJECT.

COORDINATES ARE SHOWN THUS: N 627785.023
E 910955.031

BEARINGS SHOWN HEREON ARE ASSUMED. BEARING REFERENCE LINE: WEST LINE OF TRACT 39, BLOCK 76, "PALM BEACH FARMS COMPANY PLAT NO. 3" (PB 2, PGS 45-54, PBCR) BEARING: N00°10'19"E

- THIS PLAT, AS RECORDED IN ITS GRAPHIC FORM, IS THE OFFICIAL DEPICTION OF THE SUBDIVIDED LANDS DESCRIBED HEREIN AND WILL IN NO CIRCUMSTANCES BE SUPPLANTED IN AUTHORITY BY ANY OTHER GRAPHIC OR DIGITAL FORM OF THE PLAT. THERE MAY BE ADDITIONAL RESTRICTIONS THAT ARE NOT RECORDED ON THIS PLAT THAT MAY BE FOUND IN THE PUBLIC RECORDS OF THIS COUNTY.
- TOTAL AREA OF PLATTED LANDS 4.002 ACRES (174,338 SQUARE FEET) MORE OR LESS.
- ADDITIONAL EASEMENTS AS MAY BE REQUIRED WILL BE OBTAINED BY SEPARATE INSTRUMENT.
- THE DISTANCES SHOWN HEREON ARE GROUND DISTANCES, THE SCALE FACTOR USED IS 1.0000252; GROUND DISTANCE MULTIPLIED BY THE SCALE FACTOR = GRID DISTANCE. ROTATION = 00°36'00" (COUNTER-CLOCKWISE).
- NO BUILDINGS OR ANY KIND OF CONSTRUCTION OR TREES OR SHRUBS SHALL BE PLACED ON ANY EASEMENT WITHOUT PRIOR WRITTEN APPROVAL OF ALL EASEMENT BENEFICIARIES AND ALL APPLICABLE COUNTY APPROVALS OR PERMITS AS REQUIRED FOR SUCH ENCROACHMENTS.

LEGEND:

- PRM = SET PERMANENT REFERENCE MONUMENT (4" x 4" CONCRETE MONUMENT & BRASS DISK #LB6218)
- PBCR = PALM BEACH COUNTY RECORDS
- ORB = OFFICIAL RECORD BOOK
- DB = DEED BOOK
- PB = PLAT BOOK
- PG = PAGE
- R = RADIUS
- L = ARC LENGTH
- Δ = CENTRAL ANGLE

THIS PLAT PREPARED BY:

ABSOLUTE SURVEYING INC.
LAND SURVEYORS
215 GOOLSBY BLVD.
DEERFIELD BEACH, FL 33442
(954) 421-4170
LICENSED BUSINESS No. LB6218

PROJECT No. 98280

SUBDIVISION Boca Raton Stor-All
BOOK 108
FLOOD ZONE
QUAD # 52
SE
TAZ 775
PUD NAME