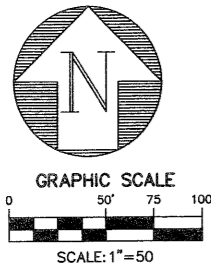


MARSH HARBOUR

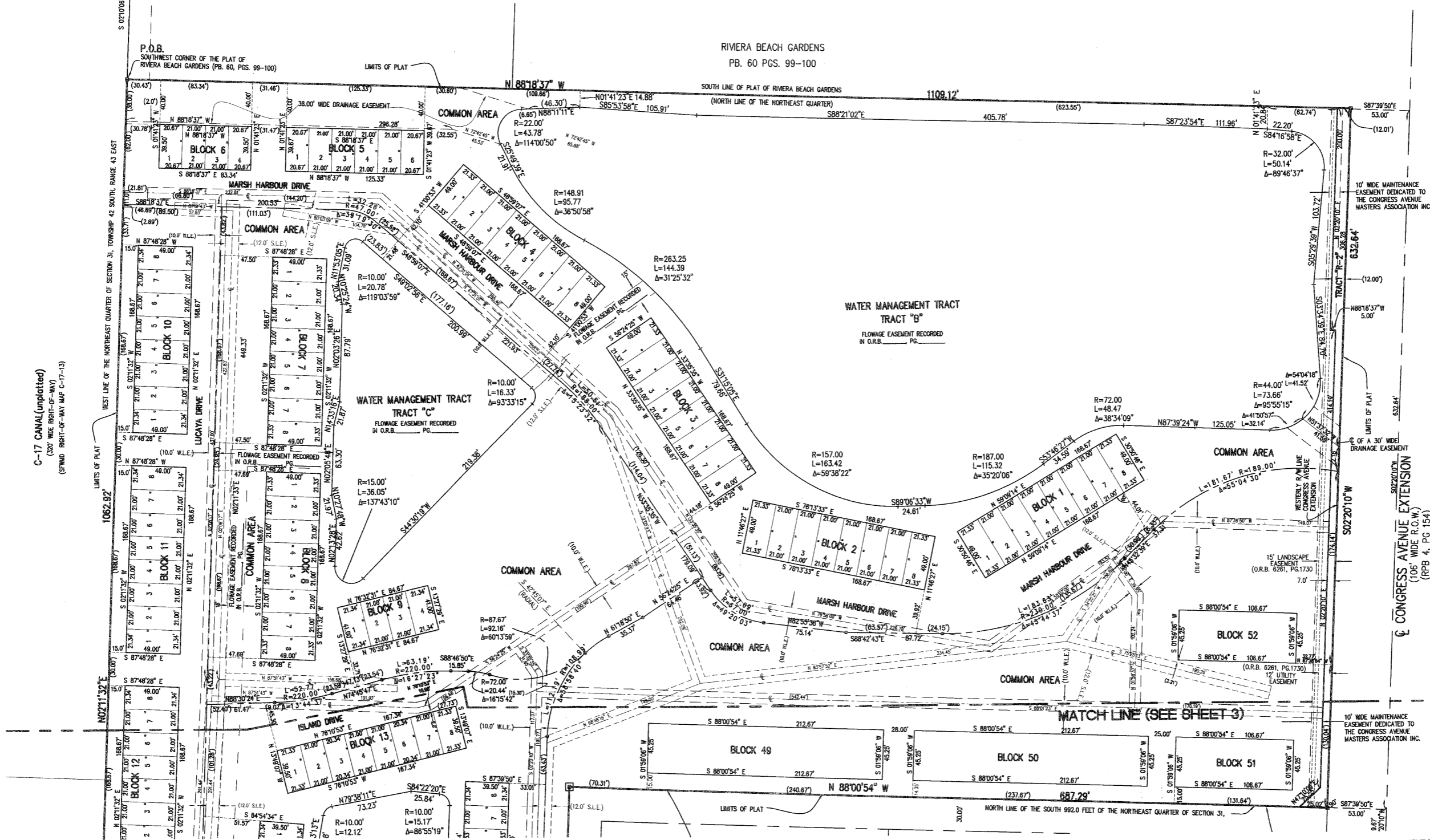
Being a replat of Congress Park Homes III as recorded in Plat Book 58, Pages 60 and 61, Public Records of Palm Beach County, Florida, together with portions of the Northeast Quarter of Section 31, Township 42 South, Range 43 East, City of Riviera Beach, Palm Beach County, Florida.

SHEET 4 OF 4
MAY 2006



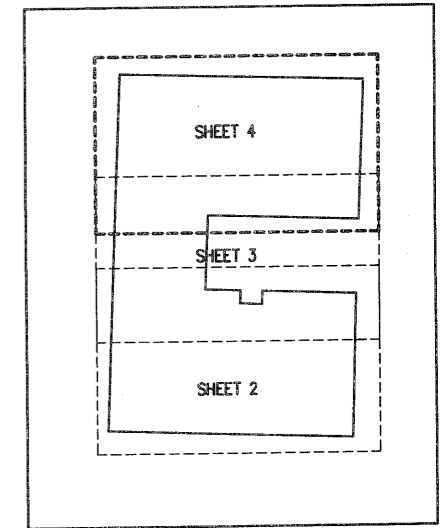
P.O.C.
N.W. CORNER OF
N.E. QUARTER SECTION 31/T42S, R43E.

RIVIERA BEACH GARDENS
PB. 60 PGS. 99-100



LEGEND

- U.E. = UTILITY EASEMENT
- D.E. = DRAINAGE EASEMENT
- [] = PERMANENT REFERENCE MONUMENT SET. #6603
- = PERMANENT CONTROL POINT. #6603
- CH = CHORD
- R = RADIUS
- L = ARC LENGTH
- Δ = CENTRAL ANGLE
- (N.R.) = NON-RADIAL
- O.R.B. = OFFICIAL RECORD BOOK
- PG. = PAGE
- L.M.E. = LAKE MAINTENANCE EASEMENT
- P.O.C. = POINT OF COMMENCEMENT
- P.O.B. = POINT OF BEGINNING
- W.L.E. = WATER LINE EASEMENT
- S.L.E. = SEWER LINE EASEMENT
- RPB. = ROAD PLAT BOOK
- R.O.W. = RIGHT-OF-WAY
- P.B. = PLAT BOOK
- CL = CENTER LINE



C-17 CANAL (unplatted)
(100' WIDE RIGHT-OF-WAY)
(SPIND, RIGHT-OF-WAY MAP C-17-13)

THIS INSTRUMENT PREPARED BY ANDRE' RAYMAN, P.S.M. LS#4838 STATE OF FLORIDA.
SFRN, INC., ENGINEERS, SURVEYORS & MAPPERS
1201 BELVEDERE ROAD, WEST PALM BEACH, FLORIDA 33405.
CERTIFICATE OF AUTHORIZATION NO. LB0008803

MARSH HARBOUR

SFRN
Engineers • Surveyors • Mappers
1201 BELVEDERE ROAD, WEST PALM BEACH, FLORIDA 33405
PH (561)855-1151 • FAX (561)832-9390 • WWW.SFRNINC.COM

DATE	11/13/2004
SCALE	1" = 50'
CAD FILE	4016plat.dwg
SISK PROJECT	4016
DRAWN	SFRN STAFF
CHECKED	G. RAYMAN

S
H
E
E
T

4/4

JOB NO.
04016