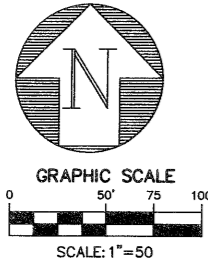
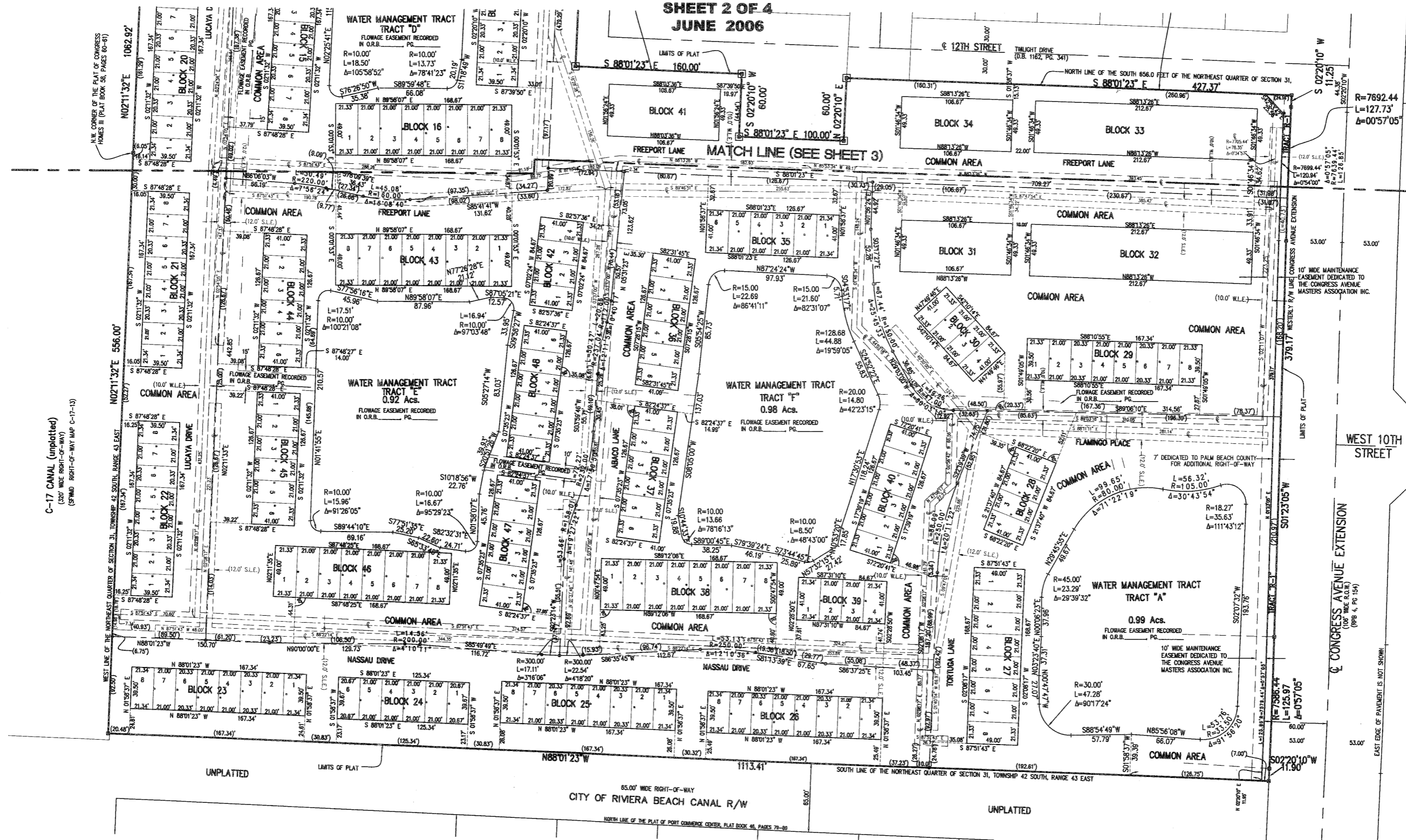


MARSH HARBOUR

Being a replat of Congress Park Homes III as recorded in Plat Book 58, Pages 60 and 61, Public Records of Palm Beach County, Florida, together with portions of the Northeast Quarter of Section 31, Township 42 South, Range 43 East, City of Riviera Beach, Palm Beach County, Florida.

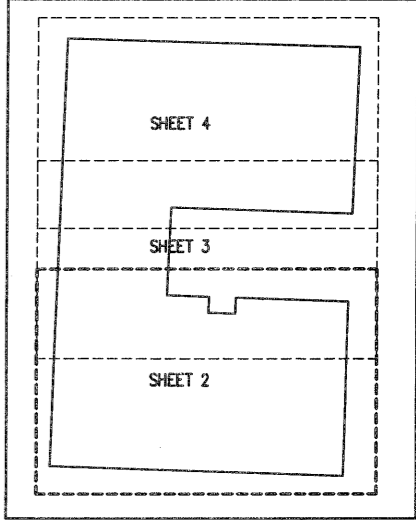


SHEET 2 OF 4
JUNE 2006



LEGEND

- U.E. = UTILITY EASEMENT
- D.E. = DRAINAGE EASEMENT
- = PERMANENT REFERENCE MONUMENT SET. #6603
- = PERMANENT CONTROL POINT. #6603
- CH = CHORD
- R = RADIUS
- L = ARC LENGTH
- Δ = CENTRAL ANGLE
- (N.R.) = NON-RADIAL
- O.R.B. = OFFICIAL RECORD BOOK
- PG. = PAGE
- L.M.E. = LAKE MAINTENANCE EASEMENT
- P.O.C. = POINT OF COMMENCEMENT
- P.O.B. = POINT OF BEGINNING
- W.L.E. = WATER LINE EASEMENT
- S.L.E. = SEWER LINE EASEMENT
- RPB. = ROAD PLAT BOOK
- R.O.W. = RIGHT-OF-WAY
- P.B. = PLAT BOOK
- ⊕ = CENTER LINE



I:\Land Projects\RC\4015\Map\4015platt.dwg 4/24/2006 11:25:56 AM EST

THIS INSTRUMENT PREPARED BY ANDRE' RAYMAN, P.S.M. LS#4938 STATE OF FLORIDA.
SFRN, INC., ENGINEERS, SURVEYORS & MAPPERS
1201 BELVEDERE ROAD, WEST PALM BEACH, FLORIDA 33405.
CERTIFICATE OF AUTHORIZATION NO. LB0006883

MARSH HARBOUR

SFRN

DATE 11/13/2004
 SCALE 1" = 50'
 CAD FILE 4016platt.dwg
 SSK PROJECT 4016
 DRAWN SFRN STAFF
 CHECKED G. RAYMAN

SHEET

2/4

 JOB NO.

04016

Engineers • Surveyors • Mappers
1201 BELVEDERE ROAD, WEST PALM BEACH, FLORIDA 33405
PH (561)655-1151 • FAX (561)832-9390 • WWW.SFRNINC.COM