

0965-005

114

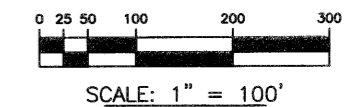
(A.K.A. FOGG PRESERVE PARCEL/FOGG SOUTH) **CANYON SPRINGS PRESERVE PLAT 5**

BEING A REPLAT OF A PORTION OF TRACTS 66 THROUGH 70, 92, 101, 102, 121, 122, 123 AND ALL OF TRACTS 93 THROUGH 95, 98 THROUGH 100, 124 THROUGH 127, AND THAT STRIP OF LAND, 30 FEET IN WIDTH, LYING BETWEEN SAID TRACTS 92 THROUGH 95 AND TRACTS 98 THROUGH 101, ALL LYING WITHIN BLOCK 59, PALM BEACH FARMS CO. PLAT NO. 3, ACCORDING TO THE PLAT THEREOF AS RECORDED IN PLAT BOOK 2, PAGE 45 THROUGH 54 OF THE PUBLIC RECORDS OF PALM BEACH COUNTY, FLORIDA, LYING, BEING AND SITUATE IN SECTION 32, TOWNSHIP 45 SOUTH, RANGE 42 EAST AND SECTION 5, TOWNSHIP 46 SOUTH, RANGE 42 EAST

THIS INSTRUMENT PREPARED BY
PERRY C. WHITE, P.S.M. 4213, STATE OF FLORIDA
LAWSON, NOBLE AND WEBB, INC.
ENGINEERS PLANNERS SURVEYORS
420 COLUMBIA DRIVE
WEST PALM BEACH, FLORIDA 33409
LB-6674

SHEET 3 OF 3

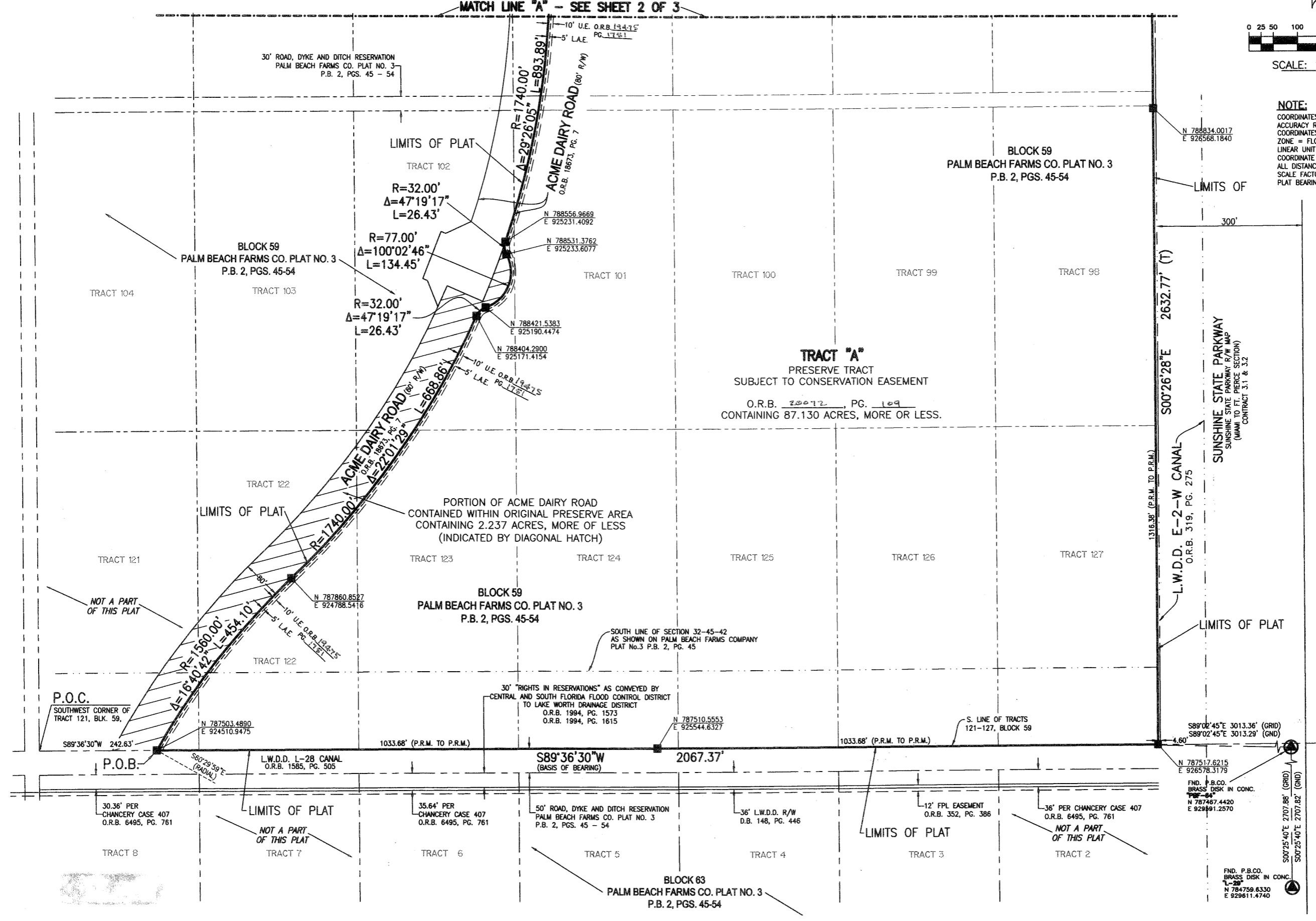
AUGUST, 2005



SCALE: 1" = 100'

NOTE:
COORDINATES SHOWN ON THE GEODETIC CONTROL MEET OR EXCEED THE LOCAL ACCURACY REQUIREMENTS OF A 2 CENTIMETER GEODETIC CONTROL SURVEY. COORDINATES SHOWN ARE GRID COORDINATES DATUM = NAD 83 (1990 ADJUSTMENT) ZONE = FLORIDA EAST ZONE
LINEAR UNIT = U.S. SURVEY FEET
COORDINATE SYSTEM = 1983 STATE PLANE TRANSVERSE MERCATOR PROJECTION
ALL DISTANCES ARE GROUND
SCALE FACTOR = 1.0000244
PLAT BEARING = GRID BEARING

- LEGEND:**
- - FND CONCRETE MONUMENT
 - - SET PERMANENT REFERENCE MONUMENT, L.B. #6674
 - - PERMANENT CONTROL POINT, L.B. #6674
 - Δ - DELTA ANGLE
 - CH - CHORD
 - G - CENTERLINE
 - D.B. - DEED BOOK
 - L - ARC LENGTH
 - L.A.E. - LIMITED ACCESS EASEMENT
 - L.W.D.D. - LAKE WORTH DRAINAGE DISTRICT
 - N.R. - NOT RADIAL
 - N.T.S. - NOT TO SCALE
 - O.R.B. - OFFICIAL RECORD BOOK
 - P.B. - PLAT BOOK
 - P.C. - POINT OF CURVATURE
 - PGS. - PAGES
 - P.S.M. - PROFESSIONAL SURVEYOR AND MAPPER
 - R - RADIUS
 - N 737648.0171
E 905258.2326 - DENOTES STATE PLANE COORDINATES
 - R, D & D. - ROAD, DYKE AND DITCH RESERVATION
 - RAD. - RADIAL
 - R/W - RIGHT-OF-WAY
 - S.T. - SURVEY TIE
 - U.E. - UTILITY EASEMENT
 - P.O.B. - POINT OF BEGINNING
 - P.O.C. - POINT OF COMMENCEMENT
 - T - TOTAL
 - GND - GROUND



REPLAT OF CANYON SPRINGS PRESERVE PLAT 5
BLOCK 59
PLAT BOOK # 2
PAGE 45-54
DATE 7/5/05
FWD MADE

